

STEEL BEAM GUARDRAIL, GALVANIZED
 118+00.00 ~ 121+34.92 LT
 120+35.65 ~ 121+50.00 RT
 TH- 25 200+14.72 ~ 200+58.72 LT
 PRIVATE DRIVE 801+89.00 ~ 802+00.00

CAST-IN-PLACE CONCRETE CURB, TYPE B
 VT- 116
 119+84.50 ~ 121+50.00 LT
 121+48.34 ~ 121+50.00 RT

DELINEATOR WITH STEEL POST
 VT-116
 119+92.80 LT WHITE
 120+25.00 RT BLUE

REMOVAL OF EXISTING FENCE
 TH-25
 200+70.00 ~ 202+37.54 LT

GUARDRAIL APPROACH SECTION,
 GALVANIZED 2 RAIL BOX BEAM
 121+34.92 ~ 121+50.00 LT

ANCHOR FOR STEEL BEAM RAIL
 PRIVATE DRIVE 800+43.50 LT

REMOVAL AND DISPOSAL OF GUARDRAIL
 VT- 116
 121+45.63, 13.62' ~ 121+50.00, 11.54' LT

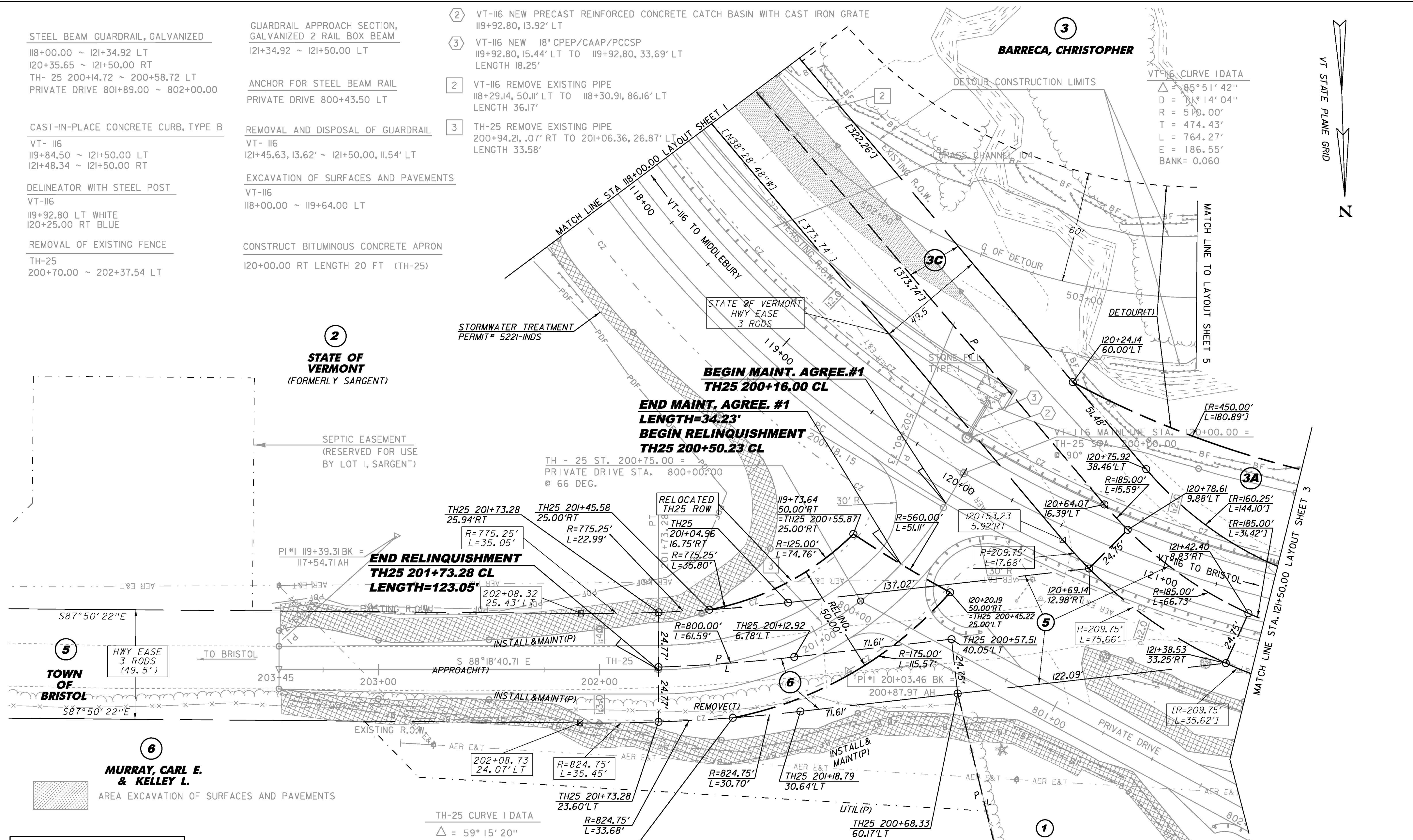
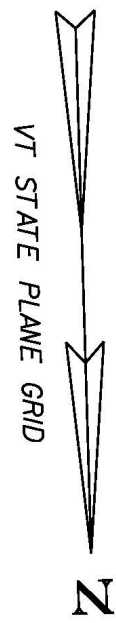
EXCAVATION OF SURFACES AND PAVEMENTS
 VT-116
 118+00.00 ~ 119+64.00 LT

CONSTRUCT BITUMINOUS CONCRETE APRON
 120+00.00 RT LENGTH 20 FT (TH-25)

- ② VT-116 NEW PRECAST REINFORCED CONCRETE CATCH BASIN WITH CAST IRON GRATE
 119+92.80, 13.92' LT
- ③ VT-116 NEW 18" CPEP/CAAP/PCCSP
 119+92.80, 15.44' LT TO 119+92.80, 33.69' LT
 LENGTH 18.25'
- ② VT-116 REMOVE EXISTING PIPE
 118+29.14, 50.11' LT TO 118+30.91, 86.16' LT
 LENGTH 36.17'
- ③ TH-25 REMOVE EXISTING PIPE
 200+94.21, .07' RT TO 201+06.36, 26.87' LT
 LENGTH 33.58'

BARRECA, CHRISTOPHER

VT-116 CURVE DATA
 $\Delta = 85^\circ 51' 42''$
 $D = 14^\circ 04''$
 $R = 510.00'$
 $T = 474.43'$
 $L = 764.27'$
 $E = 186.55'$
 $BANK = 0.060$



② STATE OF VERMONT
 (FORMERLY SARGENT)

⑤ TOWN OF BRISTOL

⑥ MURRAY, CARL E. & KELLEY L.

LINES SHOWN ON THIS PLAN AS EXISTING
 PROPERTY LINES P/L ARE BELIEVED TO
 BE ACCURATE BUT SHOULD NOT BE RELIED
 UPON FOR PURPOSES UNRELATED TO THE
 STATE OF VERMONT'S ACQUISITION OF LAND
 AND RIGHTS FOR THIS PROJECT.

FOR R.O.W.
 USE ONLY

TH-25 CURVE DATA
 $\Delta = 59^\circ 15' 20''$
 $D = 38^\circ 11' 50''$
 $R = 150.00'$
 $T = 85.31'$
 $L = 155.13'$
 $E = 22.56'$

☒ CALCULATED POINT

SCALE 1" = 20'-0"
 20 0 20

① STATE OF VERMONT
 (FORMERLY BAKER)

PROJECT NAME: BRISTOL
 PROJECT NUMBER: STP F 021-1 (15)

FILE NAME: r78f187.lay2.dgn
 PROJECT LEADER: M. EVANS-MONGEON
 DESIGNED BY: W. PELLETIER
 ROW LAYOUT SHEET 2 OF 5

PLOT DATE: 07-SEP-2012
 DRAWN BY: E. PIERCE
 CHECKED BY: E. PIERCE
 SHEET 5 OF 37