

| CURVE #2 POINTS | | | |
|-----------------|-----------|-------------|-------------|
| STATION | NORTHING | EASTING | |
| PC | 9+838.190 | 238554.3709 | 473970.7648 |
| PI | 9+859.588 | 238575.4366 | 473974.5237 |
| PT | 9+876.602 | 238588.3846 | 473957.4871 |

| CURVE DATA #2 | |
|---------------|----------------------|
| R | = 35.000m |
| Δ | = 62° 52' 55.25" LT. |
| D | = 49' 53" 47.54" |
| L | = 38.412m |
| T | = 21.398m |
| C | = 36.513m |
| M | = 5.139m |
| E | = 6.023m |
| e | = MATCH EXISTING |

900.675-SPECIAL PROVISION (HAND-PLACED BITUMINOUS CONCRETE MATERIAL, DRIVES)
 STA. 9+934.418, LT. (6.30m GRAVEL)

CONSTRUCT DRIVE
 STA. 9+934.418, LT. (6.30m GRAVEL)
 STA. 9+943.594, RT. (8.0m PAVED)

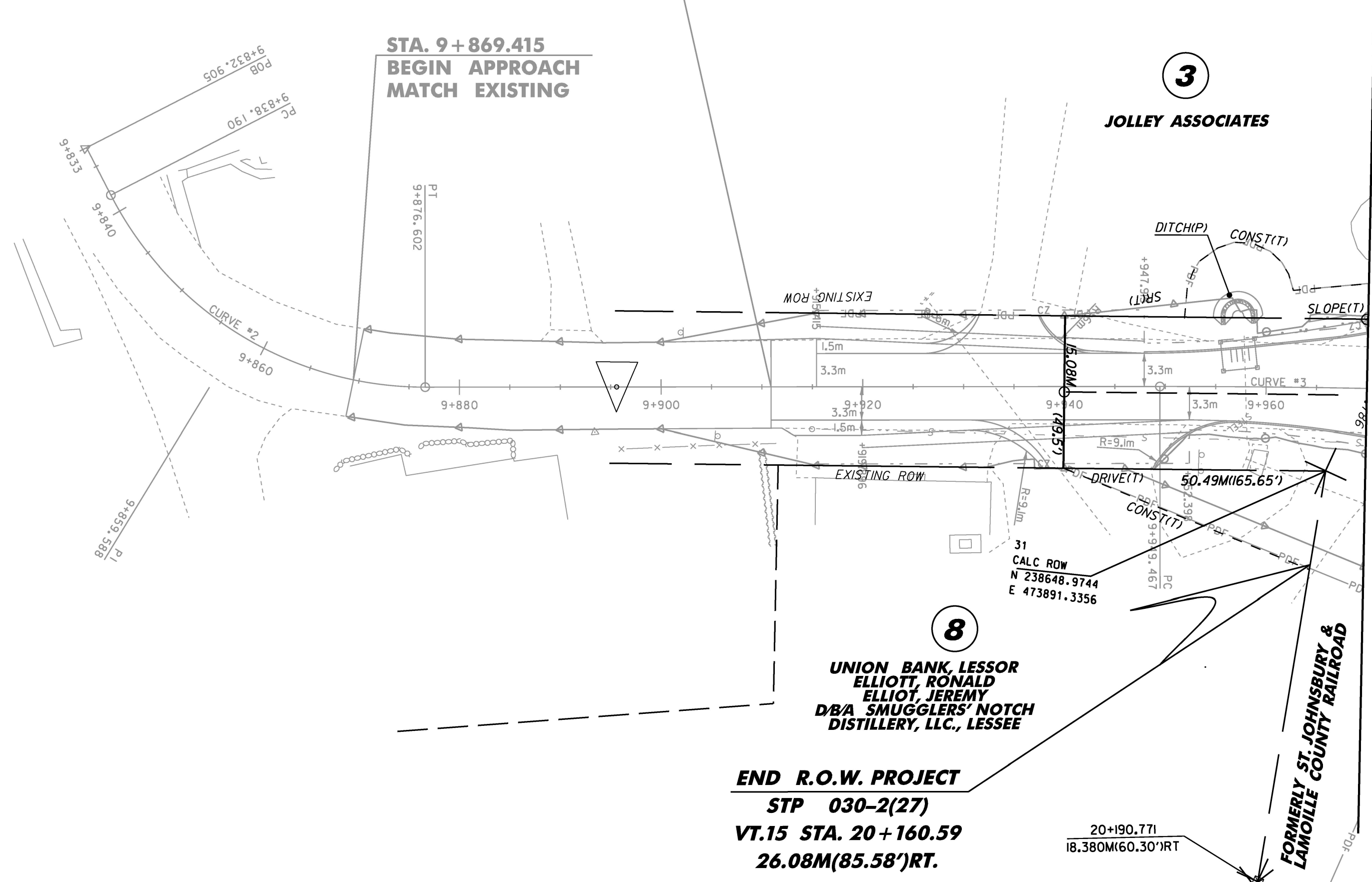
604.42-CHANGING ELEVATION OF SEWER MANHOLES
 STA. 9+914.965, RT.
 STA. 9+958.408, RT.

| CURVE #3 POINTS | | | |
|-----------------|-----------|-------------|-------------|
| STATION | NORTHING | EASTING | |
| PC | 9+949.467 | 238632.4740 | 473899.4754 |
| PI | 9+970.490 | 238645.1947 | 473882.7379 |
| PT | 9+991.506 | 238658.6076 | 473866.5497 |

| CURVE DATA #3 | |
|---------------|----------------------|
| R | = 1000.000m |
| Δ | = 02° 24' 31.30" RT. |
| D | = 01° 44' 46.96" |
| L | = 42.040m |
| T | = 21.023m |
| C | = 42.037m |
| M | = 0.221m |
| E | = 0.221m |
| e | = NC |

**STA. 9+910.905
 END APPROACH
 BEGIN PROJECT
 STP 030-2(27)**

**STA. 9+869.415
 BEGIN APPROACH
 MATCH EXISTING**



**END R.O.W. PROJECT
 STP 030-2(27)
 VT.15 STA. 20+160.59
 26.08M(85.58')RT.**

**FOR R.O.W.
 USE ONLY**

LINE SHOWN ON THIS PLAN AS EXISTING
 PROPERTY LINES P/L ARE BELIEVED TO
 BE ACCURATE BUT SHOULD NOT BE RELIED
 UPON FOR PURPOSES UNRELATED TO THE
 STATE OF VERMONT'S ACQUISITION OF LAND
 AND RIGHTS FOR THIS PROJECT.



STP LAYOUT #4

| | | | |
|-----------------|--------------------|---------------------------|-----------------|
| PROJECT NAME: | CAMBRIDGE | PLOT DATE: | 05-JUN-2012 |
| PROJECT NUMBER: | STP 030-2(27) | DRAWN BY: | B. FERLAZO |
| FILE NAME: | r78f163STP1ay4.dgn | CHECKED BY: | H. PETROVS |
| PROJECT LEADER: | JLS | R.O.W. STP LAYOUT SHEET 4 | SHEET 81 OF 214 |