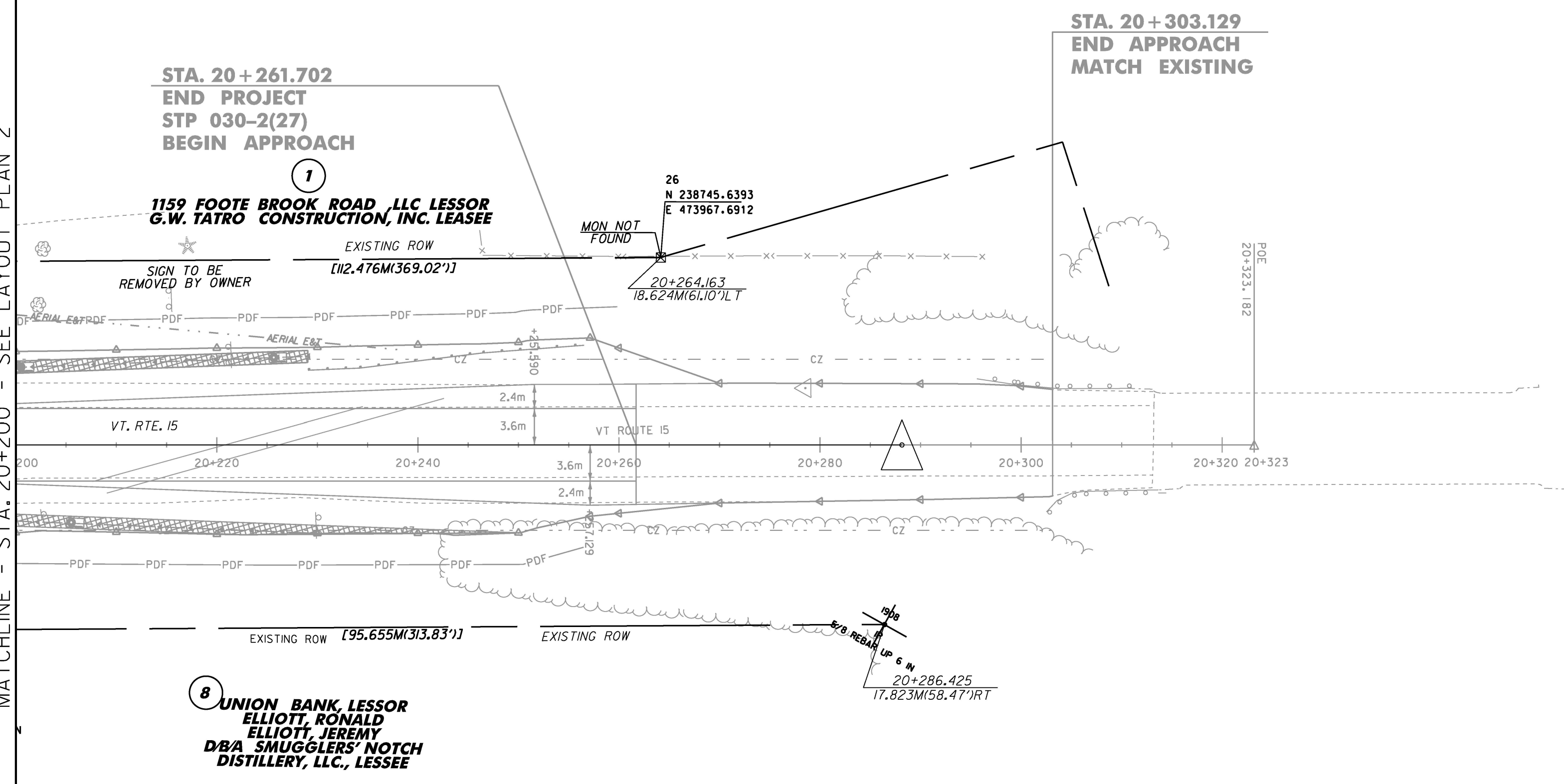
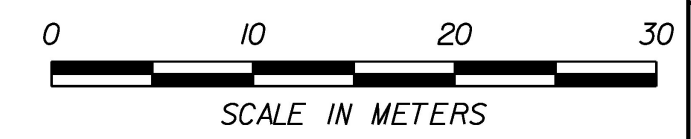


MATCHLINE - STA. 20+200 - SEE LAYOUT PLAN 2



FOR R.O.W. USE ONLY

LINE SHOWN ON THIS PLAN AS EXISTING PROPERTY LINES P/L ARE BELIEVED TO BE ACCURATE BUT SHOULD NOT BE RELIED UPON FOR PURPOSES UNRELATED TO THE STATE OF VERMONT'S ACQUISITION OF LAND AND RIGHTS FOR THIS PROJECT.



| | |
|-------------------------------|-------------------------------|
| STP LAYOUT #3 | |
| PROJECT NAME: CAMBRIDGE | FILE NAME: r78f163STPlay3.dgn |
| PROJECT NUMBER: STP 030-2(27) | PLOT DATE: 05-JUN-2012 |
| DESIGNED BY: MBL | DRAWN BY: B. FERLAZO |
| R.O.W. STP LAYOUT SHEET 3 | CHECKED BY: H. PETROVS |
| | SHEET 80 OF 214 |