

**VT ROUTE 108 STA. 10+082.794  
END ROADWAY PROJECT  
STP 030-2(27)  
BEGIN BRIDGE PROJECT  
BRF 027-1(4)**

CONSTRUCT DRIVE  
STA. 10+055.294, LT. (8m PAVED)  
STA. 20+073.010, LT. (10m PAVED)  
STA. 20+187.354, LT. (12m PAVED)

620.50-REMOVING AND RESETTING FENCE  
STA. 10+072.000 - STA. 10+082.794, RT.



CURVE #4 POINTS

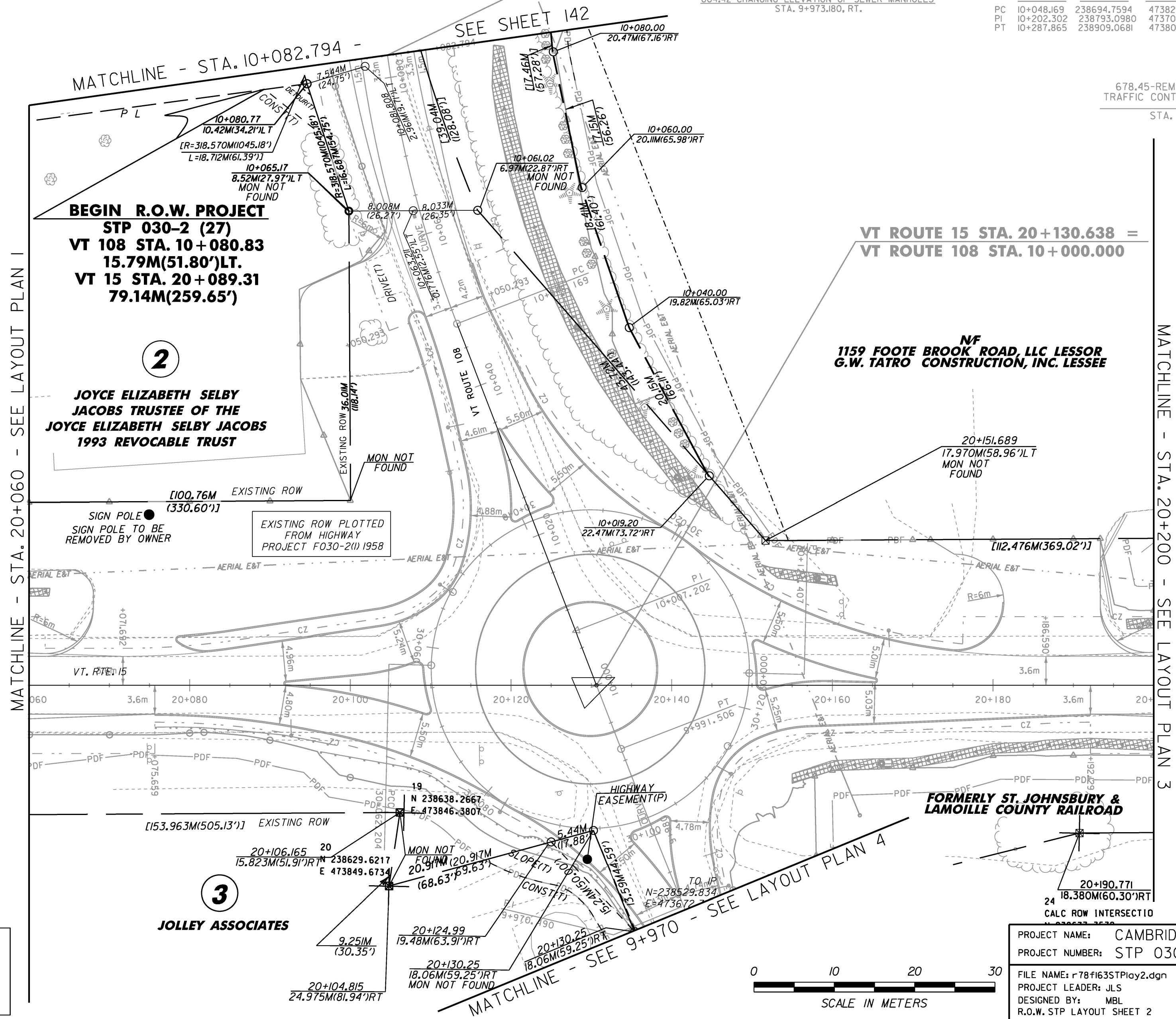
STATION	NORTHING	EASTING
PC 10+048.169	238694.7594	473822.9178
PI 10+202.302	238793.0980	473704.2320
PT 10+287.865	238909.0681	473805.7590

CURVE DATA #4

R	= 150.000m
Δ	= 97°33'24.93" RT.
D	= 1738'33.09"
L	= 239.695m
T	= 154.132m
C	= 214.995m
M	= 45.385m
E	= 65.074m
e	= 7.8 %

604.42-CHANGING ELEVATION OF SEWER MANHOLES  
STA. 9+973.180, RT.

678.45-REMOVAL OF EXISTING  
TRAFFIC CONTROL SIGNAL SYSTEM  
STA. 10+000.000



MATCHLINE - STA. 10+082.794 -

SEE SHEET 142

**BEGIN R.O.W. PROJECT  
STP 030-2 (27)  
VT 108 STA. 10+080.83  
15.79M(51.80')LT.  
VT 15 STA. 20+089.31  
79.14M(259.65')**

**2**

**JOYCE ELIZABETH SELBY  
JACOBS TRUSTEE OF THE  
JOYCE ELIZABETH SELBY JACOBS  
1993 REVOCABLE TRUST**

**VT ROUTE 15 STA. 20+130.638 =  
VT ROUTE 108 STA. 10+000.000**

**NF  
1159 FOOTE BROOK ROAD, LLC LESSOR  
G.W. TATRO CONSTRUCTION, INC. LESSEE**

SIGN POLE  
SIGN POLE TO BE  
REMOVED BY OWNER

EXISTING ROW PLOTTED  
FROM HIGHWAY  
PROJECT F030-2(1) 1958

**FORMERLY ST. JOHNSBURY &  
LAMOILLE COUNTY RAILROAD**

EXISTING ROW  
[153.963M(505.13')]

**3**

**JOLLEY ASSOCIATES**

SEE LAYOUT PLAN 4

MATCHLINE - STA. 20+200 - SEE LAYOUT PLAN 3

**FOR R.O.W.  
USE ONLY**

LINE SHOWN ON THIS PLAN AS EXISTING  
PROPERTY LINES P/L ARE BELIEVED TO  
BE ACCURATE BUT SHOULD NOT BE RELIED  
UPON FOR PURPOSES UNRELATED TO THE  
STATE OF VERMONT'S ACQUISITION OF LAND  
AND RIGHTS FOR THIS PROJECT.



PROJECT NAME: CAMBRIDGE  
PROJECT NUMBER: STP 030-2(27)

FILE NAME: r78f163STPlay2.dgn  
PROJECT LEADER: JLS  
DESIGNED BY: MBL  
R.O.W. STP LAYOUT SHEET 2

**STP LAYOUT #2**

PLOT DATE: 05-JUN-2012  
DRAWN BY: B. FERLAZO  
CHECKED BY: H. PETROVS  
SHEET 79 OF 214