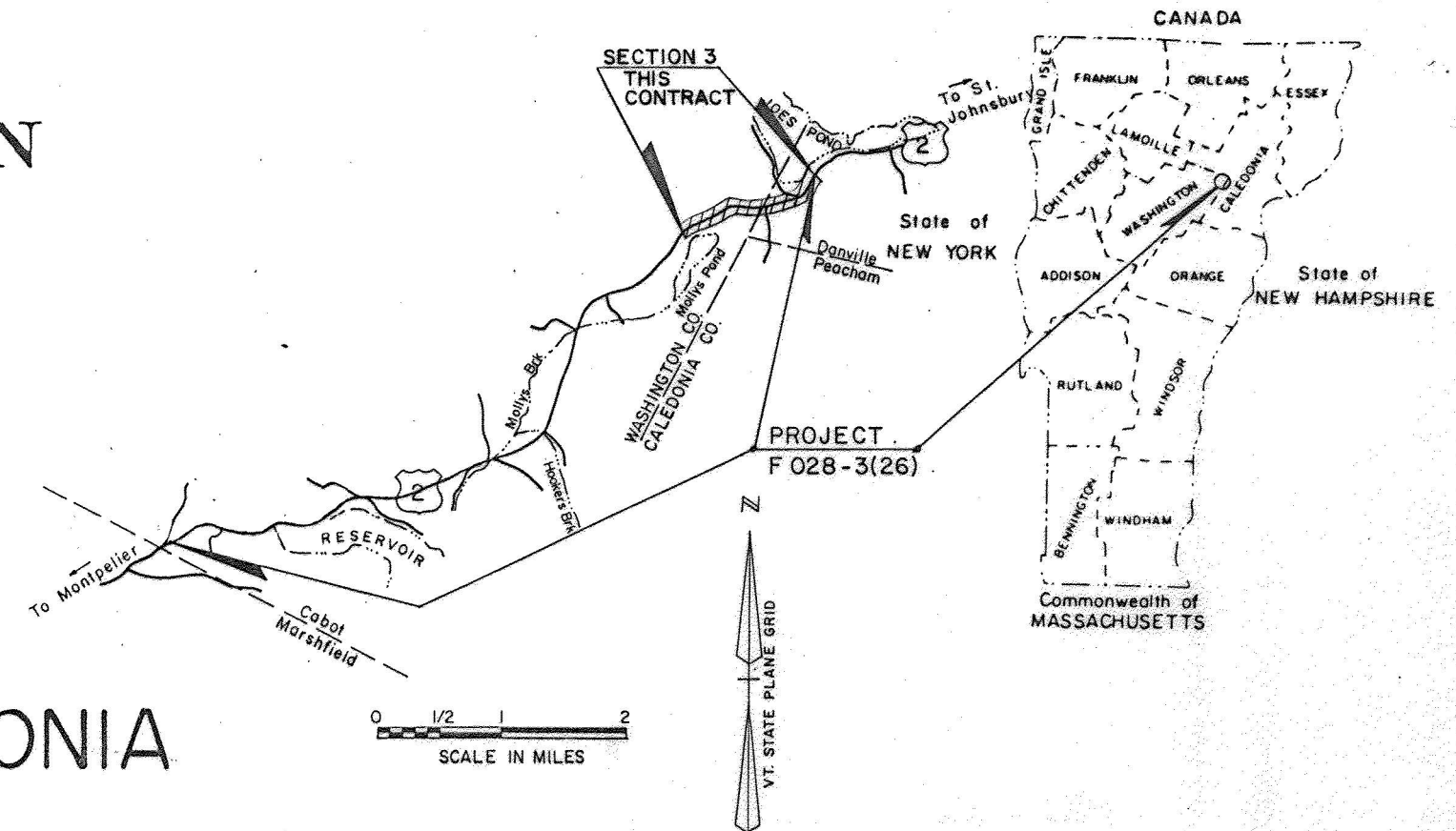


R.O.W. PLANS

STATE OF VERMONT  
AGENCY OF TRANSPORTATION



PROPOSED IMPROVEMENT  
TOWNS OF CABOT - DANVILLE  
COUNTIES OF WASHINGTON-CALEDONIA  
U.S. ROUTE 2 (F.A.P.)  
MONTPELIER-ST. JOHNSBURY ROAD



BEGINNING AT A POINT ON U.S. ROUTE 2 APPROXIMATELY 5.290 MILES  
NORTHEAST OF THE MARSHFIELD - CABOT TOWN LINE AND EXTENDING IN  
A NORTHEASTERLY DIRECTION APPROXIMATELY 1.304 MILES.

LENGTH OF ROADWAY 6882.62 FEET 1.304 MILES  
LENGTH OF PROJECT 6882.62 FEET 1.304 MILES  
LENGTH OF R.O.W. PROJECT 7989.00 FEET 1.513 MILES

PROJECT INVOLVES RECONSTRUCTION AND WIDENING OF A  
PORTION OF U.S. ROUTE 2, INCLUDING GRADING, DRAINAGE,  
SUBBASE, PAVEMENT AND RELATED WORK.

BEGIN R.O.W. PROJECT  
F 028-3(26) STA. 500+00 37' LT. SECTION III

END RELINQUISHMENT # 300  
TH 117 REV. STA. 31+73 25' LT.

END APPROACH  
STA 570+00.00  
MM 0.389

BEGIN RELINQUISHMENT # 300  
TH 117 STA. 563 + 49 37' LT.

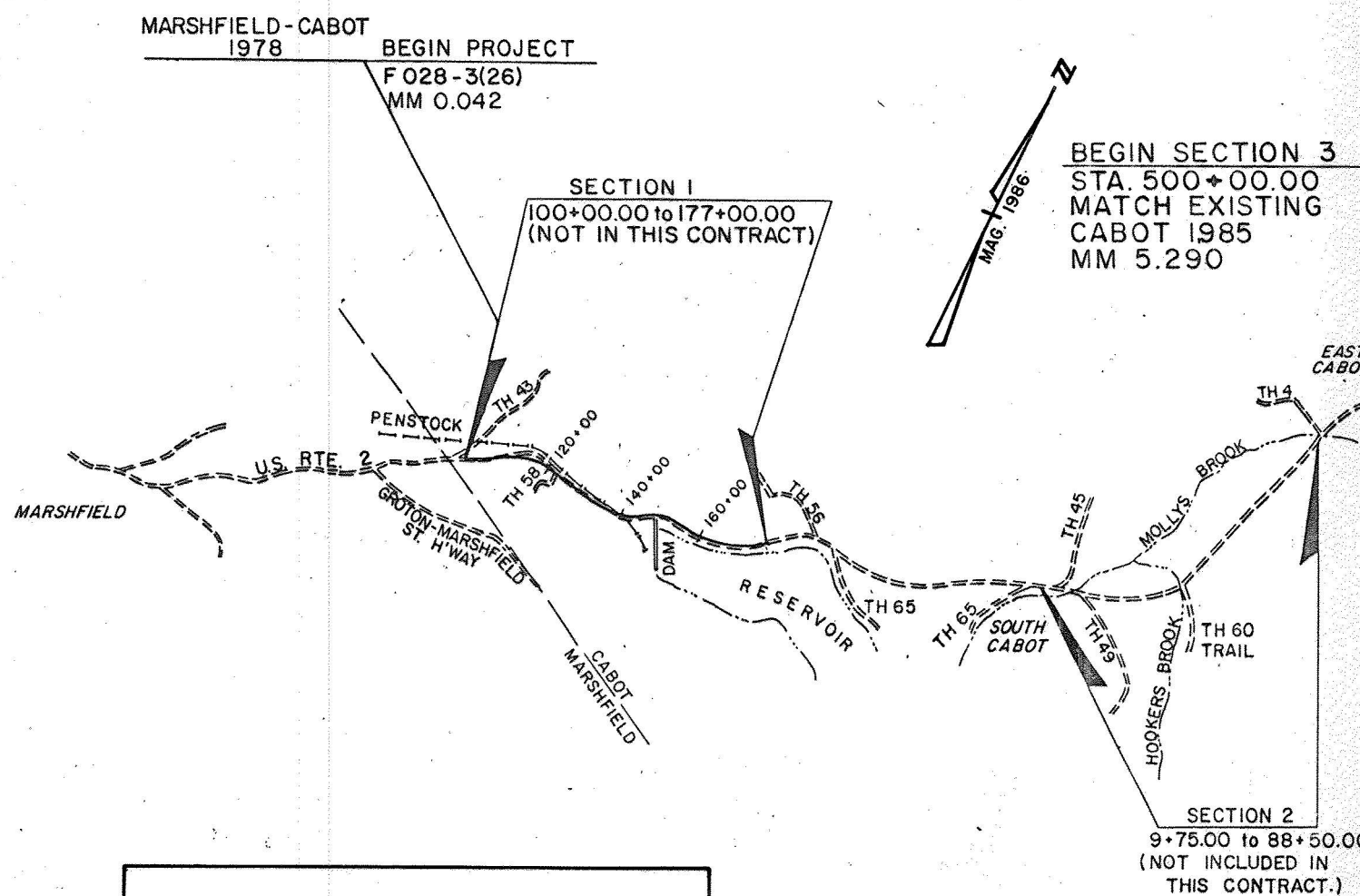
END MAINT. AGREE. AREA # 301  
STA. 363+75 37' LT. (LENGTH 25')

BEGIN MAINT. AGREE. AREA # 301  
STA. 363+80 12' LT.

END R.O.W. PROJECT  
F 028-3(26) STA. 570+95, Q SECTION III

END MAINT. AGREE. AREA # 300  
STA. 549+25 45' LT. (LENGTH 33')

BEGIN MAINT. AGREE. AREA # 300  
STA. 549+48 12' RT.



ALL DRIVES AS INDICATED ON PLANS  
ARE SUBJECT TO PERMITS PURSUANT  
TO TITLE 19 SECTION III, V.S.A.

DATUM  
VERTICAL NGVD - 1929  
HORIZONTAL N/A

- CONVENTIONAL SIGNS  
COUNTY LINE  
TOWN LINE  
LIMITS OF ACCESS  
POINT OF ACCESS  
FENCE LINE  
STONE WALL  
TRAVELED WAY  
GUARD RAIL  
RAILROAD  
SURVEY LINE  
CULVERT  
POWER POLE  
TELEPHONE POLE  
TREES  
CONTROL OF ACCESS  
PROPERTY LINE  
R.O.W. TAKING LINE  
SLOPE RIGHTS  
TOP OF CUT  
TOE OF SLOPE

THESE PLANS ARE SUBJECT TO SUCH ENGINEERING  
CHANGES AS MAY BE REQUIRED BY THE FEDERAL HIGHWAY  
ADMINISTRATION OR THE CHIEF ENGINEER.  
CONSTRUCTION IS TO BE CARRIED ON IN ACCORDANCE  
WITH THESE PLANS AND THE STANDARD SPECIFICATIONS  
FOR CONSTRUCTION DATED 1990, AS APPROVED BY THE  
FEDERAL HIGHWAY ADMINISTRATION ON MARCH 15, 1990  
FOR USE ON THIS PROJECT, INCLUDING ALL SUBSEQUENT  
REVISIONS AND SUCH REVISED SPECIFICATIONS AND  
SPECIAL PROVISIONS AS ARE INCORPORATED IN THESE PLANS.

SECTION 3 CONSTRUCTION

APPROVED [Signature] DATE 7/7/98  
for Director of Project Development

APPROVED [Signature] DATE 7/7/98  
Chief, Right of Way

BRYANT ASSOCIATES, INC.  
CONSULTING ENGINEERS  
BOSTON SYRACUSE

CABOT-DANVILLE  
F 028-3(26) SECTION III  
R.O.W. SHEET 1 OF 29 SHEETS