

Original Drawing - Ink on Polyester film meeting the requirements of 27 V.S.A. § 1403

LINES SHOWN ON THIS PLAN AS EXISTING PROPERTY LINES (P/L) ARE BELIEVED TO BE ACCURATE BUT SHOULD NOT BE RELIED UPON FOR PURPOSES UNRELATED TO THE STATE OF VERMONT'S ACQUISITION OF LAND AND RIGHTS FOR THIS PROJECT.

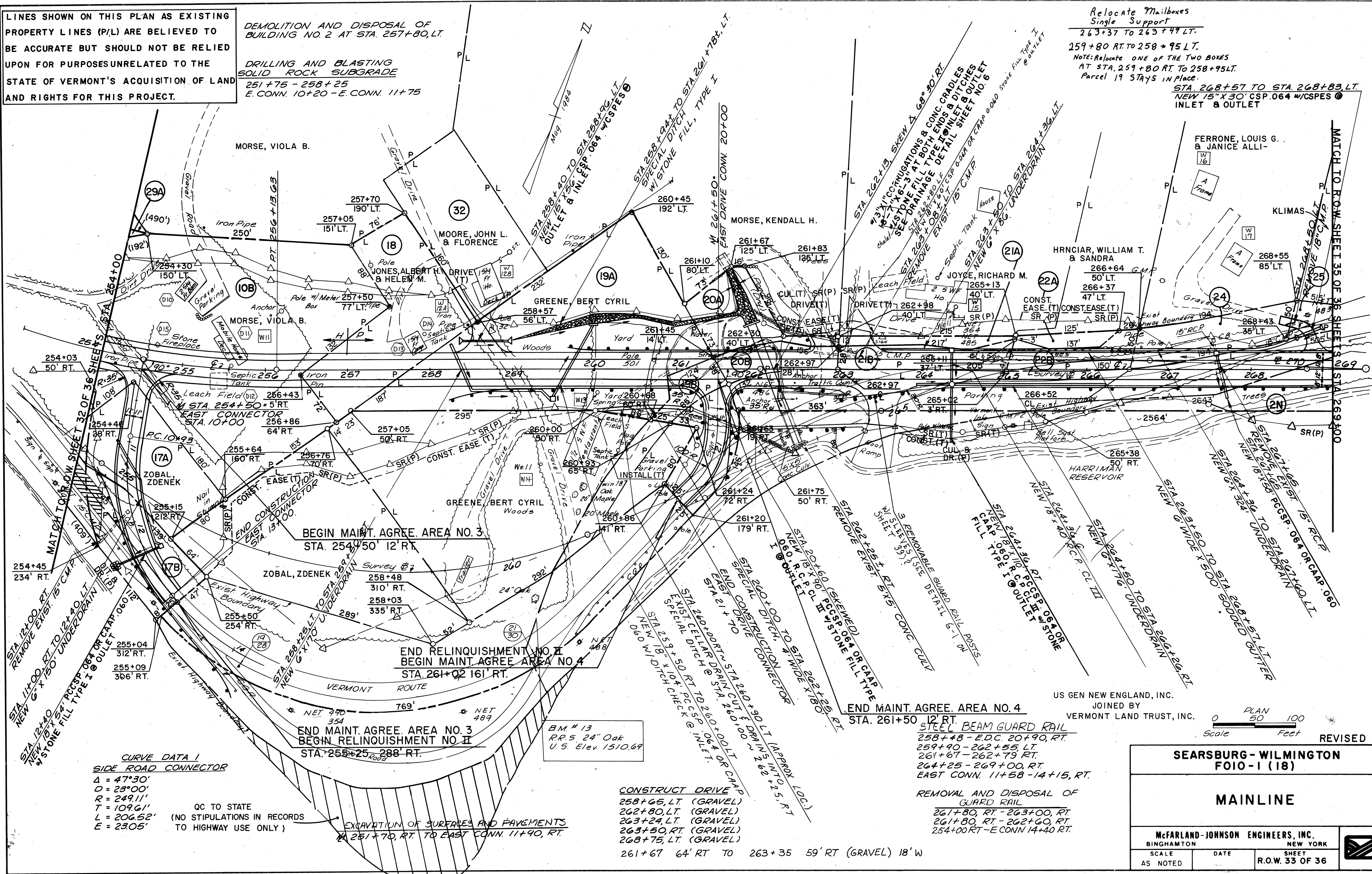
DEMOLITION AND DISPOSAL OF BUILDING NO. 2 AT STA. 257+80, LT.

DRILLING AND BLASTING SOLID ROCK SUBGRADE 251+75 - 258+25 E. CONN. 10+20 - E. CONN. 11+75

Relocate Mailboxes Single Support 263+37 TO 263+49 LT.

159+80 RT. TO 258+95 LT. NOTE: Relocate ONE OF THE TWO BOXES AT STA. 259+80 RT. TO 258+95 LT. Parcel 19 STAYS IN PLACE.

STA 268+57 TO STA 268+83, LT. NEW 15' X 30' CSP. 064 W/CSPES @ INLET & OUTLET



CURVE DATA 1 SIDE ROAD CONNECTOR Δ = 47°30' O = 23°00' R = 249.11' T = 109.61' L = 206.52' E = 23.05'

QC TO STATE (NO STIPULATIONS IN RECORDS TO HIGHWAY USE ONLY)

EXCAVATION OF SURFACES AND PAVEMENTS AT 257+70, RT. TO EAST CONN. 11+90, RT.

BM # 13 R.R. 5 24' Oak U.S. Elev. 1510.69

CONSTRUCT DRIVE 258+65, LT. (GRAVEL) 262+80, LT. (GRAVEL) 263+24, LT. (GRAVEL) 263+50, RT. (GRAVEL) 268+75, LT. (GRAVEL)

REMOVAL AND DISPOSAL OF GUARD RAIL 261+80, RT. - 263+00, RT. 261+80, RT. - 262+60, RT. 264+25 - 269+00, RT. EAST CONN. 11+58 - 14+15, RT.

261+67 64' RT TO 263+35 59' RT (GRAVEL) 18' W

US GEN NEW ENGLAND, INC. JOINED BY VERMONT LAND TRUST, INC.

Scale 0 50 100 Feet

SEARSBURG - WILMINGTON FOIO-1 (18)

MAINLINE

McFARLAND-JOHNSON ENGINEERS, INC. BINGHAMTON NEW YORK SCALE AS NOTED DATE SHEET R.O.W. 33 OF 36



IN CHARGE OF: DESIGNED BY: CHECKED BY: DETAILED BY:

REVISED