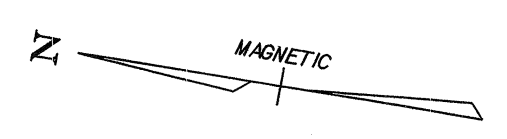


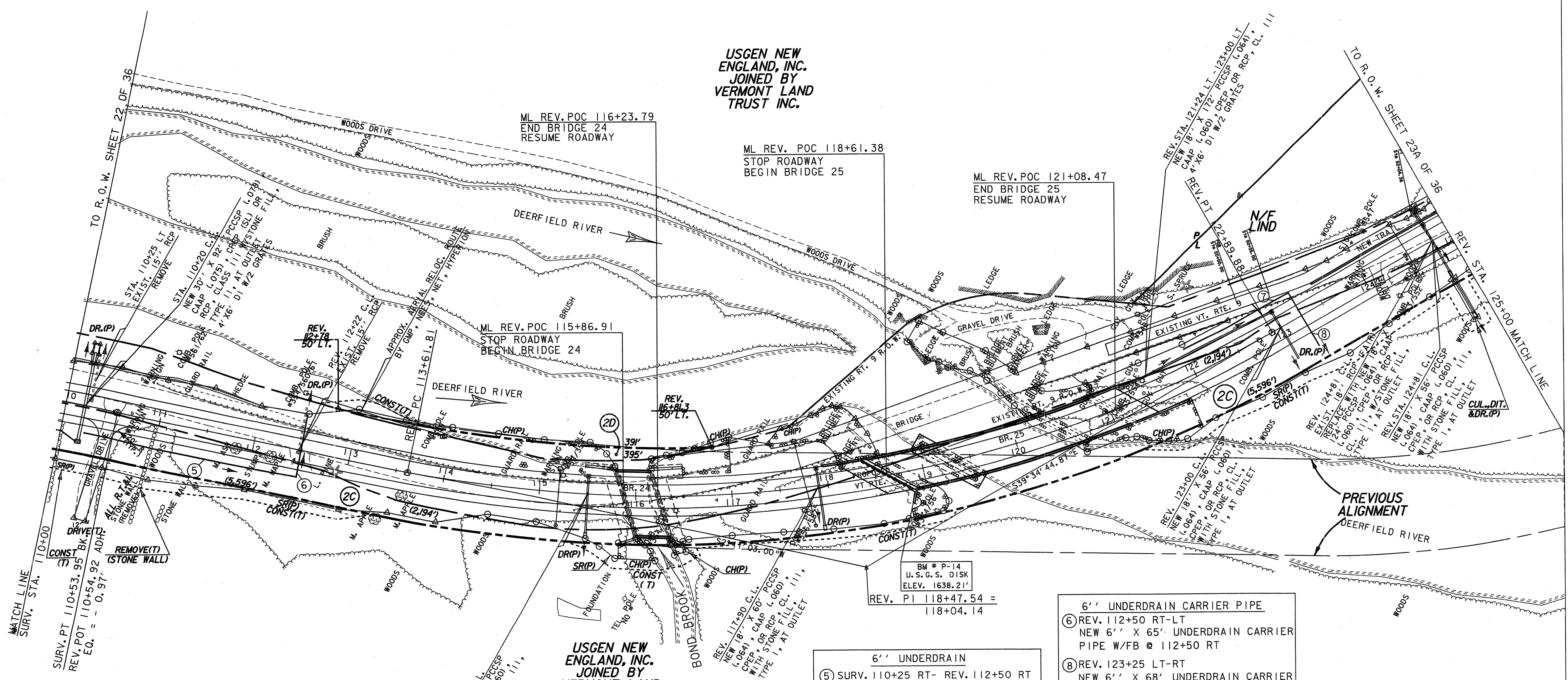
CONSTRUCT DRIVE 110+47 RT (GRAVEL) TREATED TIMBER CURB REV. 113+00 LT-REV. 118+61 LT. REV. 121+09 LT-REV. 124+83 LT. REV. 124+50 RT-REV. 125+00 RT.	STEEL BEAM GUARD RAIL 110+75 LT - 117+71.44 LT BURY THE BEGINNING IN BERM (NO TERMINAL) 121+24 LT - 125+00 LT 113+50 RT - 118+53.00 RT 122+06.20 RT - 125+00 RT	GUARD RAIL APPROACH SECTION, NETC 2 RAIL (MOD.) 117+71.44 LT - 117+96.44 LT 120+99.00 LT - 121+24.00 LT 118+53.00 RT - 118+78.00 RT 121+81.20 RT - 122+06.20 RT	CURVE DATA $\Delta = 41^\circ - 45' - 47.87''$ LT D = 4°-30' R = 1273.24' T = 485.74' L = 928.07' E = 89.51' BANK: 0.067 FT./FT.	REMOVAL & DISPOSAL OF GUARD RAIL 110+90 LT - 115+85 LT 115+36 RT - 115+88 RT 116+13 LT - 118+29 LT 116+16 RT - 118+44 LT 120+12 LT - 124+07 LT
--	--	---	--	---

MANUFACTURED TERMINAL SECTION (FLARED)
 113+12.5 RT - 113+50 RT

BRIDGE RAIL-NETC 2 RAIL
 117+96.44 LT - 120+99.00 LT
 118+78.00 RT - 121+81.20 RT



USGEN NEW ENGLAND, INC. JOINED BY VERMONT LAND TRUST INC.

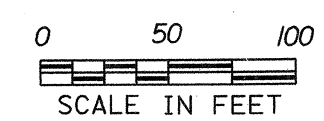


LINES SHOWN ON THIS PLAN AS EXISTING PROPERTY LINES (P/L) ARE BELIEVED TO BE ACCURATE BUT SHOULD NOT BE RELIED UPON FOR PURPOSES UNRELATED TO THE STATE OF VERMONT'S ACQUISITION OF LAND AND RIGHTS FOR THIS PROJECT.

USGEN NEW ENGLAND, INC. JOINED BY VERMONT LAND TRUST INC.

- ⑤ SURV. 110+25 RT- REV. 112+50 RT
NEW 6'' X 224' UNDERDRAIN
W/FB @ 110+25 RT
- ⑦ REV. 122+00 LT- REV. 123+25 LT
NEW 6'' X 125' UNDERDRAIN
W/FB @ 122+00 LT

- ⑥ REV. 112+50 RT-LT
NEW 6'' X 65' UNDERDRAIN CARRIER
PIPE W/FB @ 112+50 RT
- ⑧ REV. 123+25 LT-RT
NEW 6'' X 68' UNDERDRAIN CARRIER
PIPE W/FB @ 123+25 LT



PROJECT NAME:	SEARSBURG - WILMINGTON	
PROJECT NUMBER:	NHF 010-1(18)	
PLOT FILE NAME:	DD096L02	PLOT DATE: 06-JUN-2001
PROJECT LEADER:	DELLA SANTA	DRAWN BY: SQUAD B
DESIGN FILE:	T8D096/DESIGN/DD096CNULDGN	
R. O. W. SHEET 23 OF 36		

REVISED