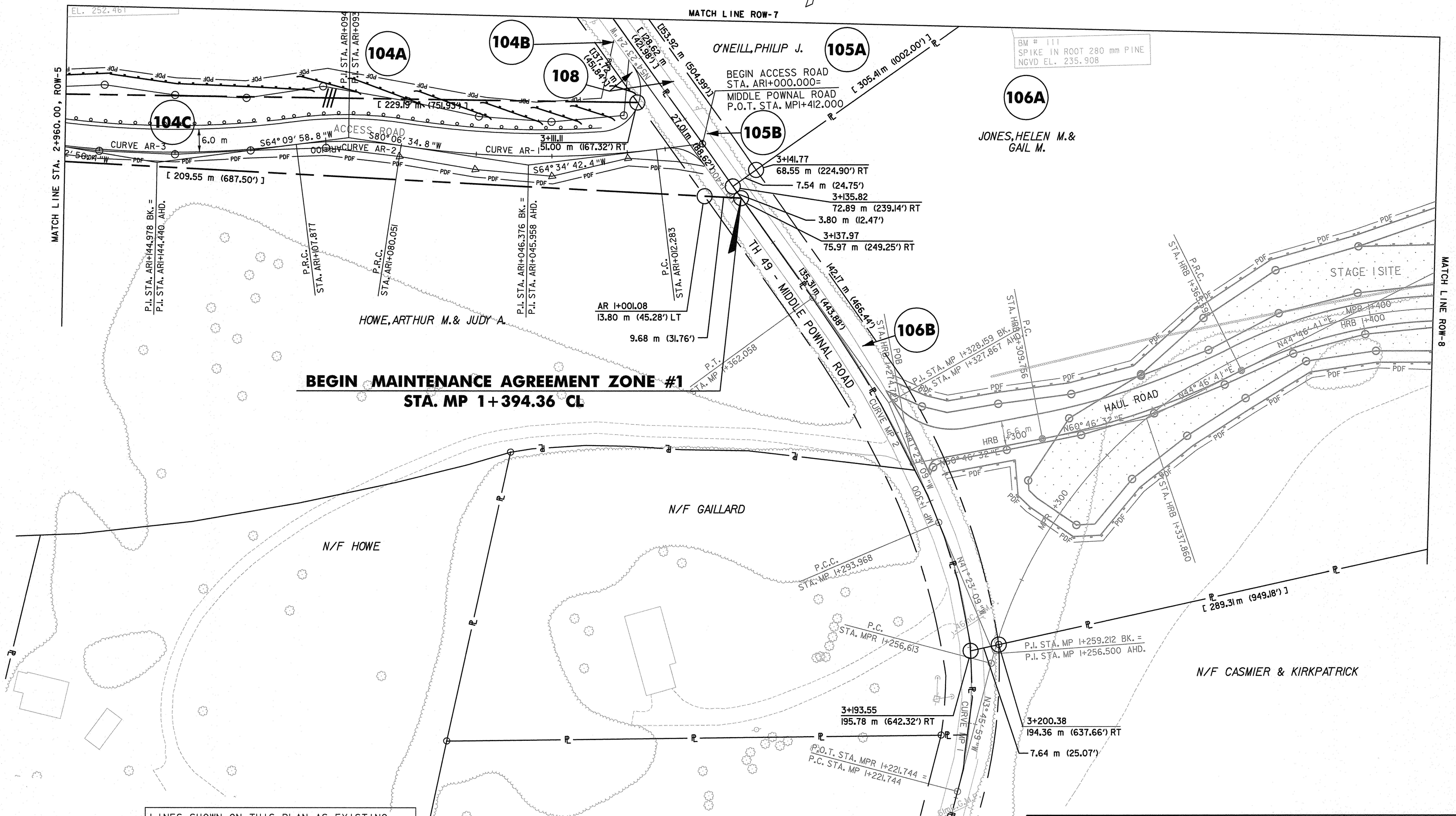
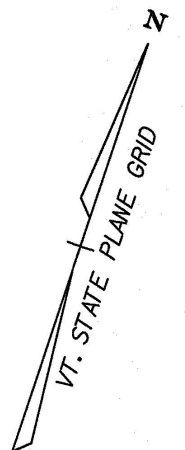


<p>CURVE AR-1</p> <p>P.C.C. = STA. ARI+012.283 P.R.C. = STA. ARI+080.051</p> <p>$\Delta = 15^\circ 31' 52.4''$ RT. R=250.000 m T=34.093 m L=67.768 m E=2.314 m $\Theta_{max} = N/A$</p>	<p>CURVE AR-2</p> <p>P.R.C. = STA. ARI+080.051 P.R.C. = STA. ARI+107.877</p> <p>$\Delta = 15^\circ 56' 36.0''$ LT. R=100.000 m T=14.004 m L=27.826 m E=0.976 m $\Theta_{max} = N/A$</p>	<p>CURVE AR-3</p> <p>P.R.C. = STA. ARI+107.877 P.R.C. = STA. ARI+181.541</p> <p>$\Delta = 16^\circ 52' 57.5''$ RT. R=100.000 m T=37.101 m L=73.664 m E=2.738 m $\Theta_{max} = N/A$</p>	<p>CURVE AR-4</p> <p>P.R.C. = STA. ARI+181.541 P.R.C. = STA. ARI+223.225</p> <p>$\Delta = 23^\circ 52' 58.6''$ LT. R=100.000 m T=21.149 m L=41.684 m E=2.212 m $\Theta_{max} = N/A$</p>	<p>CURVE AR-5</p> <p>P.R.C. = STA. ARI+223.225 P.T. = STA. ARI+243.037</p> <p>$\Delta = 11^\circ 21' 04.6''$ RT. R=100.000 m T=9.938 m L=19.812 m E=0.493 m $\Theta_{max} = N/A$</p>
--	--	--	--	---

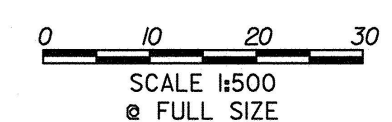


BEGIN MAINTENANCE AGREEMENT ZONE #1
STA. MP 1+394.36 CL

DATUM	
VERTICAL	NAVD 88
HORIZONTAL	NAD 83 (1992)

LINES SHOWN ON THIS PLAN AS EXISTING PROPERTY LINES P/L ARE BELIEVED TO BE ACCURATE BUT SHOULD NOT BE RELIED UPON FOR PURPOSES UNRELATED TO THE STATE OF VERMONT'S ACQUISITION OF LAND AND RIGHTS FOR THIS PROJECT.

THIS SHEET TO BE USED FOR RIGHT-OF-WAY INFORMATION ONLY



<p>R.O.W. PLAN</p> <p>ROW-6</p>	PROJECT NAME:	BENNINGTON BYPASS	PROJECT NUMBER:	NH F019-1(4)
	DESIGN FILE NAME:	α\dh\bennington\row	PLOT DATE:	01-24-06
	PROJECT LEADER:	JDP	DRAWN BY:	MBB
			CHECKED BY:	GAK
		SHEET: 10 OF 13		