

INDEX OF SHEETS

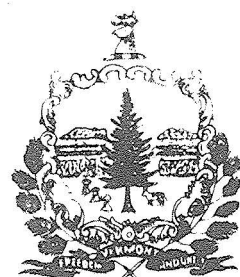
- 1 TITLE SHEET
- 2 TYPICAL SECTIONS
- 3 DRAINAGE AND QUANTITY SHEET
- 4 EARTHWORK SHEET
- 5-6 LAYOUT SHEETS
- 7-8 PAVEMENT MARKING & SIGN LOCATION SHEETS
- 9-24 CROSS SECTIONS

R.O.W. PLANS

BEGIN R.O.W. PROJECT  
M 7000 (5)S STA. 48+00 ☐

Sta. 48+00 BEGIN PROJECT  
ST JOHNSBURY M7000(5)  
CONSTRUCT SATISFACTORY APPROACH

STATE OF VERMONT  
AGENCY OF TRANSPORTATION

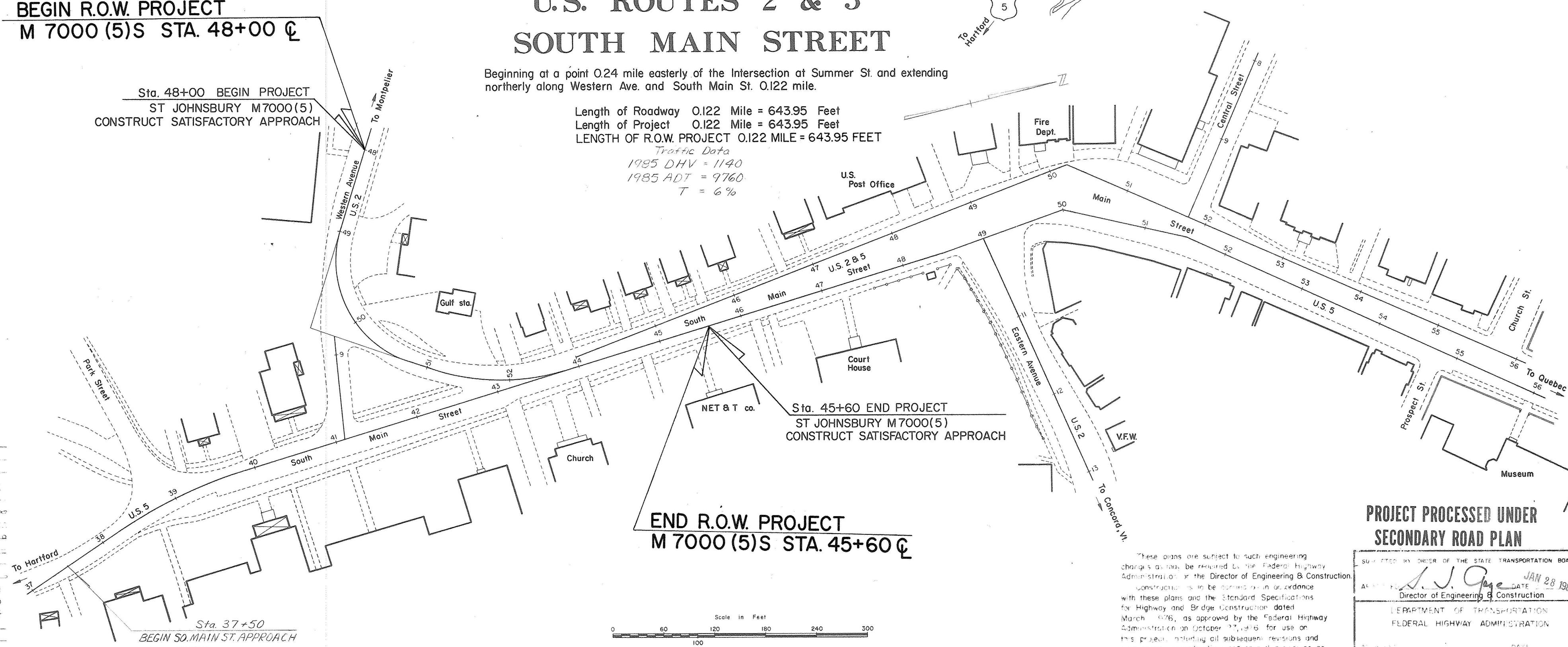
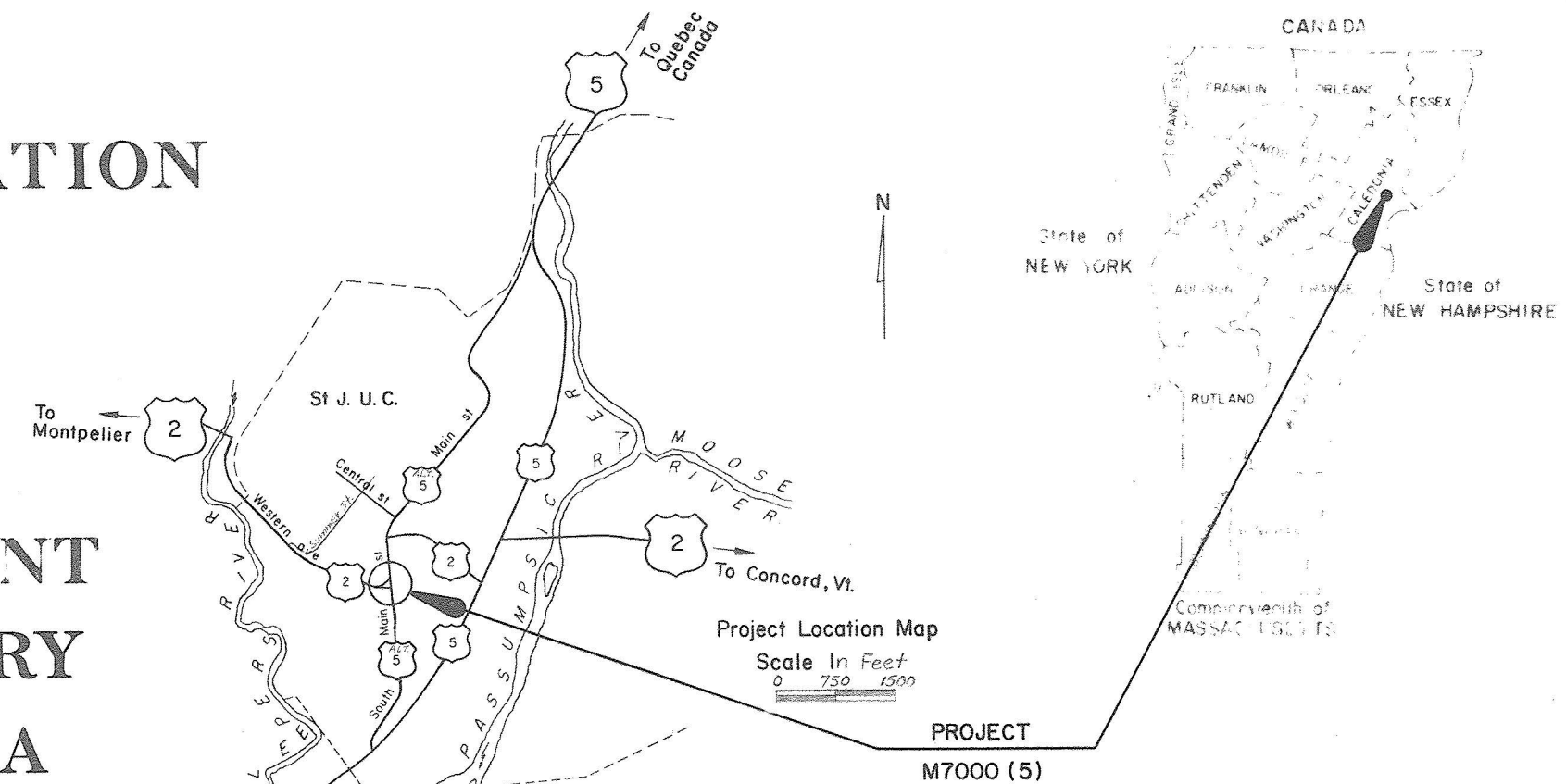


PROPOSED IMPROVEMENT  
TOWN OF ST JOHNSBURY  
COUNTY OF CALEDONIA  
U.S. ROUTES 2 & 5  
SOUTH MAIN STREET

Beginning at a point 0.24 mile easterly of the Intersection of Summer St. and extending northerly along Western Ave. and South Main St. 0.122 mile.

Length of Roadway 0.122 Mile = 643.95 Feet  
Length of Project 0.122 Mile = 643.95 Feet  
LENGTH OF R.O.W. PROJECT 0.122 MILE = 643.95 FEET

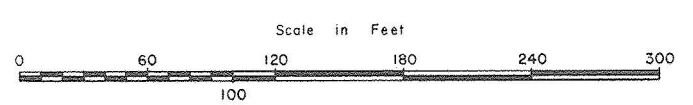
Traffic Data  
1985 DHV = 1140  
1985 ADT = 9760  
T = 6%



- CONVENTIONAL SIGNS
- COUNTY LINE
  - TOWN LINE
  - LIMIT OF ACCESS
  - POINT OF ACCESS
  - FENCE LINE
  - STONE WALL
  - TRAVELED WAY
  - GUARD RAIL
  - RAILROAD
  - SURVEY LINE
  - CULVERT
  - POWER POLE
  - TELEPHONE POLE
  - TREES
  - CONTROL OF ACCESS
  - PROPERTY LINE
  - R.O.W. TAKING LINE
  - SLOPE RIGHTS
  - TOP OF CUT
  - TOP OF SLOPE

DATUM

VERTICAL	_____
HORIZONTAL	_____



END R.O.W. PROJECT  
M 7000 (5)S STA. 45+60 ☐

Sta. 45+60 END PROJECT  
ST JOHNSBURY M7000(5)  
CONSTRUCT SATISFACTORY APPROACH

PROJECT PROCESSED UNDER  
SECONDARY ROAD PLAN

These plans are subject to such engineering changes as may be required by the Federal Highway Administration or the Director of Engineering & Construction. Construction is to be done in accordance with these plans and the Standard Specifications for Highway and Bridge Construction dated March 1976, as approved by the Federal Highway Administration on October 27, 1976 for use on this project, including all subsequent revisions and such revised specifications and special provisions as are incorporated in these plans.

APPROVED: *[Signature]*  
CHIEF PROPERTY ADMINISTRATION  
DATE: 1-28-80

STATE OF VERMONT  
DEPARTMENT OF TRANSPORTATION  
FEDERAL HIGHWAY ADMINISTRATION  
DIVISION ADMINISTRATOR

PROJECT M 7000(5)S  
SHEET 1 OF 5 SHEETS

STATE OF VERMONT  
DEPARTMENT OF HIGHWAYS  
RIGHT-OF-WAY PLANS  
DETAIL SHEET

TABLE OF PROJECT PROPERTY ACQUISITION

PARCEL NO.	GRANTOR	SHEET NO.	BEGINNING STATION	ENDING STATION	TAKING	REM.	RIGHTS	TITLE TAKEN	DATE	TOWN OR CITY RECORDED	BK.	PG.	REMARKS
1A	ST. JOHNSBURY ACADEMY		WEST. AVE. "A" LINE 49+55 RT 48+49 RT	MAIN STREET 40+85 LT 40+27 LT	0.01 A±		SLOPE (T) (0.04 A±)						(150 SF±) (1800 SF±)
1B			MAIN STREET 41+29 LT 41+34 LT	MAIN STREET 42+62 LT 51+62 LT	0.06 A±		SLOPE (T) (0.03 A±)						(2700 SF±) (1450 SF±)
2	C.N. BROWN COMPANY		WEST. AVE. "A" LINE 50+48 LT 50+15 LT 50+02 LT 50+21 LT	WEST. AVE. "A" LINE 51+52 LT 50+21 LT 50+31 LT 50+82 LT	0.01 A±		CUL. (P) CONST. EASE. (T) SLOPE (T) (0.01 A±)						(200 SF±) (450 SF±)
3	GRIMES, JAMES G. JR. & ALICE L.		WEST. AVE. "A" LINE 51+98 LT 50+82 LT	WEST. AVE. "A" LINE 50+91 LT			DRIVE (T) SLOPE (T) (6 SF±)						
4	ST. JOHNSBURY WATER & SEWER												UTILITY
5	NEW ENGLAND TELEPHONE & TELEGRAPH CO.												UTILITY
6	CENTRAL VERMONT PUBLIC SERVICE CORP.												UTILITY
7	GAS COMPANY OF VERMONT, INC.												UTILITY

TABLE OF REVISIONS

REVISION NO.	SHEET NO.	DESCRIPTION OF REVISION	DATE	MADE BY	APPROVED BY

MADE BY: S.H.F. DATE 1-28-80

CHECKED BY: W.E.B. DATE 1-28-80

DR. RT. — DRAINAGE RIGHT  
DIT. RT. — DITCHING RIGHT  
CH. RT. — CHANNEL RIGHT  
DRIVE RT. — DRIVE RIGHT  
CUL. RT. — CULVERT RIGHT  
ⓓ — DEMOLITION OR REMOVAL  
Ⓜ — WATER SOURCES

————— PRESENT R.O.W.  
/// ——— TAKING WITHOUT ACCESS  
——— P ——— TAKING WITHOUT ACCESS ALONG PROPERTY LINES  
————— TAKING WITH ACCESS  
(P) PERMANENT EASEMENT  
(T) TEMPORARY EASEMENT

LEGEND

——— CONST. EASE. ——— CONST. EASEMENT  
——— SR ——— SR ——— SLOPE RIGHTS  
——— P ——— P ——— PROPERTY LINE  
—△—△—△— TOP OF CUT  
—○—○—○— TOE OF SLOPE

APPROVED *Thomas B. Mayo* DATE 1-28-80  
CHIEF OF PLANS & TITLES

PROJECT ST. JOHNSBURY  
NO. M 7000 (5) S  
SHEET 3 OF 5

**Cast-in-Place Cement Concrete Curb, Type B**  
 Main St.  
 39+18 - 42+91, Rt.  
 43+17 - 43+52, Rt.  
 40+28 - 40+97, Lt.  
 42+97 - 43+02, Rt.  
 Western Ave "B" Line  
 8+80 - 9+78, Rt.

**Construct Drive**  
 Western Ave "A" Line  
 51+43, Lt.  
 51+98, Lt.  
 Main St.  
 40+12, Lt.  
 43+09, Rt.

**REMOVAL OF SMALL TREES**  
 WESTERN AVE "B" LINE  
 STA. 9+22 RT. (12" LOC)  
 STA. 9+36 RT. (12" ELH)  
**Remove Existing Sidewalk**  
 Main St. (Island)  
 41+32 - 42+55, Lt.

**Construct Sidewalk Ramp**  
 42+94, Rt. Main St. Type 1  
 51+74, Lt. Western Ave "A" Line, Type 4  
 51+78 & Western Ave "A" Line, Type 3  
 40+30, Lt. Main St. Type 3  
 43+13, Rt. Western Ave "A" Line, Type 3  
 50+16, Lt. Western Ave "A" Line, Type 3  
 51+90, Lt. Western Ave "A" Line, Type 3

Western Ave "A" Line  
 48+13 - 49+99, Rt.  
 50+16 - 51+21, Lt.  
 51+60 - 51+71, Lt.  
 51+77 - 51+90, Lt.  
 52+06 - 52+28, Lt.

**Portland Cement Concrete Sidewalk-5"**  
 Main St.  
 40+30 - 40+97, Lt.  
 Western Ave "B" Line  
 8+80 - 9+78, Rt.  
 Western Ave "A" Line  
 48+13 - 49+93, Rt.  
 50+16 - 51+17, Lt.  
 51+64 - 51+90, Lt.  
 51+75 - 51+81 (Island)  
 Main St.  
 42+91 - 42+97, Rt.  
**Portland Cement Concrete Sidewalk-8"**  
 Western Ave "A" Line  
 51+17 - 51+64, Lt.

**Cast-in-Place Cement Concrete Curb, Type A**  
 Main St.  
 41+50 - 42+55, Lt. (Island)  
 Western Ave "B" Line  
 8+81 - 9+22, Lt. (Island)  
 9+12 - 9+78, Lt. (Island)  
 Western Ave "A" Line  
 50+48 - 51+43, Rt. (Island)  
 51+85 - 51+75 (Island)  
 51+81 - 51+92 (Island)

37+50  
 BEGIN MAIN ST. APPROACH

P.O.T. 37+00.00

**Curve Data**  
 $\Delta$  16°-41'-30" Rt.  
 D 10°  
 R 572.96'  
 T 84.05  
 L 166.92  
 E 6.13

P.O.T. 41+10.34 =  
 W. Ave. "B-Line"  
 P.O.T. 10+00.00

W. Ave. "A-Line"  
 P.I. 51+89.45 =  
 P.O.T. 43+00.00  
 35°-45'-30" Lt.

BM No. 1 Elev. 710.00  
 Sta. 38+59 119' Rt.  
 Top conc. step north  
 side of entrance  
 (not marked)

REMOVE EXISTING DI PLUG EXISTING  
 PIPES w/ CONCRETE CLASS B  
 WESTERN AVE. STA. 49+79 RT.  
 WESTERN AVE. "B" LINE 9+05 LT.  
 SO. MAIN ST. 42+50 LT.  
 SO. MAIN ST. 43+39 RT.  
 SO. MAIN ST. 42+88 RT.

BM No. 2 Elev. 697.66  
 Sta. 42+47 80' Rt.  
 Top conc. step s-west  
 corner  
 (not marked)

ALT. U.S. 5  
 2% T  
 3300 (455)  
 1450  
 215  
 SOUTH MAIN ST.  
 1250  
 4700  
 ALT. U.S. 5  
 6 3/4 T  
 9760 (1140)  
 4700  
 520

**TRAFFIC DATA KEY**  
 000 = 1755 ADF Est.  
 (000) = 1755 DIHV Est.  
 -000 = 1755 DORV Est.

**Curve Data**  
 $\Delta$  88°-17'-15" Lt.  
 D 46°  
 R 124.56'  
 T 120.89  
 L 191.93  
 E 49.02  
 Match Existing Cross Slope

GRIMES, JAMES G.  
 & ALICE L.  
**Curve Data**  
 $\Delta$  35°-45'-30" Lt.  
 D 22°  
 R 260.44'  
 T 84.02  
 L 162.54  
 E 13.22  
 Match Existing Cross Slope

Match to sheet 5 of 5

SURVEYED BY \_\_\_\_\_ DATE \_\_\_\_\_  
 DRAWN BY \_\_\_\_\_ DATE \_\_\_\_\_  
 TRACED BY Rod S DATE 5-79  
 ST JOHNSBURY  
 PROJ. M no. 7000 (5) S  
 SHEET 4 OF 5

SCALE IN FEET  
 0 10 20 40

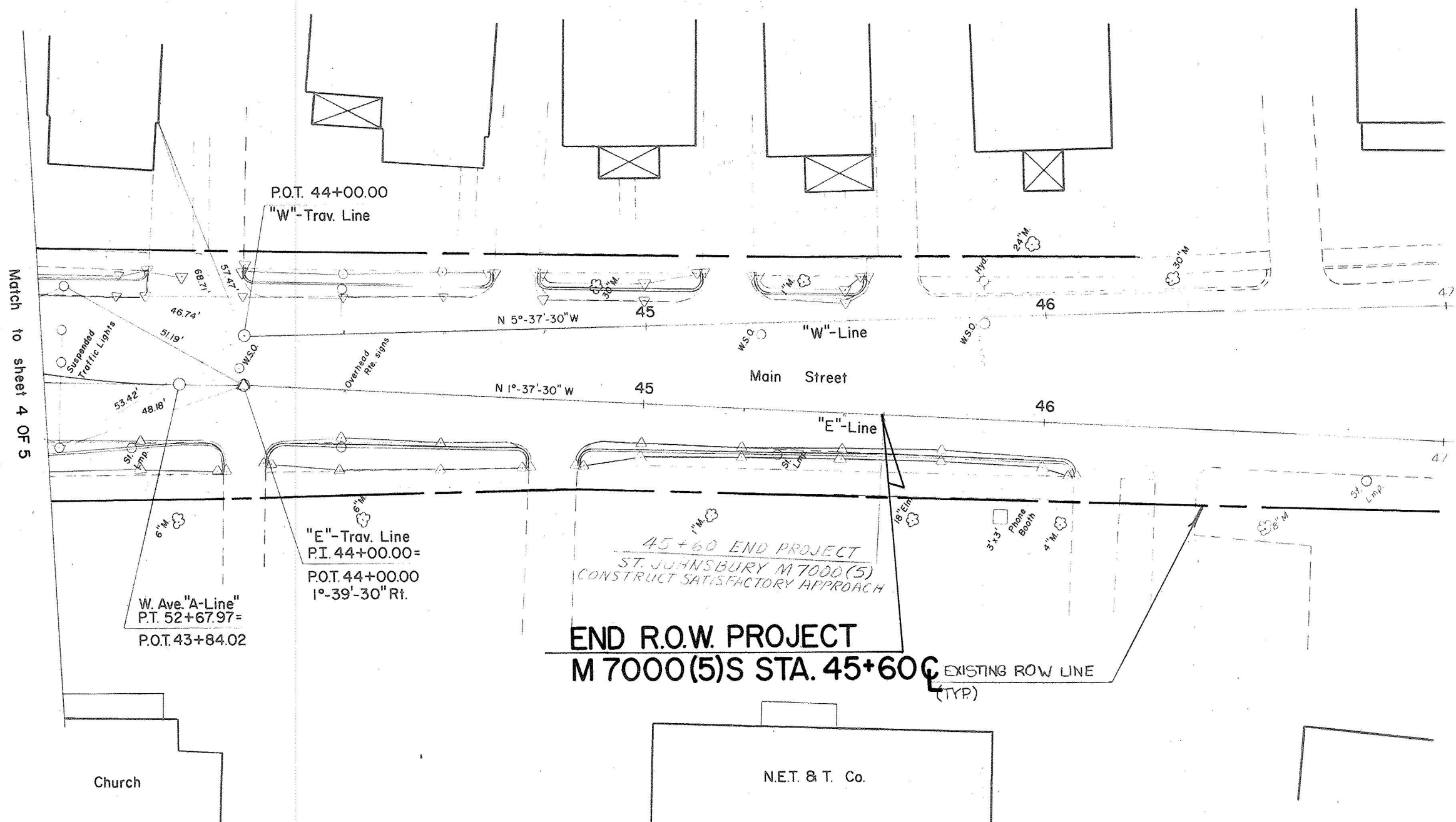
Cast-in-Place Cement Concrete Curb, Type B

Main St.  
43+52 - 43+96, Rt. E-Line  
44+06 - 44+72, Rt. E-Line  
44+84 - 46+09, Rt. E-Line  
44+00 - 44+63, Lt. W-Line  
44+73 - 45+15, Lt. W-Line  
45+27 - 45+55, Lt. W-Line  
Western Ave "A" Line  
52+28 - 52+59, Lt.

CONSTRUCT DRIVE

Western Ave "A" Line  
52+65 Lt.  
Main St.  
44+01, Rt. E-Line  
44+78, Rt. E-Line  
46+14, Rt. E-Line  
44+68, Lt. W-Line  
45+21, Lt. W-Line  
45+61, Lt. W-Line

REMOVAL OF SMALL TREES  
Main St. "W" Line  
44+88, Lt. (30' M.)



SCALE IN FEET  
0 10 20 40

DATE	
BY	
REVISIONS	
NO.	
PLAN	
NOTE BOOK	
NO.	

DATE	
BY	
REVISIONS	
NO.	
PROFILE	
NOTE BOOK	
NO.	

SURVEYED BY \_\_\_\_\_ DATE \_\_\_\_\_  
 DRAWN BY \_\_\_\_\_ DATE \_\_\_\_\_  
 TRACED BY Red S. DATE 6-79  
 ST JOHNSBURY  
 PROJ. M NO. 7000 (5)S  
 SHEET 5 OF 5