

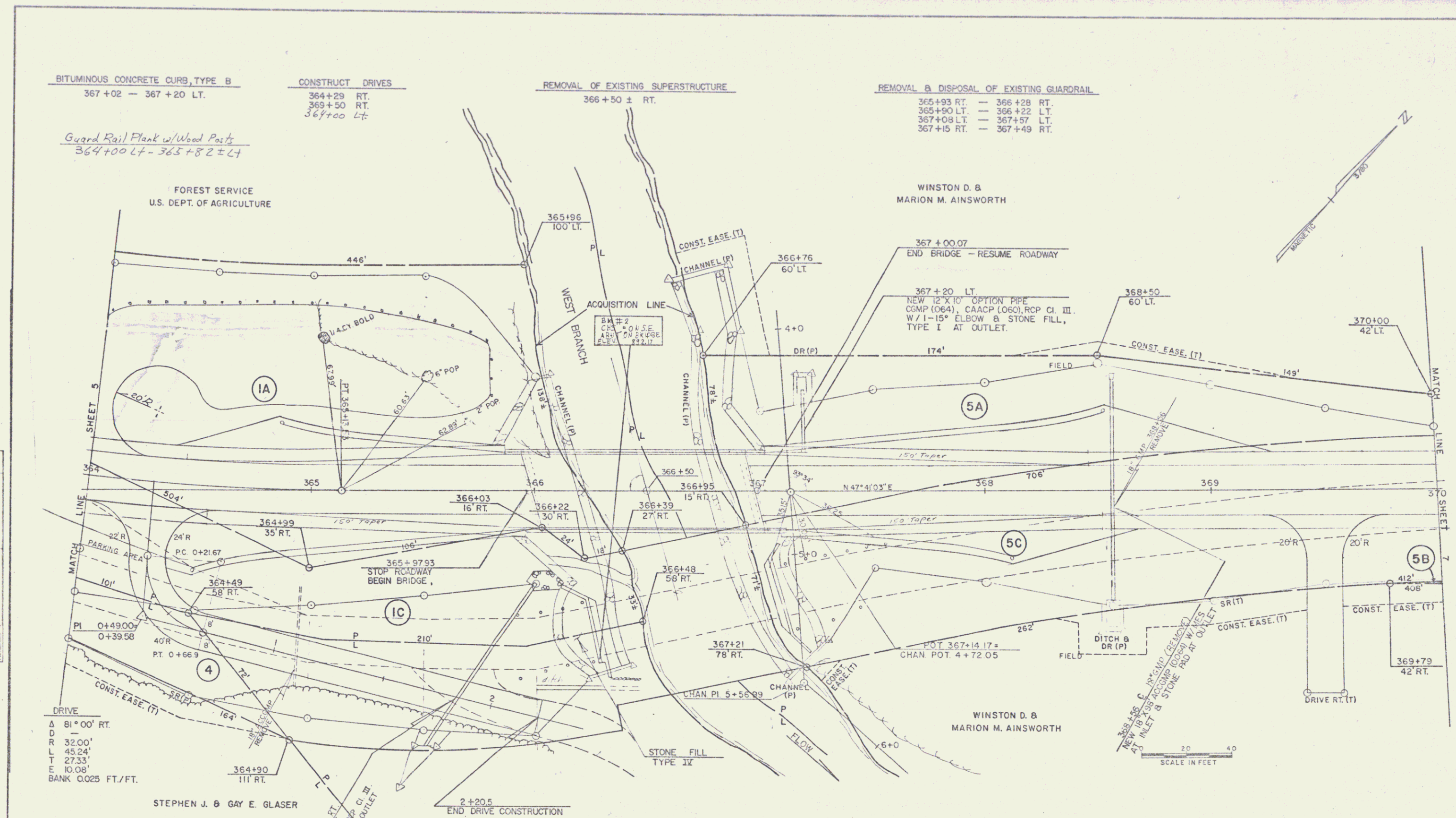
BITUMINOUS CONCRETE CURB, TYPE B
367+02 - 367+20 LT.

CONSTRUCT DRIVES
364+29 RT.
369+50 RT.
369+00 Lt.

REMOVAL OF EXISTING SUPERSTRUCTURE
366+50 ± RT.

REMOVAL & DISPOSAL OF EXISTING GUARDRAIL
365+93 RT. - 366+28 RT.
365+90 LT. - 366+22 LT.
367+08 LT. - 367+57 LT.
367+15 RT. - 367+49 RT.

Guard Rail Flank w/Wood Posts
364+00 Lt - 363+82 ± Lt



DATE	
BY	
SCALE	
PROJECT	
NO.	
PLAN	
NOTE BOOK	
NO.	

DRIVE
Δ 81'00" RT.
D 32'00"
R 45'04"
L 27'33"
E 10'08"
BANK 0.025 FT./FT.

STEPHEN J. & GAY E. GLASER

STATE OF VERMONT

EXCAVATION & REMOVAL OF ROAD SURFACES & PAVEMENT
364+75 - 367+75 RT.

BREAKAWAY CABLE TERMINAL FOR GUARDRAIL STEEL BEAM W/ WOOD POSTS, TYPE II
367+87 RT. - 368+72 RT.
368+28 LT. - 368+53 LT.
364+36.5 LT. - 364+61.5 LT.
364+45.5 RT. - 364+70.5 RT.

GUARDRAIL APPROACH SECTION, TYPE I
365+36.5 LT. - 365+86.5 LT.
365+45.5 RT. - 365+95.5 RT.
367+03 LT. - 367+33 LT.
367+12 RT. - 367+62 RT.

GUARDRAIL, STD. STEEL BEAM W/ WOOD POSTS, TYPE II
364+41.5 LT. - 365+36.5 LT.
364+70.5 RT. - 365+45.5 RT.
367+53 LT. - 369+29 LT.
367+62 RT. - 367+87 RT.

VT ROUTE 73
SURVEYED BY _____ DATE _____
DRAWN BY _____ DATE _____
TRACED BY _____ DATE _____
ROCHESTER
PROJ. FH-BRS NO. 0162 (B) S
SHEET 6 OF 8 SHEETS 6