

**BREAKAWAY CABLE TERMINAL**  
 10+45 RT ~ 10+70 RT  
 11+65 LT ~ 11+90 LT  
 13+70 LT ~ 13+95 LT  
 13+55 RT ~ 13+80 RT

**STEEL BEAM GUARD RAIL**  
 10+70 RT ~ 11+95 RT  
 11+90 LT ~ 12+15 LT  
 13+45 LT ~ 13+70 LT  
 13+30 RT ~ 13+55 RT

**EROSION MATTING**  
 14+00 RT ~ 15+50 RT  
 14+75 LT ~ 15+50 LT

**CONSTRUCT DRIVE**  
 14+50 LT (12' GRAVEL)

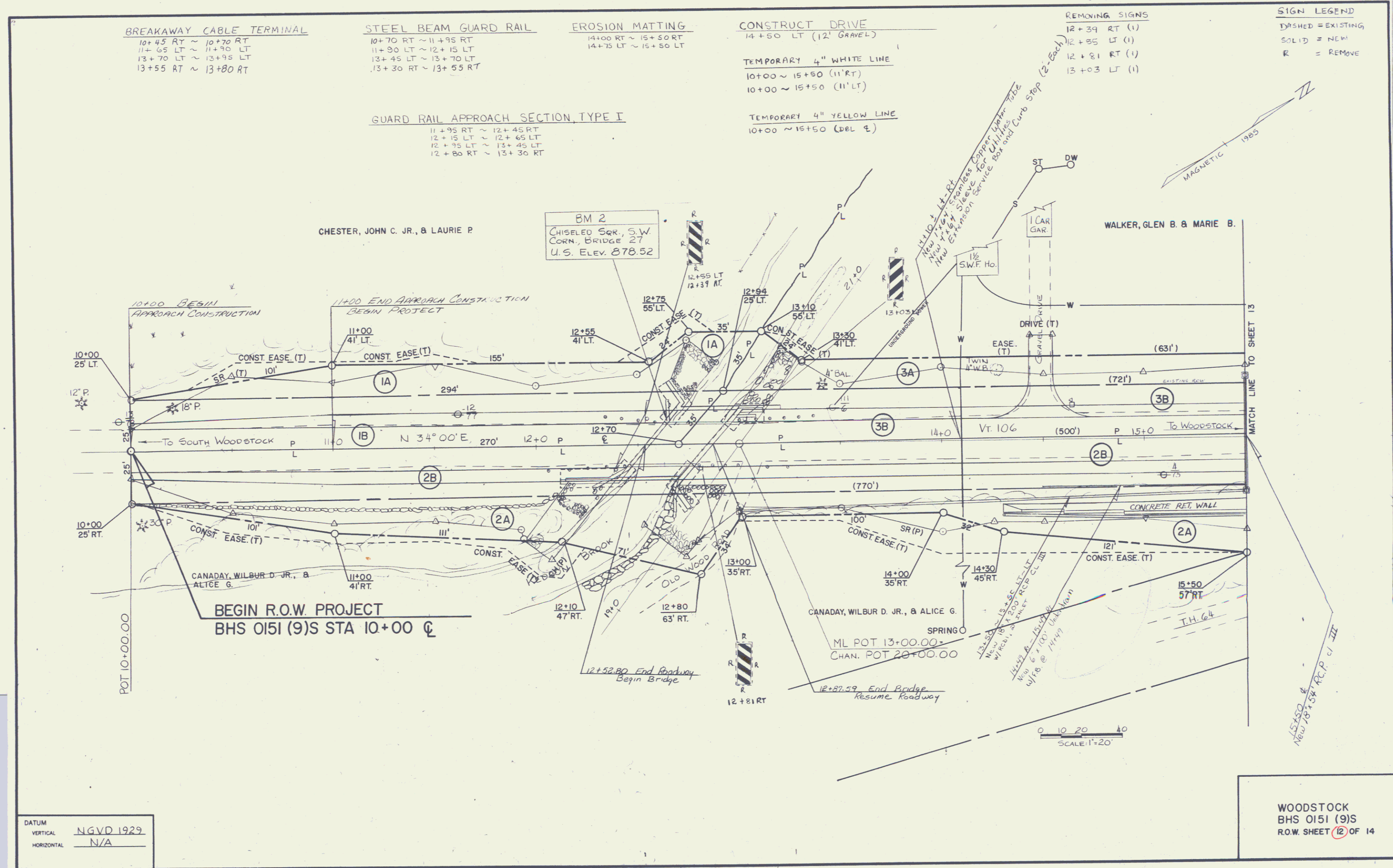
**TEMPORARY 4" WHITE LINE**  
 10+00 ~ 15+50 (11' RT)  
 10+00 ~ 15+50 (11' LT)

**TEMPORARY 4" YELLOW LINE**  
 10+00 ~ 15+50 (DBL  $\Phi$ )

**REMOVING SIGNS**  
 12+39 RT (1)  
 12+85 LT (1)  
 12+81 RT (1)  
 13+03 LT (1)

**SIGN LEGEND**  
 DASHED = EXISTING  
 SOLID = NEW  
 R = REMOVE

**GUARD RAIL APPROACH SECTION, TYPE I**  
 11+95 RT ~ 12+45 RT  
 12+15 LT ~ 12+45 LT  
 12+95 LT ~ 13+45 LT  
 12+80 RT ~ 13+30 RT



DATUM  
 VERTICAL NGVD 1929  
 HORIZONTAL N/A

WOODSTOCK  
 BHS 0151 (9)S  
 R.O.W. SHEET 12 OF 14