

Removal and Disposal of Existing Guardrail

M 338150 LT - M 340100 LT
 M 339165 BT - M 340100 ET
 M 340100 BT - M 342100 LT
 M 342100 LT - TH#49 21460 LT
 TH#49 20150 BT - M 343100 LT

Steel Beam Guardrail

M 338150 LT - TH#49 21460 LT
 M 340100 LT - M 342100 ET

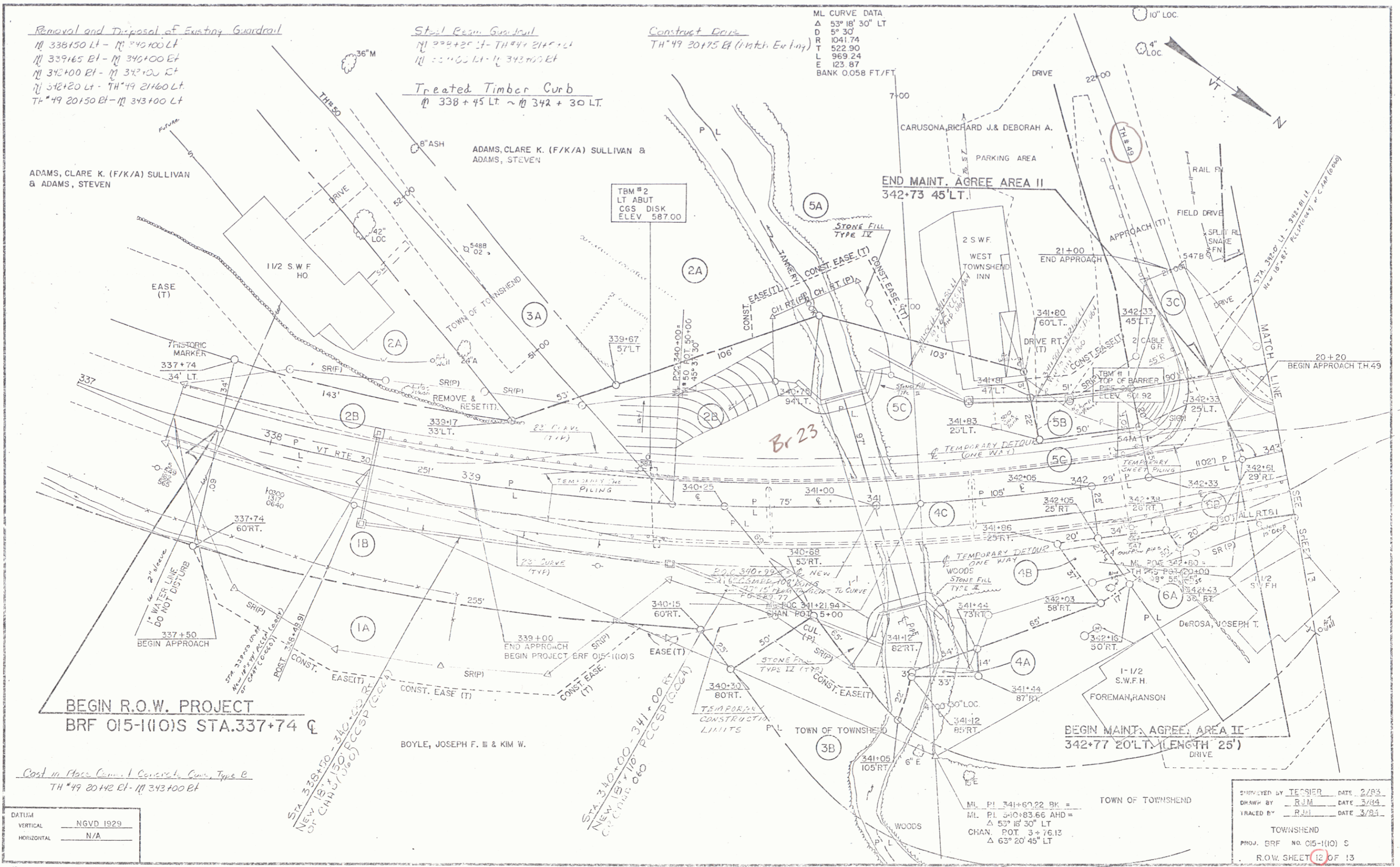
Treated Timber Curb

M 338145 LT - M 342130 LT

Construct Drive

TH#49 20115 ET (Match Existing)

ML CURVE DATA
 Δ 53° 18' 30" LT
 D 5° 30'
 R 1041.74
 T 522.90
 L 969.24
 E 123.87
 BANK 0.058 FT/FT



DATUM	—	NGVD 1929
VERTICAL	—	N/A
HORIZONTAL	—	N/A

Cost in Place Concrete Curbs, Type B
 TH#49 20142 ET - M 343100 BT

STA 338+50 - 340+00
 NEW CHAN. 15' x 15' (CCSP/CCG)

STA 340+00 - 341+00 ET
 NEW CHAN. 15' x 15' (CCSP/CCG)

ML PI 341+67.22 BK =
 ML PI 340+83.66 AHD =
 Δ 53° 18' 30" LT
 CHAN. ROT. 3 + 76.12
 Δ 63° 20' 45" LT

DESIGNED BY TESSIER DATE 2/93
 DRAWN BY RJM DATE 3/94
 TRACED BY RJM DATE 3/94
 TOWNSHEND
 PROJ. BR. NO. 015-1(10) S
 R.O.W. SHEET 12 OF 13

JAN 06 1993

12