

Drawn 11-05-01 dta

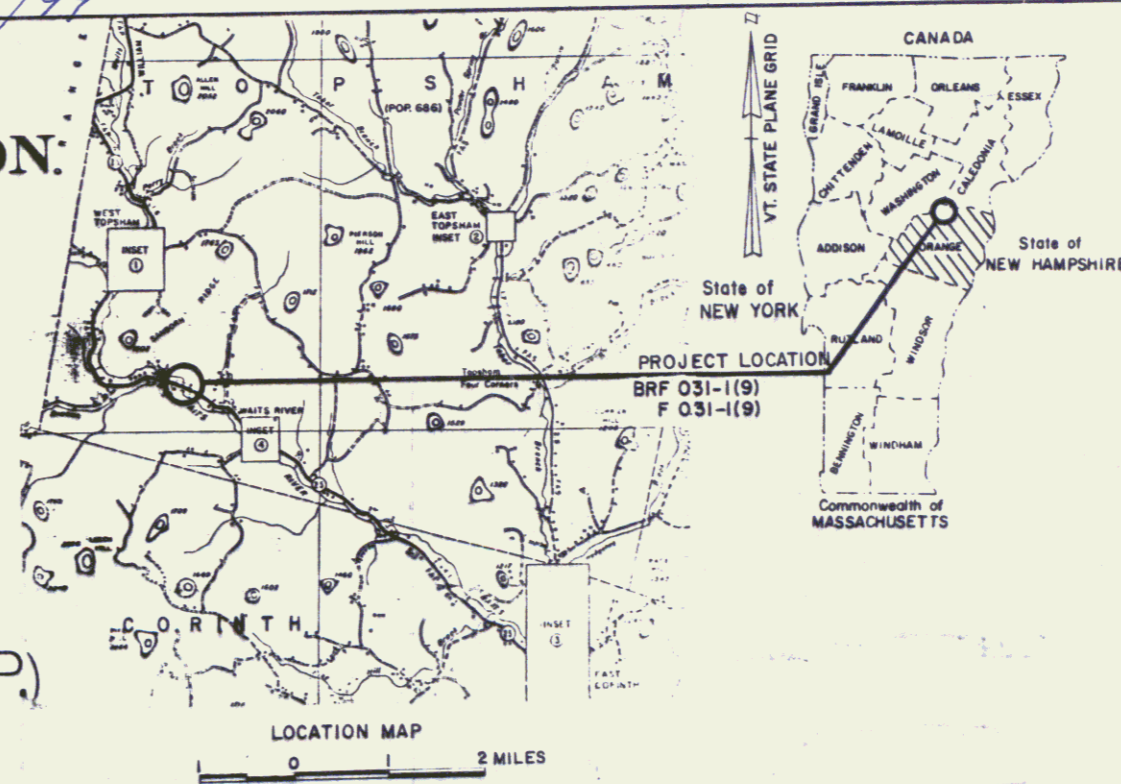
DAICHD 6/4/99

# STATE OF VERMONT AGENCY OF TRANSPORTATION



## PROPOSED IMPROVEMENT **TOWN OF TOPSHAM** COUNTY OF ORANGE **VT. RTE. 25** (BR. NO. 16) (F.A.P.)

BEGINNING AT A POINT ON VT. RTE. NO. 25 IN THE TOWN OF TOPSHAM 2.332 MI. NORTHERLY OF THE CORINTH-TOPSHAM TOWN LINE AND EXTENDING NORTHWESTERLY 0.402 MI.

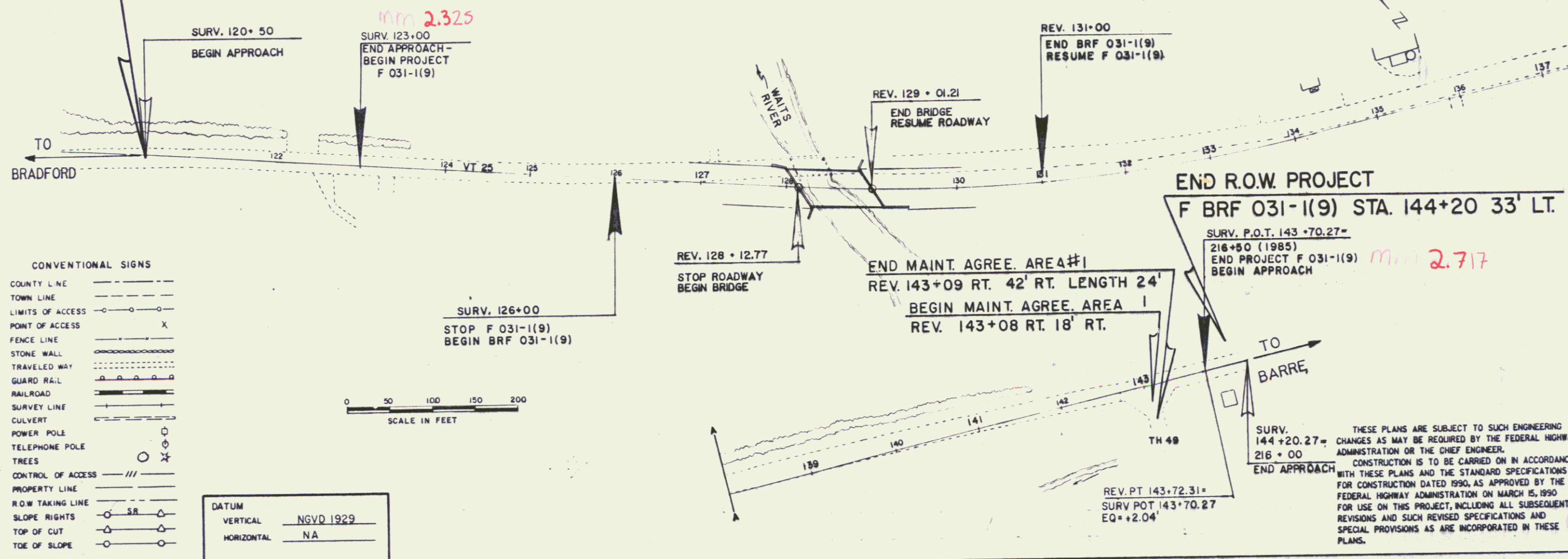


R.O.W. PLANS

LENGTH OF ROADWAY 1983.87 FT. = 0.376 MILES  
LENGTH OF BRIDGE 88.44 FT. = 0.017 MILES  
LENGTH OF PROJECT 2072.31 FT. = 0.392 MILES  
LENGTH OF R.O.W. PROJ. 2372.04 FT. = 0.449 MILES

PROJECT DESCRIPTION  
PROJECT CONSISTS OF REPLACEMENT OF BRIDGE NO. 16 AND RECONSTRUCTION OF ROADWAY & APPROACHES INCLUDING GRADING, DRAINAGE AND PAVING ON IMPROVED ALIGNMENT AND GRADE.

BEGIN R.O.W. PROJECT  
F BRF 031-1(9) STA. 120+50 3' RT.



CONVENTIONAL SIGNS

COUNTY LINE	---
TOWN LINE	---
LIMITS OF ACCESS	---
POINT OF ACCESS	X
FENCE LINE	---
STONE WALL	---
TRAVELED WAY	---
GUARD RAIL	---
RAILROAD	---
SURVEY LINE	---
CULVERT	---
POWER POLE	○
TELEPHONE POLE	○
TREES	★
CONTROL OF ACCESS	///
PROPERTY LINE	---
R.O.W. TAKING LINE	---
SLOPE RIGHTS	○ SR ○
TOP OF CUT	△
TOE OF SLOPE	○

DATUM

VERTICAL	NGVD 1929
HORIZONTAL	NA

Pin# 78F239

ALL DRIVES AS INDICATED ON PLANS ARE SUBJECT TO PERMITS PURSUANT TO TITLE 19 SECTION III, V.S.A.

JUN 19 1997

THESE PLANS ARE SUBJECT TO SUCH ENGINEERING CHANGES AS MAY BE REQUIRED BY THE FEDERAL HIGHWAY ADMINISTRATION OR THE CHIEF ENGINEER. CONSTRUCTION IS TO BE CARRIED ON IN ACCORDANCE WITH THESE PLANS AND THE STANDARD SPECIFICATIONS FOR CONSTRUCTION DATED 1990, AS APPROVED BY THE FEDERAL HIGHWAY ADMINISTRATION ON MARCH 15, 1990 FOR USE ON THIS PROJECT, INCLUDING ALL SUBSEQUENT REVISIONS AND SUCH REVISED SPECIFICATIONS AND SPECIAL PROVISIONS AS ARE INCORPORATED IN THESE PLANS.

APPROVED: <i>Scott B. MacArthur</i> DATE: 10/14/90 Dir., Dept of Planning & Reconstruction
APPROVED: <i>John N. Baker</i> DATE: 10/24/90 ES Chief, Property Administration
TOPSHAM STP F BRF 031-1(9) R.O.W. SHEET 1 OF 12

TABLE OF PROJECT PROPERTY ACQUISITION

STATE OF VERMONT  
AGENCY OF TRANSPORTATION  
RIGHT OF WAY PLANS  
DETAIL SHEET

PARCEL NO.	GRANTOR	SHEET NO.	BEGINNING STATION	ENDING STATION	TAKING	REM.	RIGHTS	TITLE TAKEN	DATE	TOWN OR CITY RECORDED	BK.	PG.	REMARKS	REVISION NO.	SHEET	DESCRIPTION OF REVISION	DATE	MADE BY	APPROVED BY
1	HAYS, THOMAS CARTER & GISELE & DEBONTIN, JEROME	9	120+50 LT. 120+63 LT. 120+80 LT. 120+70 LT. 120+65 RT. 120+82 RT. 120+75 RT.	122+45 RT. 122+15 LT. 122+15 LT. 122+12 LT. 122+47 RT. 122+46 RT. 122+45 RT.	0.02A±		ALL R. T. & I. CONST. (T) 0.02A± SLOPE (T) 0.02A± CONST. (T) 0.02A± SLOPE (T) 0.02A±	MO		TOPSHAM			VT ROUTE 25 725 S.F.± 1035 S.F.± STONE WALL 850 S.F.± 825 S.F.± FENCE & STONE WALL	1	7,9	PARCEL NO. 3 SAWLAN. CHANGE TITLE TO CARBONELL, FRED A. & TARA R. PER C.O. 8109.	08-12-91	M. J. R.	F. J. H.
														2	6,10	PARCEL NO. 2 LIMLAW. ADD NEW PARCEL 2D. REMOVE & RESET (T) FOR FENCE FROM STA. REV. 128+40 LT. TO STA. REV. 131+50 LT. BY OPTION ONLY. PER C.O. 8270.	11-02-92	C. C. P.	L. W. B.
														3	8,9	PARCEL NO. 9 PERRY. SELL OFF FROM PARCEL NO. 2 CREATES THIS NEW PARCEL. PERRY, NORMAN D. & LORETTA L. PER C.O. 8358	04-26-93	M. J. R.	L. W. B.
2A	LIMLAW, BRUCE E. & RUTH L.	10,11	REV. 128+10 LT. REV. 128+11 LT. REV. 128+20 LT. REV. 128+31 LT. REV. 128+40 LT. REV. 128+92 LT. REV. 130+75 LT. REV. 131+20 LT. REV. 131+60 LT. REV. 133+53 LT. REV. 134+53 LT. REV. 136+00 LT. REV. 128+55 LT.± REV. 135+13 LT.± REV. 135+30 LT.±	REV. 130+55 LT. REV. 130+02 LT. REV. 131+60 LT. REV. 128+45 LT. REV. 129+40 LT. REV. 131+15 LT. REV. 134+55 LT. REV. 129+35 RT.± REV. 135+80 LT.±			CONST. (T) 0.05A± EASE. (T) 0.18A± CHANNEL (P) 0.01A± SLOPE (P) 0.01A± CUL. DIT. & DR. (P) SLOPE (T) 0.01A± DRAINAGE (P) EXCEPT & RESERVE  EXCEPT & RESERVE	MO		TOPSHAM			2100 S.F.± TEMPORARY BRIDGE DETOUR FENCE - BARB WIRE 55 S.F.± 245 S.F.± 95 S.F.± FENCE - SPLIT RAIL DRIVE 16' GRAVEL MP 0253 DRIVE 40' GRAVEL MP 0256 DRIVE 40' GRAVEL MP 0258 LIVESTOCK CROSSING 16' PAVED AREA FOR FUELING OF EQUIPMENT STREET LIGHT-PERSONAL PROP. ON POLE #117	4	6,10	PARCEL NO. 2 LIMLAW. REVISE DESIGN AND RIGHTS ACCORDING TO PLANS. PER C.O. 8359	04-26-93	M. J. R.	L. W. B.
														5	7,9	PARCEL NO. 2 LIMLAW. ADD NEW PARCELS 2E, 2F & 2G. PARCEL NO. 2 BOUGHT ALL OF PARCEL NO. 4. PER C.O. 8360	04-26-93	M. J. R.	L. W. B.
														7,9	10	PARCEL NO. 4 FORMERLY LIMLAW, EDWARD & HAZEL. DELETE THIS PARCEL DUE TO IT'S PURCHASE BY PARCEL NO. 2. PER C.O. 8360  MYLARS TO DESIGN 5-23-94	04-26-93	M. J. R.	L. W. B.
2B		11,12	REV. 139+61 LT. REV. 137+60 LT. REV. 137+80 LT. REV. 137+80 LT. REV. 137+80 LT. 144+00 LT.	144+20 LT. REV. 140+04 LT. 143+85 LT. REV. 140+50 LT.	0.07A±		DRIVE (T) CONST. (T) 0.02A± SLOPE (T) 0.14A± DRIVE (T)						2980 S.F.± 40' GRAVEL MP 0261 1025 S.F.± STONE WALL 14' GRAVEL MP 0273						
2C		9,10 11,12	124+16 CL.	REV. 143+22 CL.	1.94A±		ALL R. T. & I.						VT. ROUTE 25 & T.H. #49						
2D		10	REV. 128+40 LT.	REV. 131+50 LT.			REMOVE & RESET (T)						FENCE - BY OPTION ONLY						

03-3545 1805 78F239  
ACCT. pr op  
/usr/z/for/070070.dlr/78f239d.dgn  
DATE PLOTTED 26-APR-1993  
78f239djl

DR. (P)- DRAINAGE RIGHT  
DIT. (P)- DITCHING RIGHT  
CH. (P)- CHANNEL RT.  
DRIVE (T)- DRIVE RIGHT  
CUL. (P)- CULVERT RIGHT  
W- WATER SOURCES

PRESENT R.O.W.  
TAKING WITHOUT ACCESS  
TAKING WITHOUT ACCESS ALONG PROPERTY LINE  
TAKING WITH ACCESS  
PERMANENT EASEMENT  
TEMPORARY EASEMENT

LEGEND  
... CZ (P) ...  
CONST. (T)  
SR SR  
P  
L  
△ △ △  
○ ○ ○

CLEAR ZONE  
CONSTRUCTION EASEMENT  
SLOPE RIGHTS  
PROPERTY LINE  
TOP OF CUT  
TOE OF SLOPE

REVISED 04-26-93  
APPROVED: LAWRENCE BLISS, L.S. DATE: 11-27-90  
AGENT OF PLANS & TITLES

R. O. W. PLANS  
TOPSHAM  
F BRF 031-1(9)  
SHEET 6 OF 12 2

JUN 19 1997

TABLE OF PROJECT PROPERTY ACQUISITION

STATE OF VERMONT  
AGENCY OF TRANSPORTATION  
RIGHT OF WAY PLANS  
DETAIL SHEET

PARCEL NO.	GRANTOR	SHEET NO.	BEGINNING STATION	ENDING STATION	TAKING	REM.	RIGHTS	TITLE TAKEN	DATE	TOWN OR CITY RECORDED	BK.	PG.	REMARKS	REVISION NO.	SHEET	DESCRIPTION OF REVISION	DATE	MADE BY	APPROVED BY
2E	PARCEL 2 CONTINUED FROM PREVIOUS SHEET LIMLAW, BRUCE. & RUTH L.	9,10	124+16 RT. 124+16 RT. 124+16 RT. 124+16 RT. 124+16 RT. 126+50 RT. REV. 127+75 RT. REV. 128+33 RT. 126+00 RT.	REV. 128+55 RT. 124+26 RT. REV. 125+45 RT. REV. 128+65 RT. REV. 128+35 RT. REV. 127+75 RT. REV. 128+58 RT. REV. 128+55 RT.	0.29A±		EASE. (T) SLOPE (T) 0.02A± CONST. (T) 0.11A±  SLOPE (T) 0.04A± SLOPE (P) 0.03A± CHANNEL (P) 0.01A± DRIVE (T)	WD		TOPSHAM			INSTALL UNDERGROUND POWER 1045 S.F.±  FENCE - BARB WIRE 1475 S.F.± 1170 S.F.± 65 S.F.± 16' GRAVEL MP 0239						
2F		10,11 12	REV. 128+73 CL. REV. 129+00 RT. REV. 129+15 RT. REV. 129+37 RT. REV. 130+00 RT. REV. 129+37 RT. REV. 136+52 RT. REV. 138+00 RT. REV. 139+40 RT.± REV. 140+82 RT. REV. 141+02 RT. REV. 141+07 RT.	REV. 142+84 RT. REV. 142+74 RT. REV. 129+42 RT. REV. 130+00 RT. REV. 132+20 RT. REV. 132+50 RT.  REV. 140+90 RT.± REV. 142+86 RT. REV. 142+85 RT.	1.29A±		CHANNEL (P) 0.01A± SLOPE (P) 0.01A± SLOPE (T) 0.08A± CONST. (T) 0.07A±  CUL. DIT. & DR. (P) EASE. (T) CONST. (T) 0.05A± CUL. DIT. & DR. (P) SLOPE (T) 0.07A±						FENCE 170 S.F.± 615 S.F.± 3560 S.F.± 3220 S.F.± DRIVE 16' GRAVEL MP 0258  INSTALL SILT FENCE 2100 S.F.±  3150 S.F.±						
2G		12	REV. 142+83 RT.	REV. 143+09 RT.	0.01A±		ALL R. T. & I.						T.H. *49 525 S.F.±						
3A	CARBONELL, FRED A. & TARA R.	9	122+45 RT. 122+49 RT. 122+65 RT. 123+42 RT. 122+45 RT.	124+16 RT. 124+16 RT.  124+16 RT. 124+16 RT.	0.08A±	0.59A±	DRIVE (T) SLOPE (T) 0.01A± EASE. (T)	WD	05-28-94	TOPSHAM	52	281-292	3380 S.F.± 14' GRAVEL MP 0232 300 S.F.± INSTALL UNDERGROUND POWER						
3B		9	122+45 CL.	124+16 CL.	0.10A±		ALL R. T. & I.						VT ROUTE 25						
4	DELETED												FORMERLY LIMLAW, EDWARD E. & HAZEL L. NOW PART OF PARCEL NO. 2						

JUN 19 1997

0311009 200 1805 78F239

ACCT.prp  
/prop/78f239/rf239d.dgn  
DATE PLOTTED 31-JAN-1994  
78F239DZ.I

DR. (P)- DRAINAGE RIGHT  
DIT. (P)- DITCHING RIGHT  
CH. (P)- CHANNEL RT.  
DRIVE (T)- DRIVE RIGHT  
CUL. (P)- CULVERT RIGHT  
[W]- WATER SOURCES

PRESENT R.O.W.  
TAKING WITHOUT ACCESS  
TAKING WITHOUT ACCESS ALONG PROPERTY LINE  
TAKING WITH ACCESS  
PERMANENT EASEMENT  
TEMPORARY EASEMENT

LEGEND . . . C.Z. (P) . . . . . CLEAR ZONE  
--- CONST. (T) --- CONSTRUCTION EASEMENT  
--- SR --- SLOPE RIGHTS  
--- P --- PROPERTY LINE  
--- L --- TOP OF CUT  
--- O --- TOE OF SLOPE

REVISED 04-26-93

APPROVED: LAWRENCE BLISS, L.S. DATE: 11-27-90  
AGENT D. PLANS & TITLES

R. O. W. PLANS  
TOPSHAM  
F BR 031-1(9)  
SHEET 7 OF 12

**STATE OF VERMONT  
AGENCY OF TRANSPORTATION  
TABLE OF PROJECT PROPERTY ACQUISITION  
RIGHT OF WAY PLANS  
DETAIL SHEET**

PARCEL NO.	GRANTOR	SHEET NO.	BEGINNING STATION	ENDING STATION	TAKING	REM.	RIGHTS	TITLE TAKEN	DATE	TOWN OR CITY RECORDED	BK.	PG.	REMARKS	REVISION NO.	SHEET	DESCRIPTION OF REVISION	DATE	MADE BY	APPROVED BY
5	KUNSA, THEODORE P. JR.	12	REV. 143+07 LT.	REV. 143+34 RT.	0.03A±		ALL R. T. & I.	WD	02-16-94	TOPSHAM	52	106	TH 49 & VT RTE. 25 1150 S.F.±						
6A	TOWN OF TOPSHAM	12	REV. 142+83 RT. REV. 143+07 RT.	REV. 143+34 RT.	0.02A±		APPROACH (T)	QCDOE	12-30-93	TOPSHAM	52	204- 205	1050 S.F.± TH 49						
6B		12	REV. 142+83 LT.	REV. 143+33 RT.	0.03A±		ALL R. T. & I.						VT ROUTE 25 1250 S.F.±						
7	WASHINGTON ELECTRIC CO-OP INC.												UTILITY						
8	TOPSHAM TELEPHONE COMPANY INC.												UTILITY						
9A	PERRY, NORMAN D. & LORETTA L.	9,10	122+15 LT. 122+35 LT. 122+73 LT. 123+68 LT. 124+00 LT. 125+18 LT. 126+92 LT. 127+08 LT. 127+16 LT. REV. 127+81 LT.	127+43 LT. 127+63 LT. 125+75 LT.	0.16A±		CONST. (T) 0.07A± SLOPE (T) 0.02A± CUL., DIT. & DR. (P) CUL., DIT. & DR. (P) EASE. (T) 0.18A± DRIVE (T) SLOPE (P) 0.02A± CHANNEL (P) 0.01A±	WD		TOPSHAM			DRIVE 14' GRAVEL MP 0232 3265 S.F.± 700 S.F.±  TEMPORARY BRIDGE DETOUR 16' GRAVEL M.P. 0241 840 S.F.± 18' S.F.±						
9B		9,10	122+15 CL	REV. 128+25 LT.	0.35A±		ALL R.T. & I.						VT. RTE. 25						
	MAINT. AGREE. AREA #1	12	REV. 143+07 RT.	REV. 143+08 RT.									LENGTH 24' TH 49						

JUN 19 1997

03-3545 1805 78F239  
ACCT.prp  
/usr/zfd/070070.dlr/78f239a.dgn  
DATE PLOTTED 26-APR-1993  
78f239d3.1

DR. (P)- DRAINAGE RIGHT  
DIT. (P)- DITCHING RIGHT  
CH. (P)- CHANNEL RT.  
DRIVE (T)- DRIVE RIGHT  
CUL. (P)- CULVERT RIGHT  
W- WATER SOURCES

PRESENT R.O.W.  
TAKING WITHOUT ACCESS  
TAKING WITHOUT ACCESS ALONG PROPERTY LINE  
TAKING WITH ACCESS  
PERMANENT EASEMENT  
TEMPORARY EASEMENT

LEGEND . . . CZ (P) . . . . . CLEAR ZONE  
CONST. (T) . . . . . CONSTRUCTION EASEMENT  
SR SR . . . . . SLOPE RIGHTS  
L . . . . . PROPERTY LINE  
TOP OF CUT  
TOE OF SLOPE

REVISED 04-26-93  
APPROVED: LAWRENCE BLISS, L.S. DATE: 11-27-90  
AGENT D. PLANS & TITLES

R. O. W. PLANS  
TOPSHAM  
F BR 031-1(9)  
SHEET 8 OF 12



**BARB WIRE FENCE - FOUR STRAND**  
 126+00 RT ~ REV 128+55 RT  
 REV 129+40 RT ~ REV 132+00 RT  
 REV 128+22 LT ~ REV 130+07 LT (200 FT)  
 REV 130+25 LT ~ REV 131+15 LT (39 FT)

**REMOVAL OF EXISTING FENCE**  
 126+00 RT ~ REV 128+35 RT  
 REV 129+00 E ~ REV 129+43 RT (Far RT-103 FT)  
 REV 128+22 LT ~ REV 130+07 RT (200 FT)  
 REV 130+25 LT ~ REV 131+15 LT (39 FT)

**Geotextile Fabric for Silt Fence**  
 LT RT  
 Surv. 126+00 ~ Rev. 128+25 E (290') Surv. 126+25 ~ Rev. 128+25 E (320')  
 Rev. 128+63 E ~ Rev. 130+50 (365') Rev. 128+63 E ~ Rev. 131+00 (274')

**TREATED TIMBER CURB**  
 REV 128+87 LT ~ REV 130+50 LT

**Remove & Reset Fence (Wood Plank)**  
 Rev. 128+40 LT ~ Rev. 131+50 LT (310')

**CONSTRUCT DRIVE**  
 LT RT  
 127+08 (16'-GRAVEL) 126+00 (16'-GRAVEL)

**SAND BORROW**  
 126+00 ~ REV 127+95  
 REV 129+21 ~ REV 132+00

**REMOVAL AND DISPOSAL OF GUARDRAIL**  
 LT RT  
 127+24 ~ REV 128+02 127+03 ~ REV 128+11  
 REV 128+43 ~ REV 129+41 REV 128+55 ~ REV 129+42

**GUARD RAIL APPROACH SECTION - TYPE 1**  
 LT RT  
 127+40 ~ REV 127+96 REV 127+77 ~ REV 128+27  
 REV 128+87 ~ REV 129+37 REV 129+43 ~ REV 127+93

**STEEL BEAM GUARD RAIL**  
 LT RT  
 REV 129+37 ~ REV 130+50 126+50 ~ REV 127+77  
 REV 129+93 ~ REV 130+31

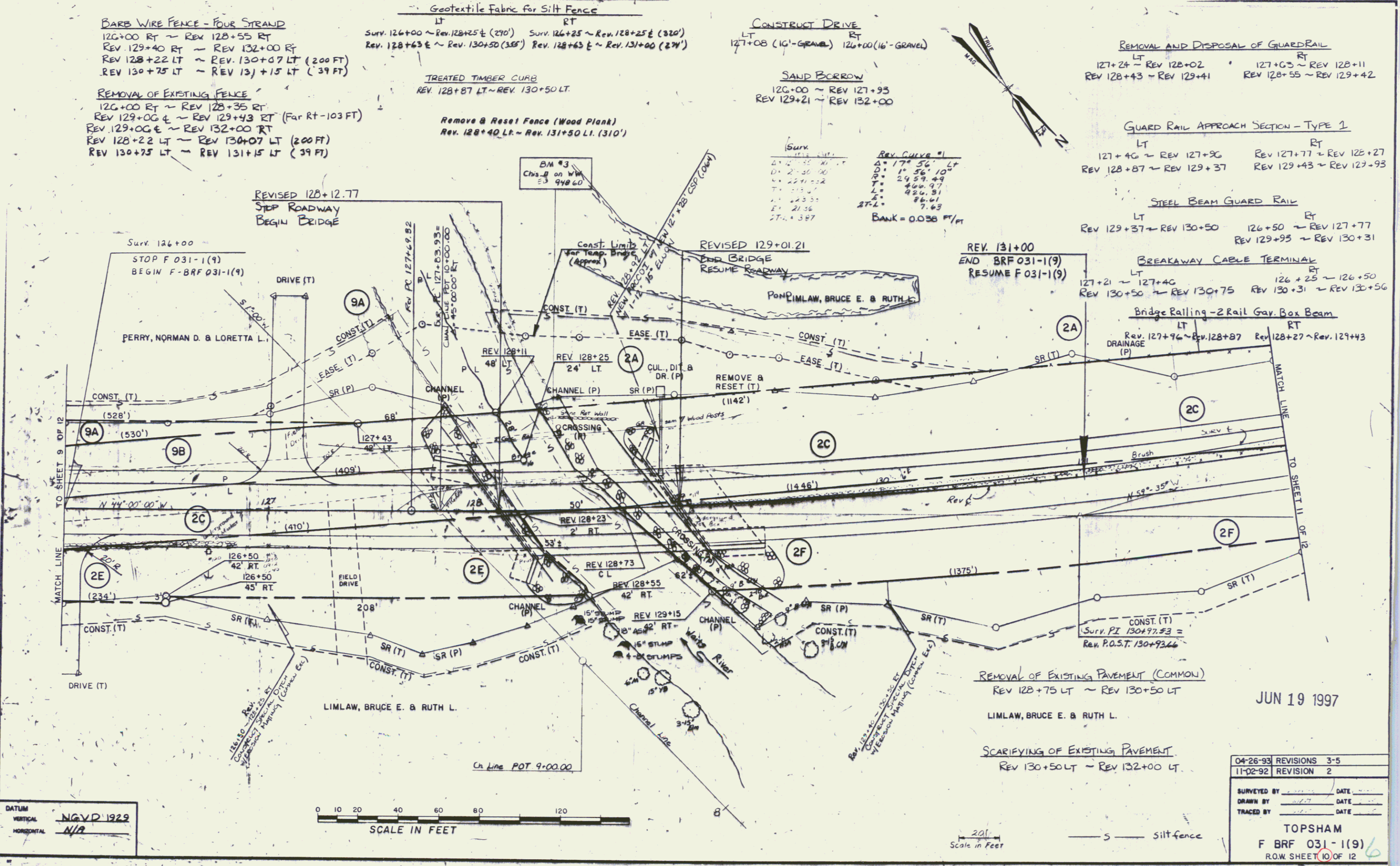
**BREAKAWAY CABLE TERMINAL**  
 LT RT  
 127+21 ~ 127+40 126+25 ~ 126+50  
 REV 130+50 ~ REV 130+75 REV 130+31 ~ REV 130+56

**Bridge Railing - 2 Rail Galv. Box Beam**  
 LT RT  
 Rev. 127+96 ~ Rev. 128+87 Rev. 128+27 ~ Rev. 129+43

Surv. 127+00  
 Δ = 17° 56' 10" LT  
 D = 251.50  
 T = 242.49  
 L = 226.91  
 E = 21.56  
 ST.L = 3.97

REV CURVE #1  
 Δ = 17° 56' 10" LT  
 D = 251.50  
 T = 242.49  
 L = 226.91  
 E = 21.56  
 ST.L = 3.97

BANK = 0.038 FT/FT



**REMOVAL OF EXISTING PAVEMENT (COMMON)**  
 REV 128+75 LT ~ REV 130+50 LT

**SCARIFYING OF EXISTING PAVEMENT**  
 REV 130+50 LT ~ REV 132+00 LT

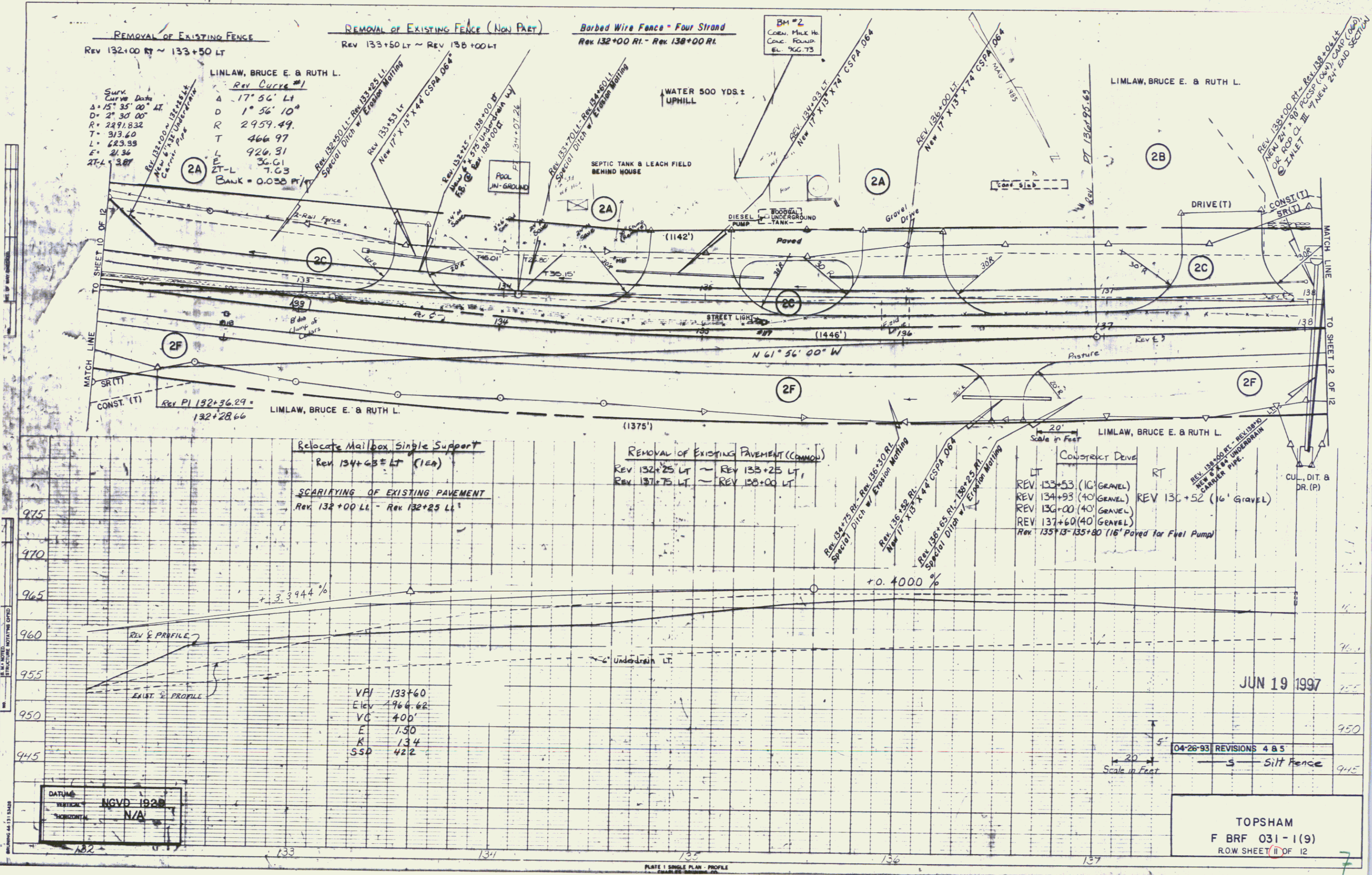
JUN 19 1997

DATUM  
 VERTICAL NGVD 1929  
 HORIZONTAL N/A

0 10 20 40 60 80 100 120  
 SCALE IN FEET

20' Scale in Feet  
 Silt fence

04-26-93	REVISIONS	3-5
11-02-92	REVISION	2
SURVEYED BY	DATE	
DRAWN BY	DATE	
TRACED BY	DATE	
TOPSHAM		
F BRF 031-1(9)		
R.O.W. SHEET 10 OF 12		



REMOVAL OF EXISTING FENCE  
Rev 132+00 RT ~ 133+50 LT

REMOVAL OF EXISTING FENCE (NON PAET)  
Rev 133+50 LT ~ Rev 136+00 LT

Barbed Wire Fence - Four Strand  
Rev 132+00 RT - Rev 138+00 RT

SURV  
Curve Data  
Δ = 15° 35' 00" LT  
D = 2° 30' 00"  
R = 2491.832  
T = 313.60  
L = 623.99  
E = 21.36  
XT-L = 3.87

LINLAW, BRUCE E. & RUTH L.  
Rev Curve #1  
A = 17° 56' LT  
D = 1° 56' 10"  
R = 2959.49  
T = 466.97  
L = 926.31  
E = 36.61  
XT-L = 7.63  
BANK = 0.033 FT/FT

Rev 132+50 LT - Rev 133+25 LT  
Special Ditch w/ Erosion Matting  
New 17" X 13" X 4' CSPPA 106"

Rev 133+25 LT - Rev 134+00 LT  
Special Ditch w/ Erosion Matting  
New 17" X 13" X 4' CSPPA 106"

BM #2  
CORN. PILE NO.  
CONG. FOUND  
EL. 966.73

Rev 134+00 LT - Rev 134+93 LT  
New 17" X 13" X 4' CSPPA 106"

Rev 134+93 LT - Rev 135+53 LT  
New 17" X 13" X 4' CSPPA 106"

Rev 135+53 LT - Rev 136+00 LT  
New 17" X 13" X 4' CSPPA 106"

Rev 136+00 LT - Rev 137+00 LT  
New 17" X 13" X 4' CSPPA 106"

Rev 137+00 LT - Rev 138+00 LT  
New 17" X 13" X 4' CSPPA 106"

Rev PI 132+36.29 = 132+28.66

Relocate Mailbox Single Support  
Rev 134+63 ± LT (1Ea)

SCARIFYING OF EXISTING PAVEMENT  
Rev 132+00 LT - Rev 132+25 LT

REMOVAL OF EXISTING PAVEMENT (COMMON)  
Rev 132+25 LT ~ Rev 133+25 LT,  
Rev 137+75 LT ~ Rev 138+00 LT

CONSTRUCT DRIVE  
REV 133+53 (16' GRAVEL)  
REV 134+93 (40' GRAVEL)  
REV 136+00 (40' GRAVEL)  
REV 137+60 (40' GRAVEL)  
Rev 135+13-135+80 (16' Paved for Fuel Pump)

975  
970  
965  
960  
955  
950  
945

REV. & PROFILE  
EXIST. & PROFILE

VPI 133+60  
Elev 966.62  
VC 400'  
E 1.30  
K 134  
SSD 422

+0.4000%

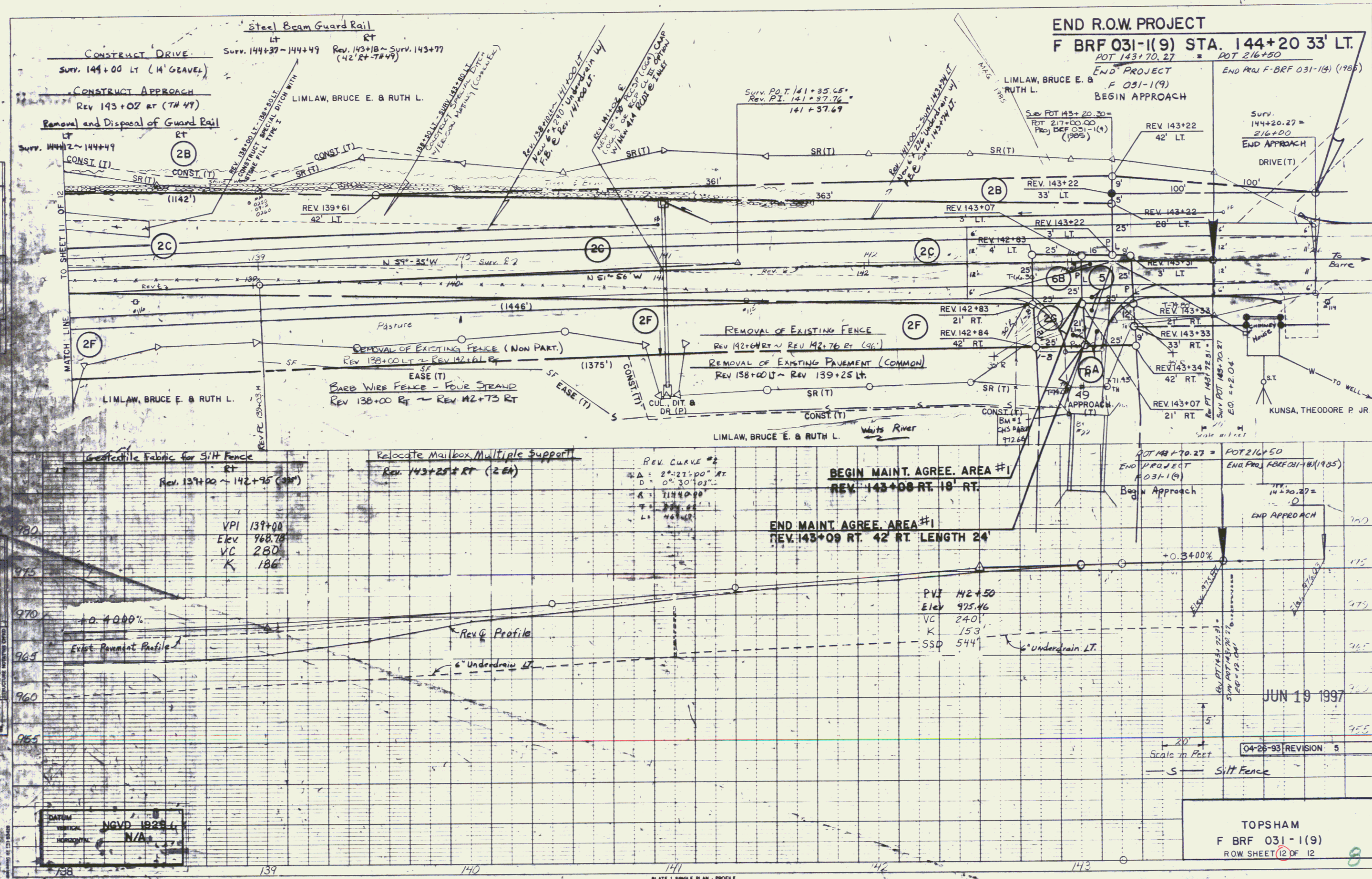
JUN 19 1997

04-28-93 REVISIONS 4 & 5  
S Silt Fence

DATUM  
VERTICAL NGVD 1929  
HORIZONTAL N/A

TOPSHAM  
F BR 031-1(9)  
ROW SHEET 11 OF 12

PLATE 1 SINGLE PLAN - PROFILE  
SCALE: HORIZONTAL 1" = 40'



END R.O.W. PROJECT  
 F BR 031-1(9) STA. 144+20 33' LT.

POT 143+70.27 = POT 216+50  
 END PROJECT F 031-1(9)  
 BEGIN APPROACH

CONSTRUCT DRIVE  
 SURV. 144+00 LT (14' GRAVEL)

CONSTRUCT APPROACH  
 REV 143+02 RT (TH 49)

REMOVAL AND DISPOSAL OF GUARD RAIL  
 SURV. 144+2~144+49

Steel Beam Guard Rail  
 LT SURV. 144+37~144+49  
 RT SURV. 143+18~143+77  
 (42' RT~78'49')

LIMLAW, BRUCE E. & RUTH L.

SURV. P.O.T. 141+35.65  
 REV. P.I. 141+37.76  
 141+37.69

LIMLAW, BRUCE E. & RUTH L.

SURV. 144+20.27 = 216+00  
 END APPROACH DRIVE (T)

CONST. (T)  
 (1142')

(2B)

(2C)

(2G)

(2C)

(2F)

(2F)

(2F)

(2A)

Geotextile Fabric for Silt Fence  
 RT SURV. 137+00 ~ 142+95 (30')

Relocate Mailbox Multiple Support  
 REV. 143+25 RT (2 EA)

REV. CURVE #2  
 Δ = 2°33'00" RT  
 D = 0°30'03" RT  
 A = 7144.00  
 T = 224.44  
 L = 468.44

BEGIN MAINT. AGREE. AREA #1  
 REV. 143+08 RT 18' RT.

END MAINT. AGREE. AREA #1  
 REV. 143+09 RT 42' RT LENGTH 24'

POT 143+70.27 = POT 216+50  
 END PROJECT F 031-1(9)  
 BEGIN APPROACH

VPI 139+00  
 Elev 968.79  
 VC 280  
 K 186

PVI 142+50  
 Elev 975.46  
 VC 240  
 K 153  
 SSD 544

JUN 19 1997

Scale in Feet  
 04-26-93 REVISION 5

DATUM  
 NETWORK NGVD 1928 L  
 HORIZONTAL N/A

TOPSHAM  
 F BR 031-1(9)  
 ROW SHEET 12 OF 12