

BARB WIRE FENCE - FOUR STRAND
 126+00 RT ~ REV 128+55 RT
 REV 129+40 RT ~ REV 132+00 RT
 REV 128+22 LT ~ REV 130+07 LT (200 FT)
 REV 130+25 LT ~ REV 131+15 LT (39 FT)

REMOVAL OF EXISTING FENCE
 126+00 RT ~ REV 128+35 RT
 REV 129+00 E ~ REV 129+43 RT (Far RT-103 FT)
 REV 128+22 LT ~ REV 130+07 LT (200 FT)
 REV 130+25 LT ~ REV 131+15 LT (39 FT)

Geotextile Fabric for Silt Fence
 LT RT
 Surv. 126+00 ~ Rev. 128+25 E (290') Surv. 126+25 ~ Rev. 128+25 E (320')
 Rev. 128+63 E ~ Rev. 130+50 (365') Rev. 128+63 E ~ Rev. 131+00 (274')

TREATED TIMBER CURB
 REV 128+87 LT ~ REV 130+50 LT

Remove & Reset Fence (Wood Plank)
 Rev. 128+40 LT ~ Rev. 131+50 LT (310')

CONSTRUCT DRIVE
 LT RT
 127+08 (16'-GRAVEL) 126+00 (16'-GRAVEL)

SAND BORROW
 126+00 ~ REV 127+95
 REV 129+21 ~ REV 132+00

REMOVAL AND DISPOSAL OF GUARDRAIL
 LT RT
 127+24 ~ REV 128+02 127+03 ~ REV 128+11
 REV 128+43 ~ REV 129+41 REV 128+55 ~ REV 129+42

GUARD RAIL APPROACH SECTION - TYPE 1
 LT RT
 127+40 ~ REV 127+90 REV 127+77 ~ REV 128+27
 REV 128+87 ~ REV 129+37 REV 129+43 ~ REV 129+93

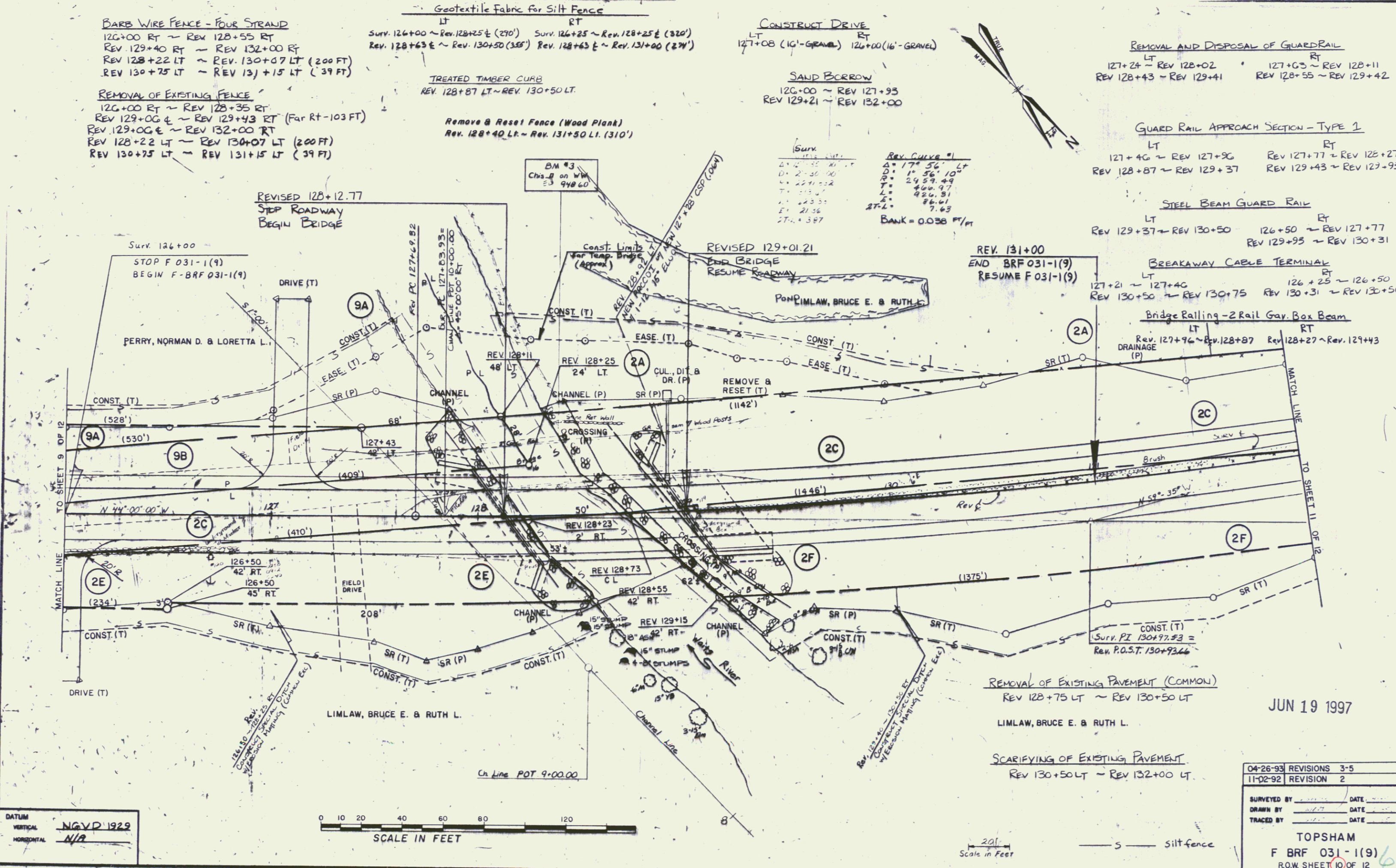
STEEL BEAM GUARD RAIL
 LT RT
 REV 129+37 ~ REV 130+50 126+50 ~ REV 127+77
 REV 129+93 ~ REV 130+31

BREAKAWAY CABLE TERMINAL
 LT RT
 127+21 ~ 127+40 126+25 ~ 126+50
 REV 130+50 ~ REV 130+75 REV 130+31 ~ REV 130+56

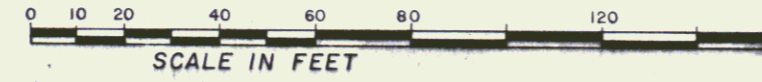
Bridge Railing - 2 Rail Galv. Box Beam
 LT RT
 Rev. 127+96 ~ Rev. 128+87 Rev. 128+27 ~ Rev. 129+43

Surv	REV CURVE #
21-22-30	A=17° 56' 10" LT
D=21-30-00	B=1° 56' 10" LT
M=22-11-52	T=2429.49
T=21-51-57	L=800.97
E=22-3-57	Z=826.91
T=21-56	ST-L=86.61
ST-L=397	ST-R=7.63

BANK = 0.038 FT/FT



DATUM
 VERTICAL NGVD 1929
 HORIZONTAL N/A



20' Scale in Feet
 Silt fence

REMOVAL OF EXISTING PAVEMENT (COMMON)
 REV 128+75 LT ~ REV 130+50 LT

SCARIFYING OF EXISTING PAVEMENT
 REV 130+50 LT ~ REV 132+00 LT

JUN 19 1997

04-26-93	REVISIONS	3-5
11-02-92	REVISION	2
SURVEYED BY	DATE	
DRAWN BY	DATE	
TRACED BY	DATE	
TOPSHAM		
F BRF 031-1(9)		
R.O.W. SHEET 10 OF 12		