

INDEX OF SHEETS

STATE OF VERMONT AGENCY OF TRANSPORTATION



PROPOSED IMPROVEMENT

TOWN OF SHREWSBURY

COUNTY OF RUTLAND

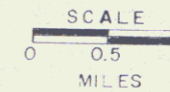
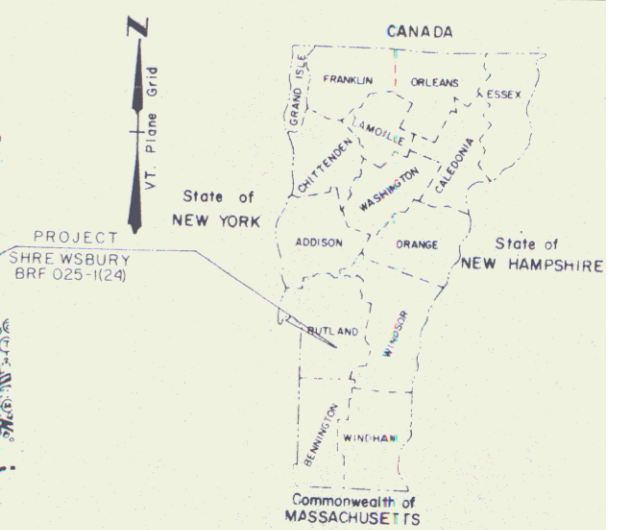
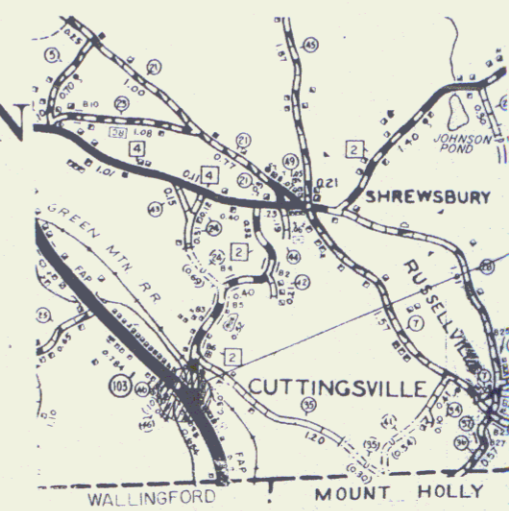
VT. ROUTE 103 (FAP)

BEGINNING AT A POINT 0.568 MILES NORTHERLY OF THE WALLINGFORD-SHREWSBURY TOWN-LINE AND EXTENDING NORTH-WESTERLY FOR 0.047 MILES.

LENGTH OF ROADWAY 108.63 FEET 0.021 MILES
LENGTH OF BRIDGE 141.37 FEET 0.026 MILES
LENGTH OF PROJECT 250.00 FEET 0.047 MILES

WORK TO BE PERFORMED UNDER THIS PROJECT INCLUDES REPLACING BRIDGE NO. 50 AND CONSTRUCTION OF NECESSARY ROADWAY APPROACHES.

LENGTH OF R.O.W. PROJ. 978.92 FT. 0.185 MILES



R.O.W. PLANS

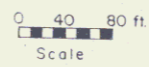
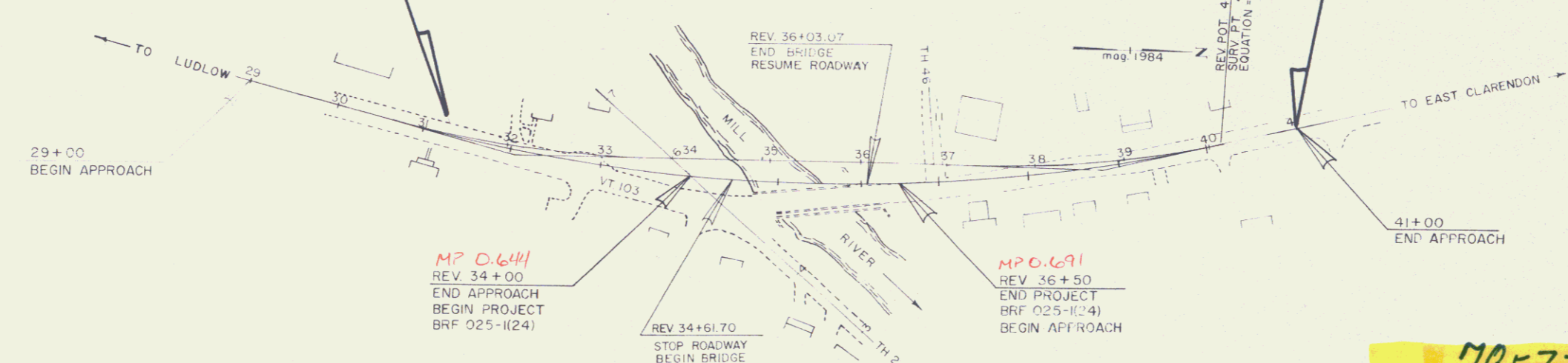
BEGIN R.O.W. PROJECT
BRF 025-1 (24) REV. STA. 31+25 LT.

END R.O.W. PROJECT
BRF 025-1 (24) STA. 41+00 C

CONVENTIONAL SIGNS

COUNTY LINE	---
TOWN LINE	- - - -
LIMITS OF ACCESS	—○—
POINT OF ACCESS	X
FENCE LINE	—•—•—
STONE WALL	—•••••
TRAVELED WAY	—•••••
GUARD RAIL	—•••••
RAILROAD	—+—+—
SURVEY LINE	—•••••
CULVERT	—•••••
POWER POLE	—○—
TELEPHONE POLE	—○—
TREES	—○—
CONTROL OF ACCESS	—•••••
PROPERTY LINE	—•••••
ROW TAKING LINE	—○—
SLOPE RIGHTS	—○—
TOP OF CUT	—○—
TOE OF SLOPE	—○—

DATUM
VERTICAL VGVD 1929
HORIZONTAL N.A.



78FZ37

ALL DRIVES AS INDICATED ON PLANS ARE SUBJECT TO PERMITS PURSUANT TO TITLE 19, SECTION 43, V.S.A.

APPROVED [Signature] and [Signature] DATE 8/14/88
Dir., Dept. of Engineering and Construction

APPROVED [Signature] DATE 7/10/88
Chief, Property Administration

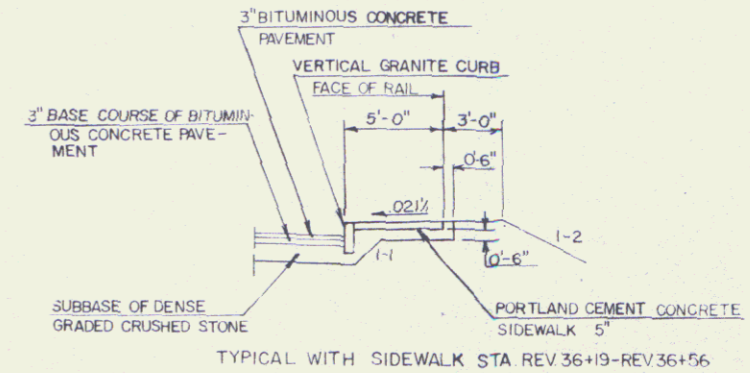
SHREWSBURY
BRF 025-1(24)
SHEET 1 OF 9

THESE PLANS ARE SUBJECT TO SUCH ENGINEERING CHANGES AS MAY BE REQUIRED BY THE FEDERAL HIGHWAY ADMINISTRATION OR THE CHIEF ENGINEER.
CONSTRUCTION IS TO BE CARRIED ON IN ACCORDANCE WITH THESE PLANS AND THE STANDARD SPECIFICATIONS FOR CONSTRUCTION DATED 1986, AS APPROVED BY THE FEDERAL HIGHWAY ADMINISTRATION ON NOVEMBER 21, 1985. REVISIONS AND SUCH REVISED SPECIFICATIONS AND SPECIAL PROVISIONS AS ARE INCORPORATED IN THESE PLANS.

TYPICAL SECTIONS

3" BITUMINOUS CONCRETE PAVEMENT (1 1/4" TYPE III OVER 1 3/4" TYPE II)
 3" BASE COURSE OF BITUMINOUS CONCRETE PAVEMENT (TYPE I, ONE LIFT)
 18" SUBBASE OF DENSE GRADED CRUSHED STONE

THICKNESS 1-1/4" BITUMINOUS CONCRETE PAVEMENT
 3" GRANULAR BORROW OR FILL, } as indicated on the plans or
 6" SAND BORROW } as directed by the Engineer



NOT USED ON PROJ. BRP 025-(24)



MATERIAL ITEM	THICKNESS TOLERANCE
PAVEMENT	± 1/4"
BASE COURSE	± 1/4"
SUBBASE	± 1"
GRANULAR BORROW	± 1"
SAND BORROW	± 1"

SEEDING FORMULA URBAN AREAS

# FT	LBS/A	NAME	PUR %	GERM %
37.50	30	CREeping RED FESCUE (VARIETY PENNLANM)	90	85
31.25	25	KENTUCKY BLUEGRASS (COMMON)	85	75
31.25	25	PERENNIAL RYE GRASS (VAR. PENNFIRE)	95	90
700.00	80			

THE SEED MIXTURE SHALL NOT HAVE A WEED CONTENT EXCEEDING 0.40% BY WEIGHT AND SHALL BE FREE FROM ALL NOXIOUS WEED SEED.

GENERAL NOTES

- SEED - To be applied per Seeding Formula as directed by the Engineer.
- FERTILIZER - Formula 10-20-10 to be used with seed, applied at the rate of 500 lbs /Acre.
- AGRICULTURAL LIMESTONE - To be applied at the rate of 2 tons /Acre or as directed by the Engineer.
- HAY MULCH - To be placed on earth slopes at the rate of 2 tons /Acre.
- TOPSOIL - To be used with seed as indicated on the plans or as directed by the Engineer.
- MARKER POSTS - (Wood or Steel, as specified) - To be placed as directed by the Engineer.
- SLOPE ROUNDING - All cut slopes to be rounded in accordance with Standard Sheet B-5.
- PAY LIMITS OF SAND BORROW WHEN USED IN CONJUNCTION WITH UNDERDRAIN - See Standard Sheet D-2.

TYPICAL SECTIONS FOR VT. RTE. 103

PROJECT SHREWSBURY

NO. BRP 025-(24)

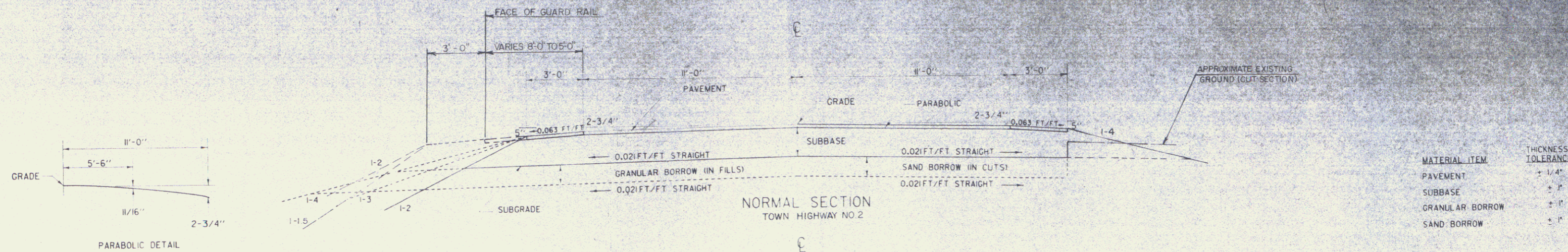
SHEET 2 OF 9 SHEETS

AUG 24 1981

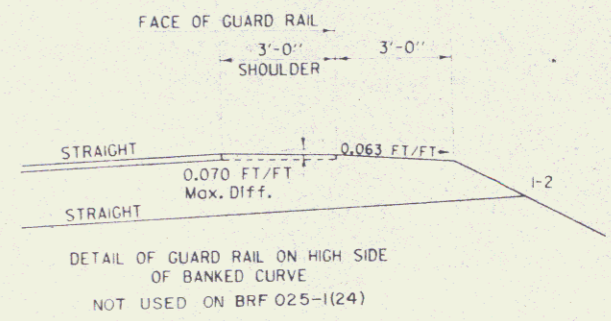
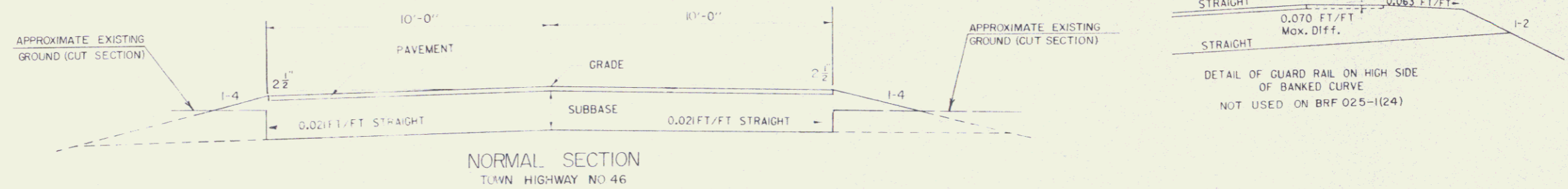
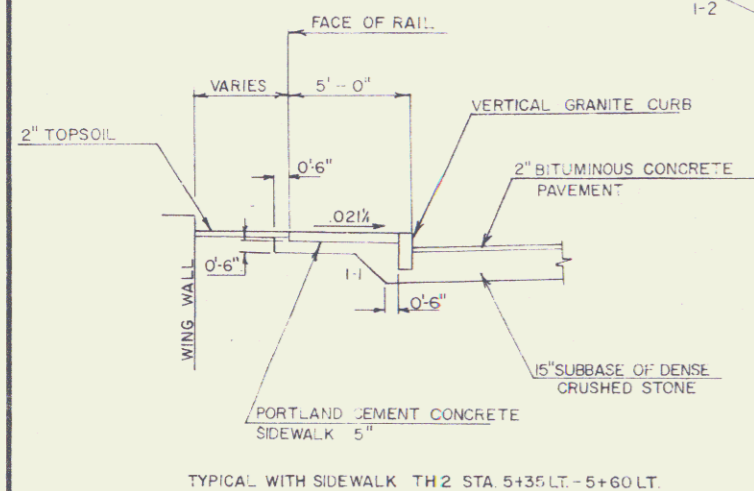
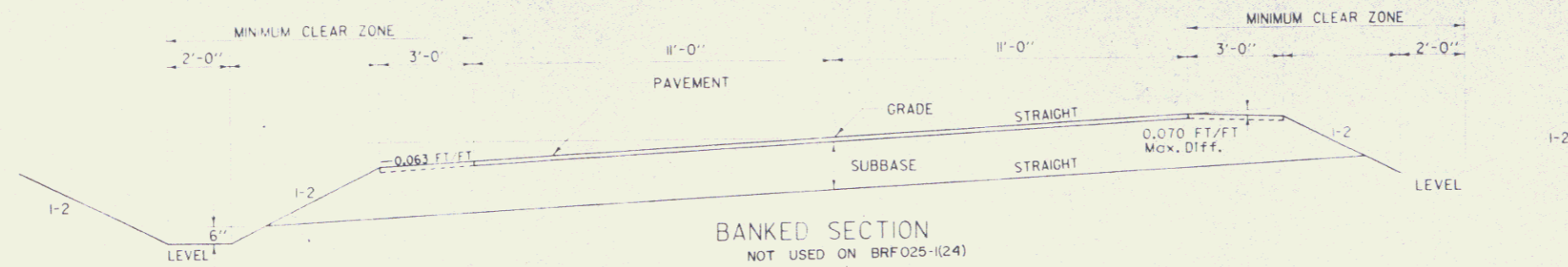
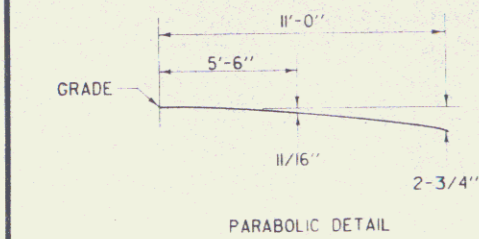
2

TYPICAL SECTIONS

2" BITUMINOUS CONCRETE PAVEMENT
 15" SUBBASE OF DENSE GRADED CRUSHED STONE
 SHOULDERS: 2" BITUMINOUS CONCRETE PAVEMENT (NOT USED TH 46)
 0'-12" GRANULAR BORROW (IN FILLS) } AS INDICATED ON THE PLANS OR AS DIRECTED BY THE ENGINEER.
 0'-24" SAND BORROW (IN CUTS)



MATERIAL ITEM	THICKNESS TOLERANCE
PAVEMENT	± 1/4"
SUBBASE	± 1"
GRANULAR BORROW	± 1"
SAND BORROW	± 1"



TOWN HIGHWAY NO. 2 & NO. 46

SURVEYED BY _____ DATE _____
 DRAWN BY _____ DATE _____
 TRACED BY _____ DATE _____

SHREWSBURY
 BRFO25-1(24)
 R.O.W. SHEET 3 OF 9

**STATE OF VERMONT
AGENCY OF TRANSPORTATION
RIGHT OF WAY PLANS
DETAIL SHEET**

TABLE OF PROJECT PROPERTY ACQUISITION

PARCEL NO.	GRANTOR	SHEET NO.	BEGINNING STATION	ENDING STATION	TAKING	REM.	RIGHTS	TITLE TAKEN	DATE	TOWN OR CITY RECORDED	BK.	PG.	REMARKS	REVISION NO.	SHEET	DESCRIPTION OF REVISION	DATE	MADE BY	APPROVED BY
1A	STEWART, BERNARD J. & JOAN V.	7	REV. 31+25 LT. REV. 32+03 LT. REV. 32+22 LT.	REV. 32+64 LT.	0.01A±		DRIVE (T)	COND	10-06-90	SHREWSBURY	34	148-156	544 S.F.± 12' PAVED MP 0062 WALK	1	4, 5, 7	PARCEL NO. 1, 2, 7. CHANGE WIDTH OF DRIVES TO 12'. PER C.O. 7630.	2-24-89	J. D. P.	J. D. P.
1B		7	REV. 32+07 RT. REV. 32+25 RT.	REV. 32+17 RT.			CONST. EASEL (T) DRIVE (T)	COND	10-06-90	SHREWSBURY	34	148-156	100 S.F.± 16' GRAVEL MP 0062	2	4, 7	PARCEL NO. 3 MCGINNIS. ADD EASEL TO REMOVE AND RESET (T), WOODEN RAIL FENCE AT STA. 33+60 CL. - 34+00 RT. PER C.O. 7663.	4-11-89	A. S. J.	J. D. P.
2	MARTYN, EDNA N.	7	REV. 30+83 RT. REV. 31+28 RT. REV. 31+50 RT.	REV. 32+07 RT. REV. 32+07 RT.			SLOPE (T) CONST. EASEL (T)	COND	10-06-90	SHREWSBURY	34	148-156	DRIVE 12' GRAVEL MP 0060 250 S.F.± 295 S.F.±	3	5, 8	PARCEL NO. 8 RIDLON. CHANGE STA. AND WIDTH OF DRIVE TO 38+73 LT., 24' WIDE. PER C.O. 7753. MYLAR TO DESIGN 9-07-90	8-02-89	J. D. P.	J. D. P.
3	MCGINNIS, JAMES C.	7	REV. 32+63 LT. REV. 33+12 LT. REV. 33+80 LT. REV. 33+60 CL.	REV. 34+76 RT. REV. 34+36 LT. REV. 34+00 RT.	0.13A±		DRIVE (T) CHANNEL (P) REMOVE & RESET (T)	COND	10-06-90	SHREWSBURY	34	148-156	DRIVE 12' GRAVEL MP 0064 1351 S.F.± WOOD RAIL FENCE	4	8	PARCEL NO. 6 CLAYTON & MARTHA STEWART. ADD NOTATION AND DESIGN OF GRASSED AREA TO OUR LAYOUTS. PER C.O. 7972.	9-13-90	C. C. P.	L. W. B.
4	COOK, EDWARD J., JR. & IRENE F.	7	REV. 32+87 RT.				DRIVE (T)	COND	10-06-90	SHREWSBURY	34	148-156	16' GRAVEL MP 0064	5	7	PARCEL NO. 4 COOK. PARCEL NO. 5 MCCULLOUGH PAVE DRIVES AT STA. REV. 32+87 RT. & STA. REV. 34+18 RT. TO LIMITS OF CONSTRUCTION. PER C.O. 7991. <i>MYLAR TO DESIGN 11-08-90</i>	11-08-90	M. J. R.	L. W. B.
5	MCCULLOUGH, JAMES W.	7	REV. 34+18 RT. T.H.2 5+62 RT.	T.H.2 5+80 RT.			DRIVE (T)	AGREE	05-26-89				16' GRAVEL MP 0066 LILAC HEDGE						

23-6834 1805 78F237

ACCT. RYAN
ZPRT010178F237D.DGN
PRF: 78F237D5.PRF
DATE PLOTTED 8-NOV-1990

DR. (T)- DRAINAGE RIGHT
DIT. (T)- DITCHING RIGHT
CH. (T)- CHANNEL RT.
DRIVE (T)- DRIVE RIGHT
CUL. (T)- CULVERT RIGHT
[W]- WATER SOURCES

PRESENT R.O.W.
TAKING WITHOUT ACCESS
TAKING WITHOUT ACCESS ALONG PROPERTY LINE
TAKING WITH ACCESS
PERMANENT EASEMENT
TEMPORARY EASEMENT

LEGEND

--- CONST. (T) ---
SR SR
P SR
L SR
△ L △ L △ L
○ ○ ○

CONSTRUCTION EASEMENT
SLOPE RIGHTS
PROPERTY LINE
TOP OF CUT
TOE OF SLOPE

R. O. W. PLANS

SHREWSBURY
BRF 025-1 (24)
SHEET 4 OF 9

APPROVED: LAWRENCE BLISS, L.S. DATE: 8-12-88
AGENT D, PLANS & TITLES

**STATE OF VERMONT
AGENCY OF TRANSPORTATION
RIGHT OF WAY PLANS
DETAIL SHEET**

PARCEL NO.	GRANTOR	SHEET NO.	BEGINNING STATION	ENDING STATION	TAKING	REM.	RIGHTS	TITLE TAKEN	DATE	TOWN OR CITY RECORDED	BK.	PG.	REMARKS	REVISION NO.	SHEET	DESCRIPTION OF REVISION	DATE	MADE BY	APPROVED BY	
6A	STEWART, CLAYTON J., JR. & MARTHA J.	7, 8	REV. 35+24 LT. REV. 34+58 LT. REV. 35+40 LT. REV. 35+40 LT. REV. 36+42 LT. REV. 36+59 LT.	REV. 36+65 LT. REV. 35+87 LT. REV. 36+27 LT. REV. 36+47 LT. REV. 36+64 LT.	0.05A±		CHANNEL (P) 0.07A± DRAINAGE (P) CUL. RT. (P) EASE. TO CONSTRUCT (T) 0.02A± SLOPE (T) 18 S.F.±	WDOE		SHREWSBURY			2302 S.F.± 3089 S.F.± 1275 S.F.± PAVED PARKING LOT							
6B		7, 8	REV. 36+04 RT. REV. 36+43 RT. REV. 36+80 RT. REV. 37+89 RT. REV. 38+54 RT.	REV. 36+50 RT. REV. 37+31 RT.			CHANNEL (P) 0.02A± EASE. (T) 0.03A± DRIVE (T) DRIVE (T) DRIVE (T)						969 S.F.± DETOUR 1989 S.F.± 40' PAVED MP 0071 40' PAVED MP 0073 24' PAVED MP 0074							
6C		8	REV. 37+15 LT. REV. 37+14 LT. REV. 37+14 LT. REV. 37+80 LT.	REV. 37+99 LT. REV. 38+01 LT. REV. 37+23 LT.	0.01A±		CONST. EASE. (T) 0.01A± SLOPE (T) 40 S.F.±						454 S.F.± 716 S.F.± DRIVE 35' PAVED MP 0073							
7	RICHARDS, MILES S.	7	T.H.2 6+17 RT. T.H.2 6+32 RT.	T.H.2 6+20± LT.			DRIVE (T) ALL R.T. & I.	AGREE.	05-12-89				12' GRAVEL CELLAR DRAIN							
8	RIDLON, ALAN G. & ANN P.	8	REV. 37+98 LT. REV. 37+99 LT. REV. 38+37 LT. REV. 38+73 LT.	REV. 39+15 LT. REV. 39+15 LT. REV. 38+47 LT.	0.01A±		CONST. EASE. (T) 0.02A± CUL. RT. (P) DRIVE (T)	WDOE		SHREWSBURY			230 S.F.± 895 S.F.± 24' PAVED MP 0075							

ACCT. RYAN
ZFAZL(70,0178F237D.DGN)
PRF: 78F237D52.PRF
DATE PLOTTED 3-AUG-1989

DR. RT.- DRAINAGE RIGHT
DIT. RT.- DITCHING RIGHT
CH. RT.- CHANNEL RT.
DRIVE RT.- DRIVE RIGHT
CUL. RT.- CULVERT RIGHT
(D)- DEMOLITION OR REMOVAL
(W)- WATER SOURCES

PRESENT R.O.W.
TAKING WITHOUT ACCESS
TAKING WITHOUT ACCESS ALONG PROPERTY LINE
TAKING WITH ACCESS
PERMANENT EASEMENT
TEMPORARY EASEMENT

LEGEND
--- CONST. EASE --- CONSTRUCTION EASEMENT
SR SR SLOPE RIGHTS
P SR PROPERTY LINE
L L TOP OF CUT
O O TOE OF SLOPE

APPROVED: LAWRENCE BLISS, L.S. DATE: 8-12-88
AGENT D. PLANS & TITLES

R. O. W. PLANS
SHREWSBURY
BRF 025-1(24)
SHEET 5 OF 9

AUG 24 1989

TABLE OF PROJECT PROPERTY ACQUISITION

STATE OF VERMONT
AGENCY OF TRANSPORTATION
RIGHT OF WAY PLANS
DETAIL SHEET

PARCEL NO.	GRANTOR	SHEET NO.	BEGINNING STATION	ENDING STATION	TAKING	REM.	RIGHTS	TITLE TAKEN	DATE	TOWN OR CITY RECORDED	BK.	PG.	REMARKS	REVISION NO.	SHEET	DESCRIPTION OF REVISION	DATE	MADE BY	APPROVED BY	
9	EATON, PHYLLIS E. PARRISH, LYNN E. & DONALD A.	8	REV. 40+04 RT. 40+14 RT. 40+71± RT.	REV. 40+13 RT. 40+89± LT.			CONST. EASE. (T) DRIVE (T) ALL R.T. & I.	WDOE	08-26-89	SHREWSBURY	33	6	12' PAVED MP 0076 ABANDONED WATERLINE							
10	FERGUSON, ERNEST T. & RUTH H.	8	REV. 39+62 LT. 40+54 LT. 40+82 LT.	40+82 LT.			CULVERT (P) DRAINAGE (P)	WDOE	08-21-89	SHREWSBURY	32	614	DRIVE 20' GRAVEL MP 0076							
11A	TOWN OF SHREWSBURY	7,9	REV. 34+95 RT.				CONSTRUCT. APPR. (T)	AGREE					T.H. 2							
11B		8	REV. 36+93 LT.				CONSTRUCT APPR. (T)						T.H. 46							
12	CENTRAL VERMONT PUBLIC SERVICE CORP.												UTILITY							
13	CONTINENTAL TELEPHONE COMPANY												UTILITY							
14	PRUDENTIAL COMMITTEE CUTTINGSVILLE FIRE DISTRICT #1												UTILITY							

AUG 24 1989

<p>DR. RT.- DRAINAGE RIGHT DIT. RT.- DITCHING RIGHT CH. RT.- CHANNEL RT. DRIVE RT.- DRIVE RIGHT CUL. RT.- CULVERT RIGHT ⓧ- DEMOLITION OR REMOVAL ☒- WATER SOURCES</p>	<p>PRESENT R.O.W. TAKING WITHOUT ACCESS TAKING WITHOUT ACCESS ALONG PROPERTY LINE TAKING WITH ACCESS PERMANENT EASEMENT TEMPORARY EASEMENT</p>	<p>LEGEND</p> <p>--- CONST. EASE. --- CONSTRUCTION EASEMENT SR SR SLOPE RIGHTS P PROPERTY LINE L TOP OF CUT △ TOE OF SLOPE</p>	<p>R. O. W. PLANS</p> <p>SHREWSBURY BRF 025-1(24) SHEET 6 OF 9</p>
---	--	--	--

PROP. ADMIN. 5-87

APPROVED: *[Signature]* DATE: 8-2-89
AGENT D. PLANS & TITLES

CONSTRUCT DRIVE
 29+70 LT. (match exist.)
 Rev. 30+25 RT. (12' wide)
 Rev. 32+03 LT. (12' wide) (Paved)
 Rev. 32+87 RT. (16' wide) (Pave to Const Limit)
 Rev. 34+18 RT. (16' wide) (Pave to Const Limit)
 TH 2 6+17 RT. (12' wide)
 TH 2 6+66 RT. (18' wide)
 Rev. 32+25 RT. (16' wide)
 Rev. 33+12 LT. (12' wide)

ALUMINUM APPROACH RAILING
 REV. 34+15 LT. ~ REV. 34+42 LT.
 TH 2 5+43 LT. ~ TH 2 5+68 LT.

PORTLAND CEMENT CONCRETE SIDEWALK 5"
 TH 2 5+35 LT. ~ TH 2 5+60 LT.

TRANSPLANTING TREES
 TH 2 5+54 RT. (4" MAPLE) ✓
 (LOCATION TO BE DETERMINED BY PROPERTY OWNER AND ENGINEER)

STEEL BEAM GUARD RAIL
 REV. 33+77 LT. ~ REV. 34+15 LT.
 TH 2 5+68 LT. ~ TH 2 6+66 LT.

VERTICAL GRANITE CURB
 TH 2 5+35 LT. ~ TH 2 5+60 LT.

CONSTRUCT SIDEWALK RAMP TYPE I
 TH 2 5+60 LT.

TRANSPLANTING SHRUBS
 TH 2 5+62 RT. - 5+80 RT. (HILACS) ✓
 (LOCATION TO BE DETERMINED BY PROPERTY OWNER AND ENGINEER)

REMOVAL & DISPOSAL OF GUARD RAIL
 REV. 34+16 RT. ~ REV. 34+80 RT.

REMOVING LARGE STUMPS
 TH 2 6+54 RT. (48")
 REV. 34+57 RT. (48")

REMOVING SMALL TREES
 REV. 34+30 RT. (12" MAPLE)

REMOVING SMALL STUMPS
 TH 2 6+10 LT. (18" ELM)

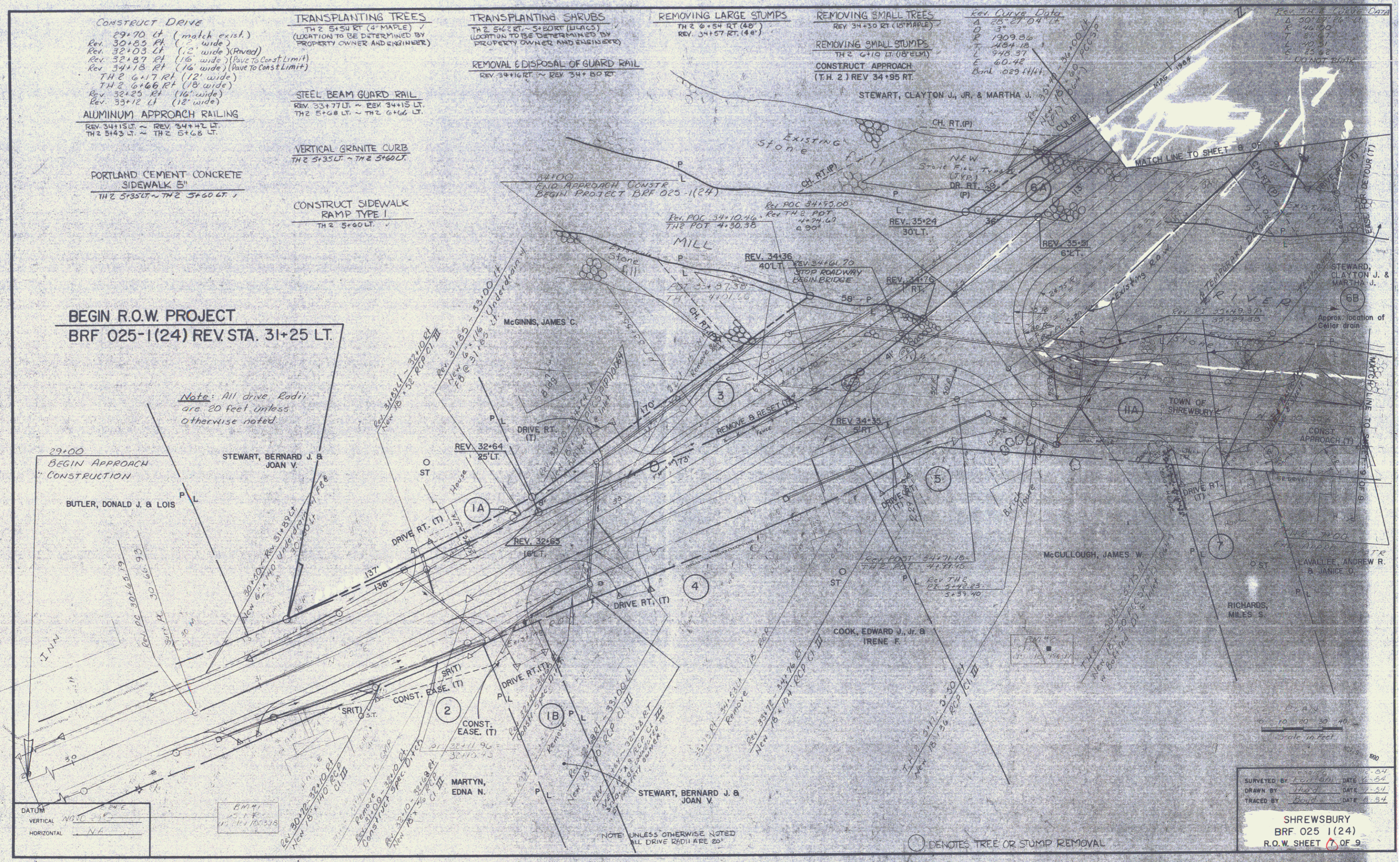
CONSTRUCT APPROACH
 (T.H. 2) REV. 34+95 RT.

Rev. Curve Data
 A 28+27.04 LT.
 D 3'
 P 1309.86
 T 484.18
 L 948.37
 E 60.42
 Bxnl .0291444

Rev. T.H. Curve Data
 A 30+18.26 LT.
 E 46.00
 T 84.47
 L 40.31
 E 23.62
 Bxnl .020216

BEGIN R.O.W. PROJECT
BRF 025-1(24) REV STA. 31+25 LT.

Note: All drive Radii are 20 feet unless otherwise noted.

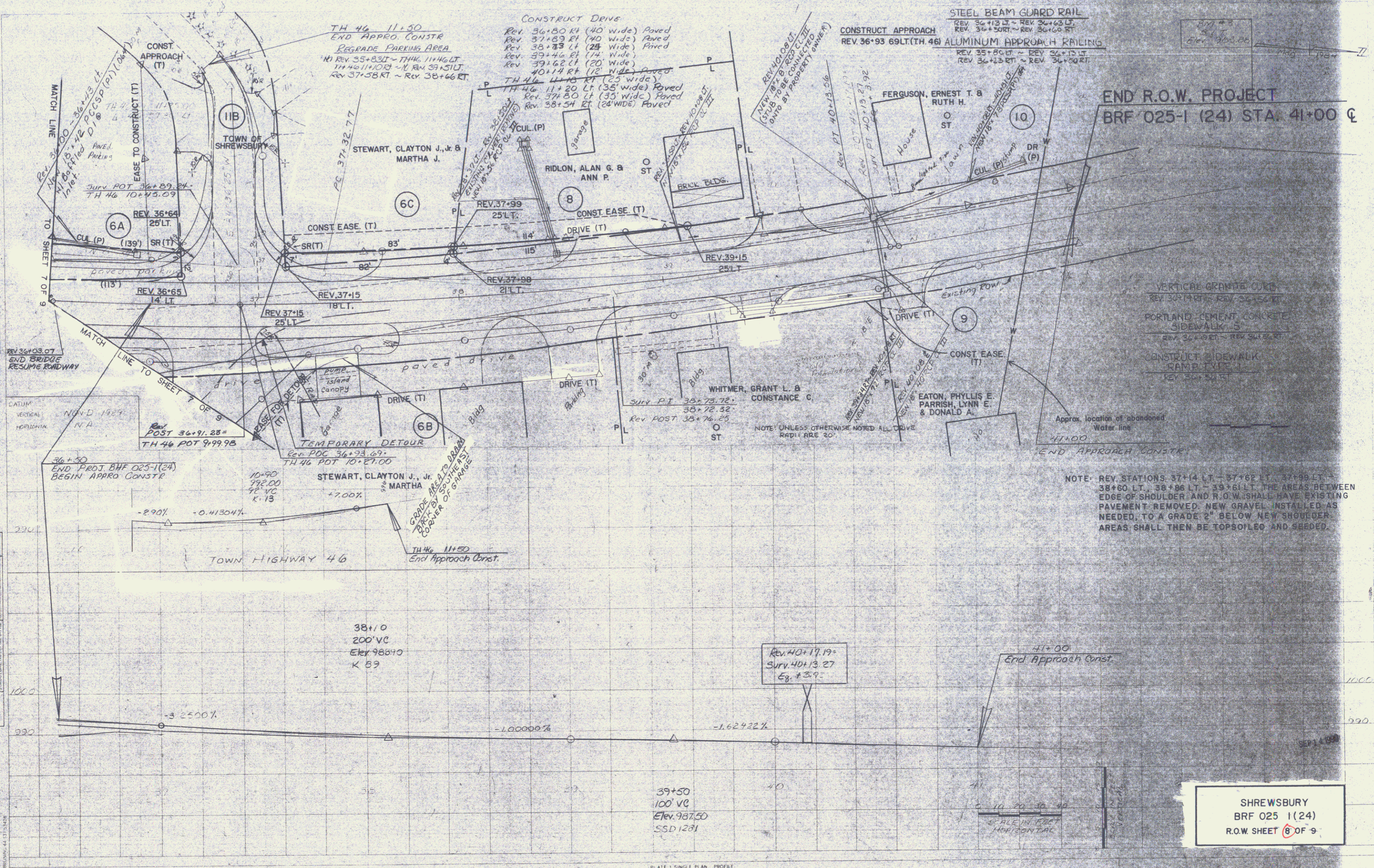


SURVEYED BY: *Field* DATE: 11-54
 DRAWN BY: *Field* DATE: 1-54
 TRACED BY: *Boyd* DATE: 8-54

SHREWSBURY
 BRF 025 1(24)
 R.O.W. SHEET 7 OF 9

DATE	
BY	
CHECKED	
DESIGNED	
APPROVED	
DATE	
BY	
CHECKED	
DESIGNED	
APPROVED	

DATE	
BY	
CHECKED	
DESIGNED	
APPROVED	



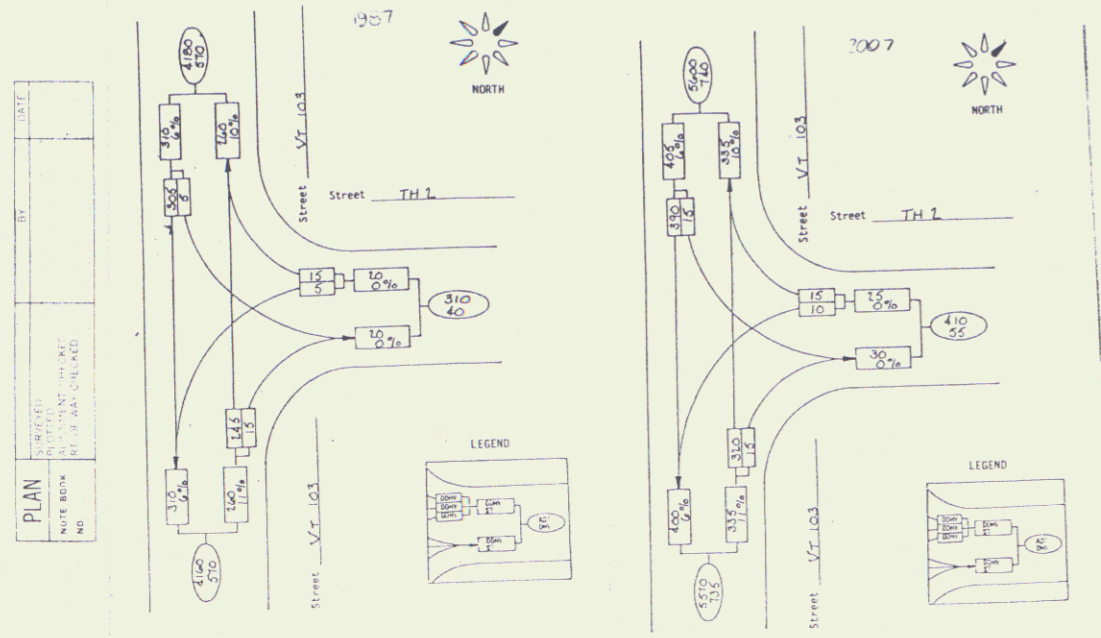
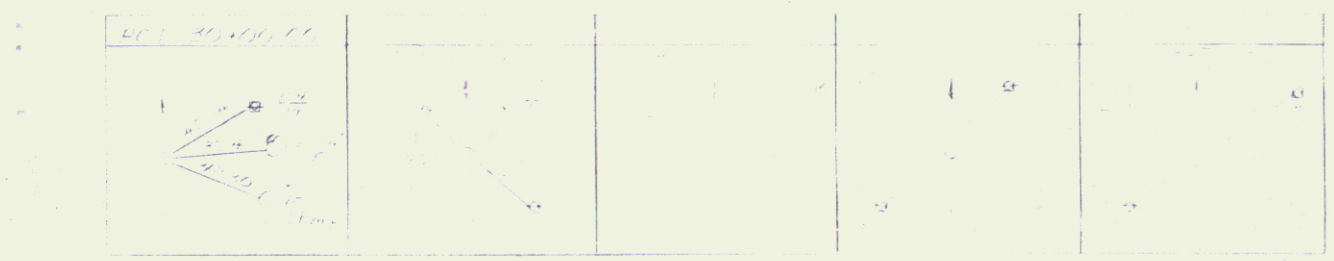
END R.O.W. PROJECT
BRF 025-1 (24) STA. 41+00

- VERTICAL GRANITE CURB
REV. 36+14.87 ~ REV. 36+15.07
- PORTLAND CEMENT CONCRETE
SIDEWALK 5"
REV. 36+15.07 ~ REV. 36+15.27
- CONSTRUCT SIDEWALK
RAMP 1/2" x 4"
REV. 36+15.27

NOTE: REV. STATIONS: 37+14 LT. - 37+62 LT., 37+99 LT. - 38+50 LT., 38+86 LT. - 39+61 LT. THE AREAS BETWEEN EDGE OF SHOULDER AND R.O.W. SHALL HAVE EXISTING PAVEMENT REMOVED. NEW GRAVEL INSTALLED AS NEEDED TO A GRADE 2" BELOW NEW SHOULDER. AREAS SHALL THEN BE TOPSOILED AND SEED.

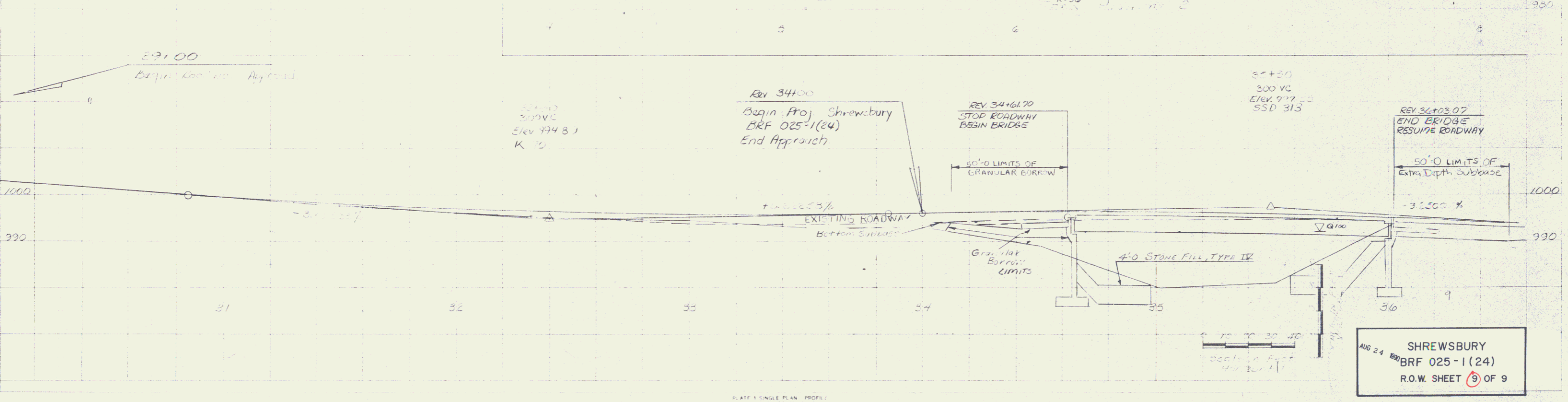
SHREWSBURY
BRF 025 1(24)
R.O.W. SHEET 6 OF 9

PLATE 1 SINGLE PLAN PROFILE
PHARLES BRUNING CO.



DATUM
VERTICAL NGVD 1929
HORIZONTAL N.A.

DATE	BY
APPROVED	DESIGNED
NOTED	CHECKED
NO.	NO.
PROJECT	PROJECT



AUG 24 2004
SHREWSBURY
BRF 025-1(24)
R.O.W. SHEET 9 OF 9

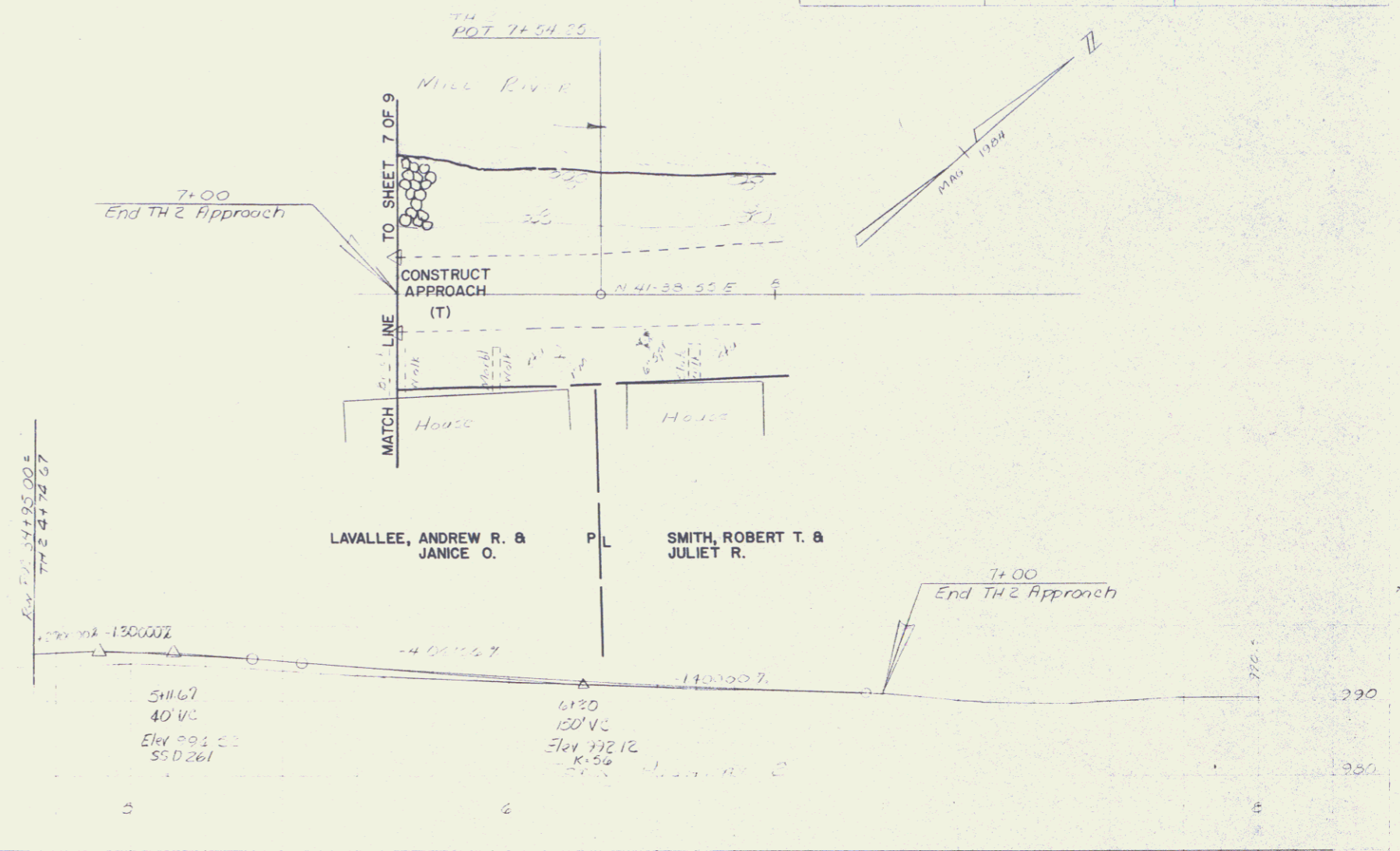


PLATE SINGLE PLAN, PROFILE
SCALE: 1"=40'