

CONSTRUCT DRIVE
 29+70 LT (match exist.)
 Rev. 30+85 RT (12' wide)
 Rev. 32+03 LT (12' wide) (Paved)
 Rev. 32+87 LT (16' wide) (Pave to Const Limit)
 Rev. 34+18 RT (16' wide) (Pave to Const Limit)
 TH 2 6+17 RT (12' wide)
 TH 2 6+66 RT (18' wide)
 Rev. 32+25 RT (16' wide)
 Rev. 33+12 LT (12' wide)

ALUMINUM APPROACH RAILING
 REV. 34+15 LT ~ REV. 34+42 LT.
 TH 2 5+43 LT ~ TH 2 5+68 LT.

PORTLAND CEMENT CONCRETE SIDEWALK 5"
 TH 2 5+35 LT ~ TH 2 5+60 LT.

TRANSPLANTING TREES
 TH 2 5+54 RT (4" MAPLE) ✓
 (LOCATION TO BE DETERMINED BY PROPERTY OWNER AND ENGINEER)

STEEL BEAM GUARD RAIL
 REV. 33+77 LT ~ REV. 34+15 LT.
 TH 2 5+68 LT ~ TH 2 6+66 LT.

VERTICAL GRANITE CURB
 TH 2 5+35 LT ~ TH 2 5+60 LT.

CONSTRUCT SIDEWALK RAMP TYPE I
 TH 2 5+60 LT.

TRANSPLANTING SHRUBS
 TH 2 5+62 RT - 5+80 RT (HILACS) ✓
 (LOCATION TO BE DETERMINED BY PROPERTY OWNER AND ENGINEER)

REMOVAL & DISPOSAL OF GUARD RAIL
 REV. 34+16 RT ~ REV. 34+80 RT

REMOVING LARGE STUMPS
 TH 2 6+54 RT (48")
 REV. 34+57 RT (48")

REMOVING SMALL TREES
 REV. 34+30 RT (12" MAPLE)

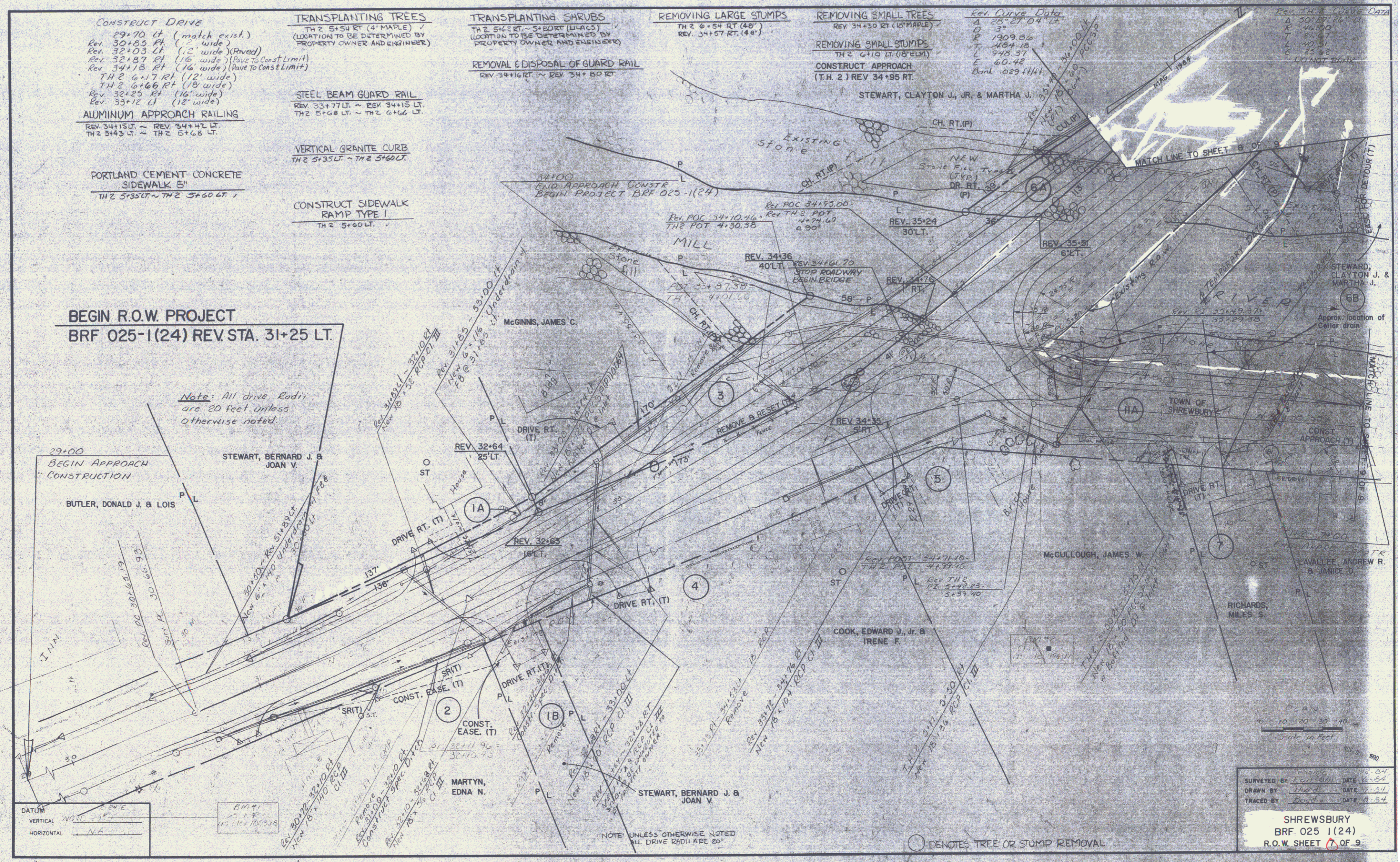
REMOVING SMALL STUMPS
 TH 2 6+10 LT (18" ELM)
CONSTRUCT APPROACH
 (T.H. 2) REV. 34+95 RT

Rev. Curve Data
 A 28+27.04 LT
 D 3'
 P 1309.86
 T 484.18
 L 948.37
 E 60.42
 Dist. 029.14 ft

Rev. T.H. Curve Data
 A 30+18.26 LT
 E 46.00
 T 84.47
 L 40.31
 E 23.62
 DO NOT BANK

BEGIN R.O.W. PROJECT
BRF 025-1(24) REV STA. 31+25 LT.

Note: All drive Radii are 20 feet unless otherwise noted.



SURVEYED BY: *Boyd* DATE: 11-54
 DRAWN BY: *Boyd* DATE: 1-54
 TRACED BY: *Boyd* DATE: 8-54

SHREWSBURY
 BRF 025 1(24)
 R.O.W. SHEET 7 OF 9

NOTE: UNLESS OTHERWISE NOTED ALL DRIVE RADI ARE 20'

○ DENOTES TREE OR STUMP REMOVAL