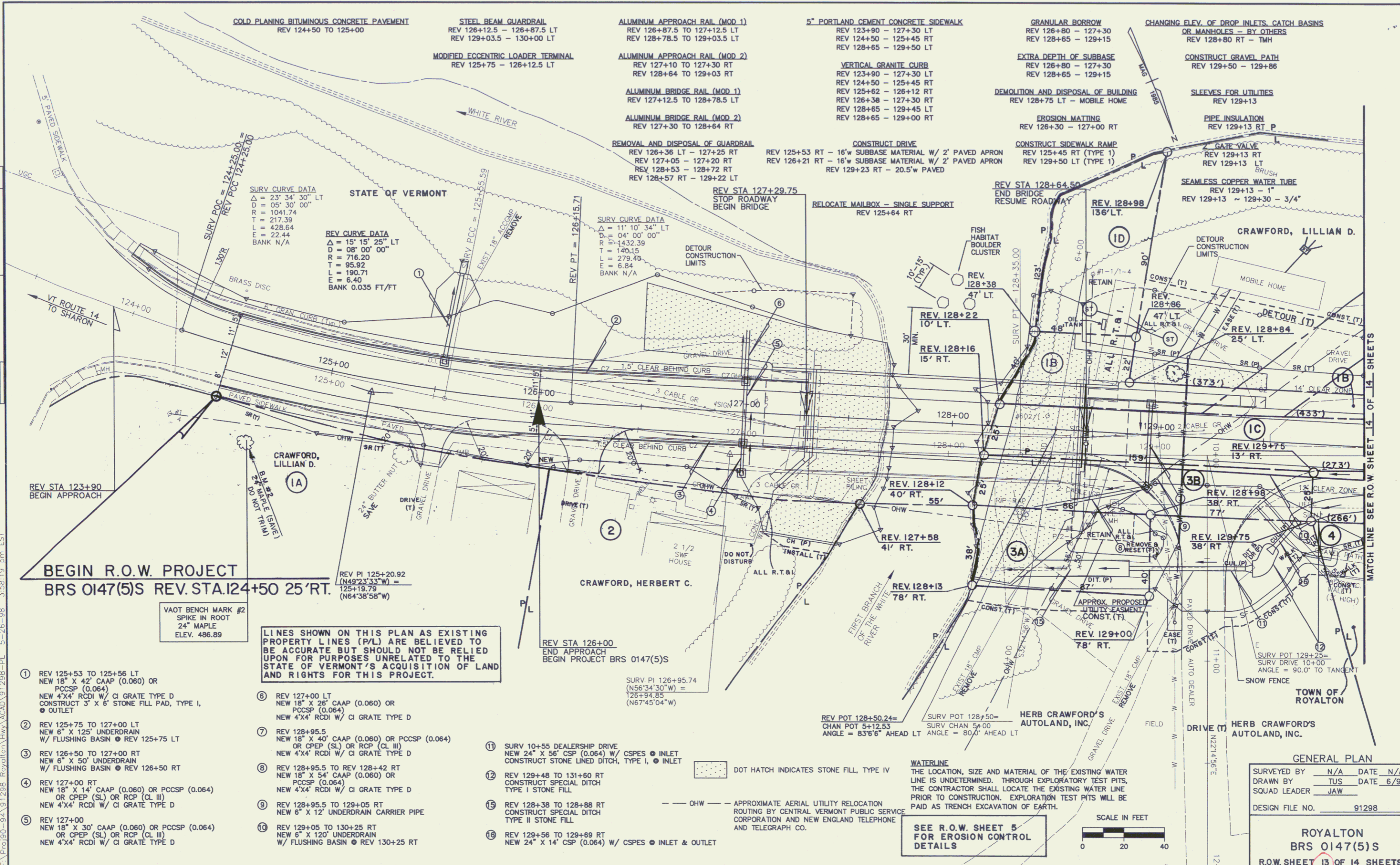


DATE	
BY	
PLAN	
REVISIONS	
NO.	
DATE	
BY	
DESCRIPTION	
NO.	



BEGIN R.O.W. PROJECT
BRS 0147(5)S REV. STA. 124+50 25' RT.

VAOT BENCH MARK #2
 SPIKE IN ROOT
 24" MAPLE
 ELEV. 486.89

LINE SHOWN ON THIS PLAN AS EXISTING
 PROPERTY LINES (P/L) ARE BELIEVED TO
 BE ACCURATE BUT SHOULD NOT BE RELIED
 UPON FOR PURPOSES UNRELATED TO THE
 STATE OF VERMONT'S ACQUISITION OF LAND
 AND RIGHTS FOR THIS PROJECT.

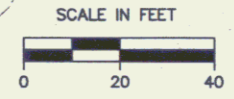
- 1 REV 125+53 TO 125+56 LT
 NEW 18" X 42" CAAP (0.060) OR
 PCCSP (0.064)
 NEW 4'X4' RCDI W/ CI GRATE TYPE D
 CONSTRUCT 3' X 6' STONE FILL PAD, TYPE I,
 O OUTLET
- 2 REV 125+75 TO 127+00 LT
 NEW 6" X 12" UNDERDRAIN
 W/ FLUSHING BASIN @ REV 125+75 LT
- 3 REV 126+50 TO 127+00 RT
 NEW 6" X 50' UNDERDRAIN
 W/ FLUSHING BASIN @ REV 126+50 RT
- 4 REV 127+00 RT
 NEW 18" X 14" CAAP (0.060) OR PCCSP (0.064)
 OR CPEP (SL) OR RCP (CL III)
 NEW 4'X4' RCDI W/ CI GRATE TYPE D
- 5 REV 127+00
 NEW 18" X 30" CAAP (0.060) OR PCCSP (0.064)
 OR CPEP (SL) OR RCP (CL III)
 NEW 4'X4' RCDI W/ CI GRATE TYPE D
- 6 REV 127+00 LT
 NEW 18" X 26" CAAP (0.060) OR
 PCCSP (0.064)
 NEW 4'X4' RCDI W/ CI GRATE TYPE D
- 7 REV 128+95.5
 NEW 18" X 40" CAAP (0.060) OR PCCSP (0.064)
 OR CPEP (SL) OR RCP (CL III)
 NEW 4'X4' RCDI W/ CI GRATE TYPE D
- 8 REV 128+95.5 TO 128+42 RT
 NEW 18" X 54" CAAP (0.060) OR
 PCCSP (0.064)
 NEW 4'X4' RCDI W/ CI GRATE TYPE D
- 9 REV 128+95.5 TO 129+05 RT
 NEW 6" X 12" UNDERDRAIN CARRIER PIPE
- 10 REV 129+05 TO 130+25 RT
 NEW 6" X 120' UNDERDRAIN
 W/ FLUSHING BASIN @ REV 130+25 RT
- 11 SURV 10+55 DEALERSHIP DRIVE
 NEW 24" X 56" CSP (0.064) W/ CSPES @ INLET
 CONSTRUCT STONE LINED DITCH, TYPE I, @ INLET
- 12 REV 128+48 TO 131+80 RT
 CONSTRUCT SPECIAL DITCH
 TYPE I STONE FILL
- 13 REV 128+38 TO 128+88 RT
 CONSTRUCT SPECIAL DITCH
 TYPE II STONE FILL
- 14 REV 129+56 TO 129+89 RT
 NEW 24" X 14" CSP (0.064) W/ CSPES @ INLET & OUTLET

DOT HATCH INDICATES STONE FILL TYPE IV

— OHW — APPROXIMATE AERIAL UTILITY RELOCATION
 ROUTING BY CENTRAL VERMONT PUBLIC SERVICE
 CORPORATION AND NEW ENGLAND TELEPHONE
 AND TELEGRAPH CO.

WATERLINE
 THE LOCATION, SIZE AND MATERIAL OF THE EXISTING WATER
 LINE IS UNDETERMINED. THROUGH EXPLORATORY TEST PITS,
 THE CONTRACTOR SHALL LOCATE THE EXISTING WATER LINE
 PRIOR TO CONSTRUCTION. EXPLORATION TEST PITS WILL BE
 PAID AS TRENCH EXCAVATION OF EARTH.

**SEE R.O.W. SHEET 5
 FOR EROSION CONTROL
 DETAILS**



GENERAL PLAN

SURVEYED BY	N/A	DATE	N/A
DRAWN BY	IUS	DATE	6/96
SQUAD LEADER	JAW		
DESIGN FILE NO.	91298		

ROYALTON
BRS 0147(5)S
R.O.W. SHEET 13 OF 14 SHEETS