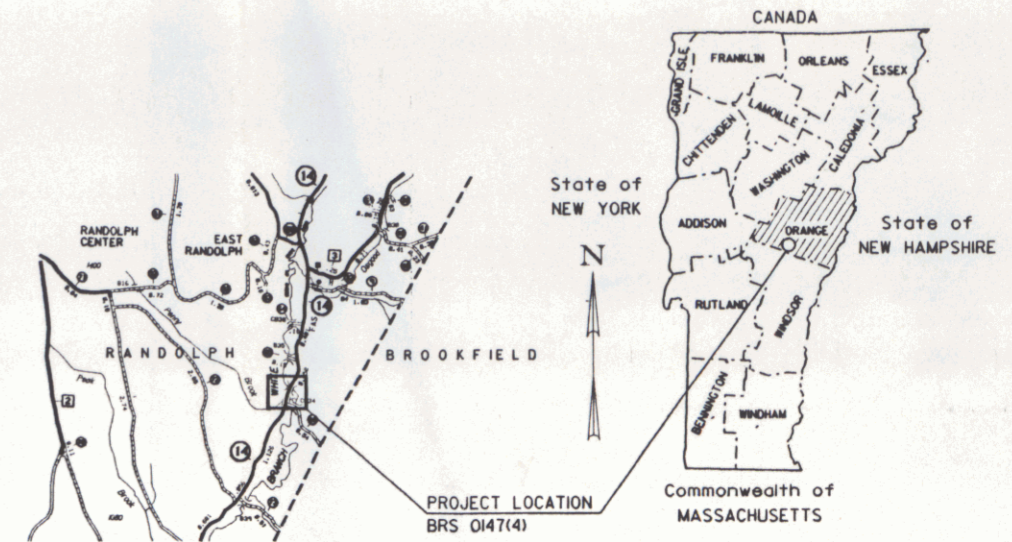


STATE OF VERMONT
AGENCY OF TRANSPORTATION



PROPOSED IMPROVEMENT
TOWN OF RANDOLPH
COUNTY OF ORANGE
VT. RTE. 14 (F.A.S.)

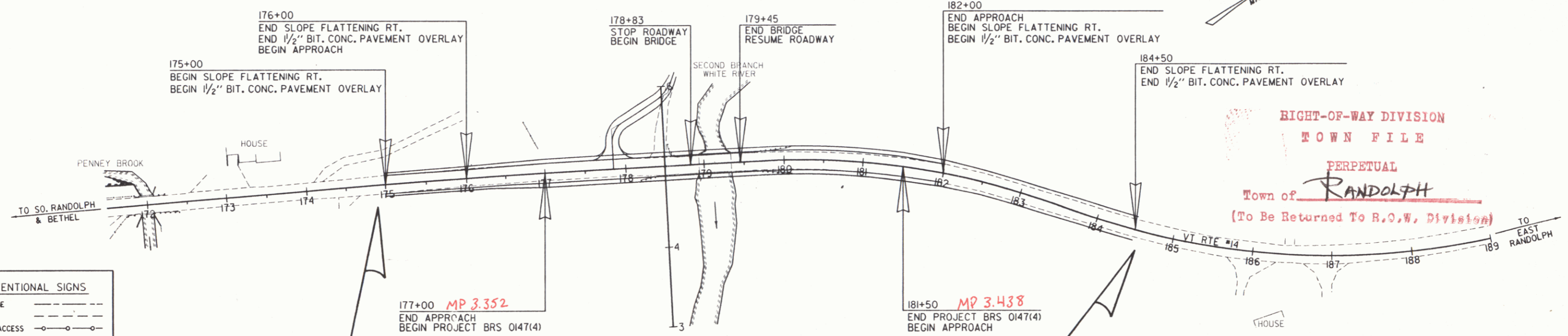


R.O.W. PLANS

FUNCTIONAL CLASSIFICATION - MAJOR COLLECTOR

BEGINNING AT A POINT ON VT. ROUTE 14 IN THE TOWN OF RANDOLPH 3.352 MILES NORTHERLY OF THE BETHEL-RANDOLPH TOWN LINE AND EXTENDING NORTHERLY 0.085 MILES.

LENGTH OF ROADWAY 388.00 FEET = 0.073 MILES
 LENGTH OF BRIDGE 62.00 FEET = 0.012 MILES
 LENGTH OF PROJECT 450.00 FEET = 0.085 MILES
 LENGTH OF R.O.W. PROJECT 965.00 FEET = 0.183 MILES
 WORK TO BE PERFORMED UNDER THIS PROJECT INCLUDES REMOVAL OF EXISTING BRIDGE AND CONSTRUCTION OF A NEW BRIDGE ON EXISTING ALIGNMENT. APPROACH WORK CONSISTS OF GRADING, DRAINAGE, SUBBASE, PAVEMENT AND GUARD RAIL.



CONVENTIONAL SIGNS

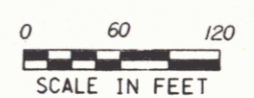
COUNTY LINE	---
TOWN LINE	----
LIMITS OF ACCESS	—o—o—
POINT OF ACCESS	X
FENCE LINE	—x—x—
STONE WALL	—o—o—o—o—
TRAVELED WAY	—o—o—o—o—
GUARD RAIL	—o—o—o—o—
RAILROAD	— — — — —
SURVEY LINE	—+—+—+—+—
CULVERT	—x—x—x—x—
POWER POLE	⊕
TELEPHONE POLE	⊕
TREES	* * *
CONTROL OF ACCESS	—/—/—/—/—
PROPERTY LINE	— — — — —
R.O.W. TAKING LINE	—SR—
SLOPE RIGHTS	—o—o—o—o—
TOP OF CUT	—Δ—Δ—Δ—Δ—
1/2% OF SLOPE	—o—o—o—o—

DATUM

VERTICAL	NGVD 1929
HORIZONTAL	N/A

END R. O. W. PROJECT
BRS 0147(4) STA. 184+55 23' RT.

BEGIN R. O. W. PROJECT
BRS 0147(4) STA. 174+90 25' RT.



THESE PLANS ARE SUBJECT TO SUCH ENGINEERING CHANGES AS MAY BE REQUIRED BY THE FEDERAL HIGHWAY ADMINISTRATION OR THE CHIEF ENGINEER. CONSTRUCTION IS TO BE CARRIED ON IN ACCORDANCE WITH THESE PLANS AND THE STANDARD SPECIFICATIONS FOR CONSTRUCTION DATED 1990, AS APPROVED BY THE FEDERAL HIGHWAY ADMINISTRATION ON MARCH 15, 1990 FOR USE ON THIS PROJECT, INCLUDING ALL SUBSEQUENT REVISIONS AND SUCH REVISED SPECIFICATIONS AND SPECIAL PROVISIONS AS ARE INCORPORATED IN THESE PLANS.

Pin# 28F226

APPROVED: *Stephen P. MacArthur* DATE 6/11/96
Director of Engineering

APPROVED: *William J. Davis* DATE 4/11/96
Chief of Right of Way

RANDOLPH
BRS 0147(4)
R.O.W. SHEET 1 OF 9 SHEETS

JUL 17 1996