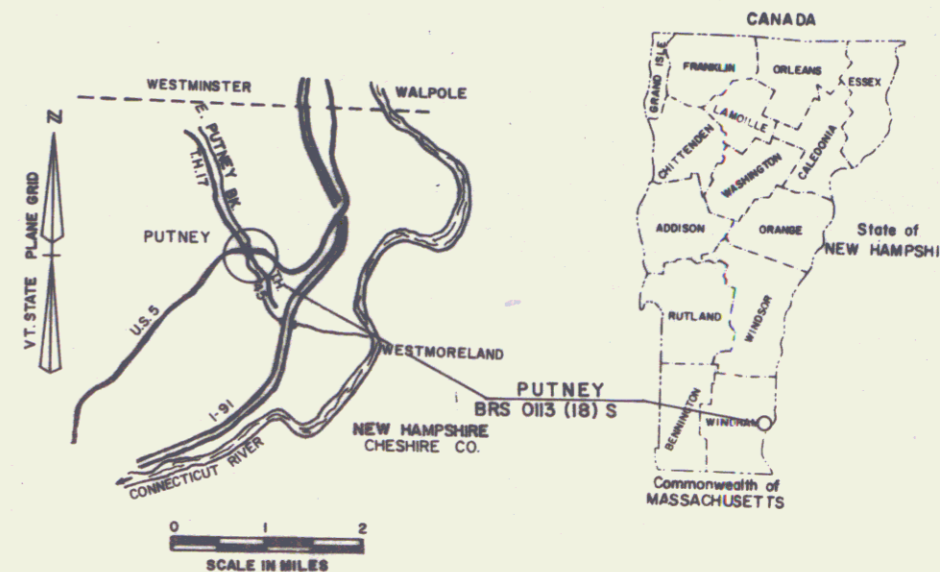


INDEX OF SHEETS

# STATE OF VERMONT AGENCY OF TRANSPORTATION



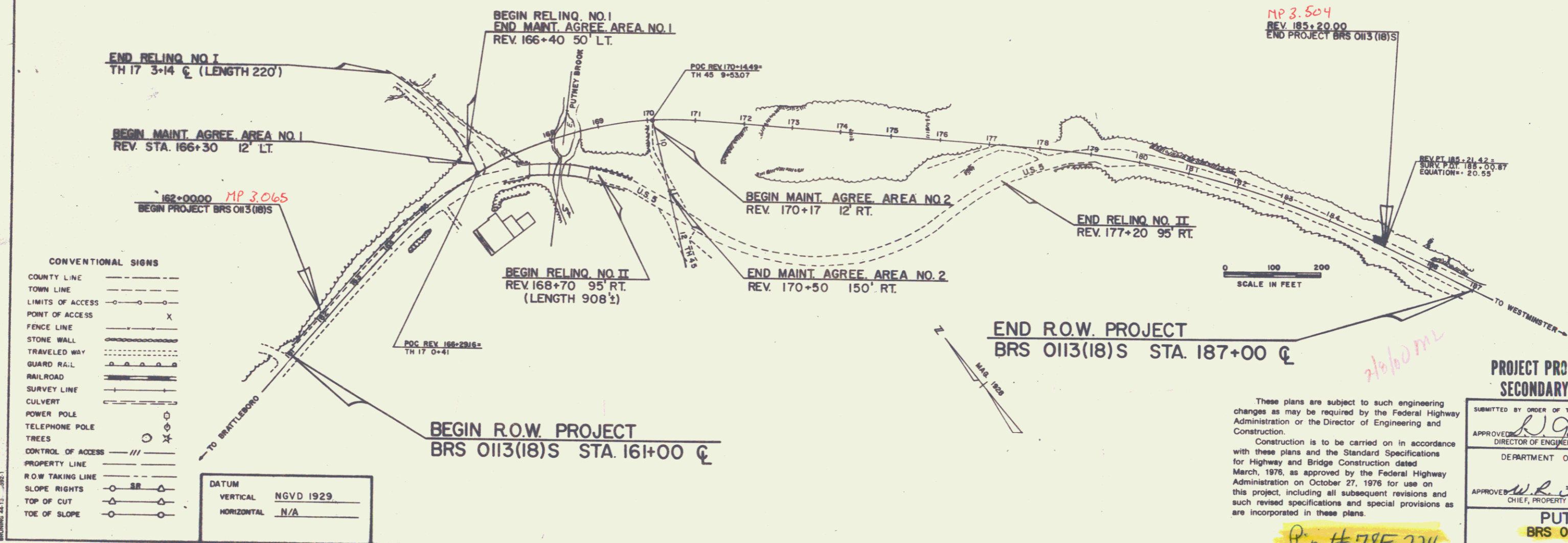
## PROPOSED IMPROVEMENT TOWN OF PUTNEY COUNTY OF WINDHAM U.S. ROUTE 5



RIGHT-OF-WAY DIVISION  
TOWN FILE  
TENTATIVE  
Town of \_\_\_\_\_  
(To Be Returned To R.O.W. Division)

### R.O.W. PLANS

BEGINNING AT A POINT APPROXIMATELY 2.40 MILES SOUTH WEST OF THE WESTMINSTER-PUTNEY TOWN LINE AND EXTENDING EASTERLY 0.439 MILES.  
LENGTH OF ROADWAY 2320.00 FT. = 0.439 MILE  
LENGTH OF BRIDGE FT. = MILE  
LENGTH OF PROJECT FT. = MILE  
LENGTH OF ROW PROJ. 2620.55 FT. = 0.496 MILE  
WORK TO BE PERFORMED UNDER THIS PROJECT INCLUDES REPLACING EXISTING STRUCTURE WITH A NEW REINFORCED CONCRETE BOX AND RELOCATION OF U.S. 5.



- CONVENTIONAL SIGNS
- COUNTY LINE
  - TOWN LINE
  - LIMITS OF ACCESS
  - POINT OF ACCESS
  - FENCE LINE
  - STONE WALL
  - TRAVELED WAY
  - GUARD RAIL
  - RAILROAD
  - SURVEY LINE
  - CULVERT
  - POWER POLE
  - TELEPHONE POLE
  - TREES
  - CONTROL OF ACCESS
  - PROPERTY LINE
  - R.O.W. TAKING LINE
  - SLOPE RIGHTS
  - TOP OF CUT
  - TOE OF SLOPE

DATUM	
VERTICAL	NGVD 1929
HORIZONTAL	N/A

These plans are subject to such engineering changes as may be required by the Federal Highway Administration or the Director of Engineering and Construction.  
Construction is to be carried on in accordance with these plans and the Standard Specifications for Highway and Bridge Construction dated March, 1976, as approved by the Federal Highway Administration on October 27, 1976 for use on this project, including all subsequent revisions and such revised specifications and special provisions as are incorporated in these plans.

PROJECT PROCESSED UNDER  
SECONDARY ROAD PLAN

SUBMITTED BY ORDER OF THE STATE TRANSPORTATION BOARD

APPROVED: *[Signature]* DATE: 1-4-77  
DIRECTOR OF ENGINEERING AND CONSTRUCTION

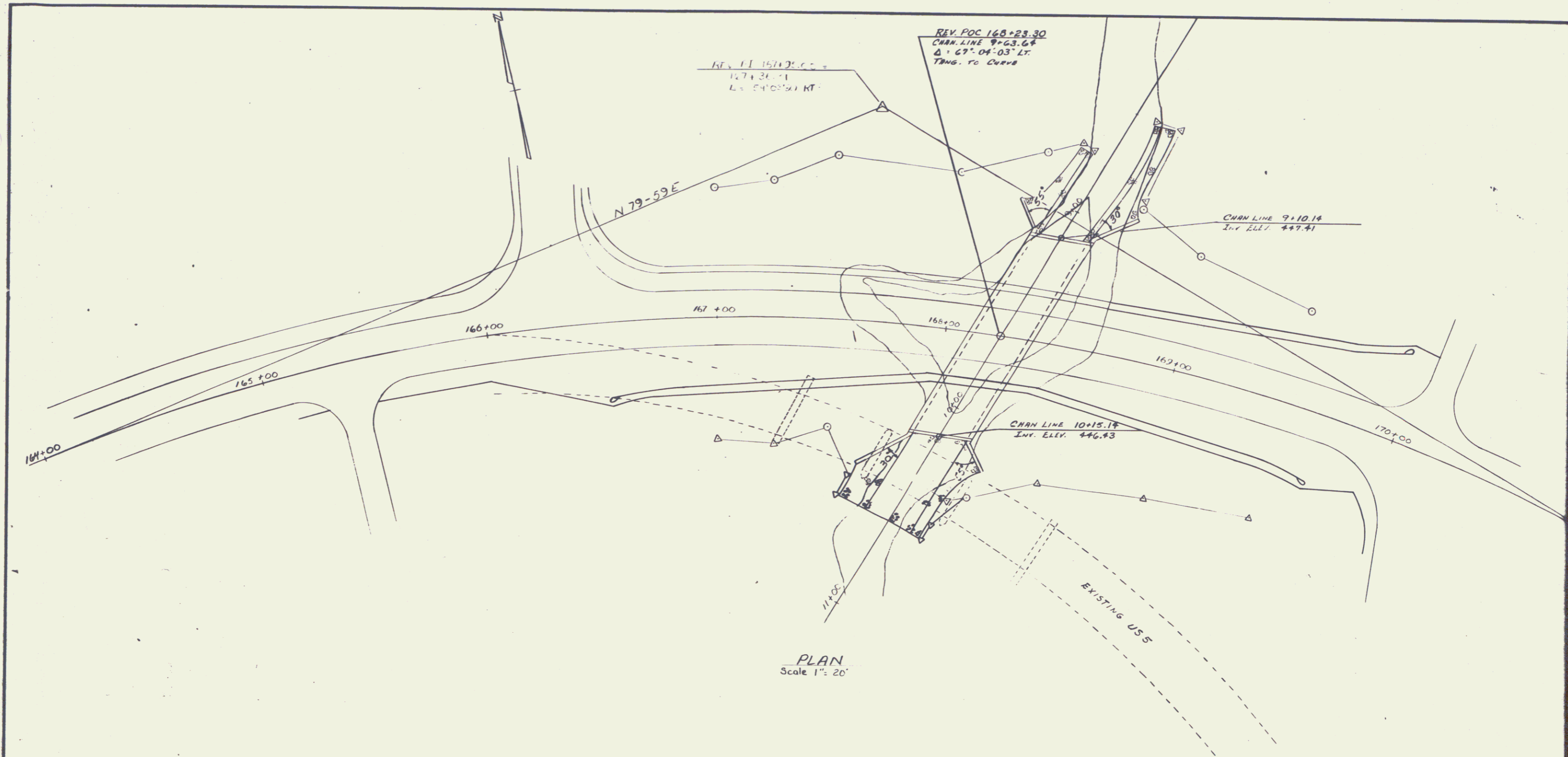
DEPARTMENT OF TRANSPORTATION

APPROVED: *[Signature]* DATE: 1-4-77  
CHIEF, PROPERTY ADMINISTRATION

**PUTNEY  
BRS 0113(18)S**

SHEET 1 OF 9

Pin # 78F224



PLAN  
Scale 1" = 20'

STATE OF VERMONT	
AGENCY OF TRANSPORTATION	
TOWN OF PUTNEY	Bridge No. 78
HIGHWAY NO. U.S. 5	Log Sta.
U.S. 5 OVER PUTNEY BROOK	
PLAN	
Designed by R. Aldrich	Drawn by R. Aldrich
Checked by	Bridge Design Supervisor
date	date
PROJECT PUTNEY	PROJECT NO. BRS 013(18) S
Bridge Sheet No.	Sheet 4 of 9



STATE OF VERMONT  
AGENCY OF TRANSPORTATION  
RIGHT-OF-WAY PLANS  
DETAIL SHEET

TABLE OF PROJECT PROPERTY ACQUISITION

PARCEL NO.	GRANTOR	SHEET NO.	BEGINNING STATION	ENDING STATION	TAKING	REM.	RIGHTS	TITLE TAKEN	DATE	TOWN OR CITY RECORDED	BK.	PG.	REMARKS
1A	MALE, HUREL R. JR. & VIRGINIA L.	8	161+00 LT.	REV. 165+64 LT.	0.24 Ac.		CONST. EASE (T) (0.10 Ac.)	W.D.		PUTNEY			(2395 S.E.) 16' GRAVEL (MP 0306)
			162+30 LT.	REV. 165+55 LT.		SLOPE (T) (0.05 Ac.)							
1B		8	161+00 LT.	REV. 165+64 LT.	0.01 Ac.		DITCH (P)						(690 S.E.)
			161+05 LT.	REV. 165+50 LT.		CONST. EASE (T) (0.05 Ac.)							
1C		8	161+00 E.	REV. 165+64 LT.	0.28 Ac.		ALL R. T. & I.						HWY. EASE. RTE. 5
			161+40 E.	REV. 165+55 LT.									
1D		8	161+05 RT.	REV. 165+55 LT.	0.04 Ac.		ALL R. T. & I.						(1725 S.E.) TH. 17 EASE.
			161+40 RT.	REV. 165+50 LT.		TOTAL 0.56 Ac.							
2	HENDERSON, GEORGIA B.	8	161+00 E.	REV. 166+35 RT.	0.41 Ac.		ALL R. T. & I.	W.D.		PUTNEY			HWY. EASE. RTE. 5 (4000 S.E.)  12' GRAVEL (MP 0313)
			161+40 RT.	REV. 165+35 RT.		CONST. EASE (T) (0.09 Ac.)							
3A	BROOKSIDE CAMPING INC.	8	161+05 RT.	REV. 166+00 RT.	0.15 Ac.		SLOPE (T) (0.15 Ac.)	W.D.		PUTNEY			(897 S.E.)
			161+00 RT.	REV. 165+15 RT.		CONST. EASE (T) (0.02 Ac.)							
3B		8	161+00 RT.	REV. 165+15 RT.	0.23 Ac.		DRAINAGE (P)						(2375 S.E.) HWY. EASE. RTE. 5
			161+30 RT.	REV. 165+00 RT.									
3C		8	REV. 165+55 LT.	REV. 166+61 LT.	0.05 Ac.		ALL R. T. & I.						(2375 S.E.) HWY. EASE. RTE. 5
			REV. 165+50 LT.	TH. 17 2+42 LT.									
3D		8	REV. 165+55 LT.	REV. 166+00 LT.	0.13 Ac.		ALL R. T. & I.						TH. 17 EASE.
			REV. 165+55 LT.	REV. 166+00 LT.		TOTAL 0.35 Ac.							
3E		8	REV. 165+55 LT.	REV. 166+00 LT.	0.23 Ac.		ALL R. T. & I.						TH. 17 EASE.
			REV. 165+55 LT.	REV. 166+00 LT.		TOTAL 0.35 Ac.							

TABLE OF REVISIONS

REVISION NO.	SHEET NO.	DESCRIPTION OF REVISION	DATE	MADE BY	APPROVED BY
1	5, 8	Parcel # 1 Male, Added Drive + Culvert at Sta 161+00 E. + Temp Drive + Ch. Rtg. per C.O. # 616	1-25-84	DEM	JWB
2	7, 9	Parcel # 8 Deleted. Line dispute between Bamberger & Ortlich settled. per C.O. # 6279	12/21/84	XL	JWB
3	6, 8	Parcel # 5 Change of title, Suitcase to CHS per C.O. 6380	12/21/84	XL	JWB
4	7, 9	Parcel # 7 Change of title, Bamberger to Bamberger, A per C.O. # 6381	12/21/84	XL	JWB
5	6, 7	Parcel # 6a. Stockwell: added new drive at Rev 674 1885007. per C.O. 6378	1-5-85	JWB	JWB

MADE BY: B.A.N. DATE 12/30/83  
CHECKED BY: L.W.B. DATE 12/30/83

DR. RT. - DRAINAGE RIGHT  
DTC. RT. - DITCHING RIGHT  
CH. RT. - CHANNEL RIGHT  
DRIVE RT. - DRIVE RIGHT  
CUL. RT. - CULVERT RIGHT  
D - DEMOLITION OR REMOVAL  
W - WATER SOURCES

PRESENT R.O.W.  
TAKING WITHOUT ACCESS  
TAKING WITHOUT ACCESS ALONG PROPERTY LINES  
TAKING WITH ACCESS  
PERMANENT EASEMENT (P)  
TEMPORARY EASEMENT (T)

LEGEND  
CONST. EASE. ----- CONST. EASEMENT  
SR ----- SR SLOPE RIGHTS  
P ----- P PROPERTY LINE  
-Δ-Δ-Δ- TOP OF CUT  
-O-O-O- TOE OF SLOPE

APPROVED [Signature] DATE 1/4/85  
CHIEF OF PLANS & TITLES

PROJECT PUTNEY  
NO. BRS 0113 (18) S  
SHEET 5 OF 9

STATE OF VERMONT  
AGENCY OF TRANSPORTATION  
RIGHT-OF-WAY PLANS  
DETAIL SHEET

TABLE OF PROJECT PROPERTY ACQUISITION

PARCEL NO.	GRANTOR	SHEET NO.	BEGINNING STATION	ENDING STATION	TAKING	REM.	RIGHTS	TITLE TAKEN	DATE	TOWN OR CITY RECORDED	BK.	PG.	REMARKS
4A	ORTLIEB, WILLIAM L. & LOIS E.	89	REV. 186+85 LI	186+85 LT	0.01 Ac					PUTNEY			12' DRIVE (HP 0322)
			REV. 170+22 LI	REV. 178+73 LI			CONST. EASE. (T) (0.20 Ac)					12' DRIVE (HP 0340)	
			REV. 170+40 LI	REV. 178+73 LI									
			REV. 170+55 LI	REV. 178+80 LI			SLOPE (P) (1.31 Ac)						
			REV. 178+58 LI	186+85 LT									
			REV. 186+85 LT	REV. 178+75 RE			134.47 Ac						
			REV. 171+26 RE	REV. 178+75 RE	1.22 Ac								
4B		8	REV. 187+20 RE	REV. 171+34 RE	0.22 Ac		ALL R. T. & I.						HWY. EASE. RTE. 5
4C		9	REV. 176+75 RE	REV. 186+40 R	0.58 Ac		ALL R. T. & I.						HWY. EASE. RTE. 5
4D		8	REV. 187+26 LI	TL17 3+14 RE	0.17 Ac		ALL R. T. & I.						TL17 EASE.
			TL17 1+25 RE	TL17 4+25 RE			CONST. EASE. (T) (0.06 Ac)				(2800 S.E.±)		
			TL17 1+25 RE	TL17 3+00 RE			SLOPE (P) (0.05 Ac)						(2375 S.E.±)
			TL17 2+48 RE	TL17 2+55 RE			CULVERT & DITCH (P)						
			TL17 2+50 RE				DRAINAGE (P)						
			TOTAL		0.98 Ac	135.89 Ac							
5	ELLIS, FLOYD J.	8	REV. 188+25 RE	REV. 170+45 RE	0.11 Ac		ALL R. T. & I.			PUTNEY			HWY. EASE. RTE. 5
			TL45 11+34 RE	TL45 12+90 RE			CONST. EASE. (T) (0.03 Ac)						(1400 S.E.±)
			TL45 11+38 RE	TL45 12+55 RE			SLOPE (T) (0.01 Ac)						(450 S.E.±)
6A	STOCKWELL, EDWARD D.	89	REV. 178+50 RE	187+00 RE	0.46 Ac		CULVERT (P)			PUTNEY			(2050 S.E.±)
			REV. 179+10 RE	REV. 178+25 RE			DITCH & DRAINAGE (P)					12' GRAVEL (HP 0347)	
			REV. 179+20 RE	REV. 179+30 RE			CONST. EASE. (T) (0.14 Ac)						
			REV. 178+30 RE	REV. 184+20 RE			SLOPE (P) (0.05 Ac)						
			REV. 178+40 RE	REV. 179+90 RE			DITCH & DRAINAGE (P)						
			REV. 183+78 RE				DRIVE (T)						
6B		9	REV. 177+20 RE	187+00 RE	0.57 Ac		ALL R. T. & I.						HWY. EASE. RTE. 5
6C		8	TL45 12+10 LI	TL45 13+15 LI			CONST. EASE. (T) (0.02 Ac)						(800 S.F.±)
			TL45 12+10 LI	TL45 12+70 LI			SLOPE (T) (22 S.F.±)						
			TOTAL		1.03 Ac								

TABLE OF REVISIONS

REVISION NO.	SHEET NO.	DESCRIPTION OF REVISION	DATE	MADE BY	APPROVED BY

MADE BY: B.A.N. DATE 12/30/83  
 CHECKED BY: L.W.B. DATE 12/30/83

DR. RT. - DRAINAGE RIGHT  
 DT. RT. - DITCHING RIGHT  
 CH. RT. - CHANNEL RIGHT  
 DRIVE. RT. - DRIVE RIGHT  
 CUL. RT. - CULVERT RIGHT  
 (D) - DEMOLITION OR REMOVAL  
 (W) - WATER SOURCES

PRESENT R.O.W.  
 - - - - - TAKING WITHOUT ACCESS  
 - - - - - TAKING WITHOUT ACCESS ALONG PROPERTY LINES  
 - - - - - TAKING WITH ACCESS  
 (P) - PERMANENT EASEMENT  
 (T) - TEMPORARY EASEMENT

LEGEND  
 - - - - - CONST. EASE. - - - - - CONST. EASEMENT  
 SR - SR - SLOPE RIGHTS  
 P - P - PROPERTY LINE  
 - Δ - Δ - TOP OF CUT  
 - O - O - TOE OF SLOPE

APPROVED: [Signature] DATE 1/1/84  
 CHIEF OF PLANS & TITLES

PROJECT PUTNEY  
 NO. BRS 0113 (18)S  
 SHEET 6 OF 9

STATE OF VERMONT  
AGENCY OF TRANSPORTATION  
RIGHT-OF-WAY PLANS  
DETAIL SHEET

TABLE OF PROJECT PROPERTY ACQUISITION

PARCEL NO.	GRANTOR	SHEET NO.	BEGINNING STATION	ENDING STATION	TAKING	REM.	RIGHTS	TITLE TAKEN	DATE	TOWN OR CITY RECORDED	BK.	PG.	REMARKS
7	BAMBERGER, ANDREW F.	9	186+40 E	187+00 E	0.03 A±		ALL R.T. & I.	WD.		PUTNEY			(1500 SF±) HWY. EASE. RTE. 5
8	DELETED												FORMERLY DISPUTED PARCEL BAMBERGER & ORTLIEB, NOW PART OF PARCEL NO. 4
													HWY. EASE. RTE. 5
9A	TOWN OF PUTNEY	8	REV. 166+61 LT. TH.17 4+25 E	TH.17 3+14 LT.	0.34 A±		ALL R.T. & I. CONST. APPROACH (T)	WD.		PUTNEY			HWY. EASE. TH.17 TH.17
9B		8	REV. 166+50 RT.	REV. 167+26 RT.	0.04 A±		ALL R.T. & I.						(1850 SF±) HWY. EASE. RTE. 5
9C		8	REV. 170+35 RT. TH.45 13+25 E	REV. 171+34 RT.	0.05 A±		ALL R.T. & I. CONST. APPROACH (T)						(2000 SF±) HWY. EASE. RTE. 5 TH.45
10	NEW ENGLAND POWER CO.												UTILITY
11	NEW ENGLAND TELEPHONE & TELEGRAPH CO.												UTILITY
	MAINT. AGREE. AREA NO. 1	8	REV. 166+30 LT.	REV. 168+40 LT.									TH.17 (38'±)
	MAINT. AGREE. AREA NO. 2	8	REV. 170+17 RT.	REV. 170+50 RT.									TH.45 (142'±)
	RELINO. AREA NO. I	8	REV. 166+40 LT.	TH.17 3+14 E									TH.17 (220'±)
	RELINO. AREA NO. II	8,9	REV. 188+70 RT.	REV. 177+20 RT.									RTE. 5 (908'±)

TABLE OF REVISIONS

REVISION NO.	SHEET NO.	DESCRIPTION OF REVISION	DATE	MADE BY	APPROVED BY

MADE BY: D.E.H. DATE 12-30-83  
CHECKED BY: L.W.B. DATE 12-30-83

DR. RT. — DRAINAGE RIGHT  
DIT. RT. — DITCHING RIGHT  
CH. RT. — CHANNEL RIGHT  
DRIVE RT. — DRIVE RIGHT  
CUL. RT. — CULVERT RIGHT  
ⓓ — DEMOLITION OR REMOVAL  
W — WATER SOURCES

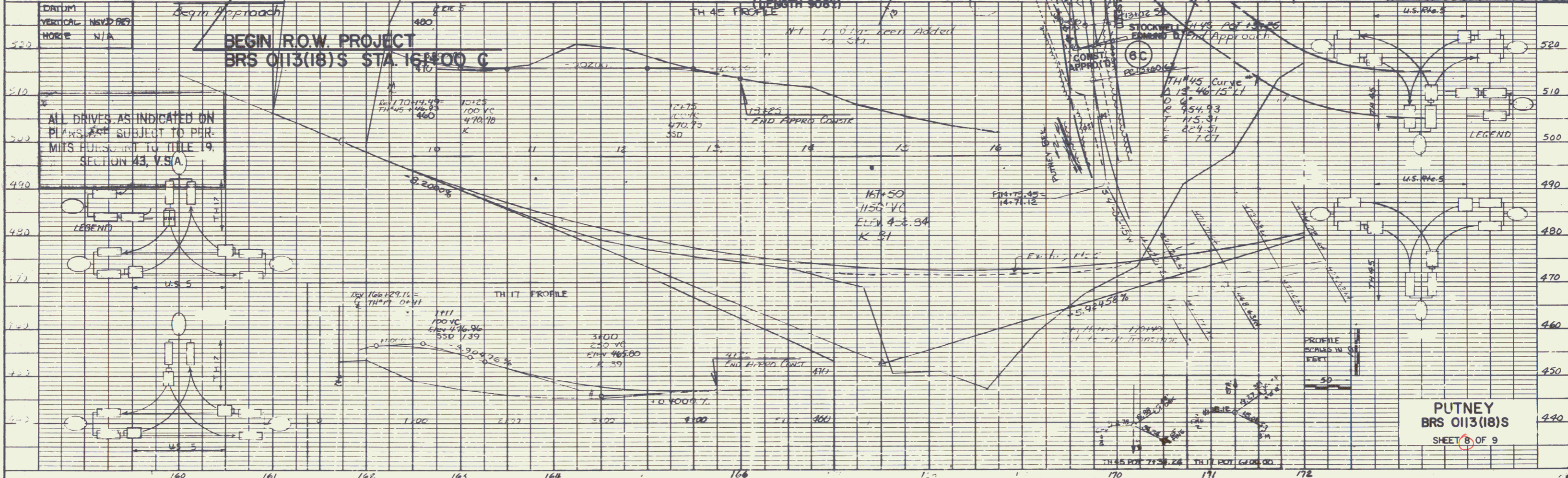
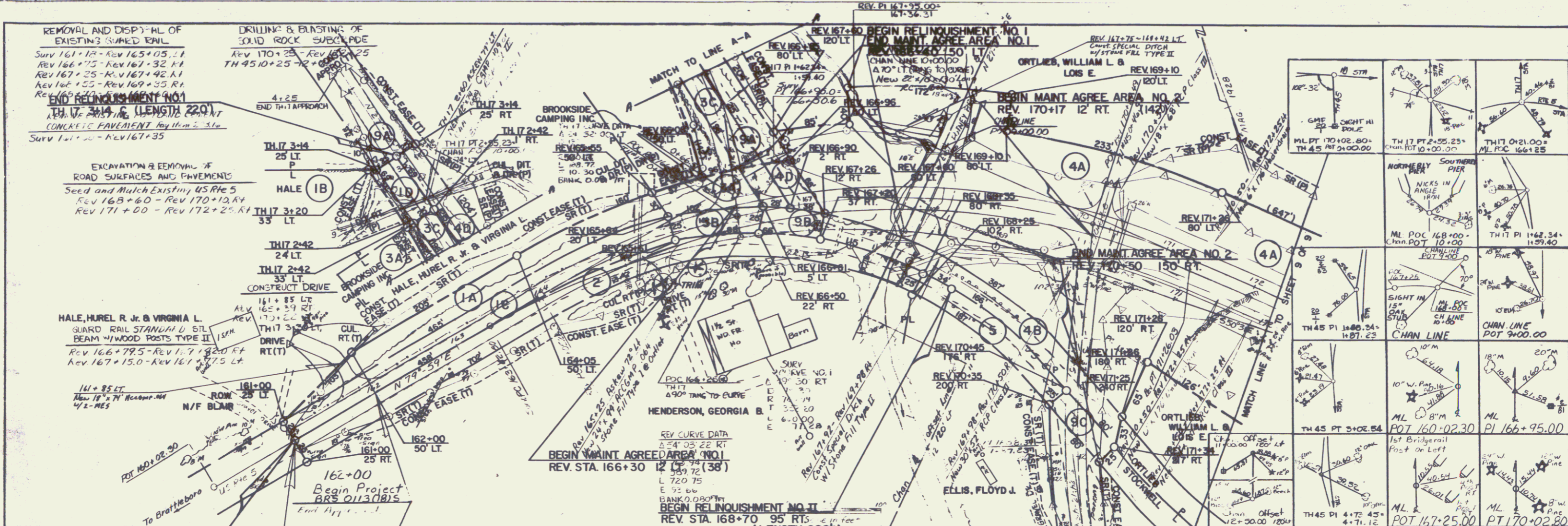
————— PRESENT R.O.W.  
// — // TAKING WITHOUT ACCESS  
// — P — // TAKING WITHOUT ACCESS ALONG PROPERTY LINES  
————— TAKING WITH ACCESS  
(P) PERMANENT EASEMENT  
(T) TEMPORARY EASEMENT

LEGEND  
----- CONST. EASE ----- CONST. EASEMENT  
SR — SR — SLOPE RIGHTS  
P — P — PROPERTY LINE  
— Δ — Δ — Δ — TOP OF CUT  
— ○ — ○ — ○ — TOE OF SLOPE

APPROVED Lawrence W. Polking DATE 1/1/84  
CHIEF OF PLANS & TITLES

PROJECT PUTNEY  
NO. BRS 0113 (18) S  
SHEET 7 OF 9

ROW



**PLAN**

DATE: \_\_\_\_\_

BY: \_\_\_\_\_

CHECKED: \_\_\_\_\_

SCALE: \_\_\_\_\_

NOTE BOOK: \_\_\_\_\_

**PROFILE**

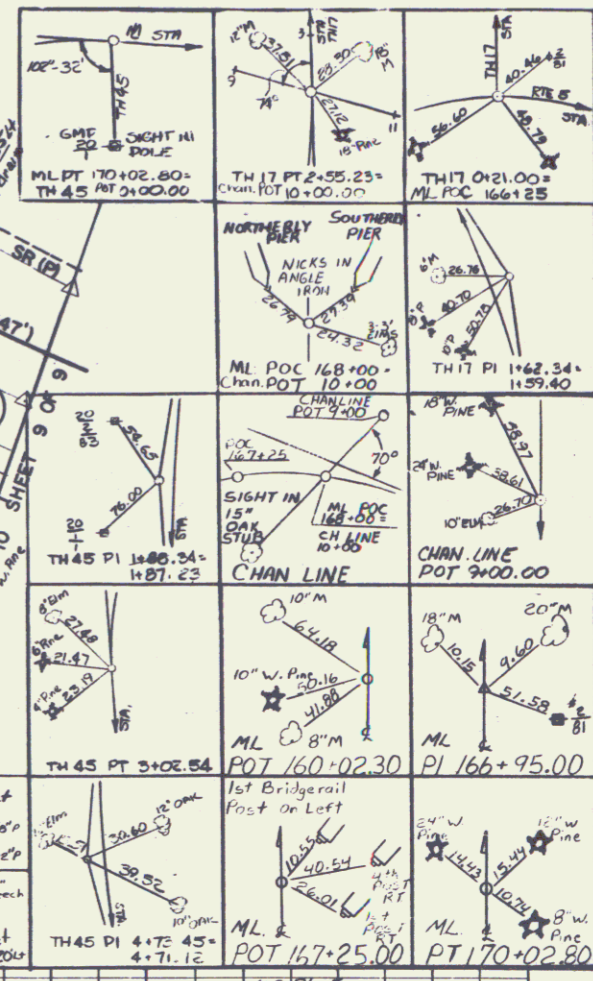
DATE: \_\_\_\_\_

BY: \_\_\_\_\_

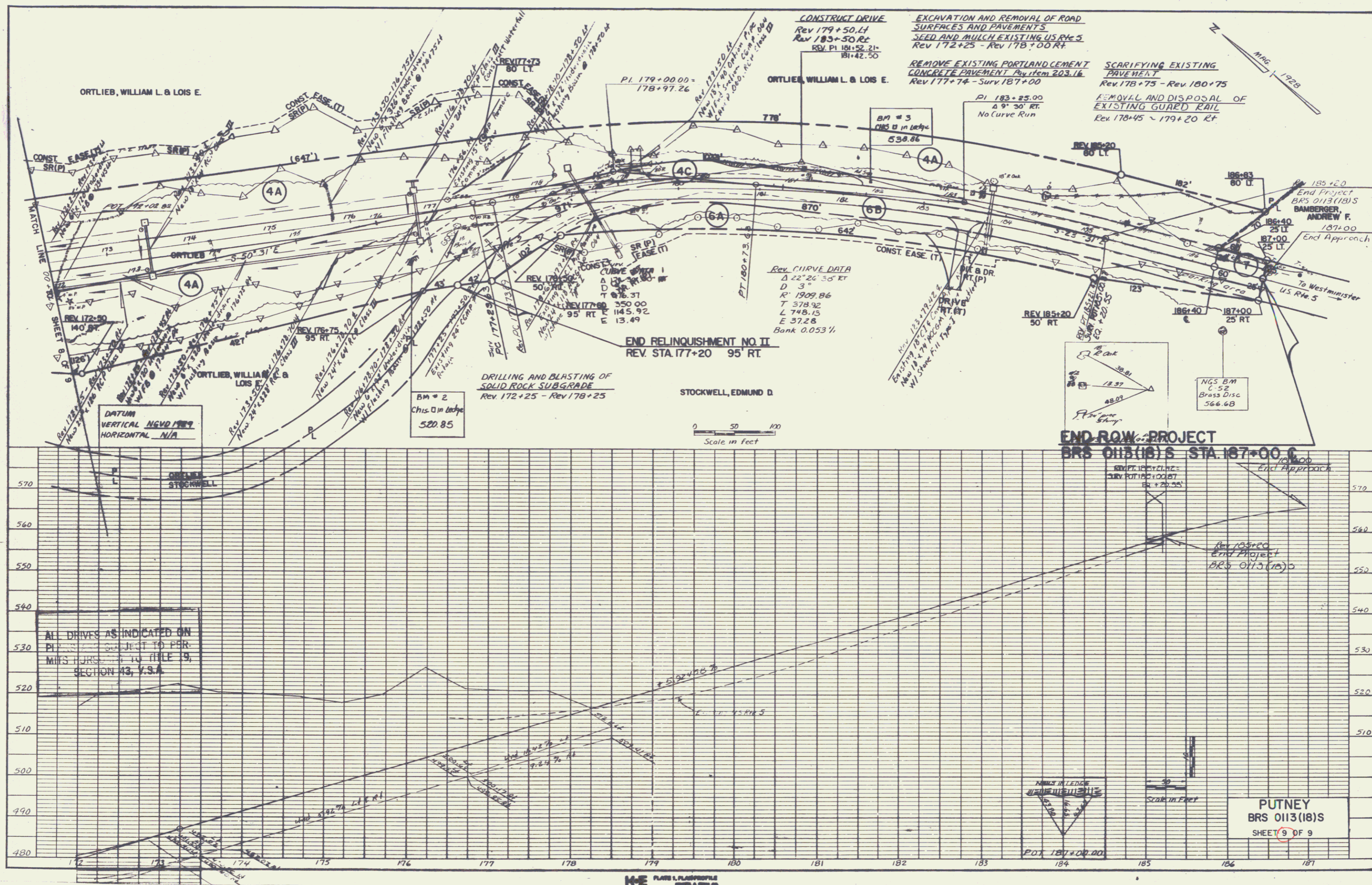
CHECKED: \_\_\_\_\_

SCALE: \_\_\_\_\_

NOTE BOOK: \_\_\_\_\_



**PUTNEY**  
BRS 0113(18)  
SHEET 6 OF 9



**PLAN**

REVISION	DATE	BY	CHKD

**PROFILE**

REVISION	DATE	BY	CHKD

ALL DRIVES AS INDICATED ON  
 PLANS SUBJECT TO PER-  
 MITS PURSUANT TO TITLE 19,  
 SECTION 43, V.S.A.

**PUTNEY**  
 BRS 0113(18)S  
 SHEET 9 OF 9

7