

GPS CONTROL POINTS

**HVCTRL #1**

STANDARD DISK STAMPED  
Laskey  
N = 653522.44  
E = 1590034.23  
ELEV. =

TO REACH FROM THE JUNCTION OF US ROUTE 2 + VT ROUTE 100B IN MIDDLESEX VILLAGE PROCEED SOUTHWESTERLY ALONG ROUTE 100B FOR 0.6 MI (1.0 KM) TO A DRIVEWAY SOUTH, THENCE SOUTH ALONG SAID DRIVE FOR 0.1 MI (0.2 KM) TO THE HOUSE OF DAVID LASKEY AND SITE OF MARK WSW OF THE HOUSE. OWNERSHIP, DAVID LASKEY STATION MARK, STATE OF VERMONT SURVEY MARK DISK IN THE TOP OF A 30CM DIAMETER CONCRETE MONUMENT FLUSH WITH GROUND SURFACE. IT IS 69.60 FT (21.21 M) MAG AZ 245-30 FROM NW CORNER OF LASKEY HOUSE, 155.10 FT (47.27 M) MAG AZ 41-41 FROM A COMBO POLE (NO NUMBER), 45.90 FT (13.99 M) MAG AZ 119-51 FROM AN ARTESIAN WELL, AND WITNESSED BY A CARSONITE WITNESS POST.

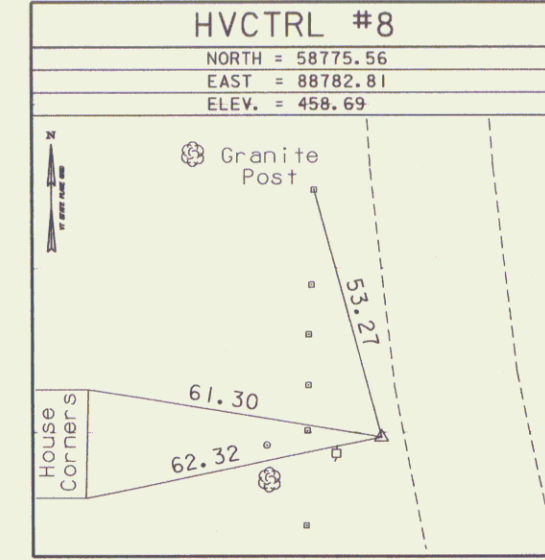
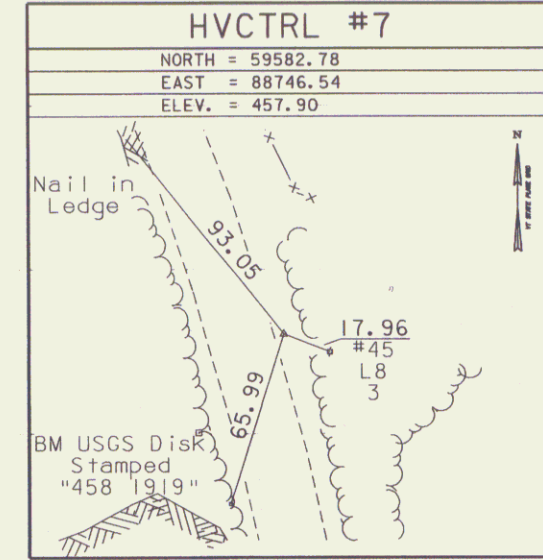
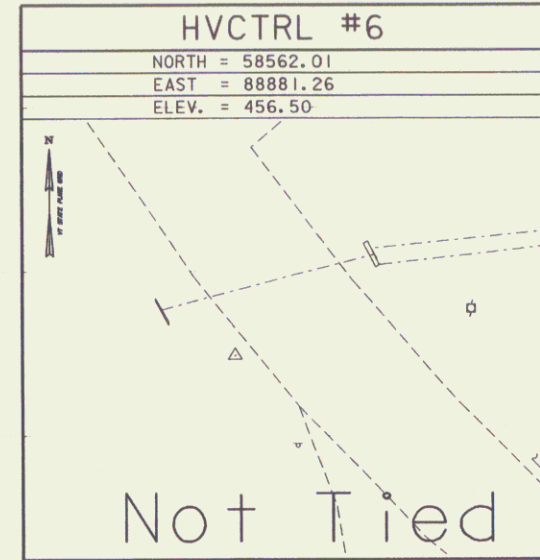
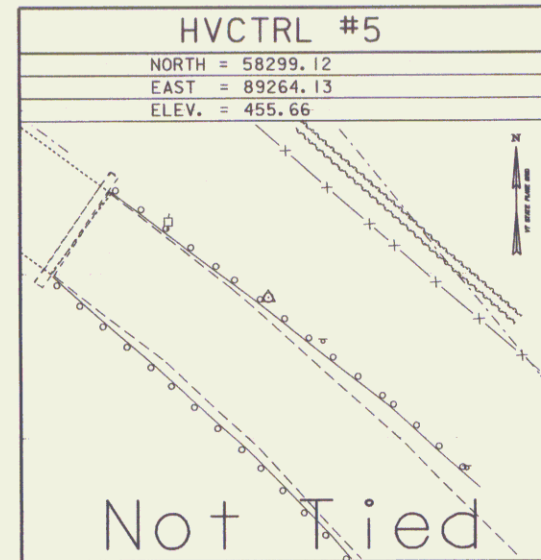
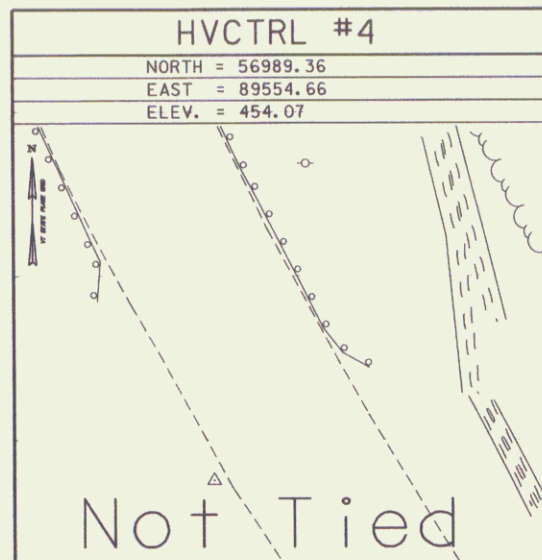
**HVCTRL #2**

STANDARD DISK STAMPED  
Westover  
N = 655416.06  
E = 1591067.44  
ELEV. = 561.29

TO REACH, FROM THE JUNCTION OF U.S. ROUTE 2 AND VT ROUTE 100B SOUTH, PROCEED WESTERLY ON U.S. ROUTE 2 FOR 0.6 MI (1.0 KM) TO THE MARK ON THE SOUTH SIDE OF U.S. ROUTE 2. IT IS 28.2 FT (8.6 M) MAG AZ 238-21 FROM THE CENTERLINE OF U.S. ROUTE 2, 102.5 FT (31.2 M) MAG AZ 336-40 FROM A COMBO POLE (NO NUMBER), 69.20 FT (21.09 M) MAG AZ 129-13 FROM A 6-INCH WHITE BIRCH, 172.7 FT (52.6 M) MAG AZ 147-18 FROM COMBO POLE NO. 23/22/1A, AND WITNESSED BY A CARSONITE WITNESS POST.

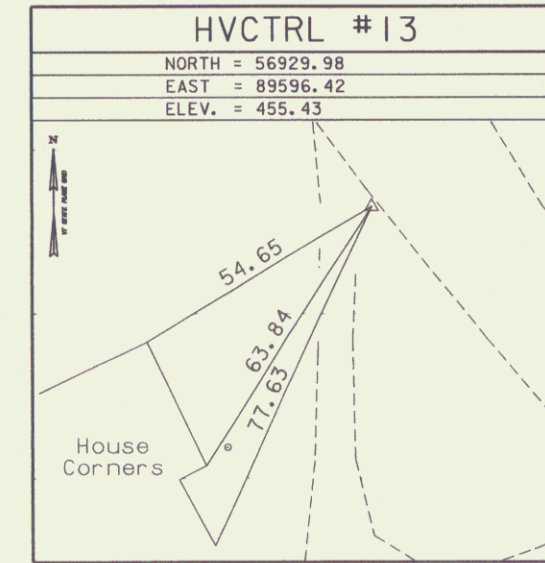
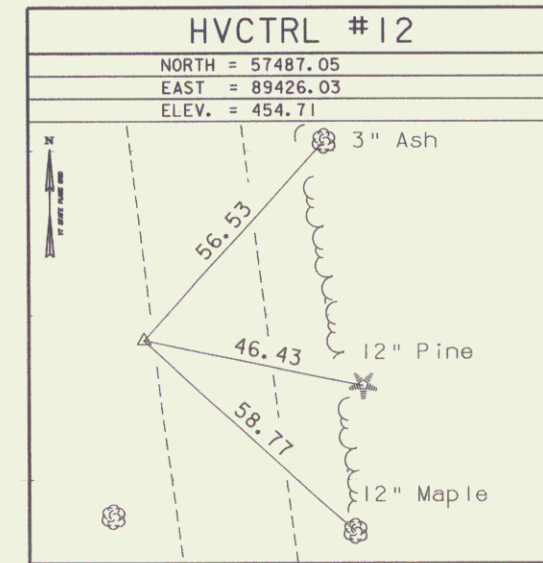
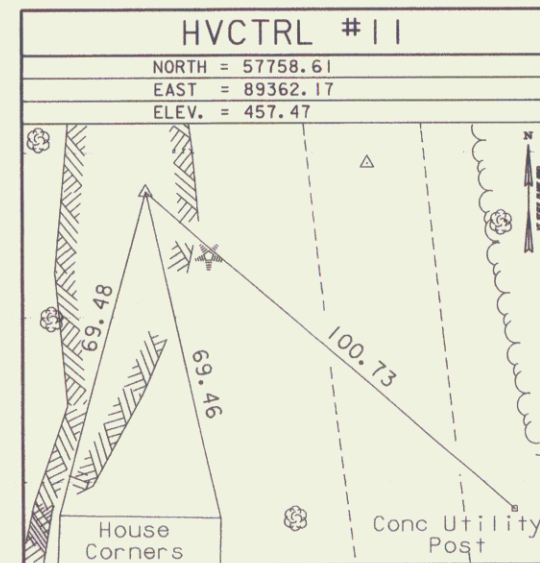
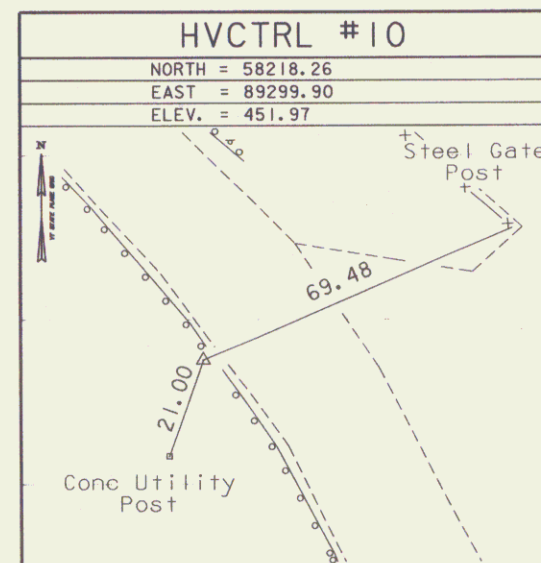
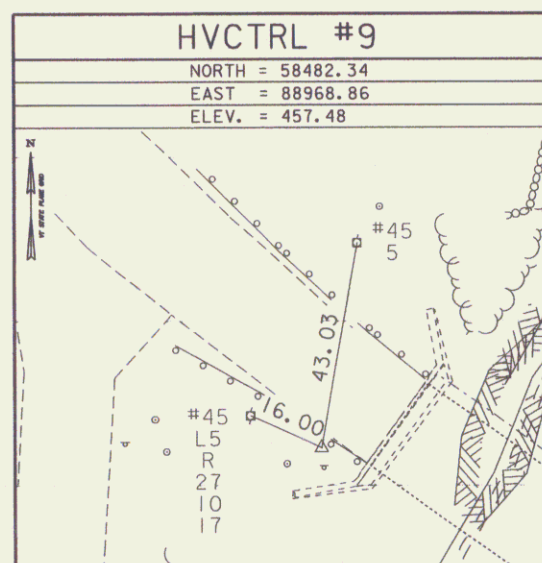
- DESCRIPTION PROVIDED BY VERMONT AGENCY OF TRANSPORTATION GEODETIC SURVEY UNIT
- TO ALLOW THE STATE PLANE COORDINATES TO FIT THE AGENCY DESIGN PLANE, SUBTRACT 600,000 FROM THE NORTHING AND SUBTRACT 1,500,000 FROM THE EASTING

TRAVERSE TIES



• MAIN TRAVERSE COMPLETED 09/04/91 by R. Moreau P.C. & L. Orvis & R. Bullock &

TRAVERSE TIES



| DATUM      |         |
|------------|---------|
| VERTICAL   | NAVD 83 |
| HORIZONTAL | NAD 88  |
| ADJUSTMENT | Compass |

|                 |                           |
|-----------------|---------------------------|
| PROJECT NAME:   | Moretown - Middlesex      |
| PROJECT NUMBER: | BRS 0284 (14)             |
| FILE NAME:      | 78f219/survey/xf219t1.dgn |
| PROJECT LEADER: |                           |
| DESIGNED BY:    |                           |
| PLOT DATE:      | 03-JUN-2008               |
| DRAWN BY:       | R. Bullock                |
| CHECKED BY:     |                           |
| ROW SHEET:      | 7 OF 20                   |