

STEEL BEAM GUARDRAIL
 STA 5+600.0 TO 5+642.8 LT
 STA 5+600.0 TO 5+612.4 RT
 STA 3+994.0 TO 4+005.4 RT (VT ROUTE 100/30)

MODIFIED ECCENTRIC LOADER TERMINAL
 STA 5+612.4 TO 5+623.8 RT
 STA 5+642.8 TO 5+654.2 LT
 STA 4+005.4 TO 4+016.8 RT (VT ROUTE 100/30)

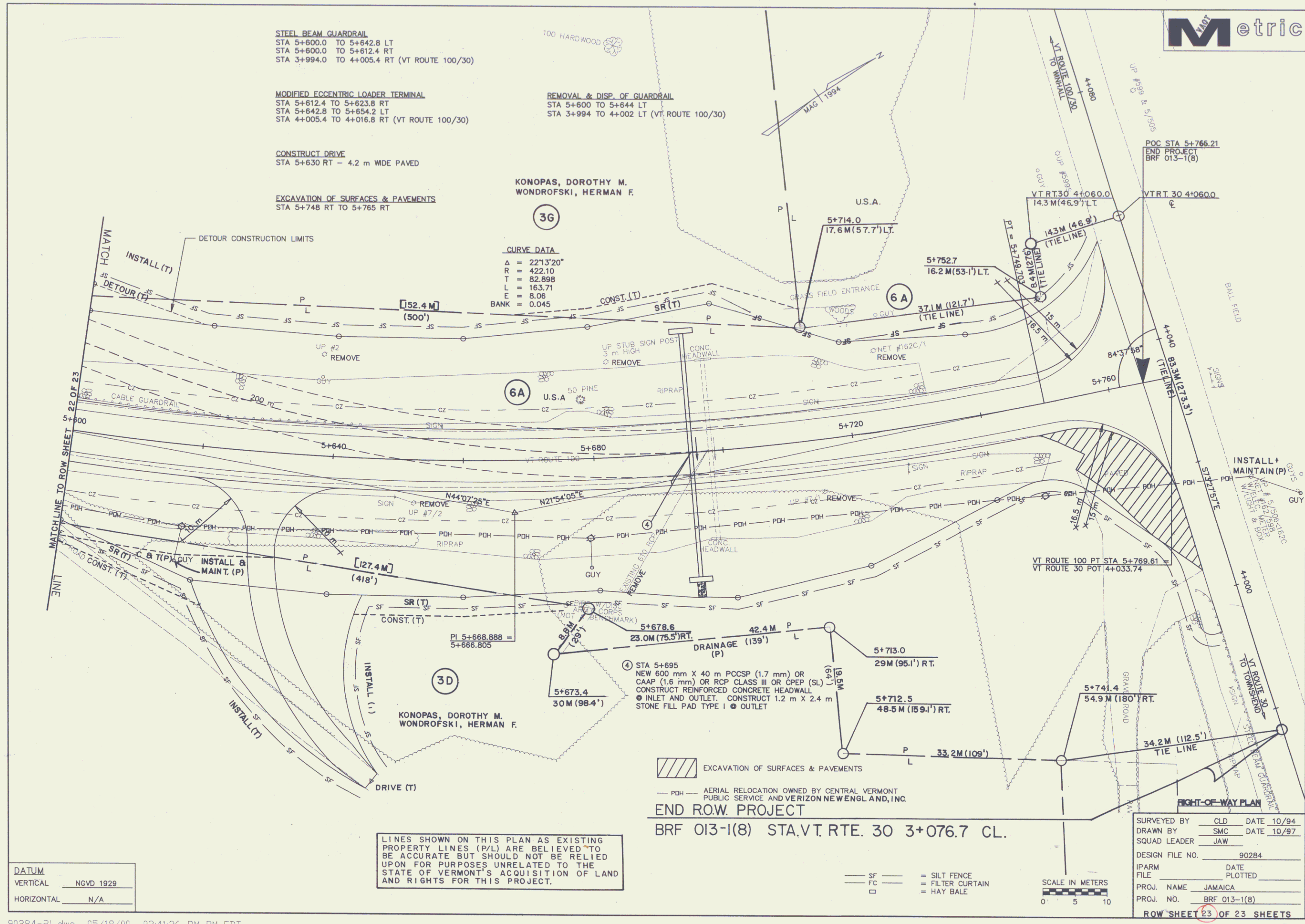
CONSTRUCT DRIVE
 STA 5+630 RT - 4.2 m WIDE PAVED

EXCAVATION OF SURFACES & PAVEMENTS
 STA 5+748 RT TO 5+765 RT

REMOVAL & DISP. OF GUARDRAIL
 STA 5+600 TO 5+644 LT
 STA 3+994 TO 4+002 LT (VT ROUTE 100/30)

KONOPAS, DOROTHY M.
 WONDROFSKI, HERMAN F.

CURVE DATA
 Δ = 22°13'20"
 R = 422.10
 T = 82.898
 L = 163.71
 E = 8.06
 BANK = 0.045



DATUM

VERTICAL	NGVD 1929
HORIZONTAL	N/A

LINES SHOWN ON THIS PLAN AS EXISTING PROPERTY LINES (P/L) ARE BELIEVED TO BE ACCURATE BUT SHOULD NOT BE RELIED UPON FOR PURPOSES UNRELATED TO THE STATE OF VERMONT'S ACQUISITION OF LAND AND RIGHTS FOR THIS PROJECT.

EXCAVATION OF SURFACES & PAVEMENTS

PDH - AERIAL RELOCATION OWNED BY CENTRAL VERMONT PUBLIC SERVICE AND VERIZON NEW ENGLAND, INC.

END ROW. PROJECT
 BR/ 013-1(8) STA. VT. RTE. 30 3+076.7 CL.

SF = SILT FENCE
 FC = FILTER CURTAIN
 □ = HAY BALE

SCALE IN METERS
 0 5 10

RIGHT-OF-WAY PLAN

SURVEYED BY	CLD	DATE	10/94
DRAWN BY	SMC	DATE	10/97
SQUAD LEADER	JAW		
DESIGN FILE NO.	90284		
IPARM FILE		DATE PLOTTED	
PROJ. NAME	JAMAICA		
PROJ. NO.	BR/ 013-1(8)		