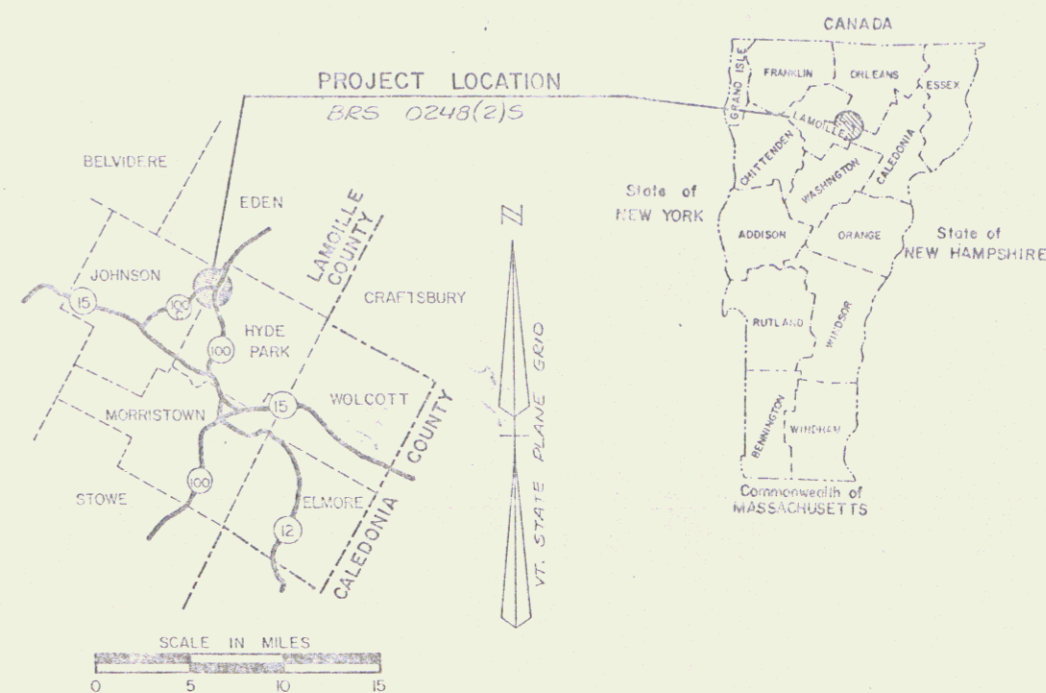


# STATE OF VERMONT AGENCY OF TRANSPORTATION



## PROPOSED IMPROVEMENT TOWNS OF JOHNSON & HYDE PARK COUNTY OF LAMOILLE VT. RTE. 100-C (F.A.S.)



### R.O.W. PLANS

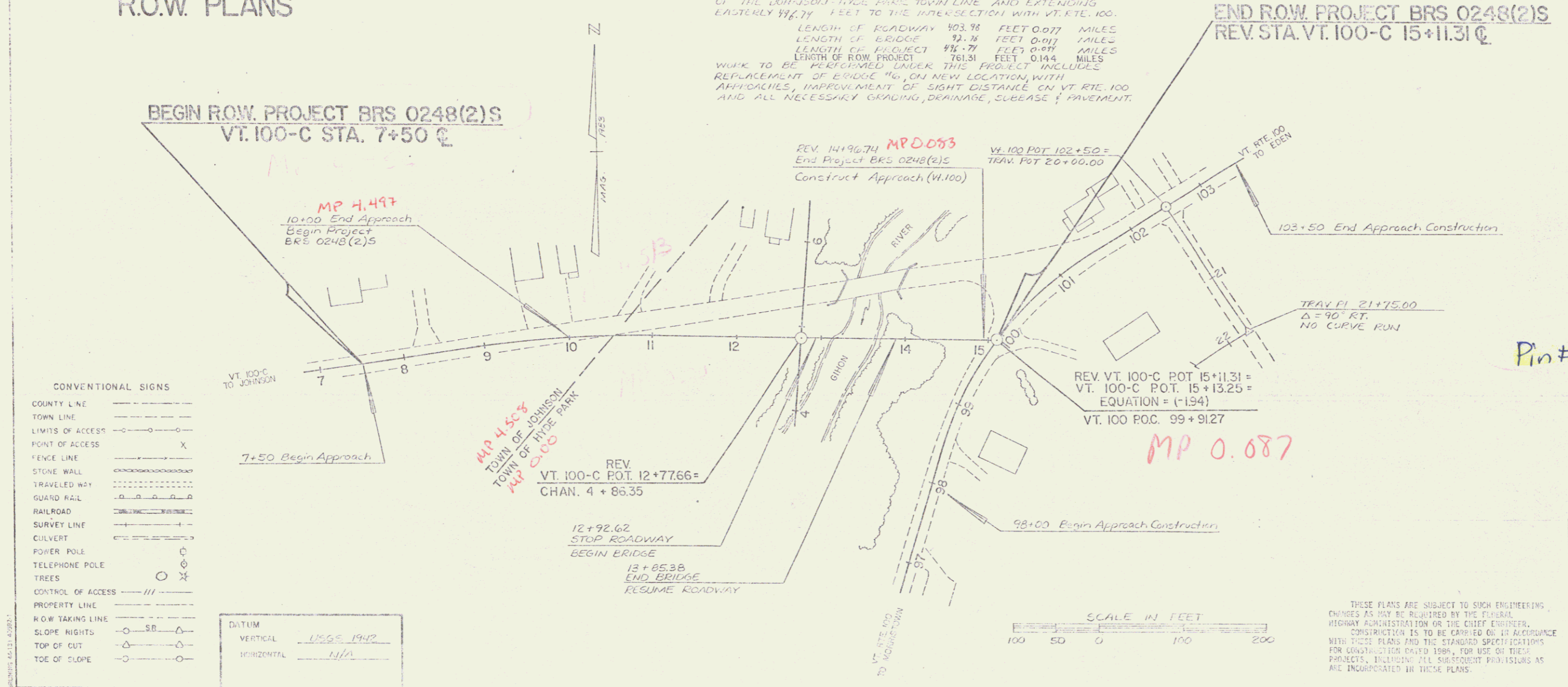
BEGINNING AT A POINT ON VT 100-C 57' FEET WESTERLY OF THE JOHNSON-HYDE PARK TOWN LINE AND EXTENDING EASTERLY 116.71 FEET TO THE INTERSECTION WITH VT. RTE. 100.

LENGTH OF ROADWAY 103.98 FEET 0.077 MILES  
 LENGTH OF BRIDGE 13.14 FEET 0.011 MILES  
 LENGTH OF PROJECT 116.71 FEET 0.077 MILES  
 LENGTH OF ROW PROJECT 761.31 FEET 0.144 MILES

WORK TO BE PERFORMED UNDER THIS PROJECT INCLUDES REPLACEMENT OF BRIDGE "6" ON NEW LOCATION WITH APPROPRIATE IMPROVEMENT OF SIGHT DISTANCE ON VT. RTE. 100 AND ALL NECESSARY GRADING, DRAINAGE, SUBBASE & PAVEMENT.

BEGIN ROW PROJECT BRS 0248(2)S  
VT. 100-C STA. 7+50.00

END ROW PROJECT BRS 0248(2)S  
REV. STA. VT. 100-C 15+11.31

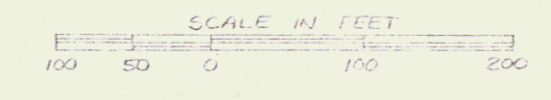


CONVENTIONAL SIGNS

COUNTY LINE	---
TOWN LINE	---
LIMITS OF ACCESS	---
POINT OF ACCESS	X
FENCE LINE	---
STONE WALL	---
TRAVELED WAY	---
GUARD RAIL	---
RAILROAD	---
SURVEY LINE	---
CULVERT	---
POWER POLE	○
TELEPHONE POLE	○
TREES	○ X
CONTROL OF ACCESS	---
PROPERTY LINE	---
ROW TAKING LINE	---
SLOPE RIGHTS	SB △
TOP OF CUT	△
TOE OF SLOPE	○

DATUM

VERTICAL	1985, 1940
HORIZONTAL	N/A



Pin# 78F207

OCT 11 1989

PROJECT PROCESSED UNDER  
SECONDARY ROAD PLAN

SUBMITTED BY ORDER OF THE STATE TRANSPORTATION BOARD

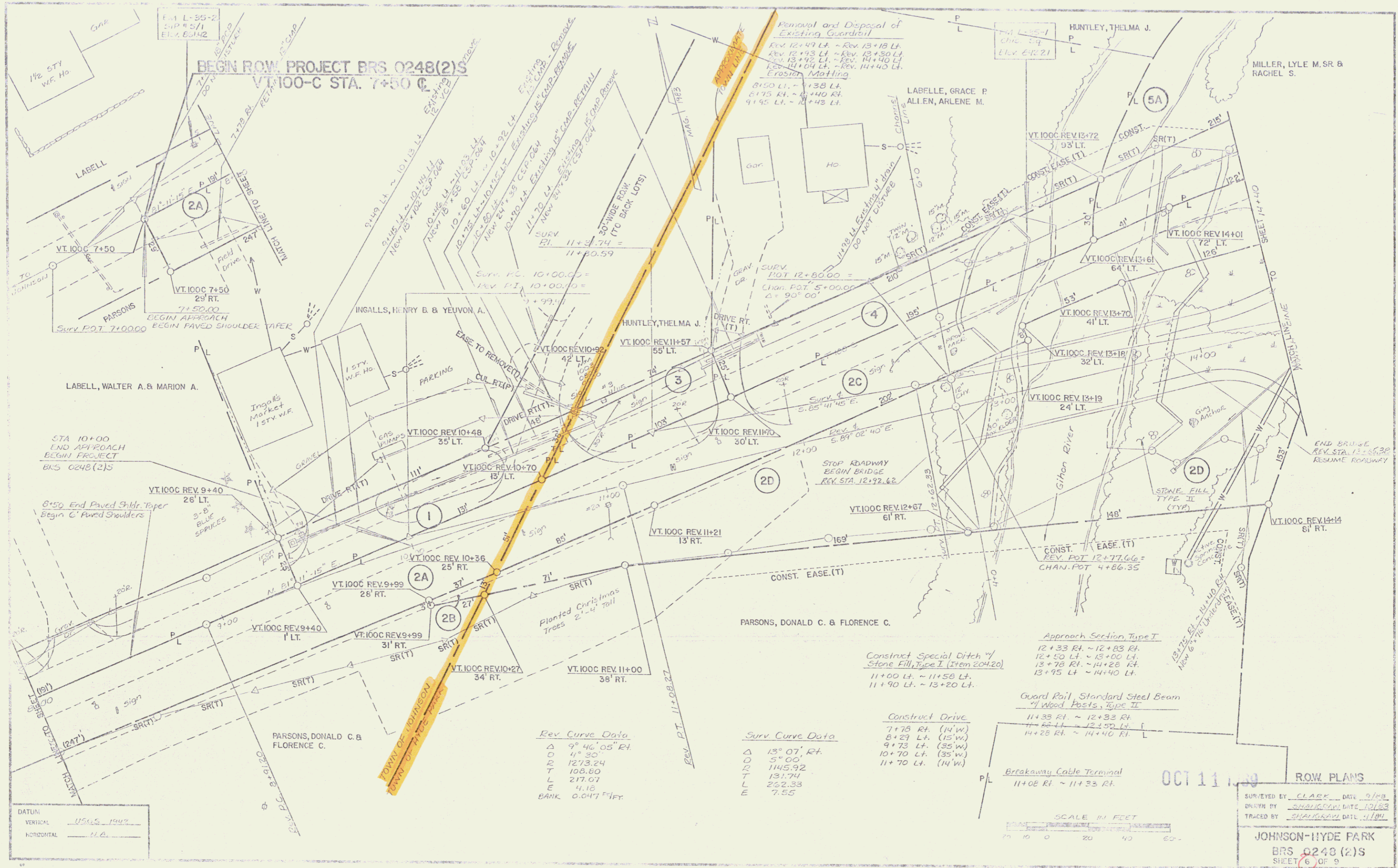
APPROVED *[Signature]* DATE *10/11/89*  
DIRECTOR OF ENGINEERING AND CONSTRUCTION

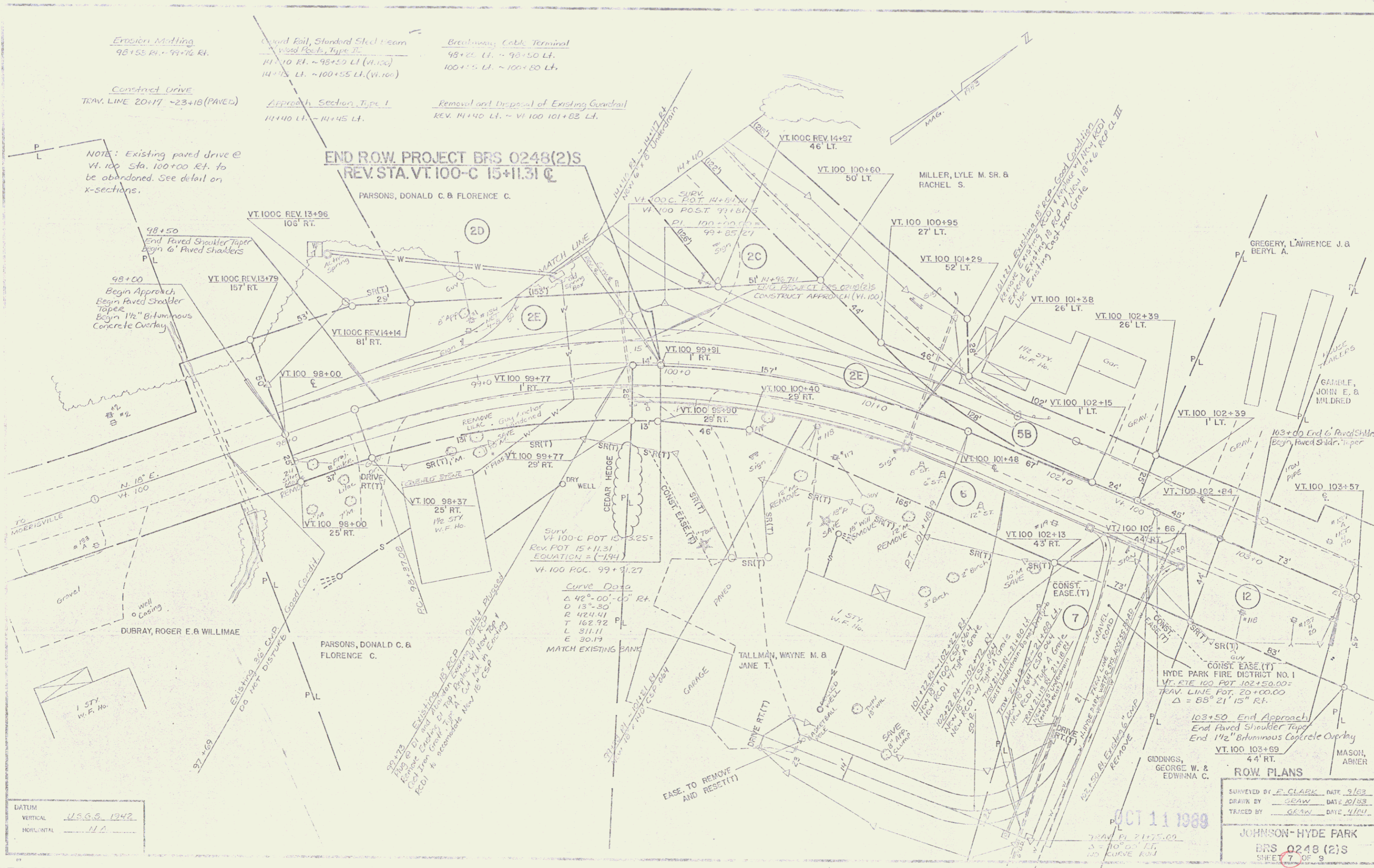
APPROVED *[Signature]* DATE *10/11/89*  
ACT. CHIEF PROPERTY ADMINISTRATION

JOHNSON-HYDE PARK  
PROJECT BRS # 0248(2)S

SHEET 1 OF 9 SHEETS  
D-10 S.F.S. 12/1/70

THESE PLANS ARE SUBJECT TO SUCH ENGINEERING CHANGES AS MAY BE REQUIRED BY THE TOWN, HIGHWAY ADMINISTRATION OR THE CHIEF ENGINEER. CONSTRUCTION IS TO BE CARRIED ON IN ACCORDANCE WITH THESE PLANS AND THE STANDARD SPECIFICATIONS FOR CONSTRUCTION DATED 1984, FOR USE ON THESE PROJECTS, INCLUDING ALL SUBSEQUENT PROVISIONS AS ARE INCORPORATED IN THESE PLANS.





DATUM  
VERTICAL U.S.G.S. 1942  
HORIZONTAL N.A.

OCT 11 1988