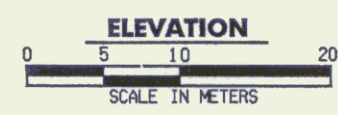
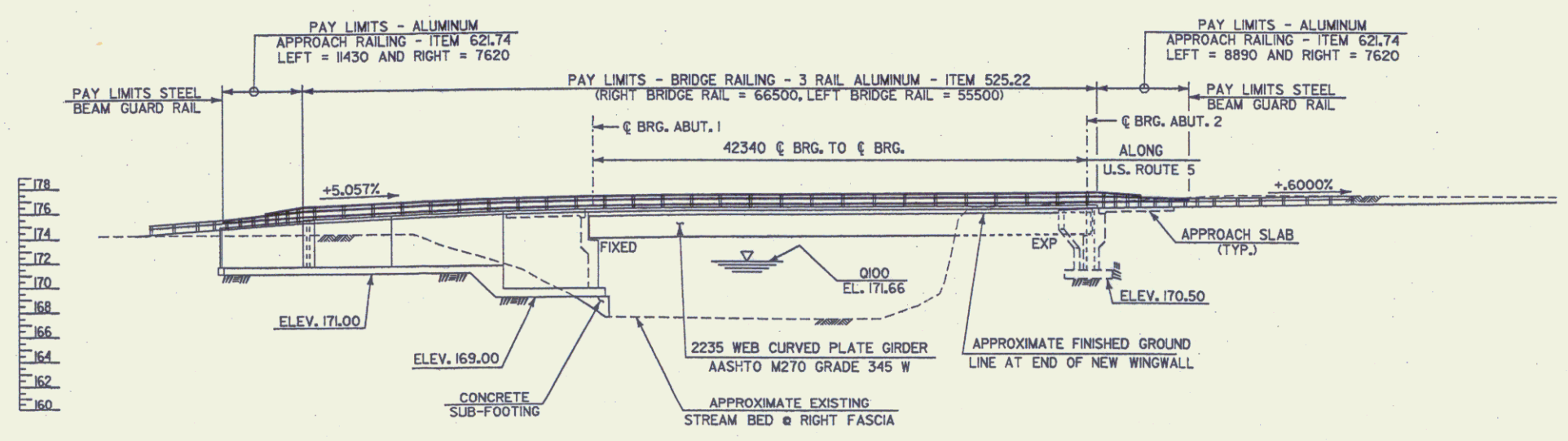
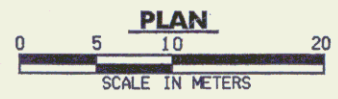
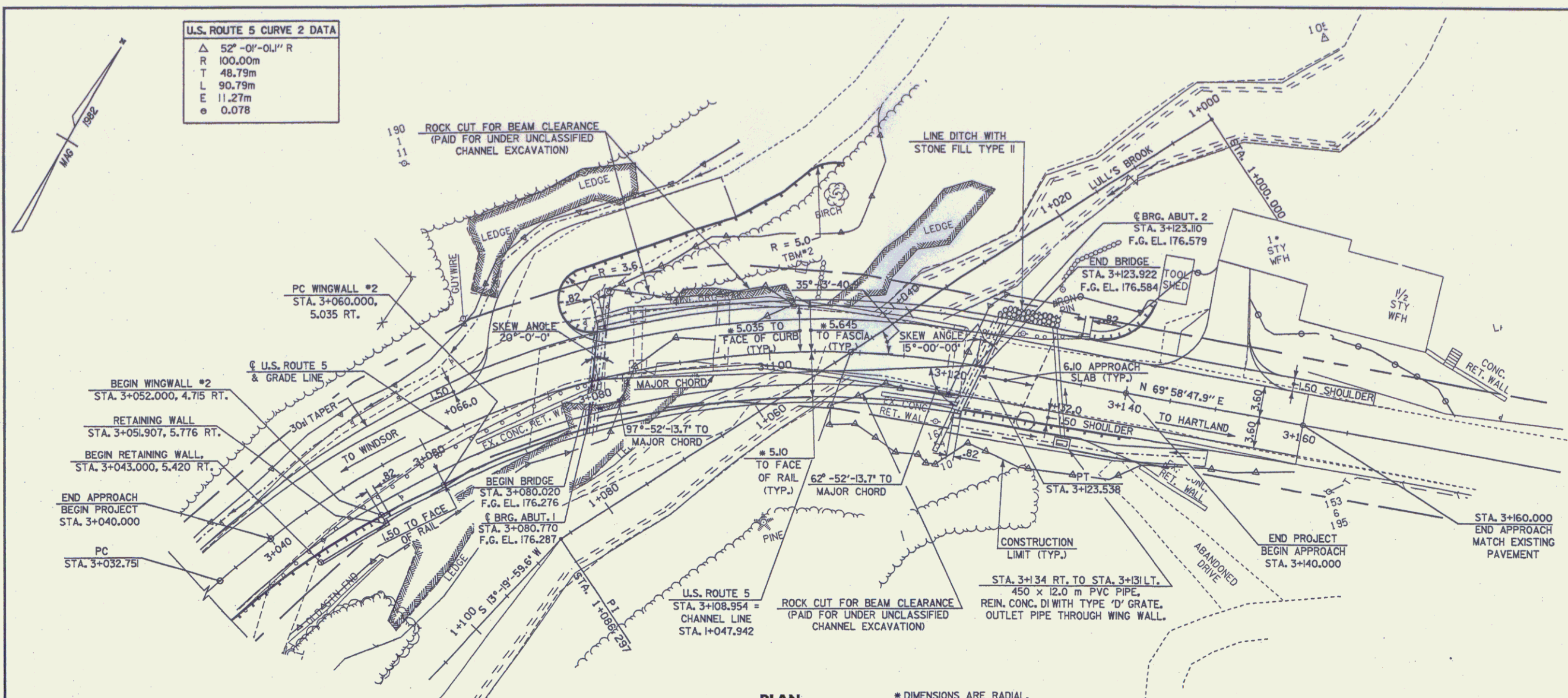




U.S. ROUTE 5 CURVE 2 DATA

Δ	52°-01'-01" R
R	100.00m
T	48.79m
L	90.79m
E	11.27m
e	0.078



- NOTES:**
1. FOR EXISTING STRUCTURE LAYOUT SEE HIGHWAY PLAN SHEET
 2. FOR TEMPORARY DETOUR LAYOUT SEE TRAFFIC CONTROL PLAN SHEETS.
 3. FOR REMOVAL AND RELOCATION OF EXISTING TOOL SHED SEE HIGHWAY PLAN SHEET

STATE OF VERMONT AGENCY OF TRANSPORTATION			
Town Of	HARTLAND	Bridge No.	60
Highway No.	U.S. ROUTE 5	Log Sta.	
		Surv. Sta.	
U.S. ROUTE 5 OVER LULLS BROOK			
BRIDGE PLAN AND ELEVATION			
Designed By	S. BAKI 12/98	Drawn By	W. GAYNOR 12/98
Checked By	S. BAKI	Date	12/98
		Bridge Design Supervisor	J. MECZKOWSKI Date 12/98
PROJECT	HARTLAND	PROJECT NO.	BRS No. 01131221
I.G.C. Info. M:\456201\VAOT Hartland\struct\zr204gpl.dgn			
R.O.W. SHEET 4 OF 11 SHEETS			