

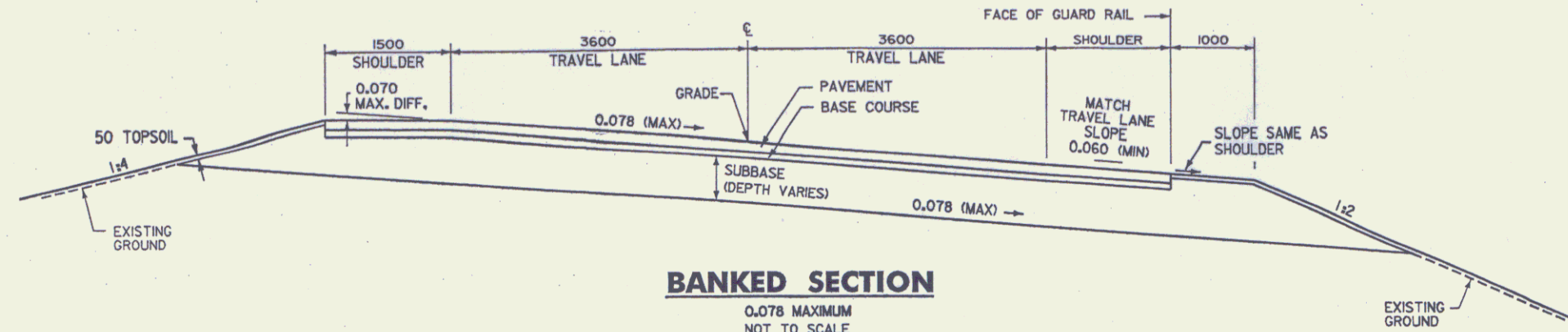
TYPICAL SECTIONS



115 BITUMINOUS CONCRETE PAVEMENT (50 TYPE III OVER 65 TYPE II)
 80 BASE COURSE OF BITUMINOUS CONCRETE PAVEMENT (TYPE I, ONE LIFT)
 SUBBASE OF CRUSHED GRAVEL (COARSE GRADED) - MODIFIED (DEPTH VARIES - SEE TRANSITION DETAILS, SHEETS 63 & 69)

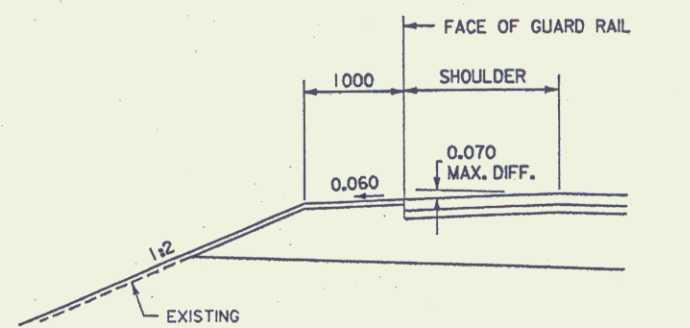
MATERIAL ITEM	THICKNESS TOLERANCE
PAVEMENT (TOTAL DEPTH)	+/- 5
SUBBASE	+/- 30

SHOULDERS: 115 BITUMINOUS CONCRETE PAVEMENT
 80 BASE COURSE OF BITUMINOUS CONCRETE PAVEMENT



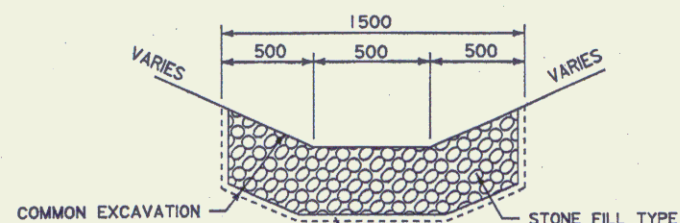
BANKED SECTION

0.078 MAXIMUM
 NOT TO SCALE



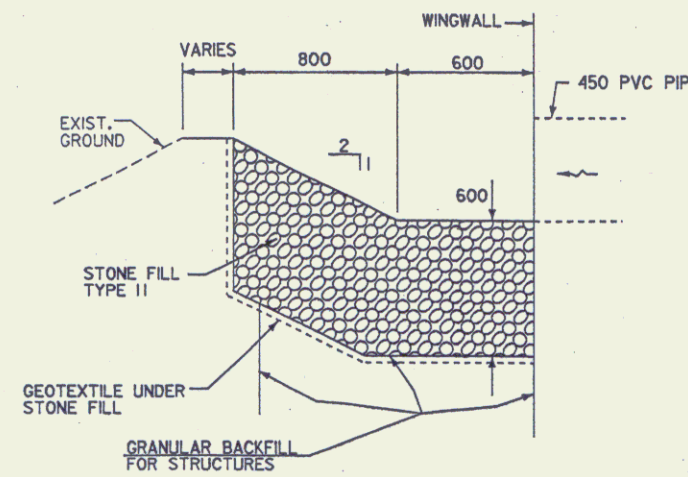
DETAIL OF GUARD RAIL ON HIGH SIDE OF BANKED SECTION

NOT TO SCALE



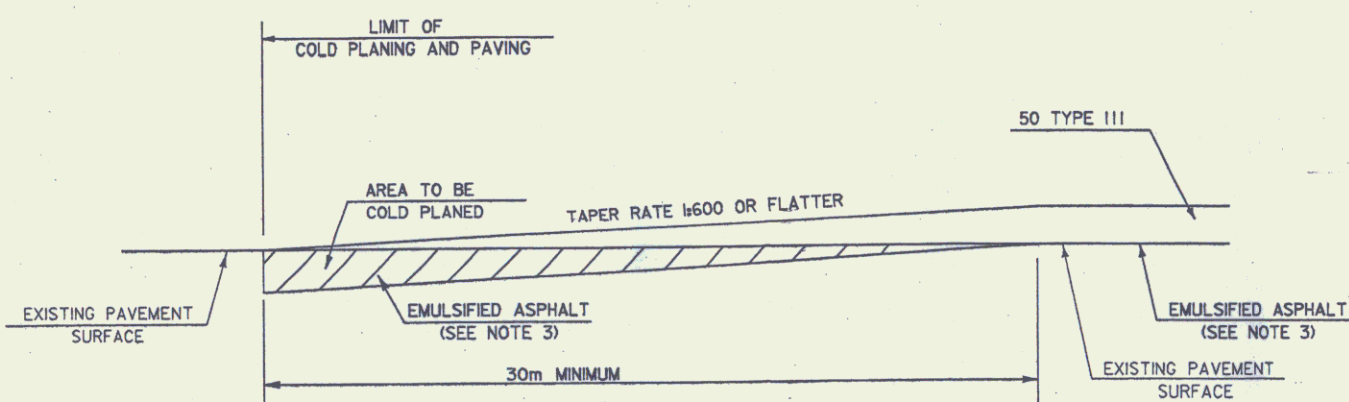
STONE FILLED DITCH DETAIL I

NOT TO SCALE



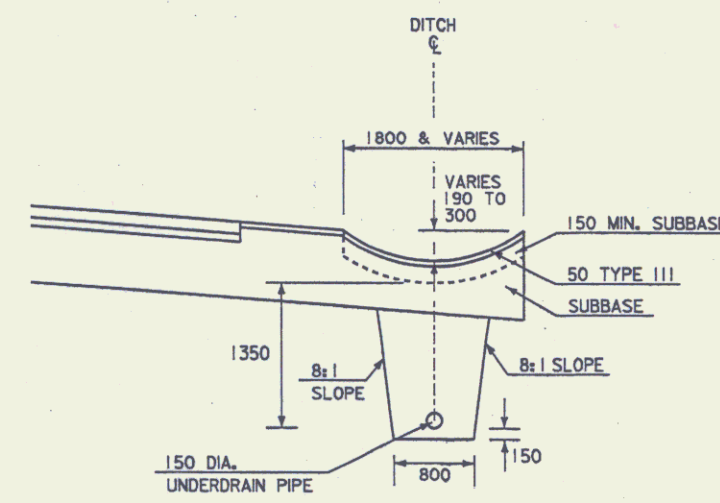
STONE FILLED DITCH DETAIL II

NOT TO SCALE



COLD PLANE DETAIL

NOT TO SCALE



PAVED GUTTER DETAIL

NOT TO SCALE

NOTES

- THE PAVEMENT WEARING COURSE SHALL BE TYPE II, BITUMINOUS CONCRETE PAVEMENT. ASPHALT CEMENT USED IN THE BITUMINOUS CONCRETE PAVEMENT SHALL BE PG 58-28.
- COLD PLANING TO BE COMPLETED ACCORDING TO TYPICAL OR AS NOTED OTHERWISE ON THE PLANS. ALL COLD PLANED AREAS SHALL BE TACKED WITH EMULSIFIED ASPHALT.
- EMULSIFIED ASPHALT TO BE APPLIED ON EXISTING PAVEMENT, BETWEEN ALL COURSES OF PAVEMENT AND ON COLD PLANED AREAS AT THE RATE OF 0.07 L/m² OR AS DIRECTED BY THE ENGINEER.
- PIPE INLET AND OUTLET AREAS, AND DITCH CLEANING THROUGHOUT THE PROJECT SHALL BE PERFORMED AT LOCATIONS AS INDICATED ON PLANS, OR AS DIRECTED BY THE ENGINEER. PAYMENT SHALL BE MADE UNDER APPLICABLE RENTAL ITEMS.
- SLOPE ROUNDING - ALL CUT SLOPE ROUNDINGS TO BE ROUNDED IN ACCORDANCE WITH STANDARD SHEET B-5M.
- MILEMARKERS DISTURBED BY CONSTRUCTION SHALL BE RESET AT THE DIRECTION OF THE ENGINEER WITH PAYMENT TO BE SUBSIDIARY TO OTHER ITEMS OF WORK.

RURAL AREAS - SEED MIXTURE				
% WT	kg/ha	NAME	PUR %	GERM %
37.1	26.0	CREEPING RED FESCUE	98	85
37.1	26.0	TALL FESCUE	95	90
5.7	4.0	RED TOP	95	90
14.4	10.0	BIRDSFOOT TREFOIL	98	85
5.7	4.0	ANNUAL RYE GRASS	95	85
100.0	70.0			

URBAN AREAS (LAWNS) - SEED MIXTURE				
% WT	kg/ha	NAME	PUR %	GERM %
42.5	38.0	CREEPING RED FESCUE	98	85
10.0	9.0	PERENNIAL RYE GRASS	95	90
42.5	38.0	KENTUCKY BLUE GRASS	85	85
5.0	5.0	ANNUAL RYE GRASS	95	85
100.0	90.0			

SEED MIXTURE:
 SHALL NOT HAVE A WEED CONTENT EXCEEDING 0.40% BY WEIGHT AND SHALL BE FREE OF ALL NOXIOUS SEED.

SEED:
 TO BE APPLIED PER SEEDING FORMULAS OR AS DIRECTED BY THE ENGINEER.

FERTILIZER:
 FORMULA 10-20-10, TO BE USED WITH SEED, APPLIED AT THE RATE OF 560 kg/ha. (HYDRO SEEDERS MAY USE 19-19-19 FORMULA)

AGRICULTURAL LIMESTONE:
 TO BE APPLIED AT THE RATE OF 4500kg/ha, OR AS DIRECTED BY THE ENGINEER.

HAY MULCH:
 TO BE PLACED ON EARTH SLOPES AT THE RATE OF 4500kg/ha, OR AS DIRECTED BY THE ENGINEER.

TOPSOIL:
 TO BE USED AS INDICATED ON THE PLANS, OR AS DIRECTED BY THE ENGINEER.

MARKER POSTS:
 TO BE PLACED AS INDICATED OR AS DIRECTED BY THE ENGINEER.

NOTE: ALL DIMENSIONS ON THIS SHEET IN MILLIMETERS EXCEPT WHERE OTHERWISE INDICATED

STATE OF VERMONT AGENCY OF TRANSPORTATION

Town Of	HARTLAND	Bridge No.	60
Highway No.	U.S. ROUTE 5	Log Sta.	
		Surv. Sta.	
U.S. ROUTE 5 OVER LULLS BROOK			
TYPICAL SECTIONS			
Designed By	J. McDUFFEE	Drawn By	R. REMY
Checked By	C. WOIDT	Date	5/95
		Bridge Design Supervisor	J. MIECZKOWSKI
		Date	DEC. 1998
PROJECT	HARTLAND	PROJECT NO.	BRS No. 013122
L.G.C. Info. pr\914562\z\z204frm.dgn			
R.Q.W. SHEET 2 OF 11 SHEETS			