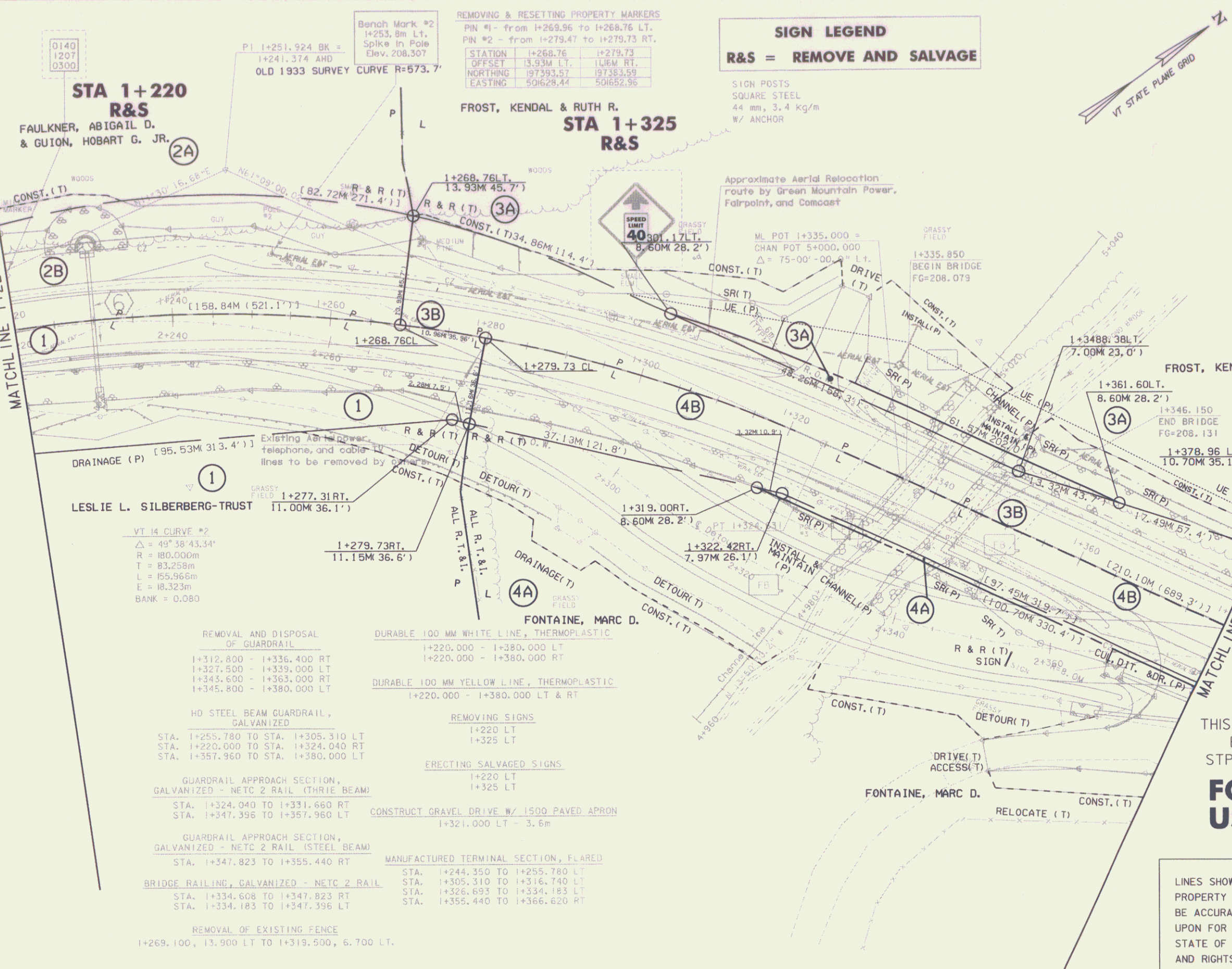
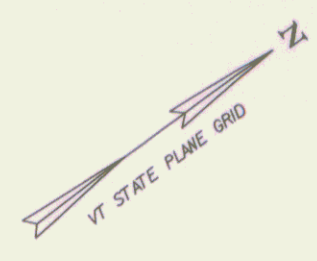


MATCHLINE I+220 TO R.O.W. SHEET 15 OF 17



SIGN LEGEND
R&S = REMOVE AND SALVAGE

SIGN POSTS
SQUARE STEEL
44 mm, 3.4 Kg/m
W/ ANCHOR



REMOVING & RESETTING PROPERTY MARKERS
PIN #1 - from I+269.96 to I+268.76 LT.
PIN #2 - from I+279.47 to I+279.73 RT.

| | | |
|----------|------------|------------|
| STATION | I+268.76 | I+279.73 |
| OFFSET | 13.93M LT. | 11.66M RT. |
| NORTHING | 197393.57 | 197383.59 |
| EASTING | 501628.44 | 501652.96 |

Approximate Aerial Relocation route by Green Mountain Power, Fairpoint, and Comcast

ML POT I+335.000 =
CHAN POT 5+000.000
 $\Delta = 75-00'-00" = 1:1$

STA 1+220 R&S
FAULKNER, ABIGAIL D. & GUION, HOBART G. JR.

STA 1+325 R&S
FROST, KENDAL & RUTH R.

LESLIE L. SILBERBERG-TRUST
I+277.31RT.
11.00M 36.1'

FONTAINE, MARC D.

FROST, KENDAL & RUTH R.
I+361.60LT.
8.60M 28.2'

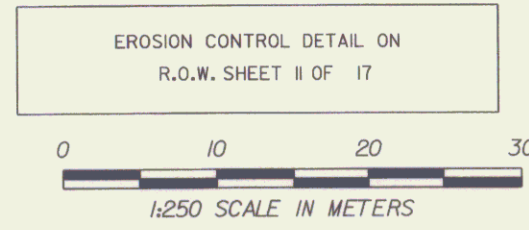
VT 14 CURVE #2
 $\Delta = 49^{\circ}38'43.34"$
R = 180.000m
T = 83.258m
L = 155.966m
E = 18.323m
BANK = 0.080

- REMOVAL AND DISPOSAL OF GUARDRAIL
 - I+312.800 - I+336.400 RT
 - I+327.500 - I+339.000 LT
 - I+343.600 - I+363.000 RT
 - I+345.800 - I+380.000 LT
- HD STEEL BEAM GUARDRAIL, GALVANIZED
 - STA. I+255.780 TO STA. I+305.310 LT
 - STA. I+220.000 TO STA. I+324.040 RT
 - STA. I+357.960 TO STA. I+380.000 LT
- GUARDRAIL APPROACH SECTION, GALVANIZED - NETC 2 RAIL (THREE BEAM)
 - STA. I+324.040 TO I+331.660 RT
 - STA. I+347.396 TO I+357.960 LT
- GUARDRAIL APPROACH SECTION, GALVANIZED - NETC 2 RAIL (STEEL BEAM)
 - STA. I+347.823 TO I+355.440 RT
- BRIDGE RAILING, GALVANIZED - NETC 2 RAIL
 - STA. I+334.608 TO I+347.823 RT
 - STA. I+334.183 TO I+347.396 LT
- REMOVAL OF EXISTING FENCE
 - I+269.100, I3.900 LT TO I+319.500, 6.700 LT.

- DURABLE 100 MM WHITE LINE, THERMOPLASTIC
 - I+220.000 - I+380.000 LT
 - I+220.000 - I+380.000 RT
- DURABLE 100 MM YELLOW LINE, THERMOPLASTIC
 - I+220.000 - I+380.000 LT & RT
- REMOVING SIGNS
 - I+220 LT
 - I+325 LT
- ERECTING SALVAGED SIGNS
 - I+220 LT
 - I+325 LT
- CONSTRUCT GRAVEL DRIVE W/ 1500 PAVED APRON
 - I+321.000 LT - 3.6m
- MANUFACTURED TERMINAL SECTION, FLARED
 - STA. I+244.350 TO I+255.780 LT
 - STA. I+305.310 TO I+316.740 LT
 - STA. I+326.893 TO I+334.183 LT
 - STA. I+355.440 TO I+366.620 RT

THIS PROJECT IS A/K/A EAST MONTPELIER STP FECC F 037-2(4S)
FOR R.O.W. USE ONLY

LINES SHOWN ON THIS PLAN AS EXISTING PROPERTY LINES (P/L) ARE BELIEVED TO BE ACCURATE BUT SHOULD NOT BE RELIED UPON FOR PURPOSES UNRELATED TO THE STATE OF VERMONT'S ACQUISITION OF LAND AND RIGHTS FOR THIS PROJECT.



6 STA I+230.0 LT. - RT.
NEW 450 X 18M OPTION PIPE W/ NEW CONCRETE HEADWALL @ INLET
NEW INLET DITCH W/ STONE FILL, TYPE 1
NEW 1.0 X 2.0 STONE PAD @ OUTLET - STONE FILL, TYPE 1

| | |
|-------------------------|---|
| LAYOUT SHEET #2 | |
| PROJECT NAME: | EAST MONTPELIER |
| PROJECT NUMBER: | STP 037-2(9) |
| FILE NAME: | T84200\str\sf200bdr.dgn |
| PROJECT LEADER: | K. HIGGINS |
| DESIGNED BY: | J. LACROIX |
| R.O.W. SHEET (16) OF 17 | PLOT DATE: 24-JUN-2009 DRAWN BY: R. PELLET CHECKED BY: J. LACROIX SHEET 41 OF 65 |