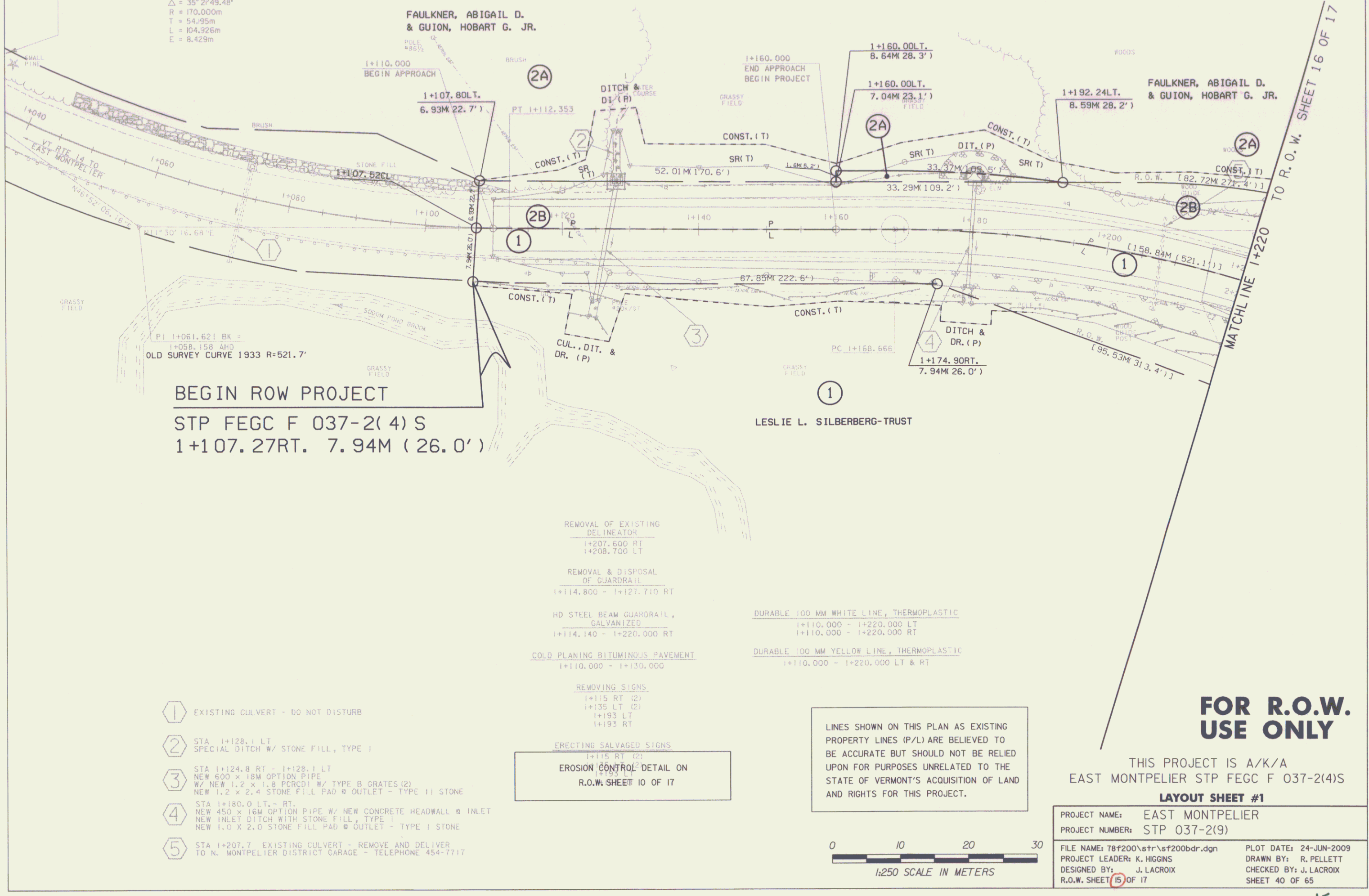
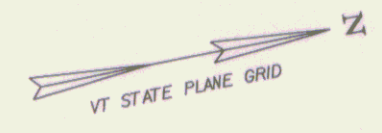


Bench Mark #1  
1+028.6m Lt.  
Spoke In Root  
Elev. 208.550

VERT. CURVE #1  
Δ = 35° 2' 49.48"  
R = 170.000m  
T = 54.95m  
L = 104.926m  
E = 8.429m



**BEGIN ROW PROJECT**  
STP FEFC F 037-2(4) S  
1+107.27RT. 7.94M (26.0')

- REMOVAL OF EXISTING DELINEATOR  
1+207.600 RT  
1+208.700 LT
- REMOVAL & DISPOSAL OF GUARDRAIL  
1+114.800 - 1+127.710 RT
- HD STEEL BEAM GUARDRAIL, GALVANIZED  
1+114.140 - 1+220.000 RT
- COLD PLANING BITUMINOUS PAVEMENT  
1+110.000 - 1+130.000

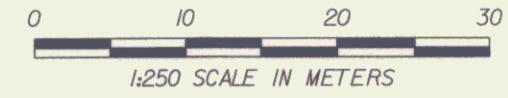
- DURABLE 100 MM WHITE LINE, THERMOPLASTIC  
1+110.000 - 1+220.000 LT  
1+110.000 - 1+220.000 RT
- DURABLE 100 MM YELLOW LINE, THERMOPLASTIC  
1+110.000 - 1+220.000 LT & RT

- ① EXISTING CULVERT - DO NOT DISTURB
- ② STA 1+128.1 LT SPECIAL DITCH W/ STONE FILL, TYPE 1
- ③ STA 1+124.8 RT - 1+128.1 LT NEW 600 x 18M OPTION PIPE W/ NEW 1.2 x 1.8 PERCDI W/ TYPE B GRATES (2) NEW 1.2 x 2.4 STONE FILL PAD @ OUTLET - TYPE 1 STONE
- ④ STA 1+180.0 LT - RT NEW 450 x 16M OPTION PIPE W/ NEW CONCRETE HEADWALL @ INLET NEW INLET DITCH WITH STONE FILL, TYPE 1 NEW 1.0 x 2.0 STONE FILL PAD @ OUTLET - TYPE 1 STONE
- ⑤ STA 1+207.7 EXISTING CULVERT - REMOVE AND DELIVER TO N. MONTPELIER DISTRICT GARAGE - TELEPHONE 454-7717

ERECTING SALVAGED SIGNS  
1+115 RT (2)  
1+135 LT (2)  
1+193 LT  
1+193 RT

**EROSION CONTROL DETAIL ON R.O.W. SHEET 10 OF 17**

LINES SHOWN ON THIS PLAN AS EXISTING PROPERTY LINES (P/L) ARE BELIEVED TO BE ACCURATE BUT SHOULD NOT BE RELIED UPON FOR PURPOSES UNRELATED TO THE STATE OF VERMONT'S ACQUISITION OF LAND AND RIGHTS FOR THIS PROJECT.



**FOR R.O.W. USE ONLY**

THIS PROJECT IS A/K/A  
EAST MONTPELIER STP FEFC F 037-2(4)S

LAYOUT SHEET #1

PROJECT NAME: EAST MONTPELIER	PLOT DATE: 24-JUN-2009
PROJECT NUMBER: STP 037-2(9)	DRAWN BY: R. PELLETT
FILE NAME: T8f200\str\sf200bdr.dgn	CHECKED BY: J. LACROIX
PROJECT LEADER: K. HIGGINS	SHEET 40 OF 65
DESIGNED BY: J. LACROIX	
R.O.W. SHEET 15 OF 17	