

GPS CONTROL POINTS

HVCTRL # 1

Standard Disk Stamped
Banfield

NORTH = 194969.122
EAST = 501909.763
ELEV. =

TO REACH FROM THE JUNCTION OF U.S. ROUTE 2 AND VERMONT ROUTE 14 SOUTH IN THE VILLAGE OF EAST MONTPELIER, PROCEED SOUTH ON ROUTE 14 FOR 1.2 MI (1.9 KM) TO A DIRT ROAD ON THE LEFT. TURN LEFT ONTO DIRT ROAD AND CONTINUE FOR 0.55 MI (0.89 KM) TO A T-INTERSECTION WITH THE ROAD, TURN LEFT AT INTERSECTION (COUNTRY CLUB ROAD) AND CONTINUE FOR 0.35 MI (0.56 KM) TO A POINT WHERE THE MAIN DIRT ROAD TURNS SHARPLY RIGHT, FROM THIS POINT TURN SHARPLY LEFT ON A LESSER DIRT ROAD FOR 0.05 MI (0.08 KM) TO A DIRT DRIVE RIGHT, TURN RIGHT ONTO DRIVE, TO A TWO STORY HOUSE, AND THE SITE OF THE MARK. THE MARK IS LOCATED ON THE NORTHEAST SIDE OF THE HOUSE. THE MARK IS A STATE OF VERMONT SURVEY DISK SET IN THE TOP OF A 6X6 INCH SQUARE CONCRETE MONUMENT, FLUSH WITH THE GROUND SURFACE. IT IS LOCATED 62.5 FT (19.1 M) NORTH OF THE NORTHEAST CORNER OF HOUSE / ATTACHED GARAGE, 54 FT (16.5 M) NORTHEAST OF A QUADRUPLE WHITE BIRCH, 45.5 FT (13.9 M) NORTHWEST OF A 36 INCH OAK TREE, 17.5 FT (5.3 M) EAST OF THE SOUTHEAST CORNER OF A LARGE EXPOSED BOULDER, 10 FT (3.0 M) NORTHEAST OF THE SOUTHEAST CORNER OF A FLOWER BED, AND 0.8 FT (24.4 CM) SOUTH OF A FIBERGLASS WITNESS POST. OWNERSHIP IS MR. AND MRS. EDWARD BANFIELD.

* Description provided by Vermont Agency of Transportation Geodetic Survey Unit

HVCTRL # 2

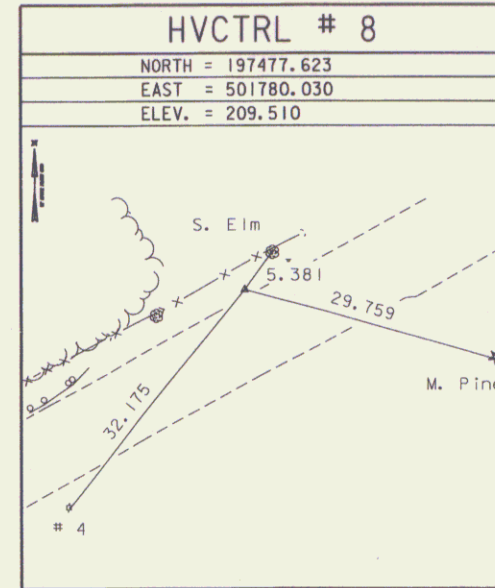
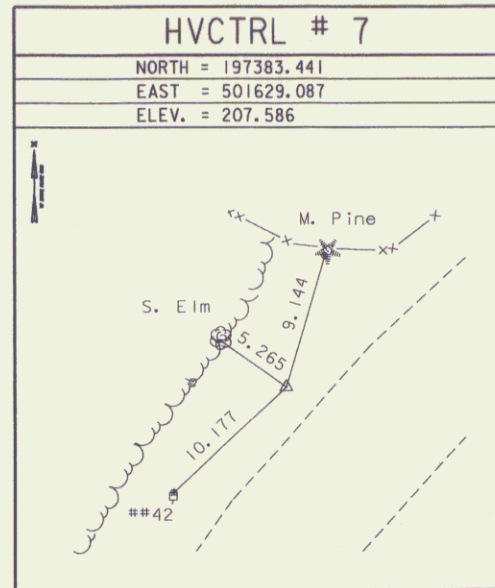
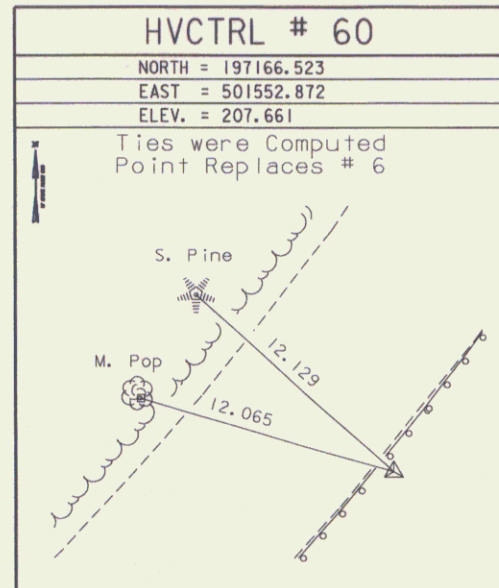
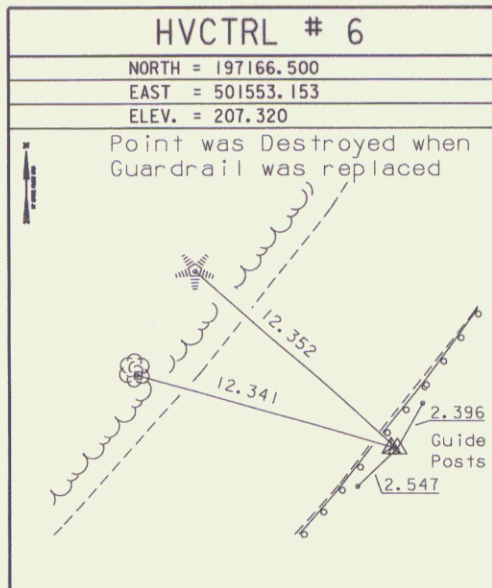
Standard Disk Stamped

Donnelly
NORTH = 198020.431
EAST = 502632.306
ELEV. =

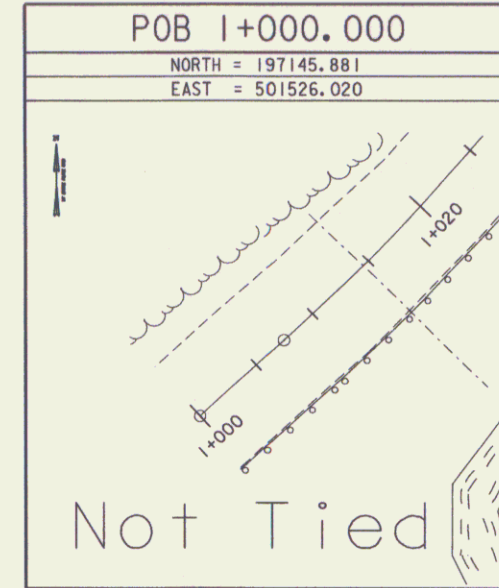
TO REACH FROM THE NORTH INTERSECTION OF U.S. ROUTE 2 AND VT ROUTE 14 PROCEED NORTHERLY ALONG ROUTE 14 FOR 1.2 MI (1.9 KM) TO A GRAVEL DRIVE ON THE RIGHT. PROCEED UP THE GRAVEL DRIVE FOR 0.15 MI (0.24 KM) TO A PAVED DRIVE ON THE LEFT AND A YELLOW RANCH WITH A ONE CAR GARAGE. PROCEED UP THE PAVED DRIVE TO THE YELLOW RANCH. THE MARK IS 28.8 M (94.5 FT) NORTH NORTHEAST OF AN IRON PIPE SEPERATING THE TWO ADJACENT PROPERTIES, 26.5 M (86.9 FT) NORTHWEST OF THE SOUTHWEST CORNER OF THE ADJACENT WHITE RANCH, 24.7 M (81.0 FT) WEST OF THE NORTHWEST CORNER OF THE ADJACENT WHITE RANCH, 20.2 M (66.3 FT) EAST NORTHEAST OF THE SOUTHEAST CORNER OF THE YELLOW GARAGE, AND 13.0 M (42.7 FT) EAST OF THE NORTHEAST CORNER OF THE YELLOW GARAGE.



TRAVERSE TIES

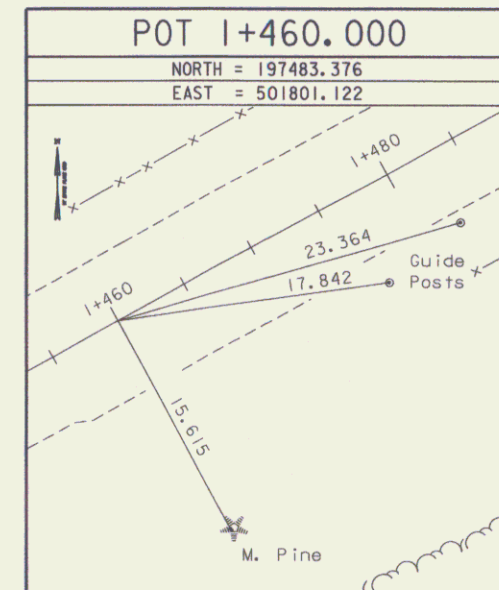
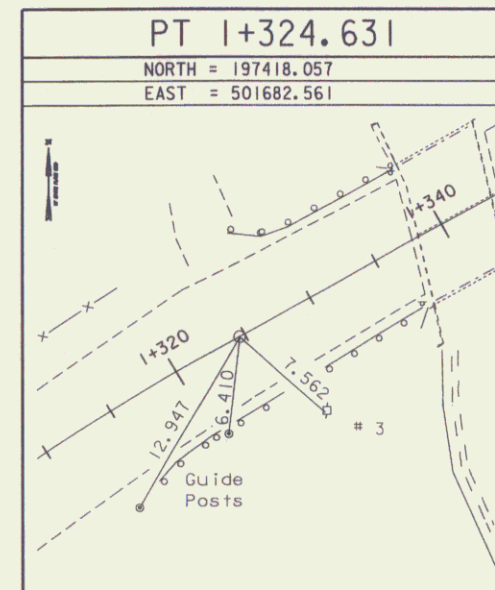
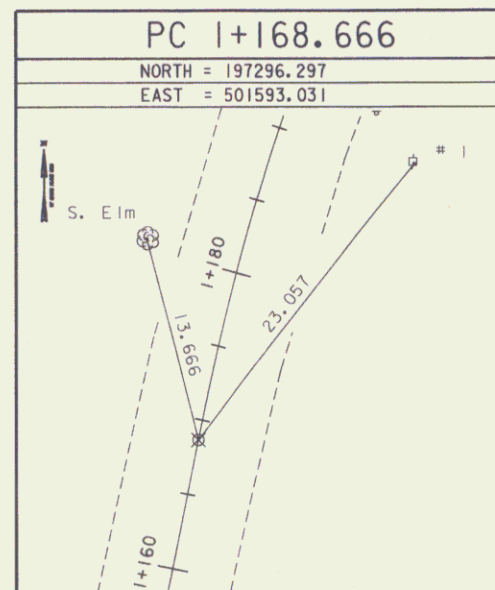
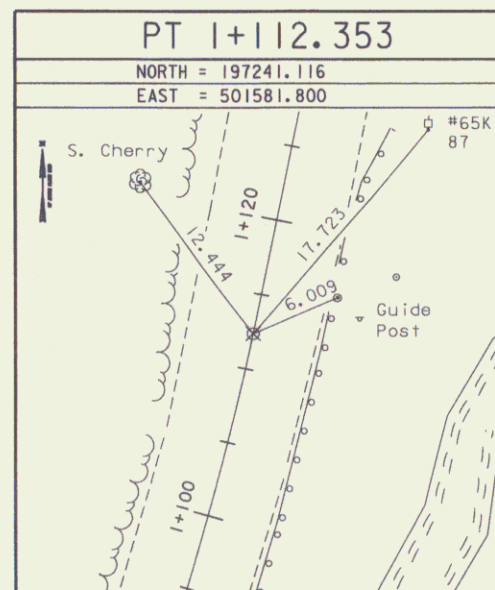
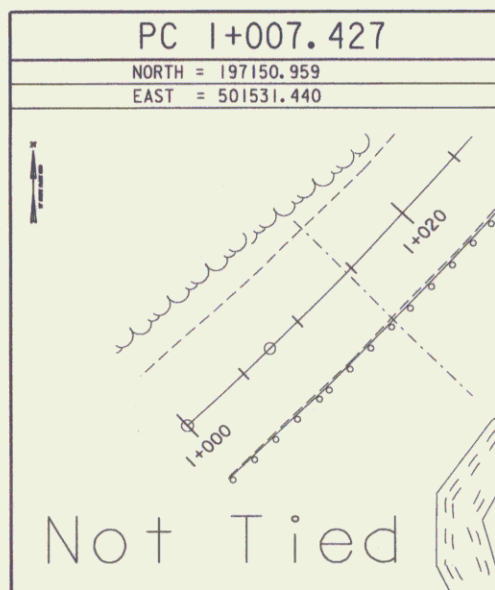


ALIGNMENT TIES



* Main Traverse Completed 01/04/1996 by R. Gilman P. C. & T. Morse

ALIGNMENT TIES



* Alignment Staked 05/23/2003 by R. Gilman P. C. & P. Winters

DATUM	
VERTICAL	NAVD 88
HORIZONTAL	NAD 83 (92)
ADJUSTMENT	Compass

PROJECT NAME: East Montpelier
PROJECT NUMBER: STP FECC F 037-2(4)S

FILE NAME: 78f200/survey/xf200t1.dgn
PROJECT LEADER:
DESIGNED BY:
PLOT DATE: 24-JUN-2009
DRAWN BY: R. Bullock
CHECKED BY:
R.O.W. SHEET 5 OF 17 SHEETS

THIS PROJECT IS A/K/A
EAST MONTPELIER STP 037-2(9)