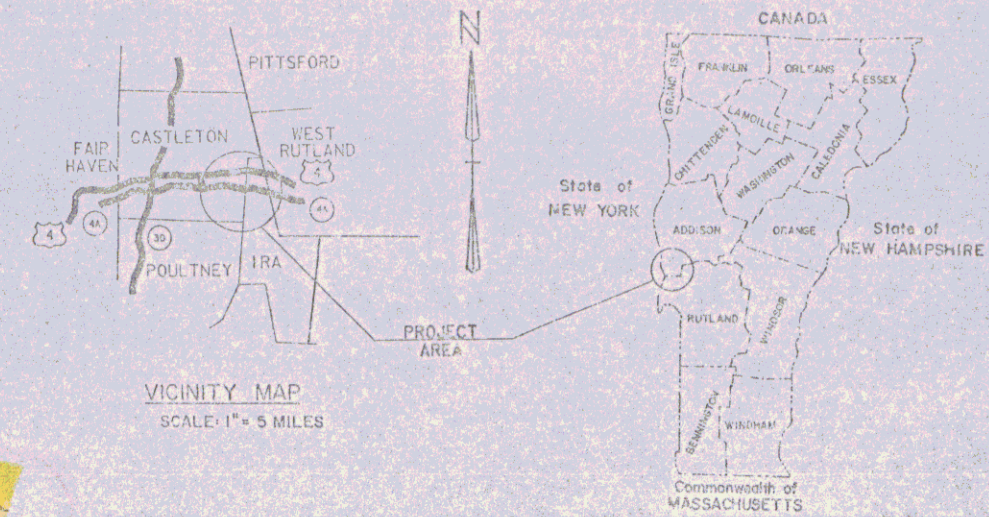


STATE OF VERMONT
AGENCY OF TRANSPORTATION



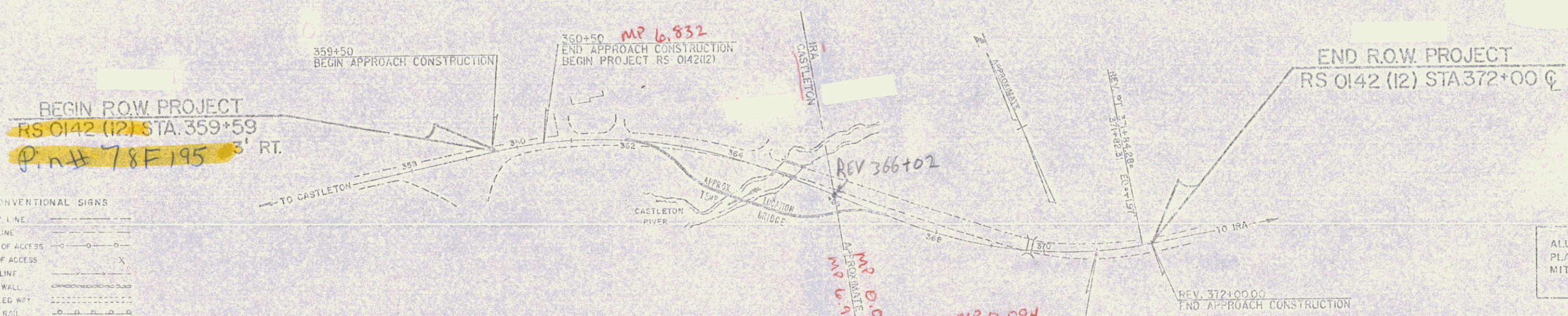
PROPOSED IMPROVEMENT
TOWNS OF CASTLETON & IRA
COUNTY OF RUTLAND
VT. ROUTE 4-A (F.A.S.)
FAIR HAVEN - RUTLAND ROAD



R.O.W. PLANS

BEGINNING AT A POINT APPROXIMATELY 0.104 MILES WESTERLY OF THE
CASTLETON - IRA TOWN LINE AND EXTENDING EASTERLY 0.199 MILES.

LENGTH OF ROADWAY		FEET=	MILES
LENGTH OF BRIDGE		FEET=	MILES
LENGTH OF PROJECT	1350.00	FEET=	0.199
LENGTH OF ROW PROJECT	1242.57	FEET=	0.235



CONVENTIONAL SIGNS

COUNTY LINE	---
TOWN LINE	---
LIMITS OF ACCESS	---
POINT OF ACCESS	X
FENCE LINE	---
STONE WALL	---
TRAVELED WAY	---
GUARD RAIL	---
RAILROAD	---
SURVEY LINE	---
CULVERT	---
POWER POLE	---
TELEPHONE POLE	---
TREES	---
CONTROL OF ACCESS	---
PROPERTY LINE	---
ROW TAKING LINE	---
SLOPE RIGHTS	---
TOP OF CUT	---
TOE OF SLOPE	---

DATUM

VERTICAL	NGVD 1929
HORIZONTAL	N/A



ALL DRIVES AS INDICATED ON
PLANS ARE SUBJECT TO PER-
MITS PURSUANT TO TITLE 19,
SECTION 43, V.S.A.

THESE PLANS ARE SUBJECT TO SUCH ENGINEERING
CHANGES AS MAY BE REQUIRED BY THE FEDERAL HIGHWAY
ADMINISTRATION OR THE CHIEF ENGINEER.
CONSTRUCTION IS TO BE CARRIED ON IN ACCORDANCE
WITH THESE PLANS AND THE STANDARD SPECIFICATIONS
FOR CONSTRUCTION DATED 1966, INCLUDING ALL
SUBSEQUENT REVISIONS AND SUCH REVISED SPECIFICATIONS
AND SPECIAL PROVISIONS AS ARE INCORPORATED IN THESE
PLANS.

SUBMITTED BY CHIEF OF THE STATE TRANSPORTATION BOARD

APPROVED: *[Signature]* DATE: *8/27/90*
CHIEF ENGINEER

APPROVED: *[Signature]* DATE: *8-27-90*
ACTING CHIEF PROPERTY ADMINISTRATION

CASTLETON - IRA
RS 0142 (12)

SHEET 1 OF 10

8/1/90

STATE OF VERMONT
AGENCY OF TRANSPORTATION
RIGHT-OF-WAY PLANS
DETAIL SHEET

TABLE OF PROJECT PROPERTY ACQUISITION

PARCEL NO.	GRANTOR	SHEET NO.	BEGINNING STATION	ENDING STATION	TAKING	REM.	RIGHTS	TITLE TAKEN	DATE	TOWN OR CITY RECORDED	BK.	PG.	REMARKS
1A	BIRD MOUNTAIN RESORT CORP.	8,9	REV. 380 + 50 RT.	REV. 366 + 26 RT.	0.25 A±		CONST. EASE. (T) SLOPE (T) SLOPE (T) SLOPE (T) SLOPE (P) SLOPE (P) EASE. (T) DRAINAGE (P)	WD		CASTLETON			(2415) SF±
			359 + 59 RT.	REV. 362 + 46 RT.									(875) SF±
			REV. 359 + 80 RT.	REV. 360 + 85 RT.									(750) SF±
			REV. 361 + 20 RT.	REV. 361 + 90 RT.									(1680) SF±
			REV. 362 + 72 RT.	REV. 363 + 90 RT.									(2250) SF±
			REV. 363 + 50 RT.	REV. 364 + 34 RT.									TEMP BRIDGE & DETOUR
			REV. 365 + 20 RT.	REV. 366 + 16 RT.									
REV. 362 + 43 RT.	REV. 366 + 40 RT.												
REV. 360 + 51 RT.													
1B		8,9	359 + 50 RT.	REV. 366 + 12 RT.	0.30 A±		ALL R.T. & L.						VI. RTE. 4A
1C		9,10	REV. 366 + 12 RT.	REV. 370 + 98 RT.	0.29 A±		SLOPE (T) CONST. EASE. (T) CULVERT (P) CULVERT (P) SLOPE (T)	WD		IRA			(2175) SF±
			REV. 366 + 26 RT.	REV. 369 + 70 RT.									
			REV. 366 + 47 RT.	372 + 00 RT.									
			REV. 368 + 67 RT.										
			REV. 368 + 73 RT.	REV. 371 + 60 RT.									
1D		9,10	REV. 365 + 90 LT.	371 + 00	0.28 A±		ALL R.T. & L.						VI. RTE. 4A
2A	ALDRICO, FRANCIS A. & AUDREY A.	8,9	REV. 290 + 50 LT.	REV. 363 + 67 LT.	14.59 A±		SLOPE (T) DRIVE (T) SLOPE (T) DRIVE (T) SLOPE (T) CONST. EASE. (T)	WD		CASTLETON			(558) SF±
			REV. 359 + 59 RT.	REV. 363 + 67 LT.									20' GRAVEL MP 0683
			REV. 358 + 97 LT.	REV. 360 + 50 LT.									(685) SF±
			REV. 360 + 90 LT.										15' PAVED MP 0685
			REV. 361 + 90 LT.	REV. 361 + 74 LT.									
			REV. 361 + 80 LT.										
			REV. 362 + 45 LT.	REV. 362 + 55 LT.									
			REV. 363 + 35 LT.	REV. 363 + 66 LT.									
2B		8,9	359 + 59 RT.	REV. 363 + 67 LT.	0.23 A±		ALL R.T. & L.						VI. RTE. 4A

TABLE OF REVISIONS

REVISION NO.	SHEET NO.	DESCRIPTION OF REVISION	DATE	MADE BY	APPROVED BY
1	6,7	PARCELS: NO. 2 ALBERICE, NO. 3 ENGLEBRECHT, NO. 4 PAWLUSIAK. CORRECTED SPELLING ON NO. 2 CORRECTED STATION AND SPELLING ON NO. 3. CORRECTED SPELLING ON NO. 4 PER C.O. 6851	1-8-86	M.J.R.	<i>LWB</i>
2	6	PARCEL 1A BIRD MT. CHANGE DETOUR (T) FROM REV. 354+50 RT. TO REV. 362+43 RT. PER CO 6902	3-27-87	M.J.R.	<i>LWB</i>
3	7,10	PARCEL NO. 3 ENGLEBRECHT. ADD NEW DRIVE & CULVERT. PER C.O. 6971 <i>Myles To Design 7-30-87</i>	7-22-87	M.J.R.	<i>LWB</i>

R.O.W. PLANS

MADE BY: M. RYAN DATE 8/11/86
CHECKED BY: F. JOHN MALNATI DATE 8/11/86

DR. RT. — DRAINAGE RIGHT
DT. RT. — DITCHING RIGHT
CH. RT. — CHANNEL RIGHT
DRIVE RT. — DRIVE RIGHT
CL. RT. — CULVERT RIGHT
D — DEMOLITION OR REMOVAL
W — WATER SOURCES

PRESENT R.O.W.
--- TAKING WITHOUT ACCESS
--- TAKING WITHOUT ACCESS ALONG PROPERTY LINES
--- TAKING WITH ACCESS
(P) PERMANENT EASEMENT
(T) TEMPORARY EASEMENT

LEGEND
--- CONST. EASE. --- CONST. EASEMENT
SR — SR — SLOPE RIGHTS
P — P — PROPERTY LINE
Δ — Δ — TOP OF CUT
○ — ○ — TOE OF SLOPE

APPROVED: *[Signature]* DATE 8-26-86
CHIEF OF PLANS & TITLES

PROJECT CASTLETON- IRA
NO. RS 0142(12)
SHEET 6 OF 10

CONSTRUCT DRIVES
 STA 360+90 LT. (GRAVEL)
 STA 361+90 LT. (PAVED)

ALBERICO, FRANCIS A. & AUDREY A.



BEGIN ROW PROJECT
 RS 0142 (12) STA. 359+59 3' RT.

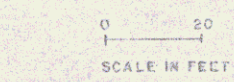
BIRD MT. RESORT CORP

SURVEY CURVE DATA

A	35° 03'	RT
D	6 + 30'	
R	881.47	
T	253.17	
L	493.07	
E	35.63	

REVISED CURVE DATA

A	35° 00'	RT
D	7 + 00'	
R	818.51	
T	258.08	
L	500.00	
E	39.72	
BANK 0.063 FT./FT.		



ROW PLANS
 357+00 - 362+00

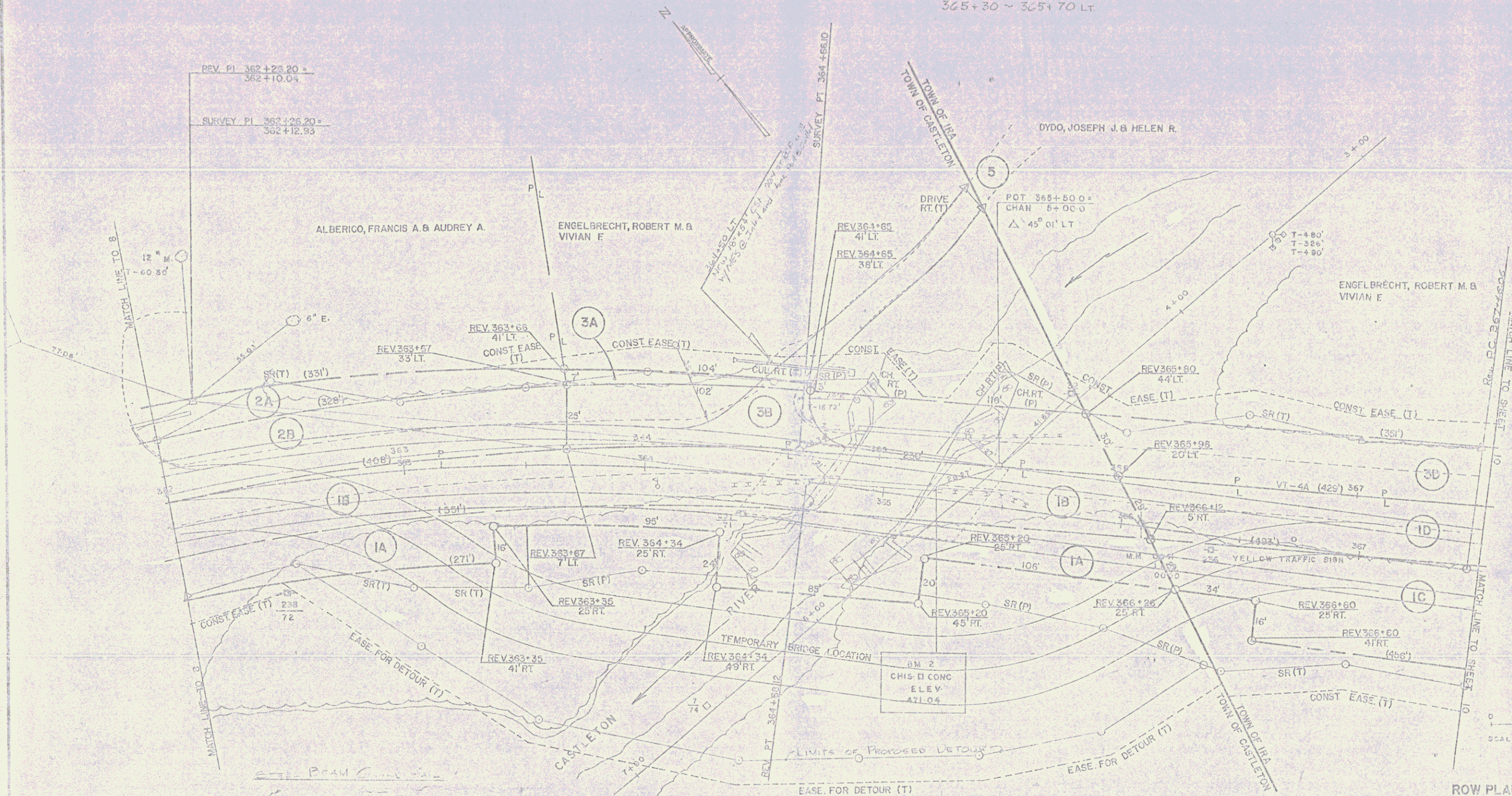
SURVEYED BY HANTONI DATE 8/01
 DRAWN BY FITZGERALD DATE 12/01
 TRACED BY FITZGERALD DATE 12/01

CASTLETON - IRA
 RS 0142 (12)
 SHEET 8 OF 10

DATUM
 VERTICAL NGVD 1929
 HORIZONTAL N/A

CONSTRUCT DRIVE
 STA 364+50 LT (GRAVEL)

REMOVAL AND DISPOSAL OF
 EXISTING GUARD RAIL
 364+38 ~ 364+77 RT.
 364+60 ~ 364+81 LT.
 365+21 ~ 365+60 LT.
 365+30 ~ 365+70 LT.



DATUM
 VERTICAL NSVD 1929
 HORIZONTAL N/A

BIRD M1 RESORT CORP.

ROW PLANS
 362+00 - 367+50

SURVEYED BY FANTONI DATE 5/81
 DRAWN BY FITZGERALD DATE 12/81
 TRACED BY FITZGERALD DATE 12/81

CASTLETON - IRA
 RS 0142 (12)
 SHEET 9 OF 10

REMOVAL AND DISPOSAL OF
EXISTING GUARD RAIL
368+91 ~ 370+07 RT.
369+20 ~ 370+57 LT.

CONSTRUCT DRIVE
370+06 LT. 12' WIDE
DRIVE ALIGNMENT MAY BE ADJUSTED
IN THE FIELD AT THE DISCRETION OF THE
RESIDENT ENGINEER.

REVISED CURVE DATA

A	32° 55' LT.
D	733.30'
R	763.94'
T	225.32'
L	438.22'
E	32.54'
BANK	00/1 FT/FT.

SURVEY CURVE DATA

A	28° 55' LT.
D	122'
R	471.45'
T	127.57'
L	249.30'
E	13.75'

PAWLUSIAK, THOMAS H. & COLLEEN J.
PAWLUSIAK, FRANCIS M. & CHARLOTTE

ENGELBRECHT, ROBERT M. & VIVIAN F.



BM 3
CHIS. □ WING WALL
ELEV. 469.11

0 20
SCALE IN FEET

DATUM
VERTICAL NGVD 1929
HORIZONTAL N/A

ROW PLANS
367+50 ~ 373+00
SURVEYED BY FANTONI DATE 8/81
DRAWN BY FITZGERALD DATE 12/01
TRACED BY FITZGERALD DATE 12/01
CASTLETON - IRA
RS 0142 (12)
SHEET 10 OF 10