

BRIDGE RAILING, GALVANIZED NETC 2 RAIL  
 ML 400+87 TO 401+63 LT  
 ML 400+76 TO 401+52 RT

GUARDRAIL APPROACH SECTIONS: NETC 2 RAIL  
 ML 400+62 TO 400+87 LT  
 ML 401+63 TO 401+88 LT  
 ML 400+51 TO 400+76 RT  
 ML 401+52 TO 401+73 RT

HD STEEL BEAM GUARDRAIL, GALVANIZED  
 ML 400+39 TO 400+62 LT  
 ML 401+88 TO 403+59 LT  
 ML 399+63 TO 400+51 RT

MANUFACTURED TERMINAL SECTION, FLEMING  
 ML 399+26 TO 399+63 RT

ANCHOR FOR HD STEEL BEAM GUARDRAIL  
 ML 400+39 LT  
 ML 401+73 RT

**BAILEY, CLAYTON A. JR.**

END MAINT. AGREE. ZONE  
 THRU STA. 500+26.39 CL

BEGIN MAINT. AGREE. ZONE  
 THRU STA. 500+11.00 CL  
 LENGTH: 16.39'

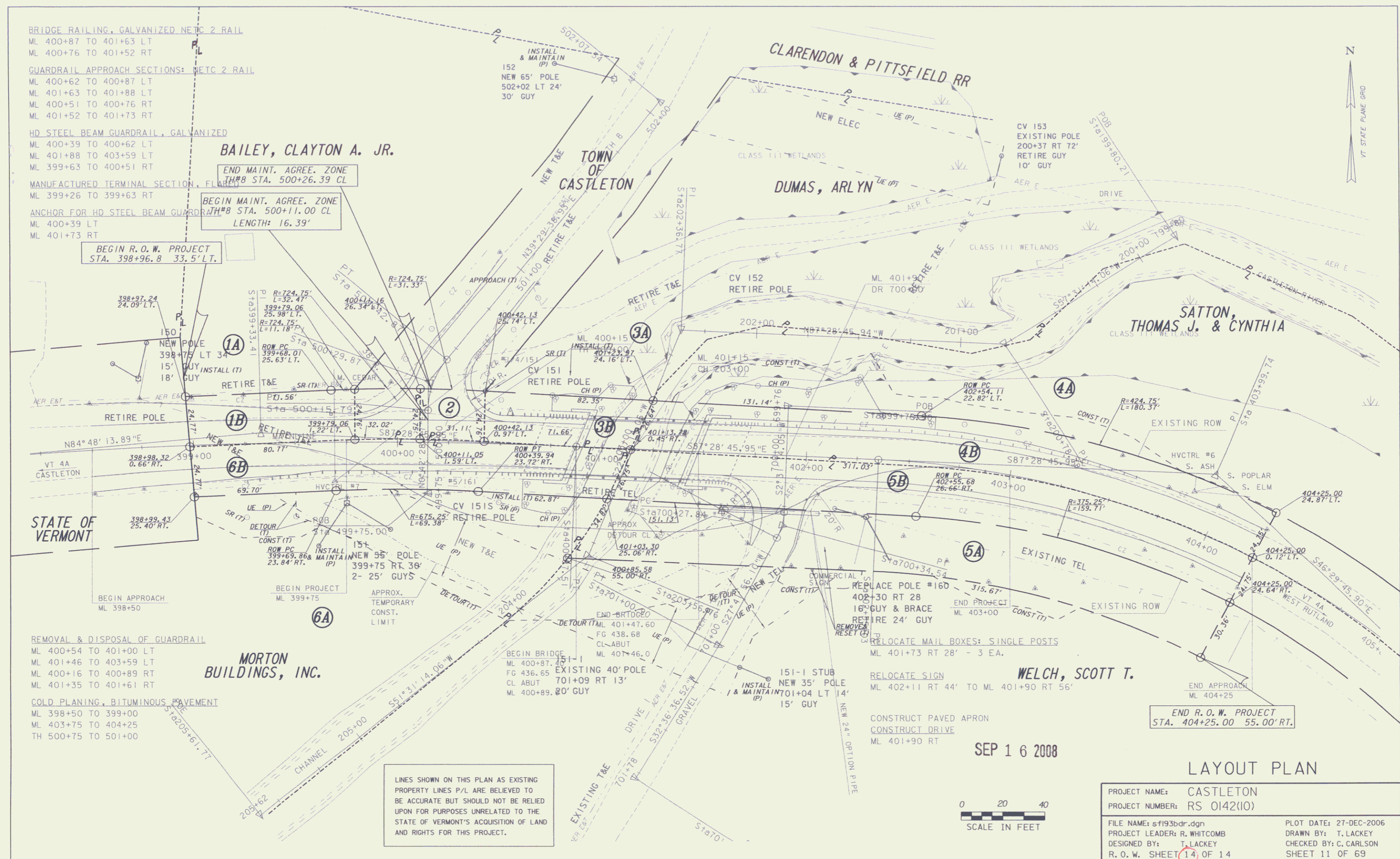
BEGIN R.O.W. PROJECT  
 STA. 398+96.8 33.5' LT.

REMOVAL & DISPOSAL OF GUARDRAIL  
 ML 400+54 TO 401+00 LT  
 ML 401+46 TO 403+59 LT  
 ML 400+16 TO 400+89 RT  
 ML 401+35 TO 401+61 RT

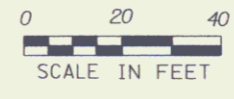
COLD PLANING, BITUMINOUS PAVEMENT  
 ML 398+50 TO 399+00  
 ML 403+75 TO 404+25  
 TH 500+75 TO 501+00

**MORTON BUILDINGS, INC.**

LINES SHOWN ON THIS PLAN AS EXISTING  
 PROPERTY LINES P/L ARE BELIEVED TO  
 BE ACCURATE BUT SHOULD NOT BE RELIED  
 UPON FOR PURPOSES UNRELATED TO THE  
 STATE OF VERMONT'S ACQUISITION OF LAND  
 AND RIGHTS FOR THIS PROJECT.



SEP 16 2008



**LAYOUT PLAN**

PROJECT NAME: CASTLETON	PLOT DATE: 27-DEC-2006
PROJECT NUMBER: RS 0142(10)	DRAWN BY: T. LACKEY
FILE NAME: sf193bdr.dgn	CHECKED BY: C. CARLSON
PROJECT LEADER: R. WHITCOMB	SHEET 11 OF 69
DESIGNED BY: T. LACKEY	
R. O. W. SHEET 14 OF 14	

14