

GPS CONTROL POINTS

**HVCTRL # 1**

STANDARD DISK STAMPED  
V 5  
N = 406566.552  
E = 146698.769  
ELEV. = 447.62

General Location, Castleton, VT access ownership, Greg Pratt, 358 Crampton Road, Castleton, VT 05735  
To reach from the intersection of VT route 4A and VT route 30 at Castleton Corners go east along route 4A for 2.2 mi to the intersection of East Hubbardton Road left. Continue straight ahead and go east along route 4A for 0.15 mi to the intersection of Crampton Road left. Turn left and go northeast and east along Crampton road for 0.4 mi to the end of the road at the intersection of a paved drive left leading to house no. 358. Park vehicle and walk south for about 50 m to the Delaware and Hudson Railway at pole no. 452/8/9. Turn left and walk east along the railway for about 80 m to the intersection of an old road grade crossing and the site of the mark on the right. The mark is set in the top of a 20 cm square concrete monument which projects 8 cm above the ground surface. It is 5.7 m south of and about level with the south rail of the tracks, 5.9 m east of the centerline of the road, 11.9 m northeast of pole no. 160, 3.5 m north of the right-of-way fence, and 0.3 m south of a steel witness post.

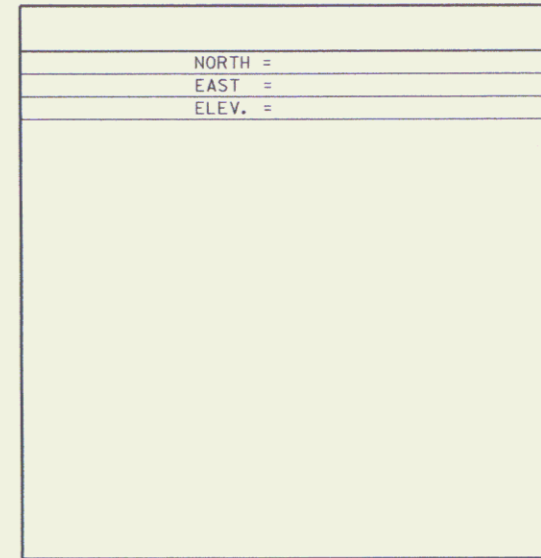
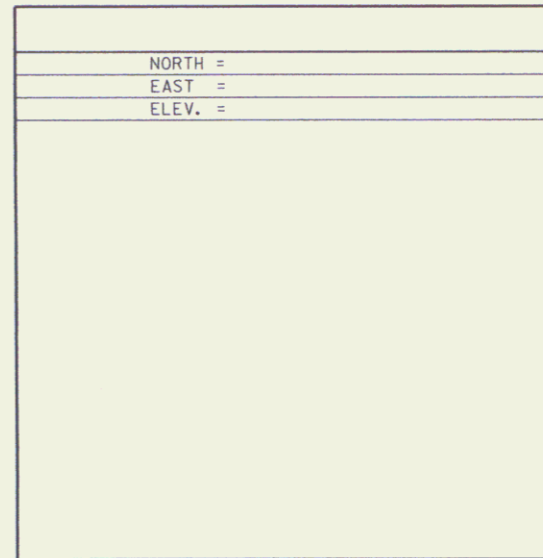
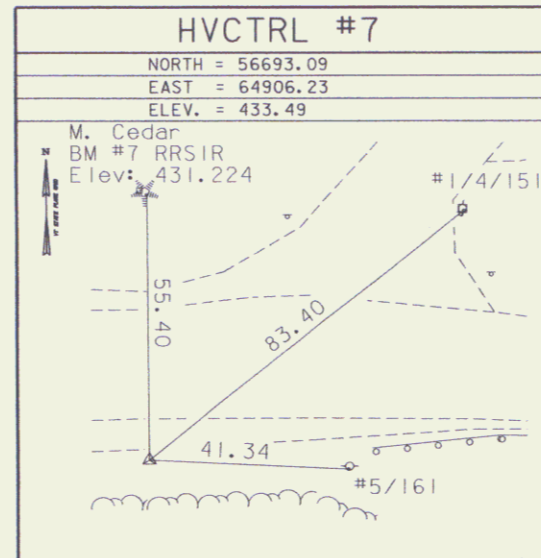
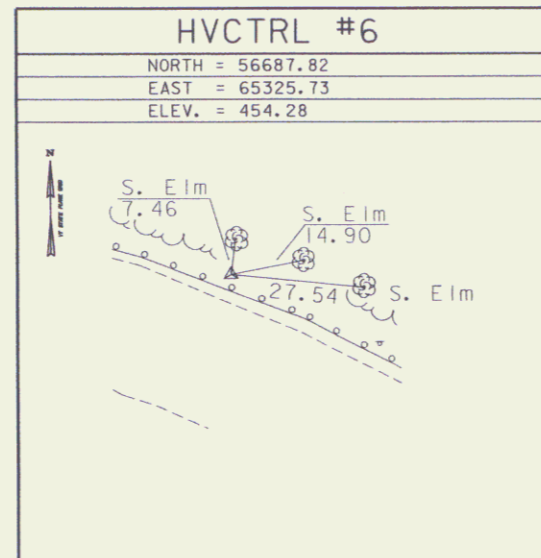
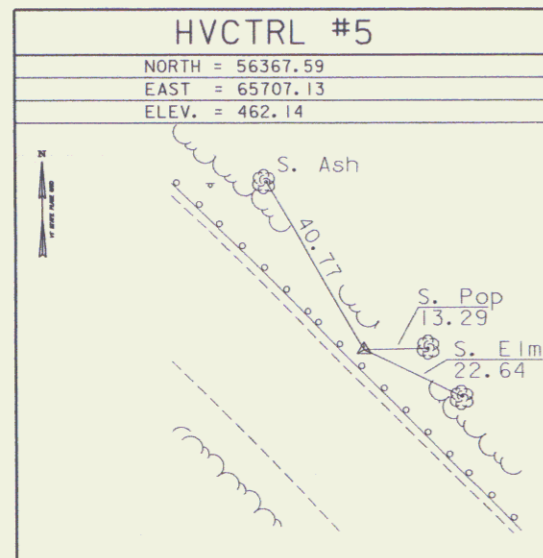
**HVCTRL # 2**

STANDARD DISK STAMPED  
Crampton  
N = 406950.324  
E = 146583.224  
ELEV. = 435.637

General location, Castleton, VT.  
To reach from the intersection of VT route 4A and VT route 30 at Castleton Corners go east along route 4A for 2.2 mi to the intersection of east Hubbardton Road left. Continue straight ahead and go east along route 4A for 0.15 mi to the intersection of Crampton Road left. Turn and go northeast along Crampton Road for 0.05 mi to the intersection of the Delaware and Hudson Railway and the site of the mark on the right. The mark is set 2 cm below ground surface in the top of a feno style monument. It is 3.9 m southeast of and about 0.1 m lower than the centerline of Crampton Road, 7.1 m northeast of the northeast rail of the tracks, 25.9 m east northeast of pole no. 45/1/2, 1.7 m north of a stop sign, 0.5 m northwest of a fiberglass witness post.  
NOTE: Mark is intervisable with mark V5.

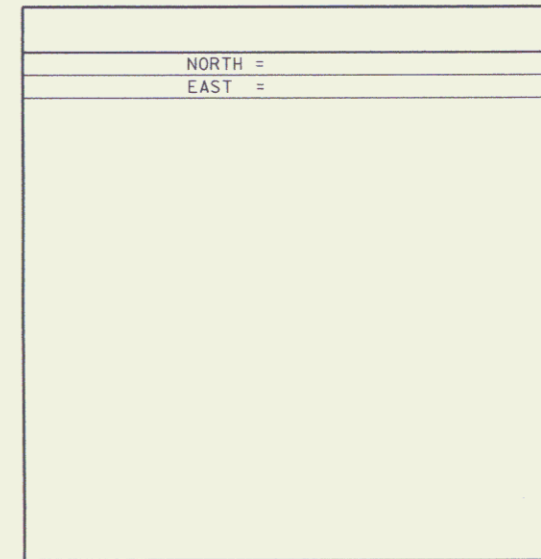
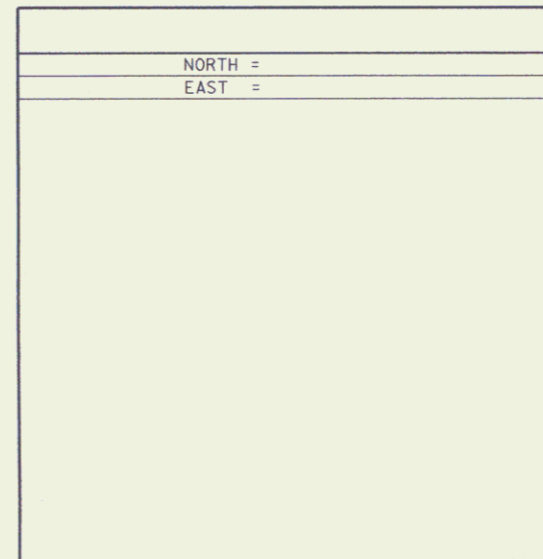
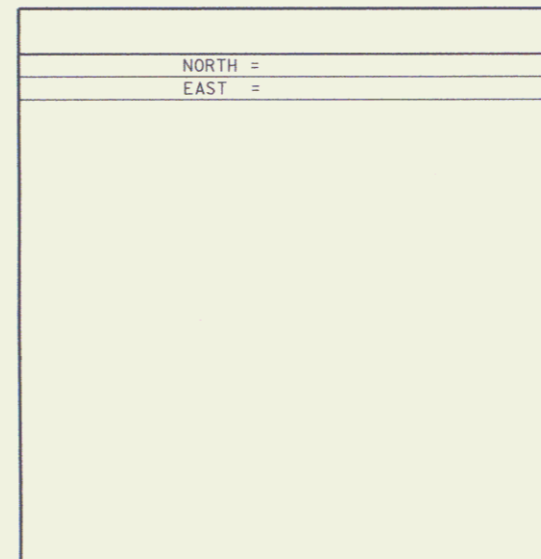
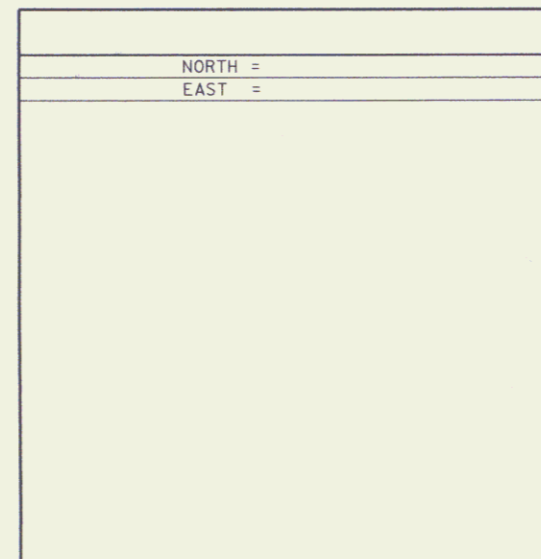
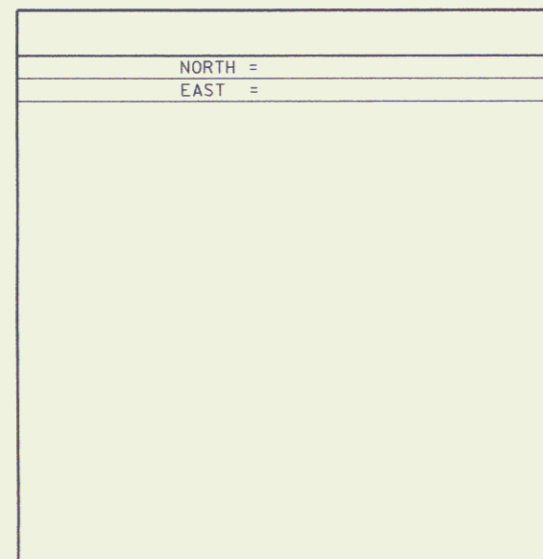
- DESCRIPTION PROVIDED BY VERMONT AGENCY OF TRANSPORTATION GEODETIC SURVEY UNIT
- TO ALLOW THE STATE PLANE COORDINATES TO FIT THE AGENCY DESIGN PLANE, SUBTRACT 350,000 FROM THE NORTING AND SUBTRACT 1,400,000 FROM THE EASTING

TRAVERSE TIES



• MAIN TRAVERSE COMPLETED 07/23/02 by L. Orvis P.C. J. Hulett T. Wilson

ALIGNMENT TIES



• ALIGNMENT STAKED

DATUM	
VERTICAL	NAVD 88
HORIZONTAL	NAD 83 (96)
ADJUSTMENT	NONE

SEP 16 2008

PROJECT NAME: Castleton  
PROJECT NUMBER: RSO142 (10)

FILE NAME: T8193/survey/xf193t1.dgn  
PROJECT LEADER:  
DESIGNED BY:

PLOT DATE: 05-JUL-2005  
DRAWN BY: R. Bullock  
CHECKED BY:  
ROW SHEET 8 OF 14