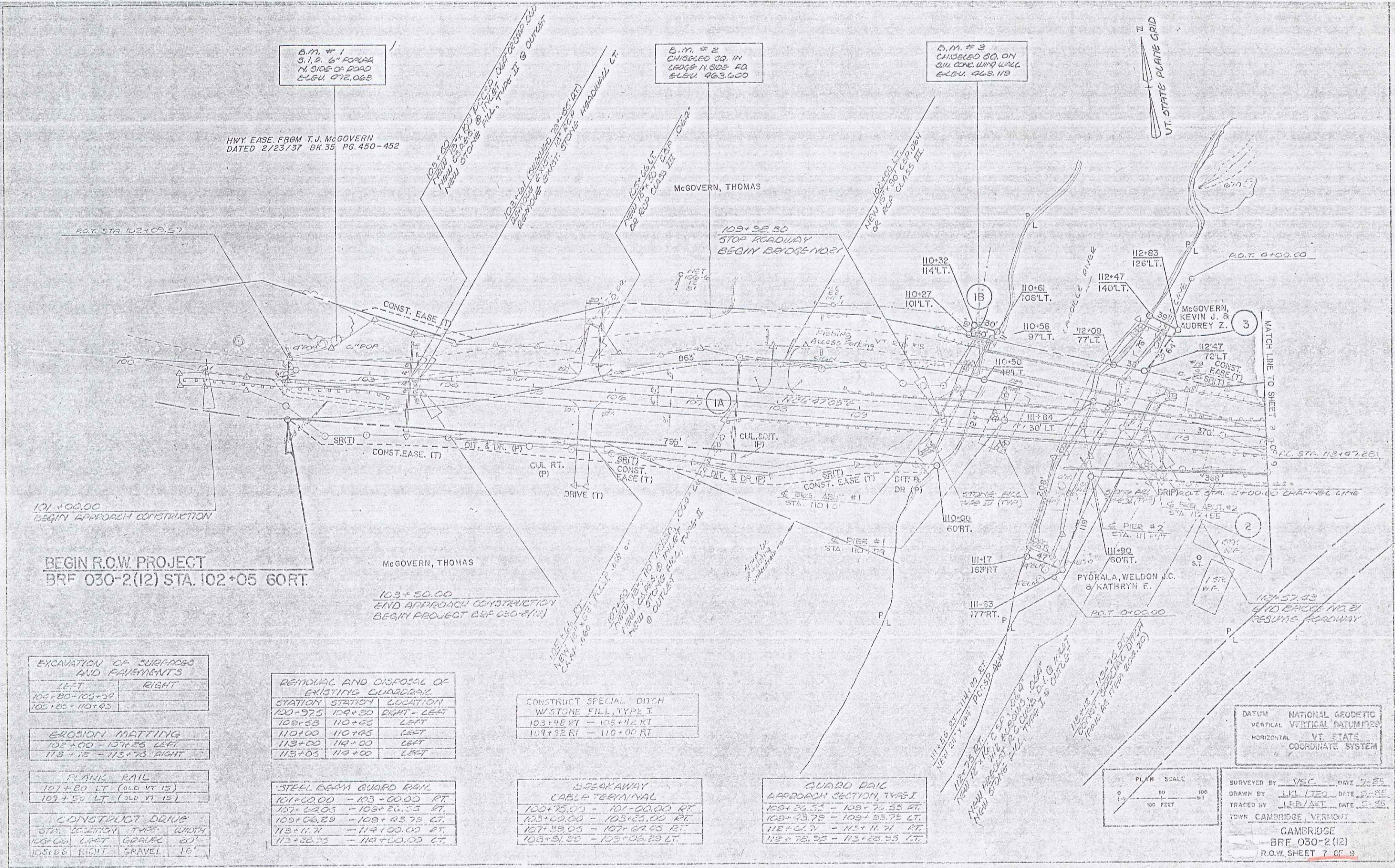


POOR ORIGINAL COPY



HWY EASE. FROM T.J. McGOVERN
DATED 2/23/37 BK. 35 PG. 450-452

B.M. # 1
O.I.P. 6" P.O.P. 22
N. SIDE OF ROAD
ELEV. 976.063

B.M. # 2
CHISELED 82. IN
150# N. SIDE RD
ELEV. 963.600

B.M. # 3
O.I.P. 30. ON
S.W. CORNER WALL
ELEV. 943.119

EXCAVATION OF SURFACES AND FAVEMENTS

LEFT	RIGHT
102+80-105+29	
102+25-110+45	

EROSION MATTING

102+00 - 104+25	LEFT
113+15 - 113+75	RIGHT

FLANK RAIL

107+80 LT. (OLD VT. 15)
107+50 LT. (OLD VT. 15)

CONSTRUCT DRIVE

STA.	SECTION	TYPE	WIDTH
103+00	LEFT	GRAVEL	60'
105+66	RIGHT	GRAVEL	16'

REMOVAL AND DISPOSAL OF EXISTING CURB/DIAPHR.

STATION	STATION	LOCATION
100+97.5	109+00	RIGHT - LEFT
108+53	110+00	LEFT
110+00	110+45	LEFT
113+00	114+00	LEFT
113+05	114+00	LEFT

STEEL BEAM GUARD RAIL

101+00.00	-	103+00.00	RT.
107+62.05	-	108+26.55	RT.
109+06.29	-	109+23.75	LT.
113+11.71	-	114+00.00	RT.
113+28.75	-	114+00.00	LT.

CONSTRUCT SPECIAL DITCH
W/STONE FILL, TYPE I

103+48 RT.	-	105+42 RT.
104+92 RT.	-	110+00 RT.

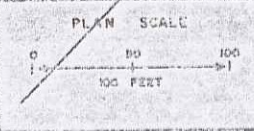
BREAKAWAY
CABLE TERMINAL

103+75.00	-	104+00.00	RT.
103+00.00	-	105+25.00	RT.
107+49.05	-	107+27.25	LT.
103+31.39	-	103+06.29	LT.

GUARD RAIL
APPROACH SECTION, TYPE I

108+26.55	-	108+26.55	RT.
108+43.75	-	108+23.75	LT.
112+21.71	-	113+11.71	RT.
112+28.95	-	113+28.95	LT.

DATUM NATIONAL GEODETIC
VERTICAL VERTICAL DATUMS
HORIZONTAL VT. STATE
COORDINATE SYSTEM



SURVEYED BY VEC DATE 7-88
DRAWN BY LKL/TEO DATE 5-88
TRACED BY JLB/AMT DATE 5-88
TOWN CAMBRIDGE, VERMONT
BRF 030-2 (12)
R.O.W. SHEET 7 OF 9