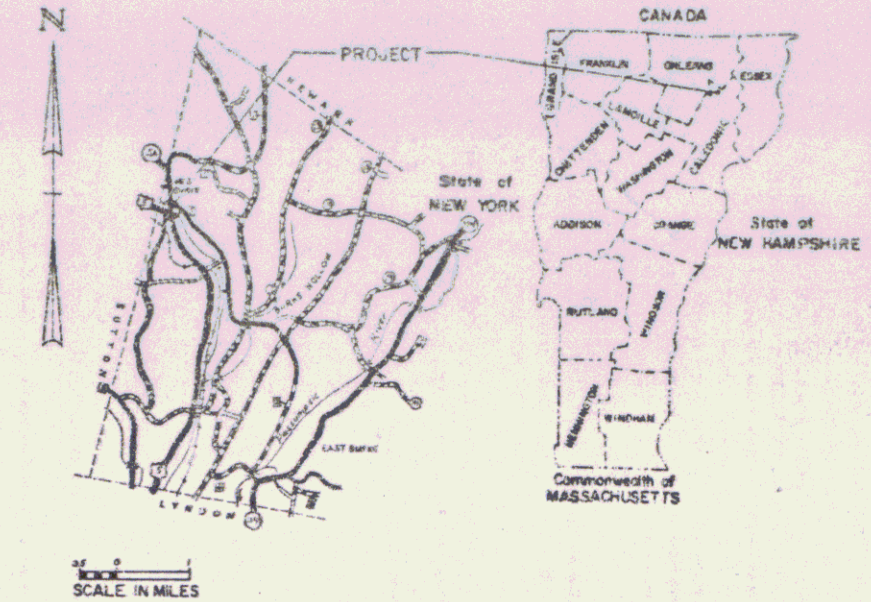


- INDEX OF SHEETS
- 1 Title Sheet
  - 2 Typical Sheet
  - 3-4 Drainage and Item Quantity Sheets
  - 5 Earthwork Sheet
  - 6-7 Plan and Profile Sheets
  - 8-9 Plans
  - 10-11 Bridge Sheets
  - 12-17 Mainline Cross Sections Vt. 5-A
  - 18-20 U.S. 5 Cross Sections
  - 21-24 Channel Cross Sections

STATE OF VERMONT  
AGENCY OF TRANSPORTATION



PROPOSED IMPROVEMENT  
**TOWN OF BURKE**  
COUNTY OF CALEDONIA  
**VT. RTE. 5-A (F.A.S.)**



BEGINNING AT THE JUNCTION OF U.S. RTE. 5 AND VT. RTE. 5-A  
IN THE TOWN OF BURKE AND EXTENDING NORTHERLY 0.038  
MILES ALONG VT. RTE. 5-A.

LENGTH OF ROADWAY 141 FT. 0.027 MILES  
LENGTH OF BRIDGE 59 FT. 0.011 MILES  
LENGTH OF PROJECT 200 FT. 0.038 MILES  
LENGTH OF R.O.W. PROJECT 347 FT. 0.065 MILES

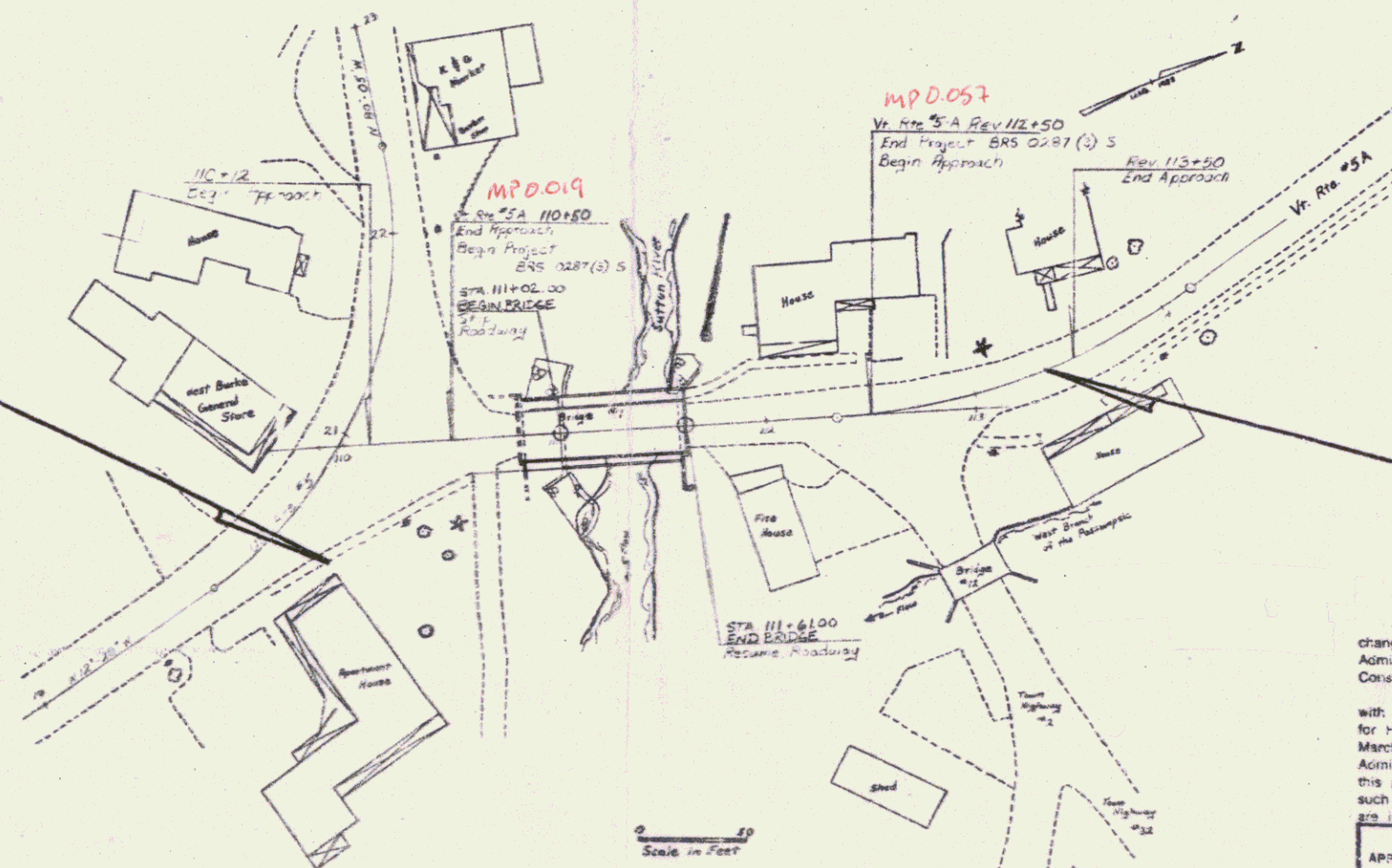
PROJECT DESCRIPTION:  
WORK CONSIST OF REMOVING AND REPLACING  
BRIDGE NO. 1, AND CONSTRUCTING SATISFACTORY  
APPROACHES WITH GUARD RAIL, DRAINAGE, ETC.

R.O.W. PLANS

**BEGIN R.O.W. PROJECT**  
BRS 0287(3)S STA. 109+88 52' RT.

- CONVENTIONAL SIGNS
- COUNTY LINE
  - TOWN LINE
  - LIMITS OF ACCESS
  - POINT OF ACCESS
  - FENCE LINE
  - STONE WALL
  - TRAVELED HWY
  - RAILROAD
  - RAILROAD
  - SURVEY LINE
  - CULVERT
  - POWER POLE
  - TELEPHONE POLE
  - TREES
  - CONTROL OF ACCESS
  - PROPERTY LINE
  - R.O.W. TAKING LINE
  - SLOPE RIGHTS
  - TOP OF CUT
  - TOE OF SLOPE

DATUM  
VERTICAL \_\_\_\_\_  
HORIZONTAL \_\_\_\_\_



ALL DRIVES AS INDICATED ON  
PLANS ARE SUBJECT TO PER-  
MITS PURSUANT TO TITLE 19,  
SECTION 43, V.S.A.  
RIGHT-OF-WAY DIVISION  
TOWN FILE  
PERPETUAL

Town of \_\_\_\_\_  
(To Be Returned To R.O.W. Division)

**END R.O.W. PROJECT**  
BRS 0287(3)S STA. 113+35 CL

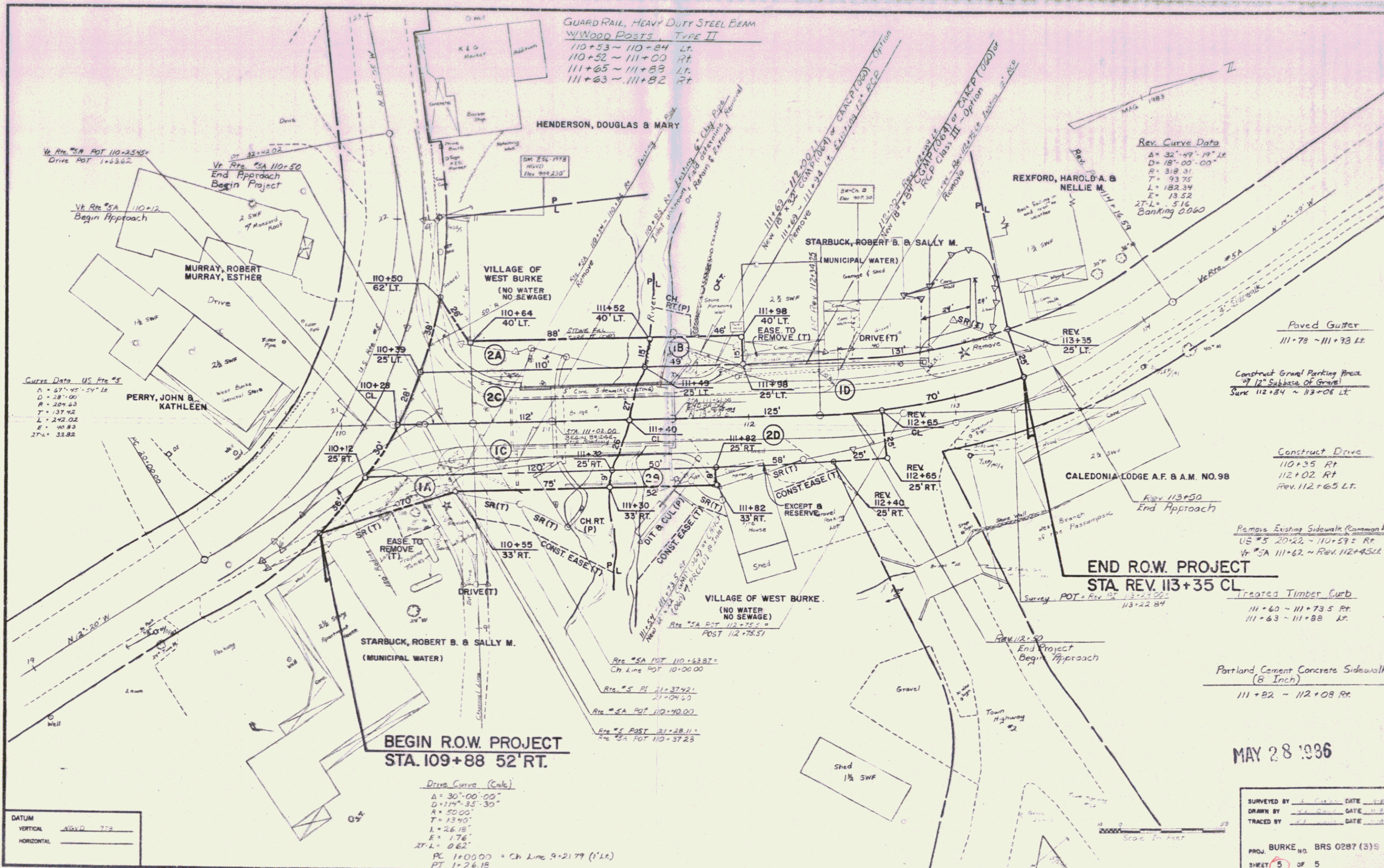
MAY 28 1986

Pin # 78F191  
PROJECT PROCESSED UNDER  
SECONDARY ROAD PLAN

These plans are subject to such engineering  
changes as may be required by the Federal Highway  
Administration or the Director of Engineering and  
Construction.  
Construction is to be carried on in accordance  
with these plans and the Standard Specifications  
for Highway and Bridge Construction dated  
March, 1976, as approved by the Federal Highway  
Administration on October 27, 1976 for use on  
this project, including all subsequent revisions and  
such revised specifications and special provisions as  
are incorporated in these plans.

APPROVED: \_\_\_\_\_ DATE 10-23-84  
CHIEF, PROPERTY ADMINISTRATION

SUBMITTED BY ORDER OF THE STATE TRANSPORTATION BOARD  
APPROVED: SJA DATE 10-23-84  
DIRECTOR OF ENGINEERING AND CONSTRUCTION  
DEPARTMENT OF TRANSPORTATION  
FEDERAL HIGHWAY ADMINISTRATION  
APPROVED: \_\_\_\_\_ DATE \_\_\_\_\_  
DIVISION ADMINISTRATOR  
PROJECT: BURKE BRS 0287(3)S  
SHEET 1 OF 5 SHEETS  
SRS 72/11/70



GUARD RAIL, HEAVY DUTY STEEL BEAM  
w/ WOOD POSTS, TYPE II  
110+53 ~ 110+84 Lt.  
110+52 ~ 111+00 Rt.  
111+65 ~ 111+88 Lt.  
111+63 ~ 111+82 Rt.

Rev. Curve Data  
Δ = 32°-49'-19" Lt.  
D = 18°-00'-00"  
R = 318.31  
T = 93.75  
L = 182.34  
E = 13.52  
2T-L = 5.16  
Banking 0.060

Curve Data US Pts #9  
Δ = 47°-45'-54" Lt.  
D = 28°-00"  
R = 209.63  
T = 137.92  
L = 242.02  
E = 10.93  
2T-L = 33.82

BEGIN R.O.W. PROJECT  
STA. 109+88 52' RT.

END R.O.W. PROJECT  
STA. REV. 113+35 CL

DATUM  
VERTICAL NGVD 7-8  
HORIZONTAL \_\_\_\_\_

Drive Curve (Calc)  
Δ = 30°-00'-00"  
D = 114°-35'-30"  
R = 50.00'  
T = 13.40'  
L = 26.18'  
E = 1.76'  
2T-L = 0.62'  
PC = 100.00 = Ch Line 9+21.79 (1' Lt.)  
PT = 26.18

MAY 28 1996

SURVEYED BY	DATE
DRAWN BY	DATE
TRACED BY	DATE
PROJ. BURKE No. BRS 0287 (3)S	
SHEET 5 OF 5	