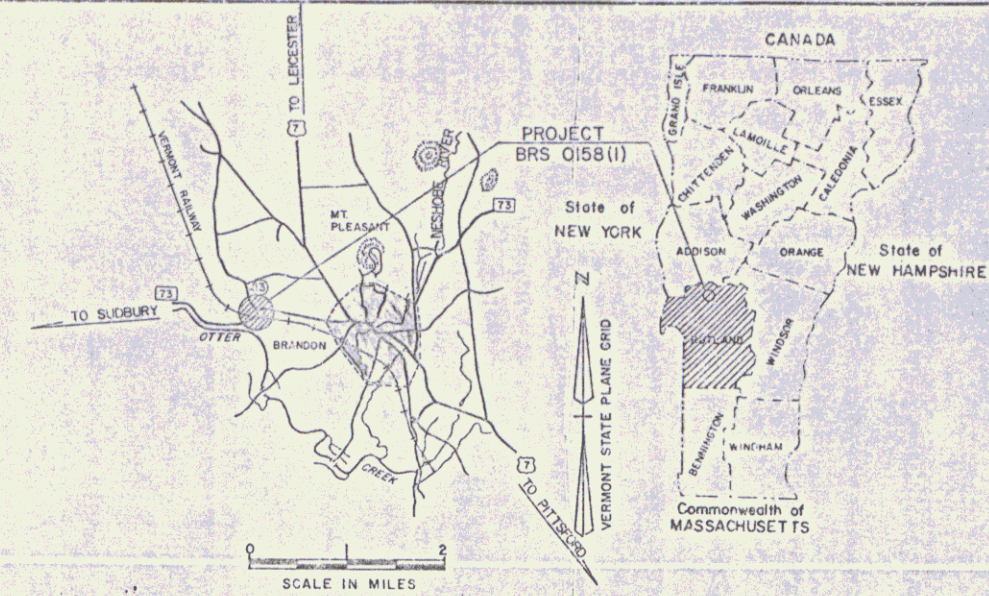


STATE OF VERMONT
AGENCY OF TRANSPORTATION



PROPOSED IMPROVEMENT
TOWN OF BRANDON
COUNTY OF RUTLAND
VT. RTE. 73

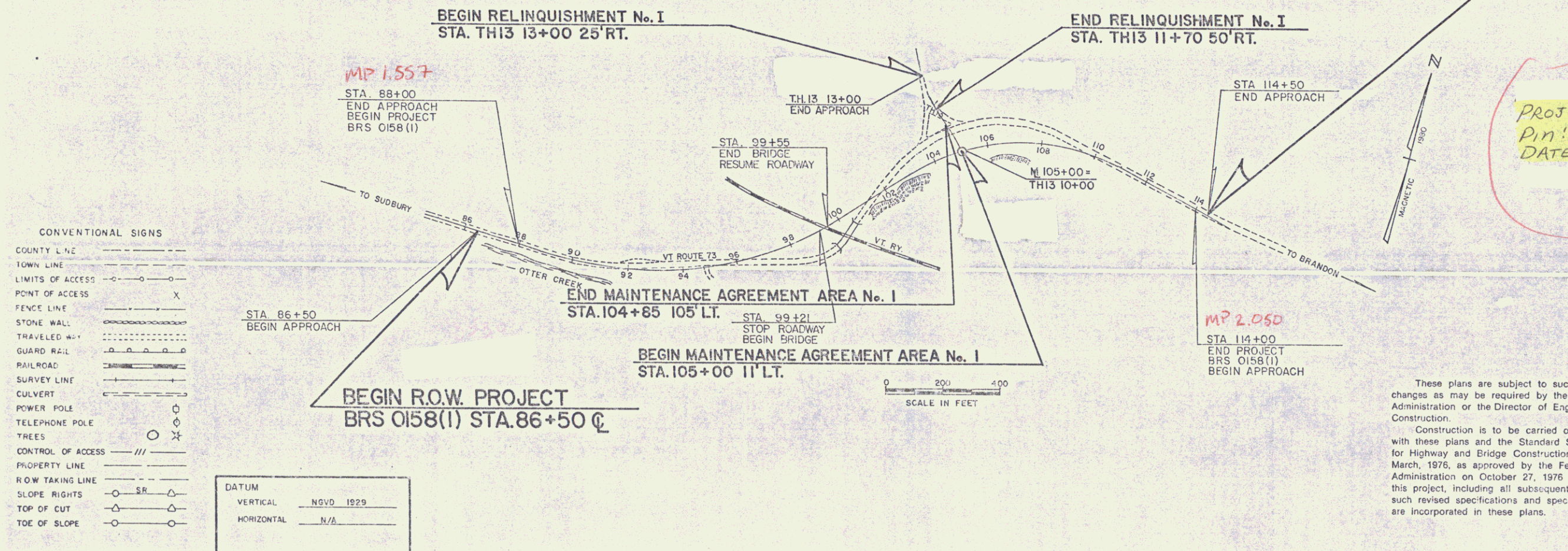


R.O.W. PLANS

BEGINNING AT A POINT APPROXIMATELY 1.672 MILES
EASTERLY OF THE SUDBURY-BRANDON TOWN LINE
AND EXTENDING EASTERLY 0.492 MILES.
CONSTRUCTION CONSISTS OF GRADING, DRAINAGE,
SUBBASE, PAVING AND A NEW RAILROAD STRUCTURE.

LENGTH OF ROADWAY 2566.00 FEET = 0.486 MILES
LENGTH OF BRIDGE 34.00 FEET = 0.006 MILES
LENGTH OF PROJECT 2600.00 FEET = 0.492 MILES
LENGTH OF R.O.W. PROJECT 2800.00 FEET = 0.530 MILES

END R.O.W. PROJECT
BRS 0158(1) STA. 114+50 C



PROJECT: BRS 0158(1)
Pin: 78F186
DATE: 09/24/84

CONVENTIONAL SIGNS

COUNTY LINE	---
TOWN LINE	- - - -
LIMITS OF ACCESS	○ ○ ○ ○
POINT OF ACCESS	X
FENCE LINE	— · — · — ·
STONE WALL	— · — · — ·
TRAVELED ROAD	— · — · — ·
GUARD RAIL	— · — · — ·
RAILROAD	— · — · — ·
SURVEY LINE	— · — · — ·
CULVERT	— · — · — ·
POWER POLE	○ ○ ○ ○
TELEPHONE POLE	○ ○ ○ ○
TREES	○ ○ ○ ○
CONTROL OF ACCESS	///
PROPERTY LINE	— · — · — ·
R.O.W. TAKING LINE	— · — · — ·
SLOPE RIGHTS	○ ○ ○ ○
TOP OF CUT	△ △ △ △
TOE OF SLOPE	○ ○ ○ ○

DATUM

VERTICAL	NSVD 1929
HORIZONTAL	N/A

These plans are subject to such engineering changes as may be required by the Federal Highway Administration or the Director of Engineering and Construction.

Construction is to be carried on in accordance with these plans and the Standard Specifications for Highway and Bridge Construction dated March, 1976, as approved by the Federal Highway Administration on October 27, 1976 for use on this project, including all subsequent revisions and such revised specifications and special provisions as are incorporated in these plans.

APPROVED	<i>W. L. Linn</i>	DATE	9-24-84
CHIEF, PROPERTY ADMINISTRATION			
SUBMITTED BY	ORDER OF THE STATE TRANSPORTATION BOARD		
APPROVED	<i>J. J. Page</i>	DATE	9-24-84
DIRECTOR OF ENGINEERING AND CONSTRUCTION			
DEPARTMENT OF TRANSPORTATION FEDERAL HIGHWAY ADMINISTRATION			
APPROVED		DATE	
DIVISION ADMINISTRATOR			
BRANDON BRS 0158(1) SHEET 1 OF 10			