

INDEX OF SHEETS

1. GENERAL NOTES
2. PLAN SHEETS
3. PROFILE SHEETS
4. SPECIAL NOTES
5. SPECIAL NOTES
6. SPECIAL NOTES
7. SPECIAL NOTES
8. SPECIAL NOTES
9. SPECIAL NOTES
10. SPECIAL NOTES
11. SPECIAL NOTES
12. SPECIAL NOTES
13. SPECIAL NOTES
14. SPECIAL NOTES
15. SPECIAL NOTES
16. SPECIAL NOTES
17. SPECIAL NOTES
18. SPECIAL NOTES
19. SPECIAL NOTES
20. SPECIAL NOTES

STATE OF VERMONT
AGENCY OF TRANSPORTATION



PROPOSED IMPROVEMENT
TOWNS OF WILLISTON-ESSEX
COUNTY OF CHITTENDEN

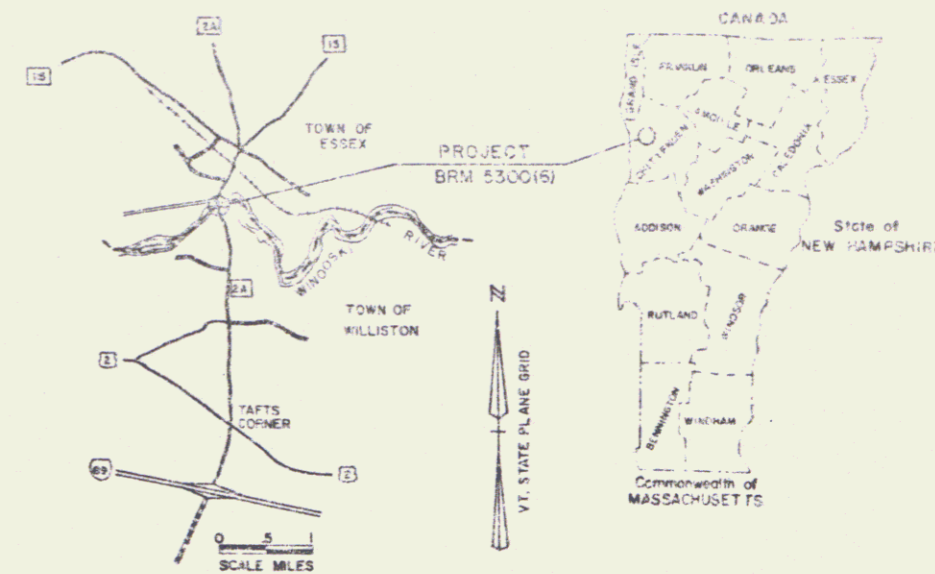
VT. RTE. 2-A

BEGINNING AT A POINT ON VT. RTE. 2-A IN THE TOWN OF WILLISTON
0.190 MILES SOUTH OF THE WILLISTON-ESSEX TOWN LINE AND
EXTENDS NORTHERLY 0.360 MILES.

LENGTH OF ROADWAY 1,276 FT. = 0.241 MILES
LENGTH OF BRIDGE 220 FT. = 0.041 MILES
LENGTH OF PROJECT 1,496 FT. = 0.282 MILES

PROJECT CONSISTS OF REPLACING DEFICIENT BRIDGE AND CONSTRUCTING
NECESSARY ROADWAY APPROACHES.

LENGTH OF ROW PROJ. 2,202 FT. = 0.417 MILES



R.O.W. PLANS

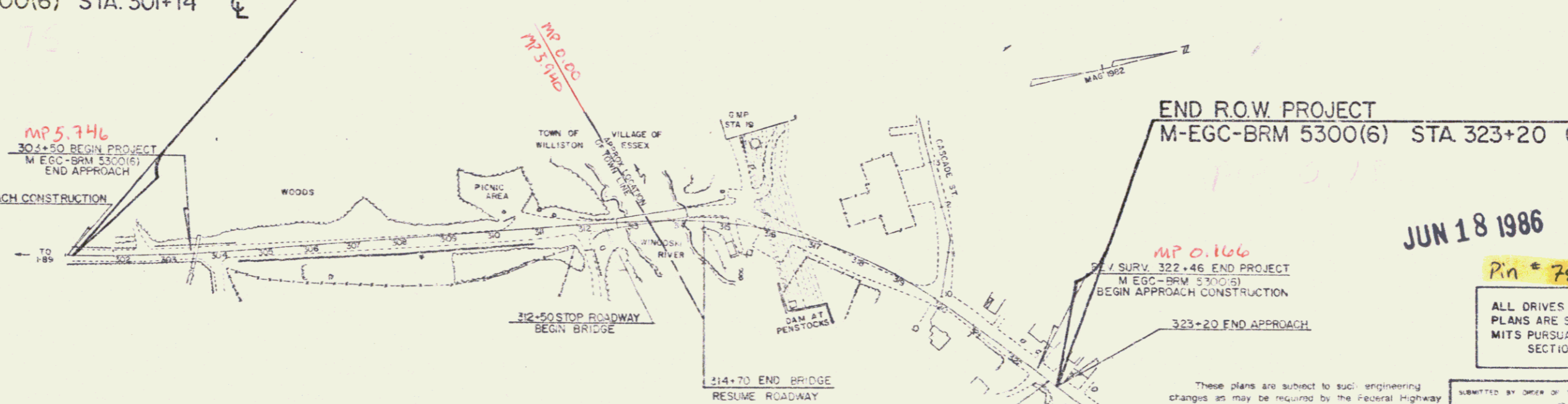
BEGIN R.O.W. PROJECT

M-EGC-BRM 5300(6) STA. 301+14

CONVENTIONAL SIGNS

COUNTY LINE	---
TOWN LINE	---
LIMITS OF ACCESS	---
POINT OF ACCESS	X
FENCE LINE	---
STONE WALL	---
TRAVELED RD.	---
GUARD RAIL	---
RAILROAD	---
SURVEY LINE	---
CULVERT	---
POWER POLE	---
TELEPHONE POLE	---
TREES	---
CONTROL OF ACCESS	---
PROPERTY LINE	---
R.O.W. TAKING LINE	---
SLOPE RIGHTS	---
TOP OF CUT	---
TOE OF SLOPE	---

DATUM
VERTICAL: NGVD 1929
HORIZONTAL: N/A



END R.O.W. PROJECT

M-EGC-BRM 5300(6) STA. 323+20

JUN 18 1986

Pin # 78F181

ALL DRIVES AS INDICATED ON
PLANS ARE SUBJECT TO PER-
MITS PURSUANT TO TITLE 19,
SECTION 43, V.S.A.

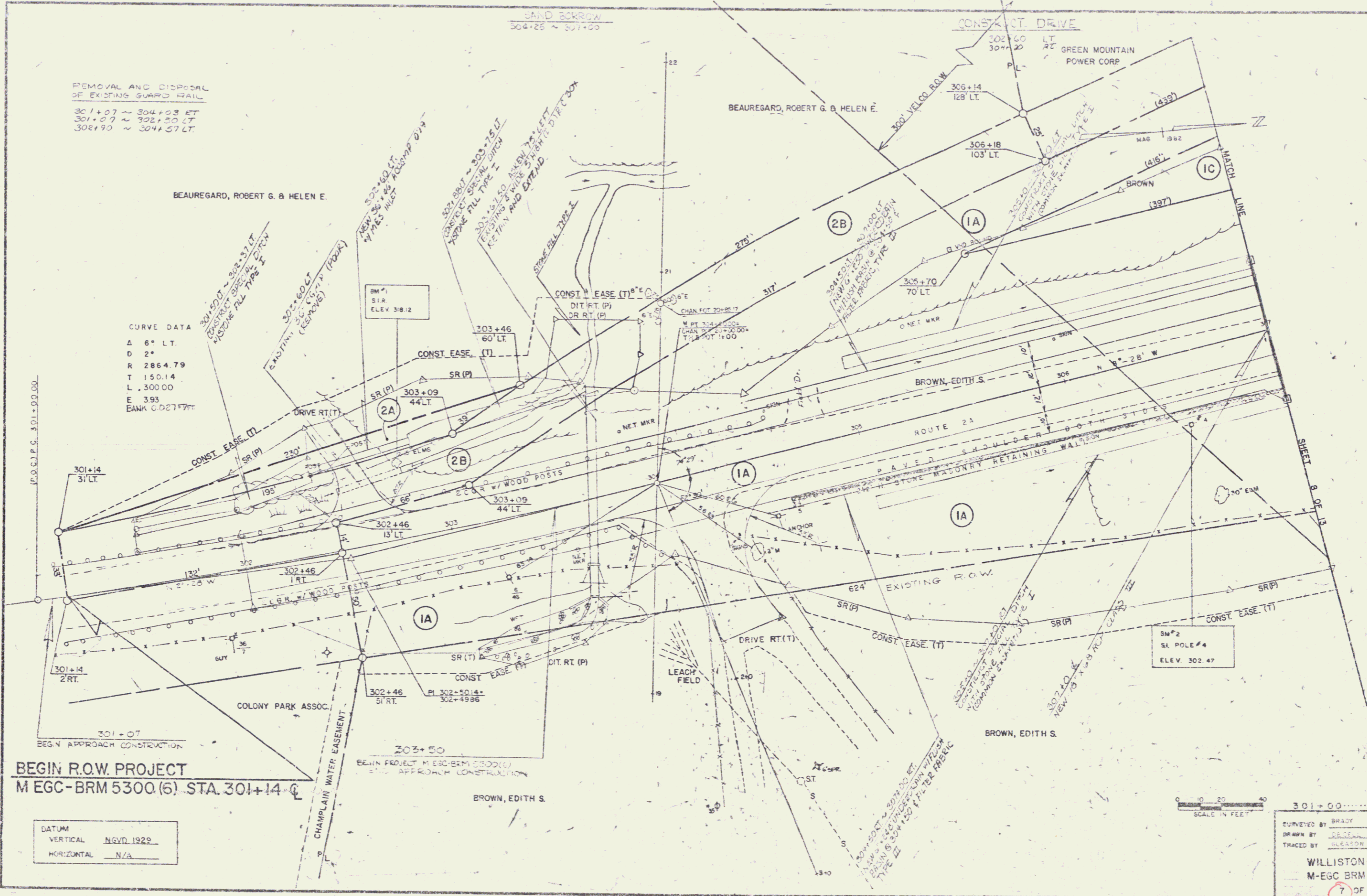
These plans are subject to such engineering
changes as may be required by the Federal Highway
Administration or the Director of Engineering and
Construction.
Construction is to be carried on in accordance
with these plans and the Standard Specifications
for Highway and Bridge Construction dated
March, 1976 as approved by the Federal Highway
Administration on October 27, 1976 for use on
this project, including all subsequent revisions and
such revised specifications and special provisions as
are incorporated in these plans.

SUBMITTED BY ORDER OF THE STATE TRANSPORTATION BOARD
APPROVED: *S. J. [Signature]* DATE 2-17-86
DIRECTOR OF ENGINEERING AND CONSTRUCTION

DEPARTMENT OF TRANSPORTATION
FEDERAL HIGHWAY ADMINISTRATION

APPROVED: *[Signature]* DATE 3-27-86
CHIEF, PROPERTY ADMINISTRATION

WILLISTON-ESSEX
M-EGC-BRM 5300 (6)
SHEET 1 OF 13



REMOVAL AND DISPOSAL
OF EXISTING GUARD RAIL
301+07 ~ 304+03 ET
301+07 ~ 302+30 LT
302+30 ~ 304+37 LT

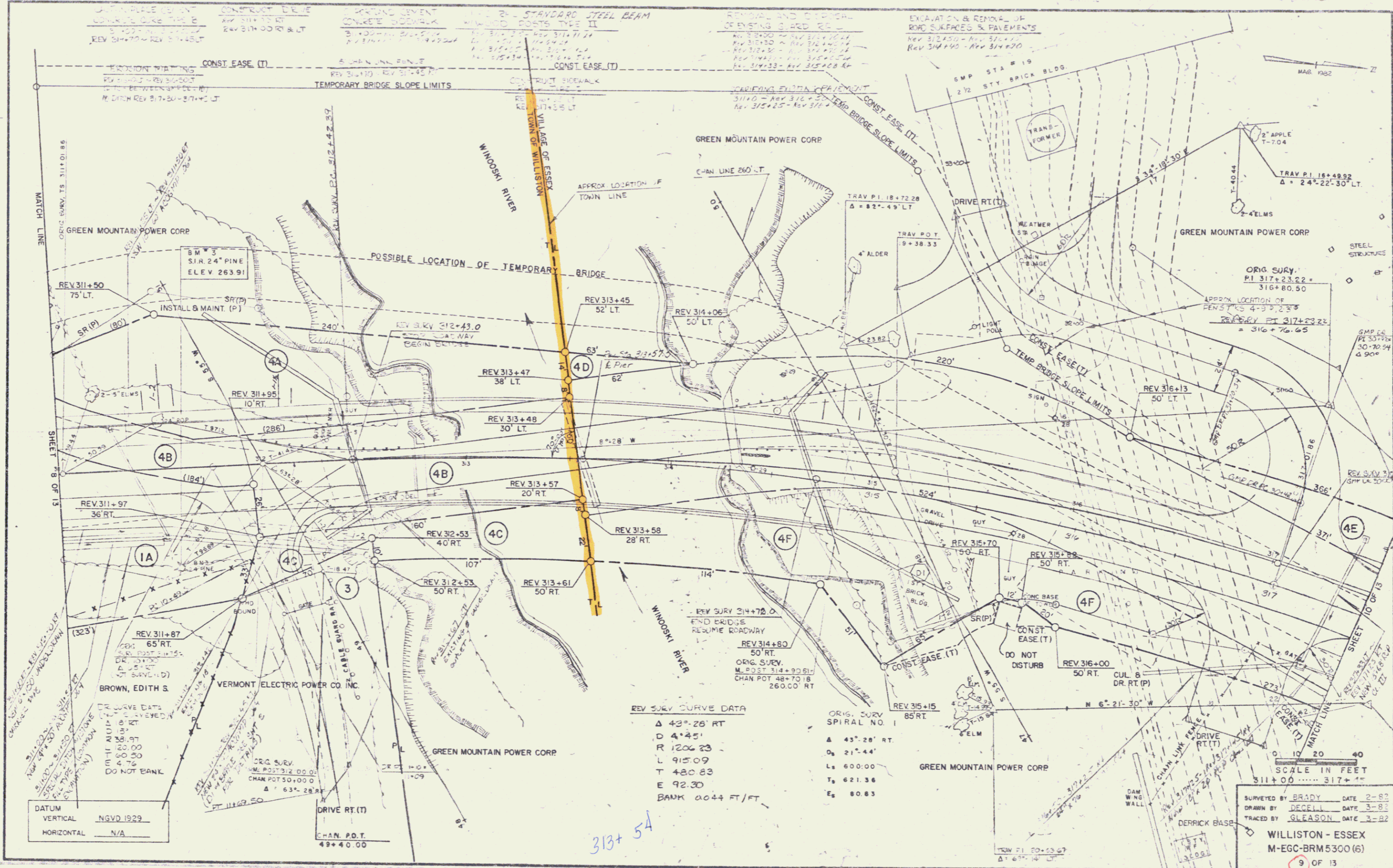
CURVE DATA
Δ 6° LT
D 2°
R 2864.79
T 150.14
L 300.00
E 393
BANK CD2747FT

BEGIN R.O.W. PROJECT
M-EGC-BRM 5300(6) STA. 301+14

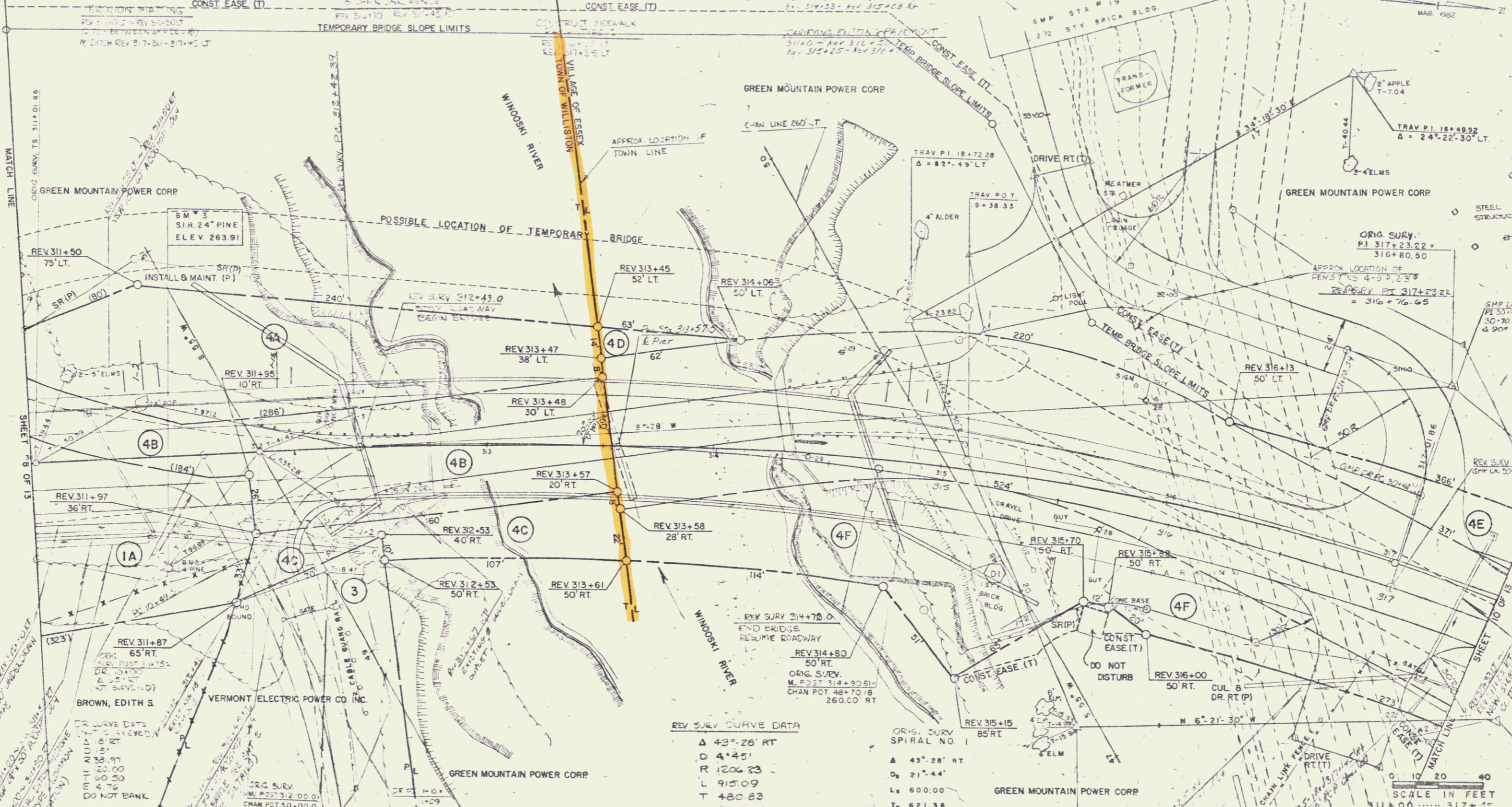
DATUM
VERTICAL NGVD 1929
HORIZONTAL N/A

SCALE IN FEET
0 10 20 30 40 50

301+00.....307+00
DESIGNED BY BRADY DATE 2-19-82
DRAWN BY [signature] DATE 3-1-82
TRACED BY [signature] DATE 3-1-82
WILLISTON - ESSEX
M-EGC BRM 5300(6)
7 OF 13



CONSTRUCTION DETAILS:
 1. STANDARD STEEL BEAM
 2. PORTS TYPE II
 3. REMOVAL AND REPAIR OF EXISTING BRIDGE
 4. EXCAVATION & REMOVAL OF ROAD SURFACES & PAVEMENTS



REV SURV CURVE DATA

Δ	43° 26' RT
D	4° 45'
R	1206.23
L	915.09
T	480.83
E	92.30
BANK	0.044 FT/FT

ORIG. SURV SPIRAL NO. 1

Δ	43° 28' RT
D	21° 44'
L	600.00
T	621.36
E	80.83

DATUM
 VERTICAL NGVD 1929
 HORIZONTAL N/A

SURVEYED BY BRADY DATE 2-82
 DRAWN BY DECELL DATE 3-82
 TRACED BY GLEASON DATE 3-82
 WILLISTON - ESSEX
 M-EGC-BRM5300 (6)
 9 OF 13

313+54

