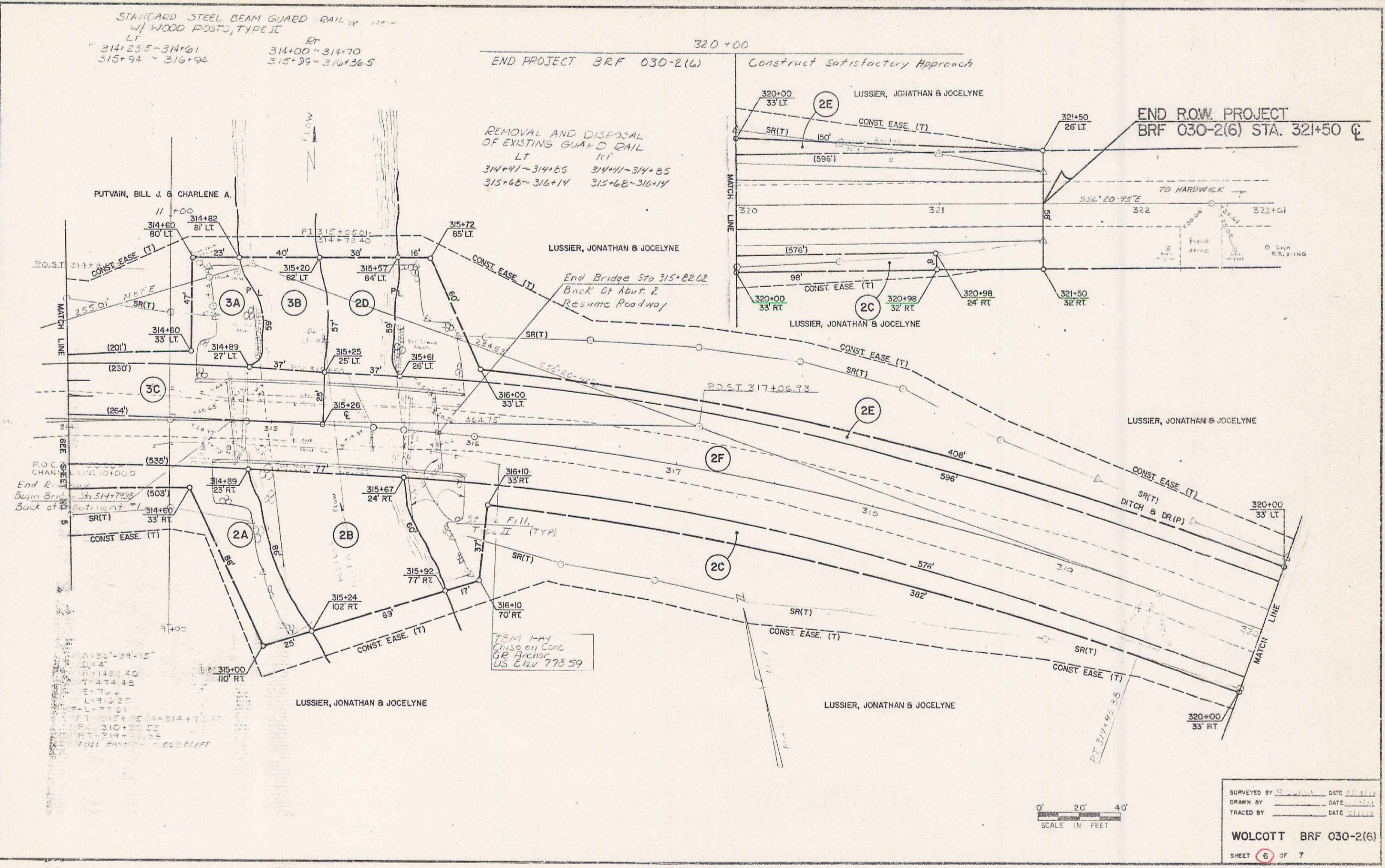


STANDARD STEEL BEAM GUARD RAIL  
W/ WOOD POSTS, TYPE II  
LT 314+23.5-314+61  
315+94 ~ 316+24  
RT 314+00 ~ 314+70  
315+99 ~ 316+36.5

END PROJECT BR# 030-2(6) 320+00  
Construct Satisfactory Approach

REMOVAL AND DISPOSAL  
OF EXISTING GUARD RAIL  
LT 314+41 ~ 314+65  
315+68 ~ 316+14  
RT 314+41 ~ 314+65  
315+68 ~ 316+14

END ROW PROJECT  
BR# 030-2(6) STA. 321+50 CL



POC. CHAN. LINE 10+000  
End Road Sta 314+79.59  
Begin Bridge Back of 314+79.59  
Back of 314+79.59

Δ=36°-24'-15"  
D=4'  
R=148.40  
T=474.48  
E=7.0  
L=910.25  
T-L=77.01  
T-T=315+4.25 (1) 314+7.40  
P=310+25.57  
B=314+27.25  
FULL STATION = 60.5 FEET

ITEM 1-A4  
CHISEL ON CONC  
GR ANCHOR  
US CIVIL 778 59

0' 20' 40'  
SCALE IN FEET

SURVEYED BY \_\_\_\_\_ DATE \_\_\_\_\_  
DRAWN BY \_\_\_\_\_ DATE \_\_\_\_\_  
TRACED BY \_\_\_\_\_ DATE \_\_\_\_\_  
WOLCOTT BR# 030-2(6)  
SHEET 6 OF 7  
D-7

5