

Portland Cem. Conc.  
Sidewalk 5' inch  
22+15 - 22+53 RT.  
23+43 - 23+27 RT.  
23+61 - 23+90 AT.

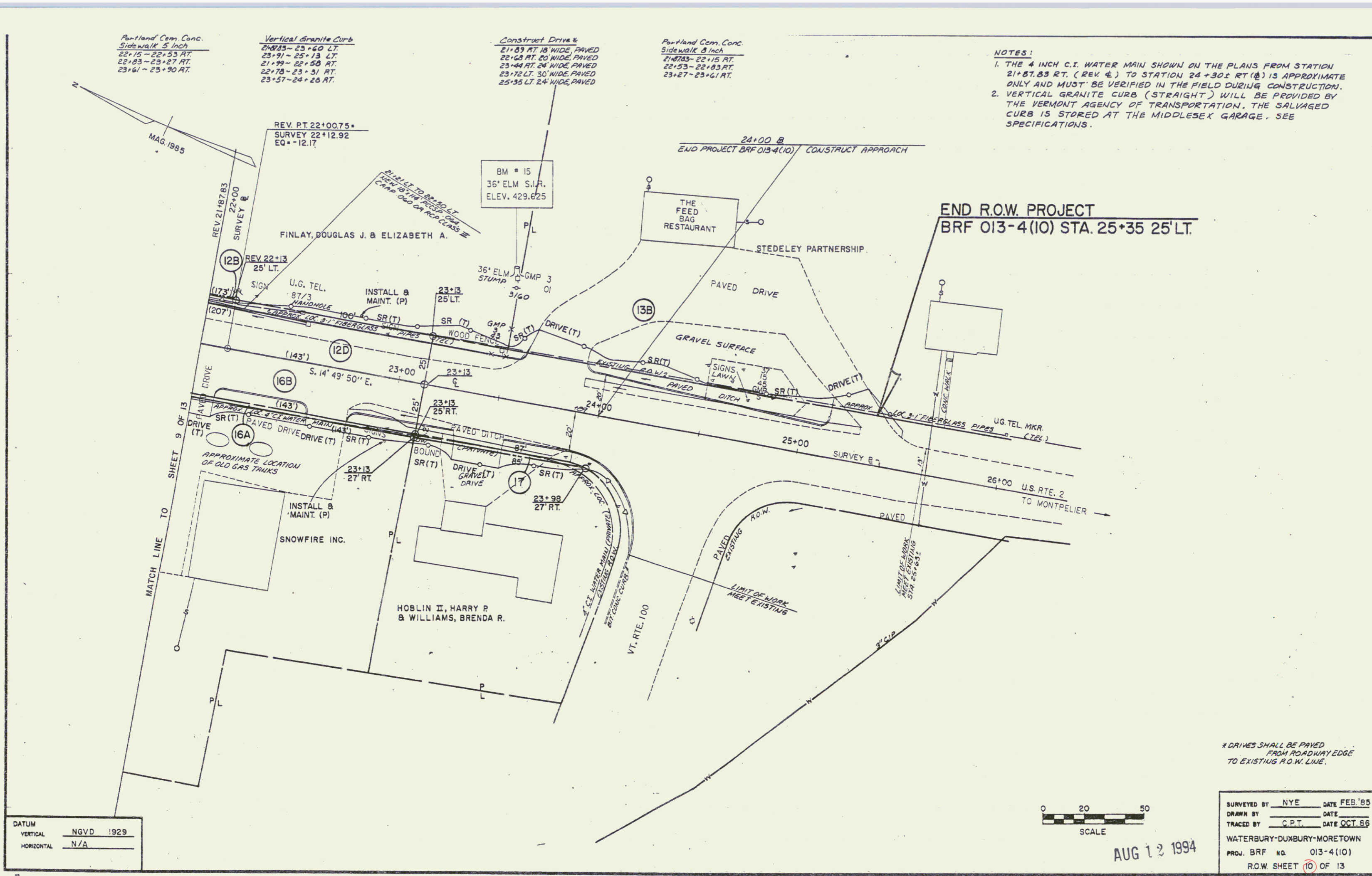
Vertical Granite Curb  
21+85 - 23+60 LT.  
23+91 - 25+13 LT.  
21+99 - 22+58 AT.  
22+78 - 23+31 RT.  
23+57 - 24+28 AT.

Construct Drives  
21+89 RT. 18' WIDE, PAVED  
22+68 RT. 20' WIDE, PAVED  
23+44 RT. 24' WIDE, PAVED  
23+72 LT. 30' WIDE, PAVED  
25+35 LT. 24' WIDE, PAVED

Portland Cem. Conc.  
Sidewalk 8' inch  
21+83 - 22+15 AT.  
22+53 - 22+83 RT.  
23+27 - 23+61 AT.

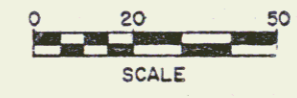
NOTES:

1. THE 4 INCH C.I. WATER MAIN SHOWN ON THE PLANS FROM STATION 21+87.83 RT. (REV. 4) TO STATION 24+30.1 RT. (10) IS APPROXIMATE ONLY AND MUST BE VERIFIED IN THE FIELD DURING CONSTRUCTION.
2. VERTICAL GRANITE CURB (STRAIGHT) WILL BE PROVIDED BY THE VERMONT AGENCY OF TRANSPORTATION. THE SALVAGED CURB IS STORED AT THE MIDDLESEX GARAGE. SEE SPECIFICATIONS.



END R.O.W. PROJECT  
BRF 013-4(10) STA. 25+35 25' LT.

DATUM	
VERTICAL	NGVD 1929
HORIZONTAL	N/A



AUG 13 1994

\*DRIVES SHALL BE PAVED FROM ROADWAY EDGE TO EXISTING R.O.W. LINE.

SURVEYED BY	NYE	DATE	FEB. '85
DRAWN BY		DATE	
TRACED BY	C.P.T.	DATE	OCT. '89
WATERBURY-DUXBURY-MORETOWN			
PROJ. BRF NO.	013-4(10)		
R.O.W. SHEET	10	OF 13	

10