

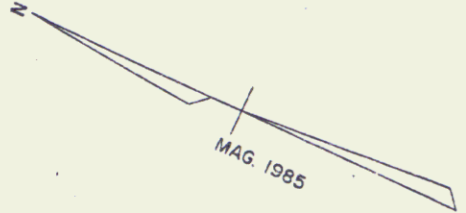
Portland Cem. Conc.
Sidewalk 5 inch
10+00-10+49 LT.
10+71-11+23 LT.
11+45-12+00.05 LT.
10+00-10+17 RT.
10+91-11+17 RT.
11+39-11+87 RT.

Vertical Granite Curb
10+00-10+53 LT.
10+67-11+27 LT.
11+41-12+00.05 LT.
10+00-10+71 RT.
10+87-11+21 RT.
11+35-11+91 RT.

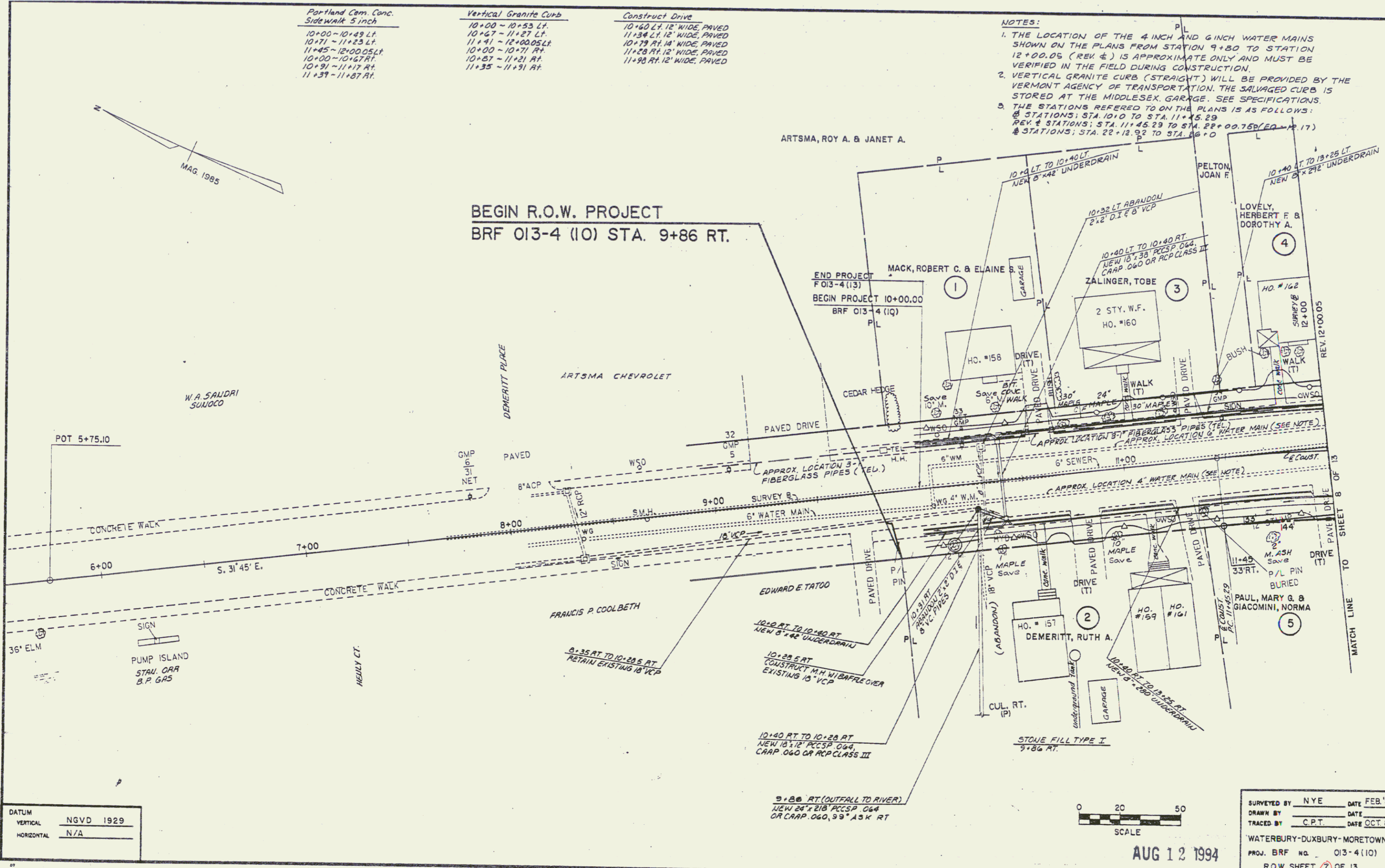
Construct Drive
10+60 LT. 12' WIDE, PAVED
11+34 LT. 12' WIDE, PAVED
10+79 RT. 14' WIDE, PAVED
11+28 RT. 12' WIDE, PAVED
11+98 RT. 12' WIDE, PAVED

NOTES:

1. THE LOCATION OF THE 4 INCH AND 6 INCH WATER MAINS SHOWN ON THE PLANS FROM STATION 9+80 TO STATION 12+00.05 (REV. 6) IS APPROXIMATE ONLY AND MUST BE VERIFIED IN THE FIELD DURING CONSTRUCTION.
2. VERTICAL GRANITE CURB (STRAIGHT) WILL BE PROVIDED BY THE VERMONT AGENCY OF TRANSPORTATION. THE SALVAGED CURB IS STORED AT THE MIDDLESEX GARAGE. SEE SPECIFICATIONS.
3. THE STATIONS REFERRED TO ON THE PLANS IS AS FOLLOWS:
 @ STATIONS; STA. 10+0 TO STA. 11+45.29
 @ STATIONS; STA. 11+45.29 TO STA. 22+00.75 (EQ. 17)
 @ STATIONS; STA. 22+18.92 TO STA. 26+0



BEGIN R.O.W. PROJECT
BRF 013-4 (10) STA. 9+86 RT.



DATUM	NGVD 1929
VERTICAL	
HORIZONTAL	N/A

SURVEYED BY	NYE	DATE	FEB '85
DRAWN BY		DATE	
TRACED BY	C.P.T.	DATE	OCT. 86
WATERBURY-DUXBURY-MORETOWN			
PROJ. BR#	NO. 013-4(10)		
ROW SHEET 7 OF 13			

AUG 12 1994