

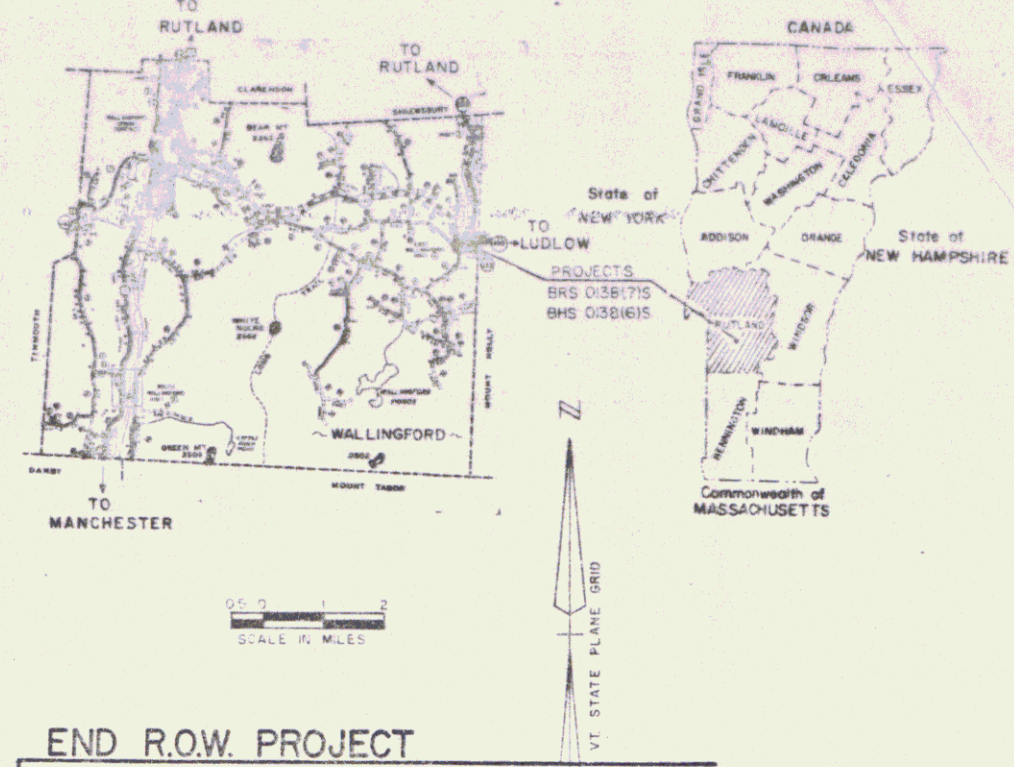
INDEX OF SHEETS

# STATE OF VERMONT AGENCY OF TRANSPORTATION



## PROPOSED IMPROVEMENT TOWN OF WALLINGFORD COUNTY OF RUTLAND VERMONT ROUTE 140 (F.A.S.)

### R.O.W. PLANS



BRS 0138(7)S

BEGINNING AT A POINT 0.145 MILES WESTERLY OF THE WALLINGFORD-MOUNT HOLLY TOWN LINE AND EXTENDING EASTERLY 0.066 MILES.

LENGTH OF ROADWAY 232 FT. + 0.044 MILES  
LENGTH OF BRIDGE 118 FT. + 0.022 MILES  
LENGTH OF PROJECT 350 FT. + 0.066 MILES  
LENGTH OF R.O.W. PROJECT 500 FT. + 0.098 MILES  
WORK TO BE INCLUDED UNDER THIS PROJECT CONSISTS OF REPLACING BRIDGE # 10 OVER THE MILL RIVER AND CONSTRUCTION OF SATISFACTORY ROADWAY APPROACHES.

BHS 0138(6)S

BEGINNING AT A POINT 0.079 MILES WESTERLY OF THE WALLINGFORD-MOUNT HOLLY TOWN LINE AND EXTENDING EASTERLY 0.019 MILES.

LENGTH OF ROADWAY 61.5 FT. + 0.012 MILES  
LENGTH OF BRIDGE 38.5 FT. + 0.007 MILES  
LENGTH OF PROJECT 100 FT. + 0.019 MILES  
LENGTH OF R.O.W. PROJECT 240.79 + 0.046 MILES  
WORK TO BE INCLUDED UNDER THIS PROJECT CONSISTS OF WIDENING BRIDGE # 11 OVER A BRANCH OF THE MILL RIVER TO 34 FT. AND CONSTRUCTION OF SATISFACTORY ROADWAY APPROACHES.

BEGIN R.O.W. PROJECT  
BRS 0138(7)S REV. STA. 326+00 ☐

END R.O.W. PROJECT  
BRS 0138(7)S REV. STA. 331+00 ☐

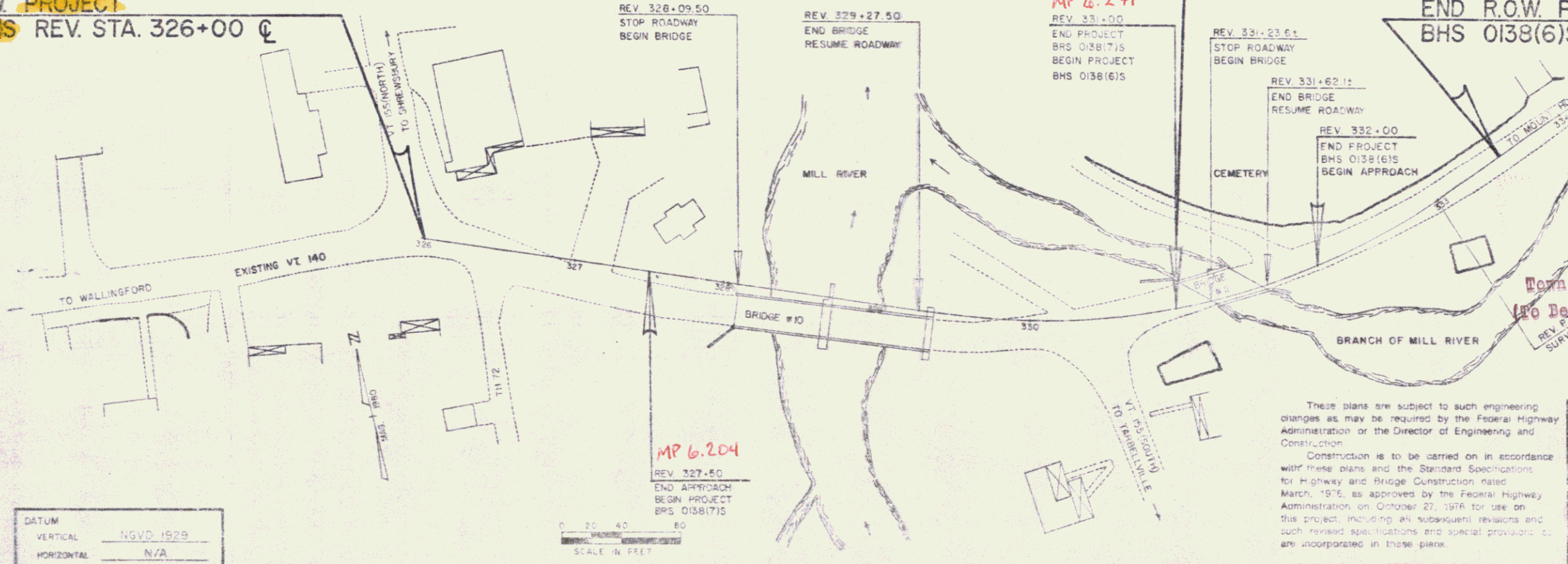
BEGIN R.O.W. PROJECT  
BHS 0138(6)S REV. STA. 331+00 ☐

END R.O.W. PROJECT  
BHS 0138(6)S STA. 333+50 ☐

- CONVENTIONAL SIGNS
- COUNTY LINE
  - TOWN LINE
  - LIMITS OF ACCESS
  - POINT OF ACCESS
  - FENCE LINE
  - STONE WALL
  - TRAVELED WAY
  - GUARD RAIL
  - RAILROAD
  - SURVEY LINE
  - CULVERT
  - POWER POLE
  - TELEPHONE POLE
  - TREES
  - CONTROL OF ACCESS
  - PROPERTY LINE
  - R.O.W. TAKING LINE
  - SLOPE RIGHTS
  - TOP OF CUT
  - TOE OF SLOPE

DATUM  
VERTICAL NGVD 1929  
HORIZONTAL N/A

SCALE IN FEET



RIGHT-OF-WAY DIVISION  
TOWN FILE  
PERPETUAL  
Town of Wallingford  
To Be Returned To R.O.W. Division

These plans are subject to such engineering changes as may be required by the Federal Highway Administration or the Director of Engineering and Construction.  
Construction is to be carried on in accordance with these plans and the Standard Specifications for Highway and Bridge Construction dated March, 1975, as approved by the Federal Highway Administration on October 27, 1976 for use on this project, including all subsequent revisions and such revised specifications and special provisions as are incorporated in these plans.

PROJECT PROCESSED UNDER  
SECONDARY ROAD PLAN

SUBMITTED BY ORDER OF THE STATE TRANSPORTATION BOARD

APPROVED: [Signature] DATE: [Date]

APPROVED: [Signature] DATE: [Date]

DATE: 8-22-83

PROJECT: BRS 0138(7)S  
BHS 0138(6)S

SHEET 1 OF 9 SHEETS

Pin # 78F177



Removal/Disposal of Existing Guardrail  
 Rev. 327+94 ~ 328+09 Rt.  
 Rev. 327+94 ~ 328+09 Rt.  
 Rev. 329+28 ~ 329+77 Rt.  
 Rev. 330+56 ~ 331+02 Lt.

Construct Special Ditch  
 Item 203.15  
 Rev. 327+94 ~ Rev. 328+26 Rt.

Construct Drive BRS 0138(7)S VT.140  
 Rev. 329+90 Lt. 12 Wide (Gravel)

Bridge Rail - Galv. Box Beam  
 Rev Sta. 327+99 Lt ~ 329+41 Lt  
 Rev Sta. 328+09 Rt ~ 329+41 Rt  
 Rev Sta. 331+02 Lt ~ 331+45 Lt  
 Rev Sta. 331+40 Rt ~ 331+80 Rt

Removal/Disposal of Existing Surface  
 Rev. 331+11 ~ 331+26 Rt  
 Rev. 331+65 ~ 332+10 Rt

Construct Drive BRS 0138(6)S VT.140  
 Rev. 331+67 Lt. 12 Wide (Gravel)

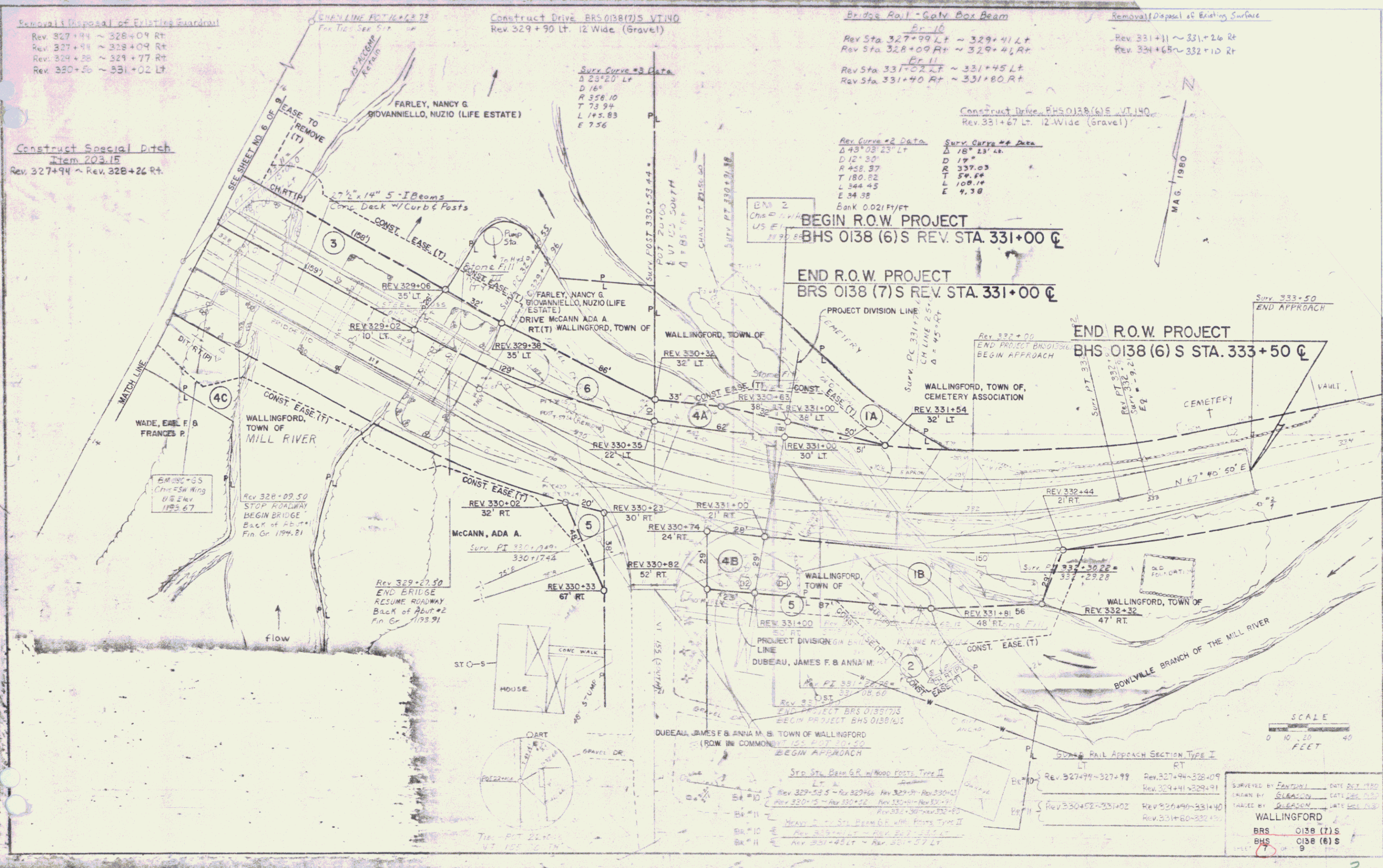
Surv. Curve #2 Data  
 Δ 43° 03' 23" Lt  
 D 12' 30"  
 R 458.37  
 T 180.82  
 L 344.45  
 E 34.38  
 Bank 0.02 Ft/Ft

Surv. Curve #4 Data  
 Δ 18° 23' 48"  
 D 19'  
 R 337.03  
 T 54.64  
 L 108.14  
 E 9.38

BEGIN R.O.W. PROJECT  
 BRS 0138 (6) S REV. STA. 331+00 C

END R.O.W. PROJECT  
 BRS 0138 (7) S REV. STA. 331+00 C

END R.O.W. PROJECT  
 BRS 0138 (6) S STA. 333+50 C



REV. STA.	REV. STA.	REV. STA.	REV. STA.
327+94	327+99	328+09	328+09
329+28	329+41	329+41	329+41
330+56	331+02	331+40	331+40
331+02	331+60	332+10	332+10

SURVEYED BY: FANTONI DATE: DEC. 1980  
 DRAWN BY: GLEASON DATE: DEC. 1980  
 CHECKED BY: GLEASON DATE: DEC. 1980  
 WALLINGFORD  
 BRS 0138 (7) S  
 BRS 0138 (6) S  
 9