

Removal/Disposal of Existing Guardrail
 Rev. 327+94 ~ 328+09 Rt.
 Rev. 327+94 ~ 328+09 Rt.
 Rev. 329+28 ~ 329+77 Rt.
 Rev. 330+56 ~ 331+02 Lt.

Construct Special Ditch
 Item 203.15
 Rev. 327+94 ~ Rev. 328+26 Rt.

Construct Drive BRS 0138(7)S VT.140
 Rev. 329+90 Lt. 12 Wide (Gravel)

Bridge Rail - Galv. Box Beam
 Rev Sta. 327+99 Lt ~ 329+41 Lt
 Rev Sta. 328+09 Rt ~ 329+41 Rt
 Rev Sta. 331+02 Lt ~ 331+45 Lt
 Rev Sta. 331+40 Rt ~ 331+80 Rt

Removal/Disposal of Existing Surface
 Rev. 331+11 ~ 331+26 Rt.
 Rev. 331+65 ~ 332+10 Rt.

Construct Drive BRS 0138(6)S VT.140
 Rev. 331+67 Lt. 12 Wide (Gravel)

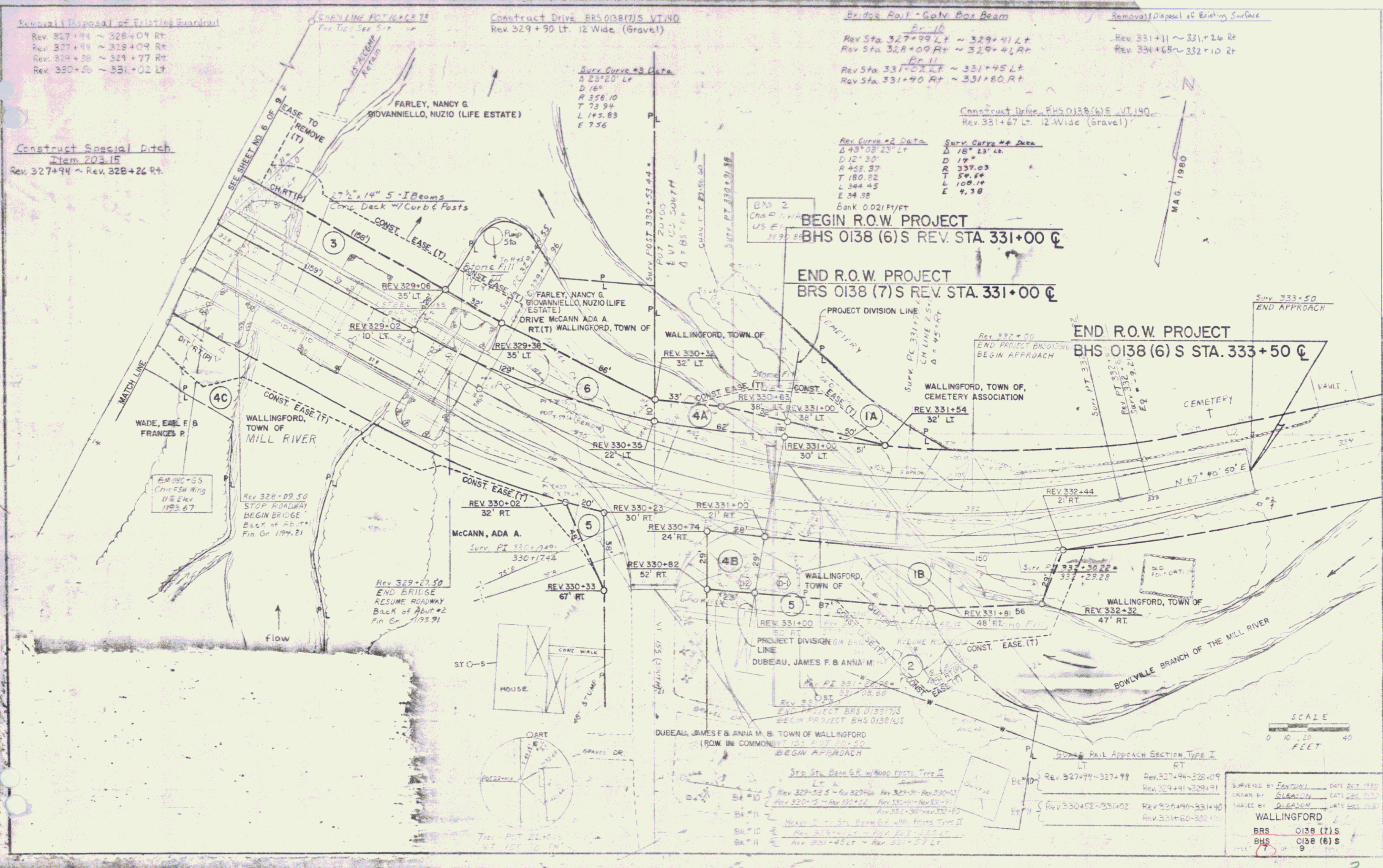
Surv. Curve #2 Data
 Δ 43° 03' 23" Lt
 D 12' 30"
 R 458.37
 T 180.82
 L 344.45
 E 34.38
 Bank 0.02 Ft/Ft

Surv. Curve #4 Data
 Δ 18° 23' 48"
 D 19'
 R 337.03
 T 54.64
 L 108.14
 E 9.38

BEGIN R.O.W. PROJECT
 BHS 0138 (6) S REV. STA. 331+00 C

END R.O.W. PROJECT
 BRS 0138 (7) S REV. STA. 331+00 C

END R.O.W. PROJECT
 BHS 0138 (6) S STA. 333+50 C



SCALE
 0 10 20 40
 FEET

SURVEYED BY FANTONI DATE DEC 1980
 DRAWN BY GLEASON DATE DEC 1980
 CHECKED BY GLEASON DATE DEC 1980
 WALLINGFORD
 BRS 0138 (7) S
 BHS 0138 (6) S
 9