

Vt. Rte #30

INDEX OF SHEETS



STATE OF VERMONT AGENCY OF TRANSPORTATION



PROPOSED IMPROVEMENT

TOWN OF JAMAICA

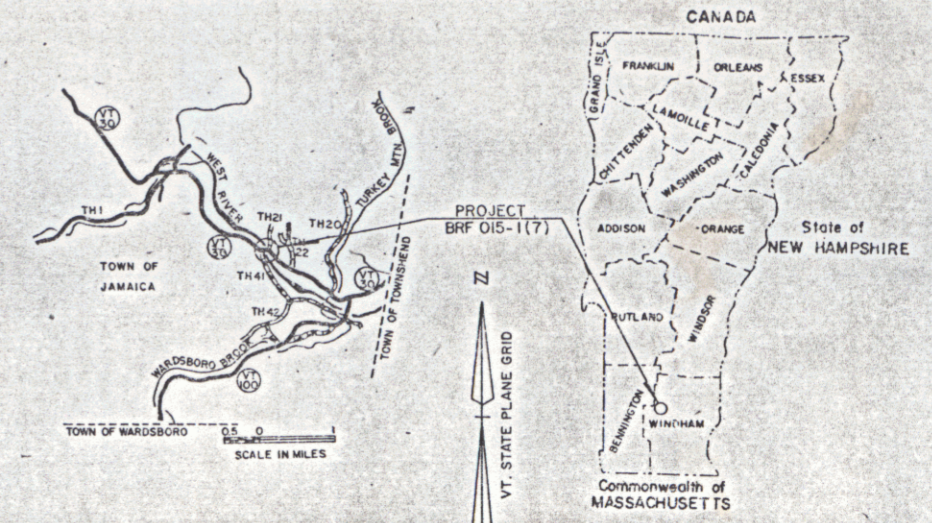
P.O.# 78F173

COUNTY OF WINDHAM

VT. RTE. 30 (F.A.P)

BEGINNING ON VT. ROUTE 30 AT A POINT APPROXIMATELY 1.97 MILES WEST OF THE TOWNSHEND - JAMAICA TOWN LINE AND EXTENDING NORTHWESTERLY 0.369 MILES. LENGTH OF ROW PROJECT 2547.25 FT. = 0.482 MILES
LENGTH OF ROADWAY 1788.06 FT. = 0.329 MILES
LENGTH OF BRIDGE 209.78 FT. = 0.040 MILES
LENGTH OF PROJECT 1947.84 FT. = 0.369 MILES

WORK TO BE PERFORMED UNDER THIS PROJECT INCLUDES REPLACING EXISTING BRIDGE NO. 29 OVER WEST RIVER WITH A NEW STRUCTURE AND IMPROVING APPROACH ALIGNMENT.



BEGIN ROW PROJECT
BRF 015-1(7) STA. 86+00 C

ROW PLANS

BEGIN MAINT. AGREE. AREA NO. 2
REV. STA. 102+57 12' LT. (LENGTH 31')

END ROW PROJECT
BRF 015-1(7) STA. 111+50 C

CONVENTIONAL SIGNS

COUNTY LINE	---
TOWN LINE	- - - - -
LIMITS OF ACCESS	○ ○ ○ ○ ○
POINT OF ACCESS	X
FENCE LINE	— · — · — ·
STONE WALL	— · — · — ·
TRAVELLED WAY	— · — · — ·
RAILROAD	— · — · — ·
SURVEY LINE	— · — · — ·
CULVERT	— · — · — ·
POWER POLE	○
TELEPHONE POLE	○
TREES	X
CONTROL OF ACCESS	///
PROPERTY LINE	— · — · — ·
ROW TAKING LINE	— · — · — ·
SLOPE RIGHTS	○ S.R. △
TOP OF CUT	△
TOE OF SLOPE	○

DATUM

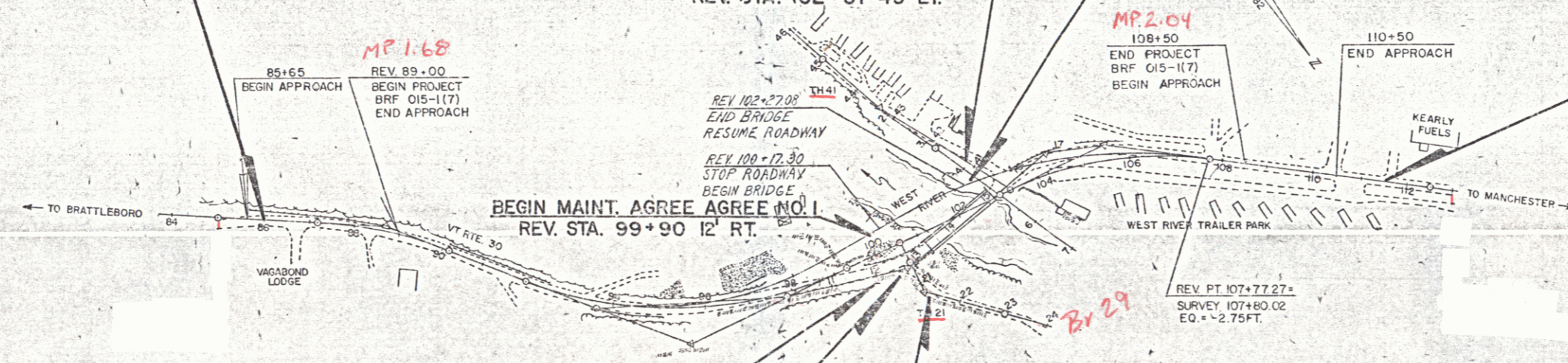
VERTICAL	NGVD 1929
HORIZONTAL	N/A

BEGIN RELINQUISHMENT NO. I
REV. STA. 99+35 103' RT.

END MAINT. AGREE AREA NO. I
REV. STA. 100+00 115' RT. (LENGTH 105')

END MAINT. AGREE AREA NO. 2
REV. STA. 102+57 43' LT.

END RELINQUISHMENT NO. I
REV. STA. 100+34 208' RT. (LENGTH 147')



ALL DRIVES AS INDICATED ON PLANS ARE SUBJECT TO PERMITS PURSUANT TO TITLE 19, SECTION 43, V.S.A.

These plans are subject to such engineering changes as may be required by the Federal Highway Administration or the DIRECTOR OF ENGINEERING
Construction is to be carried on in accordance with these plans and the Standard Specifications for Highway and Bridge Construction dated March, 1976, as approved by the Federal Highway Administration on October 27, 1976 for use on this project, including all subsequent revisions and such revised specifications and special provisions as are incorporated in these plans.

SUBMITTED BY ORDER OF THE STATE TRANSPORTATION BOARD

APPROVED *[Signature]* DATE *6/16/76*
DIRECTOR OF ENGINEERING AND CONSTRUCTION

APPROVED *[Signature]* DATE *7/1/76*
ACTING CHIEF, PROPERTY ADMINISTRATION

JAMAICA
BRF 015-1(7)
SHEET 1 OF 11 SHEETS

STATE OF VERMONT
AGENCY OF TRANSPORTATION
RIGHT-OF-WAY PLANS
DETAIL SHEET

TABLE OF PROJECT PROPERTY ACQUISITION

PARCEL NO.	GRANTOR	SHEET NO.	BEGINNING STATION	ENDING STATION	TAKING	REM.	RIGHTS	TITLE TAKEN	DATE	TOWN OR CITY RECORDED	BK.	PG.	REMARKS
1	MIRAMONTES, JOSEPH G. & PATRICIA A.	7	86+00 RT. REV. 86+75 RT. REV. 87+00 RT.	REV. 88+28 RT. REV. 88+32 RT.	0.12 A±		ALL R.T. & L. DRIVE (T) CULVERT (P) SLOPE (T) (0.03 A±)	WD	5-28-86	JAMAICA	55	281-83	HWY. EASE. VT. RTE. 30 30' GRAVEL M.P. 0165 (1700 SE±)
2A	PRINDLE, PAUL & SUSAN D.	7	86+00 LT. REV. 87+00 LT. REV. 88+55 LT. REV. 93+34 LT. REV. 90+90 LT. REV. 91+04 LT. REV. 93+80 LT.	REV. 94+70 LT. REV. 93+60 LT. REV. 92+95 LT. REV. 95+00 LT.	0.40 A±		DITCH & DRAINAGE (P) DITCH & DRAINAGE (P) DITCH & DRAINAGE (P) CONST. EASE. (T) (0.08 A±) SLOPE (P) (0.14 A±) DRIVE (T) DRAINAGE (P)	WD		JAMAICA			(3500 SE±) 12' GRAVEL M.P. 0178 REPLACES ACCESS TO OLSEN R.O.W.
2B		7	86+00 LT.	REV. 94+55 LT.	0.55 A±		ALL R.T. & L.						HWY. EASE. VT. RTE. 30
				TOTAL	0.95 A±								
3A	CALE, ROBERT L. & RUBY A.	7	REV. 88+28 RT. REV. 88+37 RT. REV. 88+28 RT.	REV. 91+07 RT. REV. 91+07 RT.	0.12 A±			WD	4-29-86	JAMAICA	55	152-53	12' GRAVEL DRIVE M.P. 0168
3B		7	REV. 88+23 RT.	REV. 91+03 RT.	0.16 A±								HWY. EASE. VT. RTE. 30
				TOTAL	0.28 A±	2.0 A±							
4	UNUSED												
5	UNUSED												
6	UNUSED												
7	UNUSED												

TABLE OF REVISIONS

REVISION NO.	SHEET NO.	DESCRIPTION OF REVISION	DATE	MADE BY	APPROVED BY
1	3,7	MIRAMONTES & JOHNSON PARCEL 1 DELETE S. JOHNSON & ADD PATRICIA A. MIRAMONTES PER C.O. 6629	10/11/85	JDP	<i>JDP</i>
2	6	TOWN OF JAMAICA PARCEL 16, ADD TO CONSTRUCT TH41 TO DETAIL SHEET PER C.O. 6630	10/11/85	JDP	<i>JDP</i>
3	4	ANDRUS PARCEL 10B, ADD ALL R.T. & I HWY. EASE. VT. RTE. 30 PER C.O. 6631	10/11/85	JDP	<i>JDP</i>
4	8	WILKINS-ADDED CULVERT (P) AT STA. 103+00LT. ~ 103+08 AND REVISE DRIVE LIMITS FOR DRIVE AT STA. 107+81LT PER CO. 6752	7/17/86	ASJ	<i>ASJ</i>
5	5	Parcel #12 WILKINS Changed width of drive at sta. Rev 107+81 Lt. to 35' wide per C.O. # 6925	5-5-87	JDP	<i>JDP</i>
6	8	PARCEL 12 WILKINS- ADDED TREE WELL AT STA. 40+95RT. AND SAVE TREE AT STA. 41+50LT. PER CO. 6976	7/13/87	ASJ	<i>ASJ</i>
7	6,8	PARCEL NO. 13 MESSINA. ADD PARCEL 13C. THIS NEW PARCEL WILL CONSIST OF: CUL. (P) 102+96 RT. ~ 102+98 RT., CUL. (P) 103+67 RT. ~ 103+00 RT., DITCH (P) 103+67 RT. ~ 109+50 RT. PER C.O. 7508	12-13-88	M.J.R.	<i>M.J.R.</i>

MADE BY: DEM DATE: 8/23/85
CHECKED BY: LWB DATE: 8/26/85

DR. RT - DRAINAGE RIGHT
DIT. RT - DITCHING RIGHT
CH. RT - CHANNEL RIGHT
DRIVE RT - DRIVE RIGHT
CUL. RT - CULVERT RIGHT
D - DEMOLITION OR REMOVAL
W - WATER SOURCES

PRESENT R.O.W.
- - - - - TAKING WITHOUT ACCESS
- - - - - TAKING WITHOUT ACCESS ALONG PROPERTY LINES
- - - - - TAKING WITH ACCESS
(P) PERMANENT EASEMENT
(T) TEMPORARY EASEMENT

LEGEND
- - - - - CONST. EASE. CONST. EASEMENT
SR - SR - SLOPE RIGHTS
P - P - PROPERTY LINE
- Δ - Δ - TOP OF CUT
O - O - TOP OF SLOPE

APPROVED *Lawrence Blinn* DATE: 8-28-88
CHIEF OF PLANS & TITLES

PROJECT JAMAICA
NO. BRF 015-1(7)
SHEET 3 OF 11

ROW

STATE OF VERMONT
AGENCY OF TRANSPORTATION
RIGHT-OF-WAY PLANS
DETAIL SHEET

TABLE OF PROJECT PROPERTY ACQUISITION

PARCEL NO.	GRANTOR	SHEET NO.	BEGINNING STATION	ENDING STATION	TAKING	REM.	RIGHTS	TITLE TAKEN	DATE	TOWN OR CITY RECORDED	BK.	PG.	REMARKS
8A	GALE, RUBY A.	7	REV. 91+03 RT.	REV. 95+64 RT.	0.18 A±		CONST. EASE. (T) (0.14 A±) SLOPE (T) (50 S.E±) SLOPE (T) (0.03 A±) SLOPE (P) (0.04 A±) DRIVE (T)	WD	4-29-86	JAMAICA	55	150-51	(1100 S.E±) (1800 S.E±) 16' GRAVEL M.P. 0175
			REV. 91+07 RT.	REV. 95+64 RT.									
8B		7	REV. 90+97 LT.	REV. 95+64 RT.	0.30 A±		ALL R.T. & L.						HWY. EASE. VT. RTE. 30
			TOTAL		0.48 A±								
9A	OLSEN, ROBERT O. & M. CLAIRE — LESSOR OLSEN, OLE & ALMA H. — LESSEE	7, 8	REV. 94+55 LT.	REV. 101+06 RT.	1.10 A±		CULVERT, DITCH, & DRAINAGE (P) DRIVE (T) CONST. EASE. (T) (0.03 A±) CHANNEL (P) (0.01 A±)	WD		JAMAICA			12' GRAVEL M.P. 0178 (SEE PARCEL 2) (1100 S.E±) (360 S.E±)
			REV. 95+00 LT.	REV. 96+85 LT.									
9B		7, 8	REV. 94+43 RT.	REV. 101+19 RT.	0.40 A±		ALL R.T. & L.						HWY. EASE. VT. RTE. 30
			TOTAL		1.50 A±	1.8 A±							
10A	ANDRUS, WILLIAM B.	7, 8	REV. 99+35 RT.	REV. 100+02 RT.	0.05 A±		CONST. EASE. (T) (0.06 A±) SLOPE (P) (0.20 A±)	OPTION	8-5-86	JAMAICA	55	489-91	(2100 S.E±) (2700 S.E±)
10B		7, 8	REV. 95+64 RT.	REV. 100+05 RT.	0.28 A±		ALL R.T. & L. CONST. EASE. (T) (0.10 A±) SLOPE (P) (0.60 A±)						HWY. EASE. VT. RTE. 30 12' GRAVEL DRIVE M.P. 0187
			REV. 95+64 RT.	REV. 98+80 RT.									
			TOTAL		0.33 A±								

TABLE OF REVISIONS

REVISION NO.	SHEET NO.	DESCRIPTION OF REVISION	DATE	MADE BY	APPROVED BY

MADE BY: DEM DATE 8/23/85
CHECKED BY: LWB DATE 8/23/85

DR. RT. — DRAINAGE RIGHT
DIT. RT. — DITCHING RIGHT
CH. RT. — CHANNEL RIGHT
DRIVE RT. — DRIVE RIGHT
CUL. RT. — CULVERT RIGHT
Ⓚ — DEMOLITION OR REMOVAL
W — WATER SOURCES

————— PRESENT R.O.W.
- - - - - TAKING WITHOUT ACCESS
- - - - - TAKING WITHOUT ACCESS ALONG PROPERTY LINES
- - - - - TAKING WITH ACCESS
(P) PERMANENT EASEMENT
(T) TEMPORARY EASEMENT

LEGEND
- - - - - CONST. EASE. ——— CONST. EASEMENT
—SR—SR— SLOPE RIGHTS
—P—P— PROPERTY LINE
—△—△—△— TOP OF CUT
—○—○—○— TOE OF SLOPE

APPROVED James W. Blinn DATE 8-18-85
CHIEF OF PLANS & TITLES

PROJECT JAMAICA
NO. BRF 015-1 (7)
SHEET 4 OF 11

STATE OF VERMONT
AGENCY OF TRANSPORTATION
RIGHT-OF-WAY PLANS
DETAIL SHEET

TABLE OF PROJECT PROPERTY ACQUISITION

PARCEL NO.	GRANTOR	SHEET NO.	BEGINNING STATION	ENDING STATION	TAKING	REM.	RIGHTS	TITLE TAKEN	DATE	TOWN OR CITY RECORDED	BK.	PG.	REMARKS
13A	MESSINA, PETER C. & CATHERINE	8	REV. 103 + 90 RT. REV. 104 + 25 RT. REV. 105 + 15 RT.	REV. 107 + 77 RT. REV. 105 + 80 RT. REV. 107 + 00 RT.	0.07A±		DRIVE (T) SLOPE (T) (0.01A±)	WD	7/10/87	JAMAICA	57	35-16	(2960 S.F.±) TO RECONST. DRIVE & TURN AROUND (485 S.F.±)
13B		8	REV. 102 + 65 RT. REV. 103 + 20 RT. REV. 107 + 70 RT. 110 + 80 RT.	111 + 50 RT. REV. 104 + 30 RT. 108 + 30 RT.	0.50A±		ALL RT&I (P) DITCH (P) SLOPE (T) (0.02A±) (120 S.F.±)						HWY. EASE. VT. RT. 100 (825 S.F.±) 60' GRAVEL DRIVE M.P. 0213
13C			REV. 102 + 96 RT. REV. 103 + 67 RT. REV. 103 + 67 RT.	REV. 102 + 98 RT. REV. 105 + 00 RT. REV. 109 + 50 RT.			CUL. (P) CUL. (P) DITCH (P)	WDOE	2/07/89		60	399-00	
				TOTAL	0.57 A±								
14	UNUSED												
15	CENTRAL VT. PUBLIC SERVICE CORP.	8	109 + 50 LT. 110 + 38 LT.	111 + 50 LT.	0.11 A±		ALL RT&I	WD		JAMAICA			HWY. EASE. VT. RT. 100 30' GRAVEL DRIVE M.P. 0212
16A	TOWN OF JAMAICA	8	REV. 100 + 02 RT.	TH.21 23 + 50 LT.			APPROACH (T)	QCD	5/28/86	JAMAICA	55	284-85	T.H. 21
16B		8	TH.41 44+00 CL.	REV. 103+11 LT.			APPROACH (T)						T.H. 41
17	CENTRAL VERMONT PUBLIC SERVICE CORP.	8											UTILITY
18	NEW ENGLAND TELEPHONE CO. RELINQUISHMENT NO. 1 MAINT. AGREE. AREA NO. 1 MAINT. AGREE. AREA NO. 2	8	REV. 99 + 35 RT. REV. 99 + 90 RT. REV. 102 + 57 LT.	REV. 100 + 34 RT. REV. 100 + 00 RT. REV. 102 + 57 LT.									UTILITY T.H. 21 (147') T.H. 21 (105') T.H. 41 (31')

TABLE OF REVISIONS

REVISION NO.	SHEET NO.	DESCRIPTION OF REVISION	DATE	MADE BY	APPROVED BY

MADE BY: A S J DATE: 8/28/85
CHECKED BY: L W B DATE: 8/26/85

DR. RT. - DRAINAGE RIGHT
DIT. RT. - DITCHING RIGHT
CH. RT. - CHANNEL RIGHT
DRIVE RT. - DRIVE RIGHT
CUL. RT. - CULVERT RIGHT
ⓓ - DEMOLITION OR REMOVAL
W - WATER SOURCES

PRESENT R.O.W.
/// - TAKING WITHOUT ACCESS
/// P - TAKING WITHOUT ACCESS ALONG PROPERTY LINES
- - - - - TAKING WITH ACCESS
(P) - PERMANENT EASEMENT
(T) - TEMPORARY EASEMENT

LEGEND
--- CONST. EASE --- CONST. EASEMENT
--- SR --- SR --- SLOPE RIGHTS
--- P --- P --- PROPERTY LINE
--- Δ --- Δ --- Δ --- TOP OF CUT
--- O --- O --- O --- TOE OF SLOPE

APPROVED Louisa A. Blair DATE 8-28-85
CHIEF OF PLANS & TITLES

PROJECT JAMAICA
NO. BRF 015-1 (7)
SHEET 6 OF 11

RDW

Construct Drive
Rev 86+25 RL
Rev 88+37 RL
Rev 92+10 RL
Rev 93+86 LT

Removal & Disposal of
Existing Guard Rail
Rev 85+25 - 85+85 LT
Rev 90+12 - 90+92 LT
Rev 93+55 - 93+15 RL
Rev 94+93 - 94+25 LT

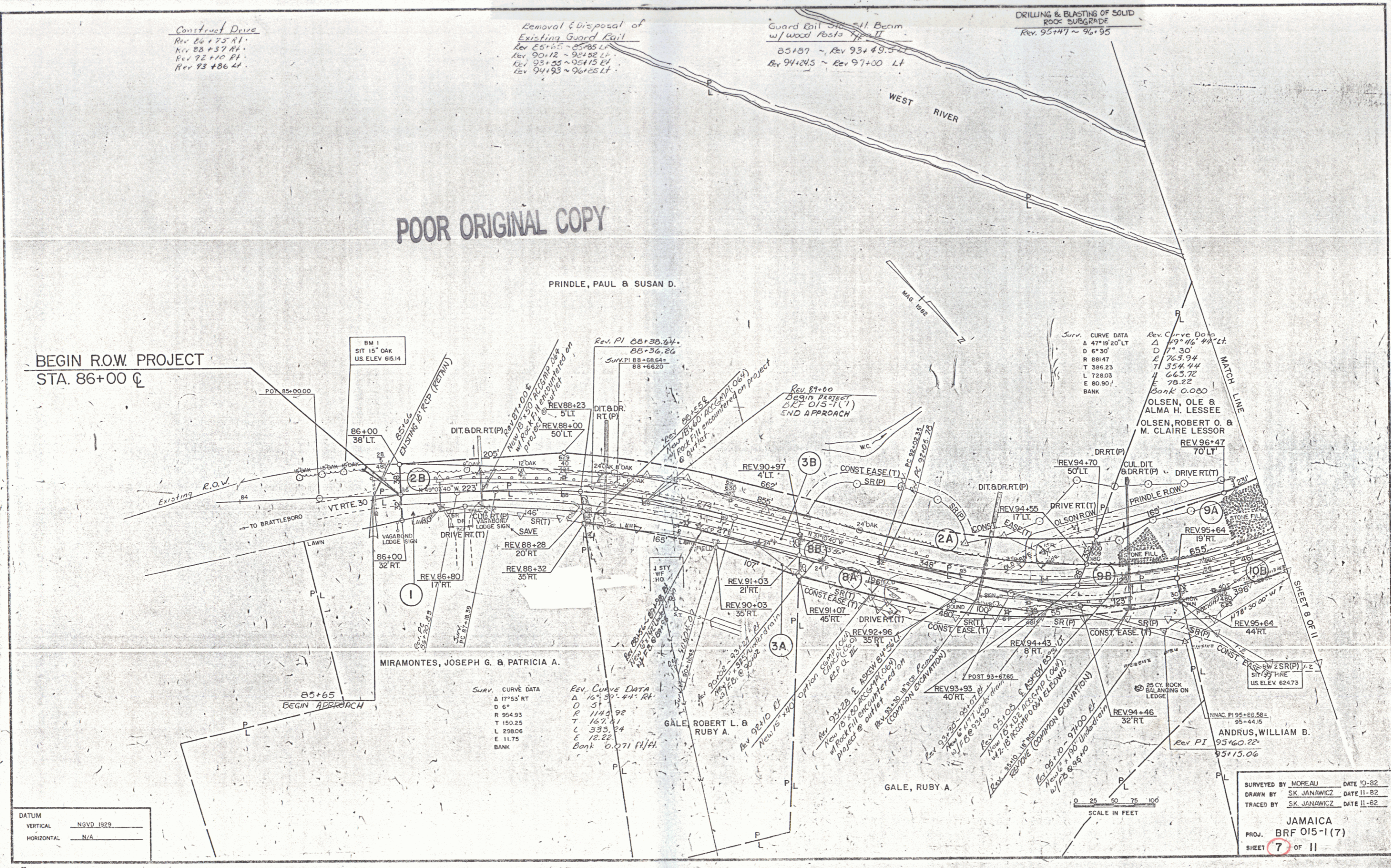
Guard Rail on Hill Beam
w/wood Posts
85+87 ~ Rev 93+49.5
Rev 94+245 ~ Rev 97+00 LT

DRILLING & BLASTING OF SOLID
ROCK SUBGRADE
Rev 95+77 ~ 96+95

POOR ORIGINAL COPY

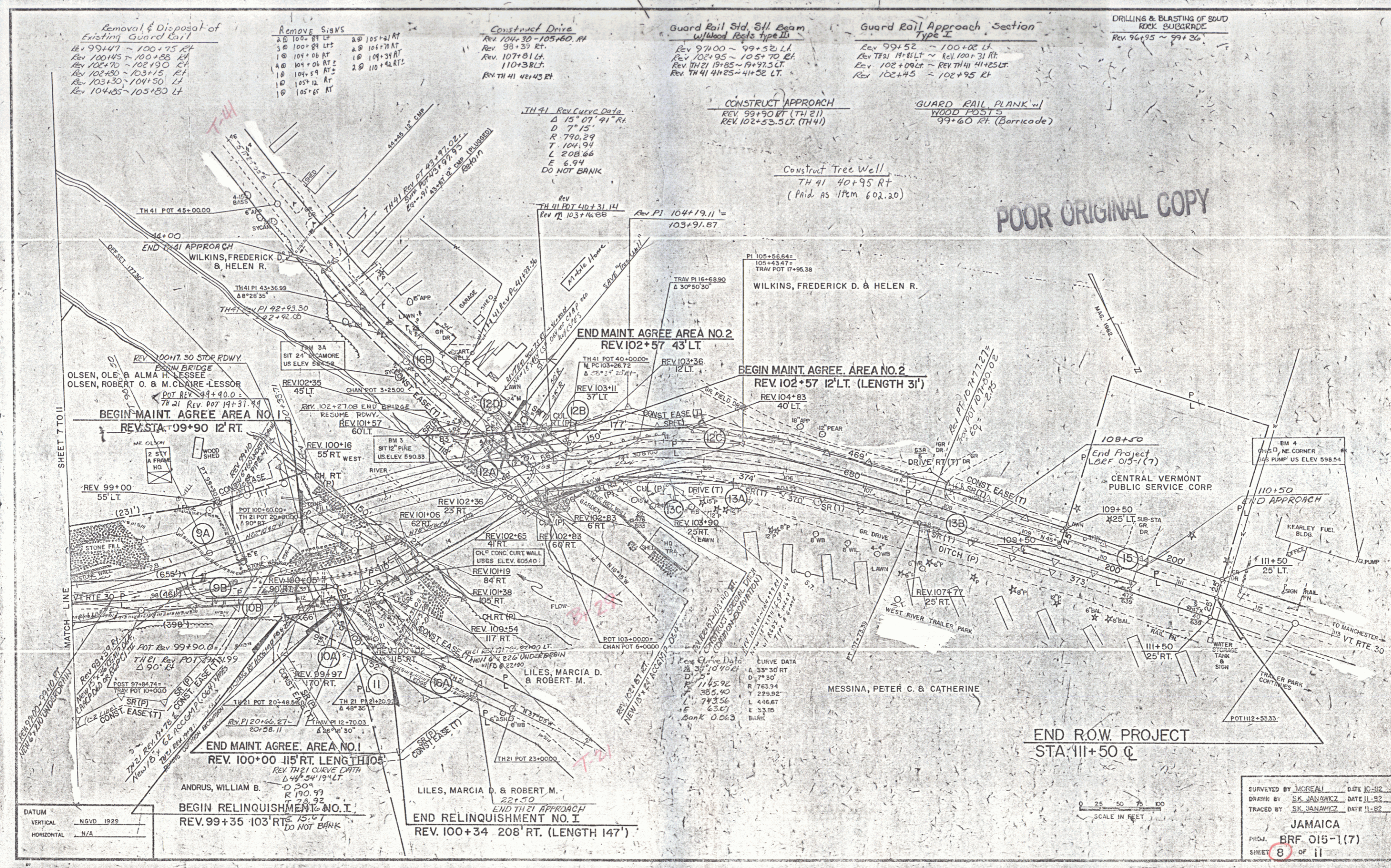
PRINDLE, PAUL & SUSAN D.

BEGIN R.O.W. PROJECT
STA. 86+00 C



DATUM
VERTICAL NGVD 1929
HORIZONTAL N/A

SURVEYED BY MOREAU DATE 10-82
DRAWN BY SK JANAWICZ DATE 11-82
TRACED BY SK JANAWICZ DATE 11-82
JAMAICA
PROJ. BR F 015-1 (7)
SHEET 7 OF 11



Removal & Dispose of Existing Guard Rail
 Rev 99+47 ~ 100+75 RT
 Rev 100+45 ~ 100+85 LT
 Rev 102+70 ~ 102+90 LT
 Rev 103+30 ~ 104+50 LT
 Rev 104+55 ~ 105+80 LT

Remove SIGMS
 2 @ 105+21 AT
 3 @ 100+88 LT
 1 @ 104+08 AT
 2 @ 104+34 AT
 1 @ 104+08 AT
 2 @ 110+42 RT
 1 @ 105+12 AT
 1 @ 105+65 AT

Construct Drive
 Rev 104+30 - 105+60 RT
 Rev 98+33 RT
 Rev 107+81 LT
 110+3 BLT
 Rev TH 41 42+45 RT

Guard Rail Std. 5 1/2 Beam w/wood Posts Type III
 Rev 97+00 ~ 99+52 LT
 Rev 102+95 ~ 105+70 LT
 Rev TH 21 19+85 ~ 19+73 LT
 Rev TH 41 44+25 ~ 44+52 LT

Guard Rail Approach Section Type I
 Rev 99+52 ~ 100+02 LT
 Rev TH 21 17+85 LT ~ Rev 100+31 RT
 Rev 102+09 LT ~ Rev TH 41 41+25 LT
 Rev 102+45 ~ 102+95 LT

DRILLING & BLASTING OF SOUND ROCK SUBGRADE
 Rev 96+95 ~ 99+36

TH 71 Rev Curve Data
 Δ 15° 07' 41" RT
 D 7° 15'
 R 790.29
 T 104.94
 L 208.66
 E 6.94
 DO NOT BANK

CONSTRUCT APPROACH
 REV 99+90 RT (TH 21)
 REV 102+53.50 (TH 41)

GUARD RAIL PLANK w/ WOOD POSTS
 99+60 RT (Barricade)

Construct Tree Well
 TH 41 40+95 RT
 (Paid As Item 602.20)

POOR ORIGINAL COPY

SHEET 7 TO 11

DATUM
 VERTICAL NGVD 1923
 HORIZONTAL N/A

SURVEYED BY MOREAU DATE 10-82
 DRAWN BY SK JANAWICZ DATE 11-82
 TRACED BY SK JANAWICZ DATE 11-82
 PROJ. BRF 015-1(7)
 SHEET 8 OF 11