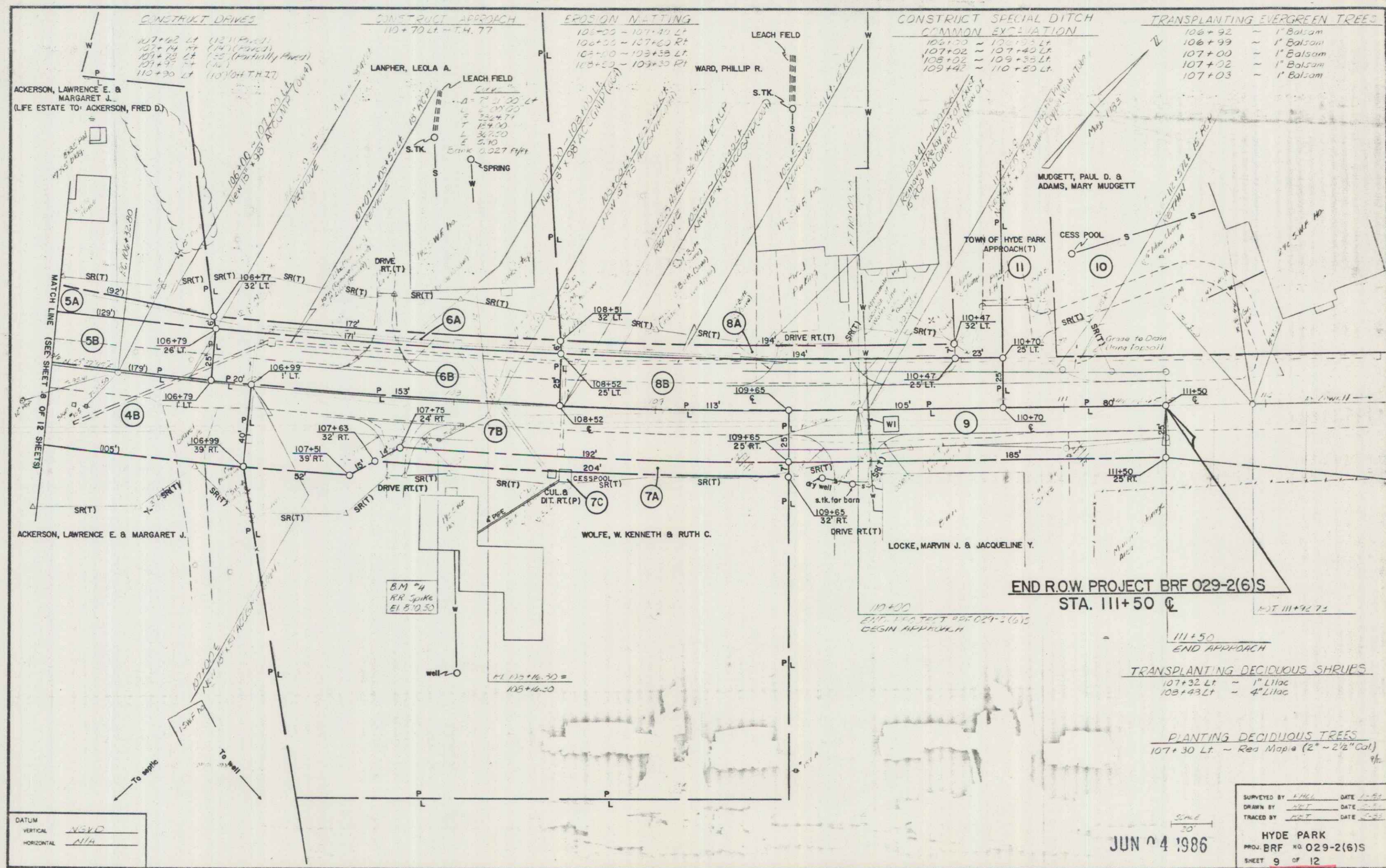


POOR ORIGINAL COPY



CONSTRUCT DRIVES
 107+02 Lt (12'11" Paved)
 107+14 Rt (14' Paved)
 107+28 Lt (15' (partially paved))
 107+35 Lt (15')
 110+30 Lt (11'10" TH TH 17)

CONSTRUCT APPROACH
 110+70 Lt - T.H. 77

EROSION MATTING
 106+50 - 107+30 Lt
 106+50 - 107+30 Rt
 102+10 - 103+30 Lt
 103+50 - 109+30 Rt

CONSTRUCT SPECIAL DITCH
COMMON EXCAVATION
 105+00 - 106+00 Lt
 107+02 - 107+40 Lt
 108+02 - 109+35 Lt
 109+42 - 110+50 Lt

TRANSPLANTING EVERGREEN TREES
 106+92 - 1" Balsam
 106+99 - 1" Balsam
 107+00 - 1" Balsam
 107+02 - 1" Balsam
 107+03 - 1" Balsam

ACKERSON, LAWRENCE E. & MARGARET J. (LIFE ESTATE TO ACKERSON, FRED D.)

LANPHER, LEOLA A. LEACH FIELD

WARD, PHILLIP R.

MUGGETT, PAUL D. & ADAMS, MARY MUGGETT

TOWN OF HYDE PARK APPROACH(T)

WOLFE, W. KENNETH & RUTH C.

LOCKE, MARVIN J. & JACQUELINE Y.

END R.O.W. PROJECT BRF 029-2(6)S
 STA. 111+50

TRANSPLANTING DECIDUOUS SHRUBS
 107+32 Lt - 1" Liliac
 108+43 Lt - 4" Liliac

PLANTING DECIDUOUS TREES
 107+30 Lt - Red Maple (2" - 2 1/2" Cal.)

DATUM
 VERTICAL NAD 83
 HORIZONTAL N114

JUN 4 1986

SURVEYED BY A.M.H. DATE 1-85
 DRAWN BY A.M.H. DATE 1-85
 TRACED BY A.M.H. DATE 1-85
 HYDE PARK
 PROJ. BRF NO. 029-2(6)S
 SHEET 9 OF 12