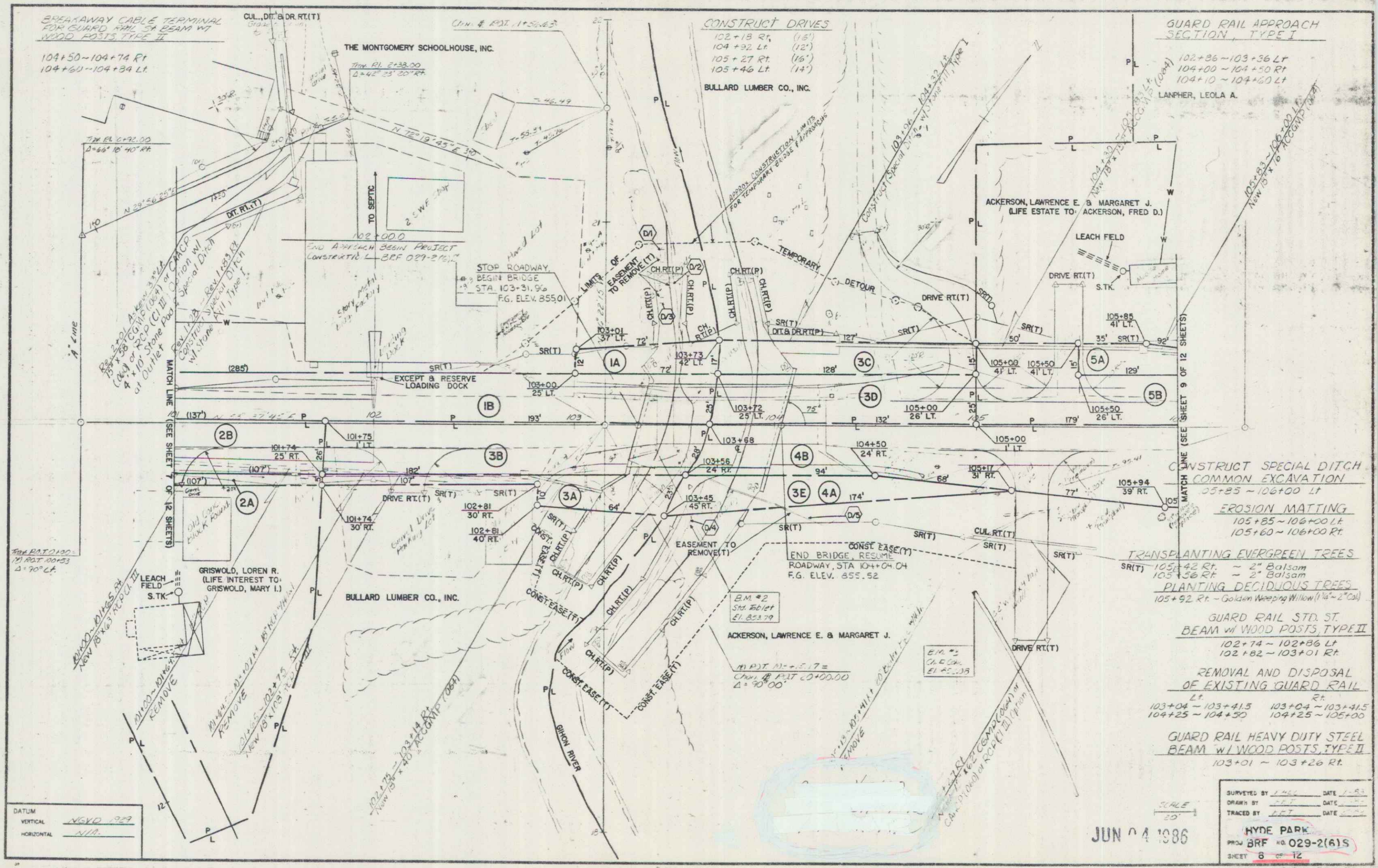


POOR ORIGINAL COPY



SPEARAWAY CABLE TERMINAL
FOR GUARD RAIL W/ 54 BEAM W/ 11
WOOD POSTS TYPE II
104+50-104+74 Rt
104+60-104+84 Lt

THE MONTGOMERY SCHOOLHOUSE, INC.
102+00.0
END APPROACH BEAM PROJECT
CONSTRUCTION L. BR 029-2(1)

CONSTRUCT DRIVES
102+18 Rt (15')
104+32 Lt (12')
105+27 Rt (16')
105+46 Lt (14')

BULLARD LUMBER CO., INC.

GUARD RAIL APPROACH
SECTION, TYPE I
102+86-103+36 Lt
104+00-104+50 Rt
104+10-104+60 Lt

LANPHER, LEOLA A.

ACKERSON, LAWRENCE E. & MARGARET J.
(LIFE ESTATE TO ACKERSON, FRED D.)

CONSTRUCT SPECIAL DITCH
COMMON EXCAVATION
105+85-106+00 Lt

EROSION MATTING
105+85-106+00 Lt
105+60-106+00 Rt

TRANSPLANTING EVERGREEN TREES
SR(T) 105+42 Rt - 2" Balsam
105+50 Rt - 2" Balsam

PLANTING DECIDUOUS TREES
105+92 Rt - Golden Weeping Willow (1 1/2" - 2" Cal)

GUARD RAIL STD. ST.
BEAM W/ WOOD POSTS TYPE II
102+74 - 102+86 Lt
102+82 - 103+01 Rt

REMOVAL AND DISPOSAL
OF EXISTING GUARD RAIL
Lt
103+04 - 103+41.5 103+04 - 103+41.5
104+25 - 104+90 104+25 - 105+00

GUARD RAIL HEAVY DUTY STEEL
BEAM W/ WOOD POSTS TYPE II
103+01 - 103+26 Rt

DATUM
VERTICAL NGVD 1929
HORIZONTAL N.T.M.

SCALE
20'

JUN 04 1986

SURVEYED BY J.P.L. DATE 1-81
DRAWN BY J.P.T. DATE 1-81
TRACED BY J.P.T. DATE 1-81

HYDE PARK
PROJ BRF NO 029-2(6)S
SHEET 6 OF 12