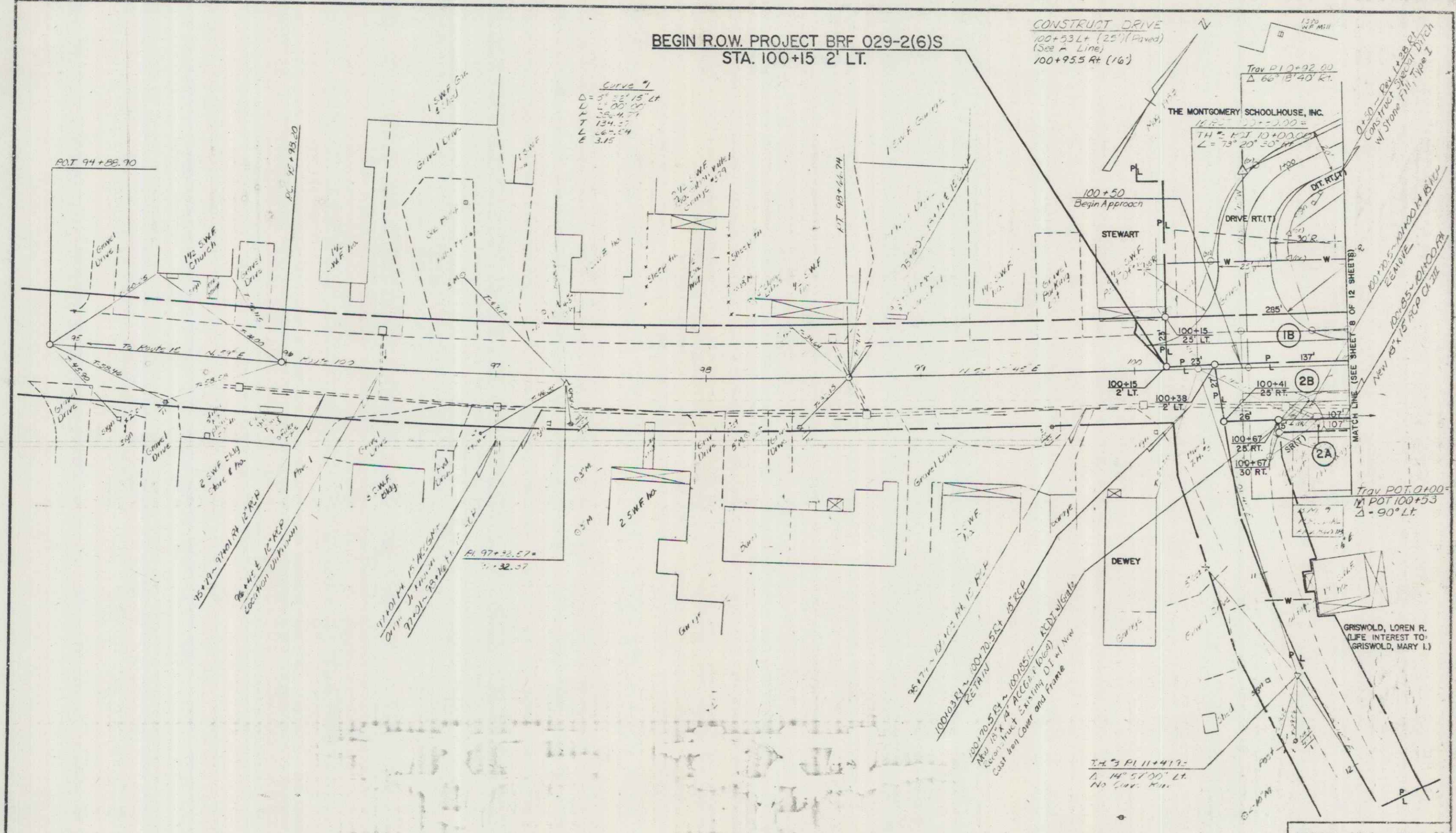


BEGIN R.O.W. PROJECT BR# 029-2(6)S
 STA. 100+15 2' LT.

CONSTRUCT DRIVE
 100+53 Lt (25') (Paved)
 (See A Line)
 100+95.5 Rt (16')

Curve 7
 D = 22.15' Lt
 L = 20.00' Lt
 T = 38.47'
 E = 134.57'
 C = 3.15'



DATUM
 VERTICAL NVD 1929
 HORIZONTAL N/A

JUN 04 1986

SURVEYED BY CALL DATE 1-83
 DRAWN BY ... DATE ...
 TRACED BY ... DATE ...
 HYDE PARK
 PROJ BR# 029-2(6)S
 SHEET 7 OF 12