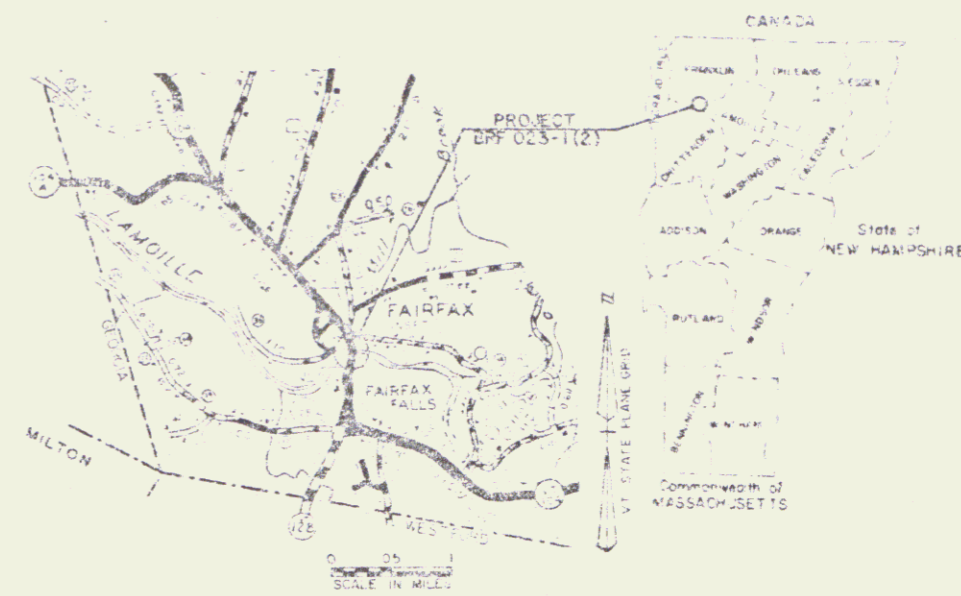


STATE OF VERMONT  
AGENCY OF TRANSPORTATION



PROPOSED IMPROVEMENT  
**TOWN OF FAIRFAX**  
COUNTY OF FRANKLIN  
**VT. RTE. 104 (EAP)**



R.O.W. PLANS

BEGINNING AT A POINT ON VT. RTE. 104 IN THE TOWN OF FAIRFAX 0.972 MILES  
NORTHEASTERLY OF THE CAMBRIDGE-FAIRFAX TOWN LINE AND EXTENDING  
NORTHERLY 0.242 MILES

LENGTH OF ROADWAY 1011.5 FT. = 0.191 MILES  
LENGTH OF BRIDGE 171.12 FT. = 0.032 MILES  
LENGTH OF PROJECT 1180.62 FT. = 0.223 MILES  
LENGTH OF R.O.W. PROJECT 1357.51 FT. = 0.257 MILES

**PROJECT DESCRIPTION**  
Work to be performed under this Project includes widening of existing bridge and construction of a new bridge to improve traffic flow and provide for the needs of existing equipment, drainage, culverts, and guard rails.

END R.O.W. PROJECT  
BRF 023-1(2) 275+43 CL

261+75  
BEGIN APPROACH  
MP 4.768  
262+50 END APPROACH  
BEGIN PROJECT  
BRF 023-1(2)

BEGIN R.O.W. PROJECT  
BRF 023-1(2) 261+75 CL

274+39.51  
END PROJECT  
BRF 023-1(2)  
BEGIN APPROACH  
MP 5.194

CONVENTIONAL SIGNS

COUNTY LINE	---
TOWN LINE	---
LINE OF ACCESS	---
POINT OF ACCESS	X
FENCE LINE	---
STONE WALL	---
TRAVELLED WAY	---
GUARD RAIL	---
RAILROAD	---
SURVEY LINE	---
CULVERT	---
POWER POLE	---
TELEPHONE POLE	---
TRAIL	---
DIRT ROAD	---
PROPERTY LINE	---
ADJ. TAKING LINE	---
DRIVE RIGHTS	---
TOP OF CUT	---
TOP OF SLOPE	---

DATUM  
VERTICAL: NAVD 83  
HORIZONTAL: NCA

SCALE IN FEET  
APPROXIMATE

These plans are subject to such engineering changes as may be required by the Federal Highway Administration or the Director of Engineering and Construction.  
Construction is to be carried on in accordance with these plans and the standard specifications for highway and bridge construction dated March 1970 as approved by the Federal Highway Administration on October 21, 1970 for use on this project, unless all supplementary revisions and such revised specifications and other drawings are incorporated in these plans.

OCT 3 1988

Pin # 78 F168

APPROVED BY: [Signature] DATE: 2-6-85  
DIRECTOR OF ENGINEERING AND CONSTRUCTION

APPROVED BY: [Signature] DATE: 2-28-88  
CHIEF PROPERTY ADMINISTRATION

FAIRFAX BRF 023-1(2)  
SHEET 1 OF 10 SHEETS

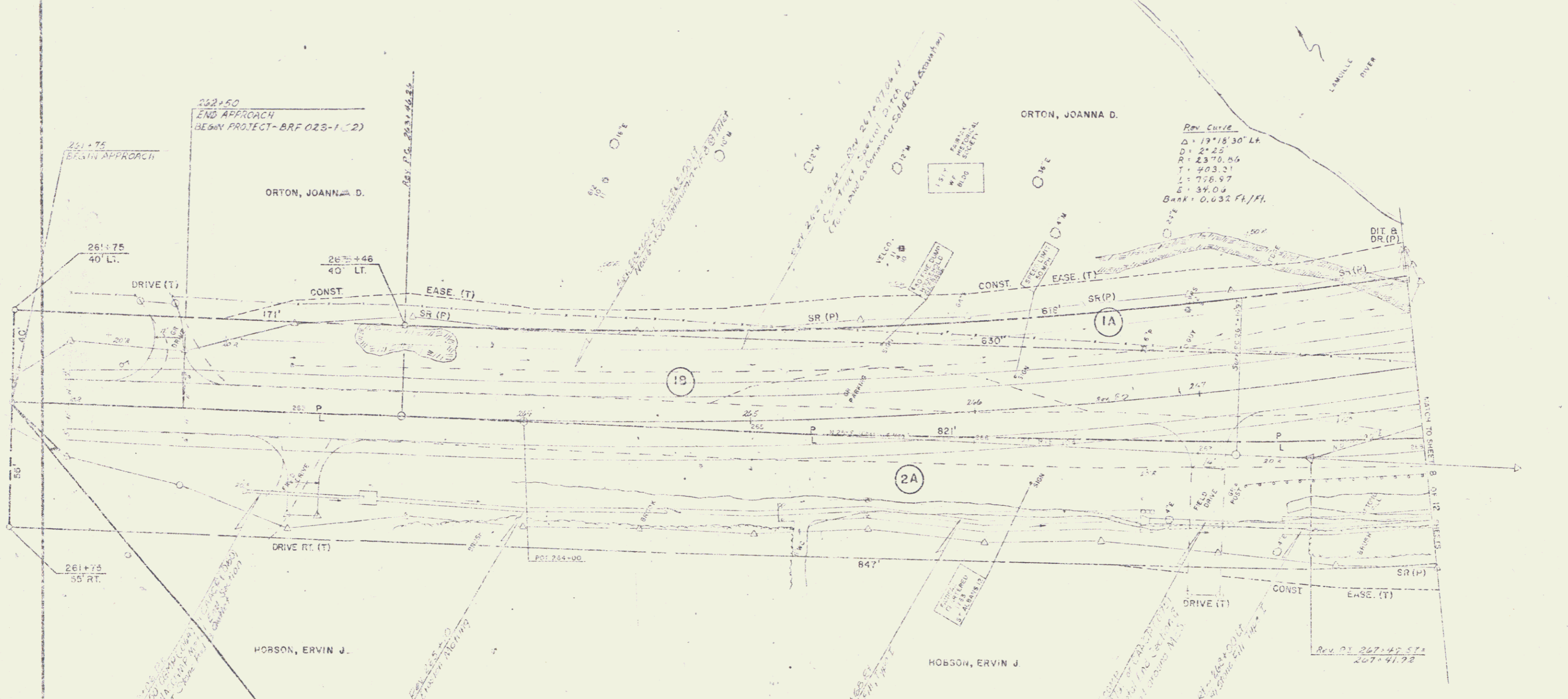
Concrete Drive  
261+75 to 261+85 (Gravel)  
261+85 to 261+95 (Gravel)  
Rev. 261+00 to 261+00

WIREWAY CABLE TERMINAL FOR GUY D  
FAC. STEEL W/POSTS, TYPE III  
Rev. 261+12 LT. - Rev. 261+31 LT.

GUARD RAIL 143 STEEL BEAM W/  
WOOD POSTS, TYPE III  
Rev. 261+37 LT. - 261+00 LT.

REVISIONS TO PLAN OF EXISTING DRIVE  
Rev. 261+15 LT. - Rev. 261+00 LT.

CHILING & BLASTING Y-SOLD ROCK SUBGRADE  
Surv. 261+00 - Rev. 261+00

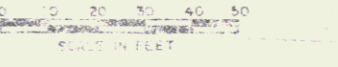


DATE	NOV 1986
SCALE	AS SHOWN
HORIZONTAL	1" = 40'

BEGIN R.O.W. PROJECT  
BRF 023-1(2) 261+75 CL

OCT 3 1986

NOTE:  
SEE PROFILE SHEETS FOR ALIGNMENT TIES



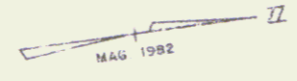
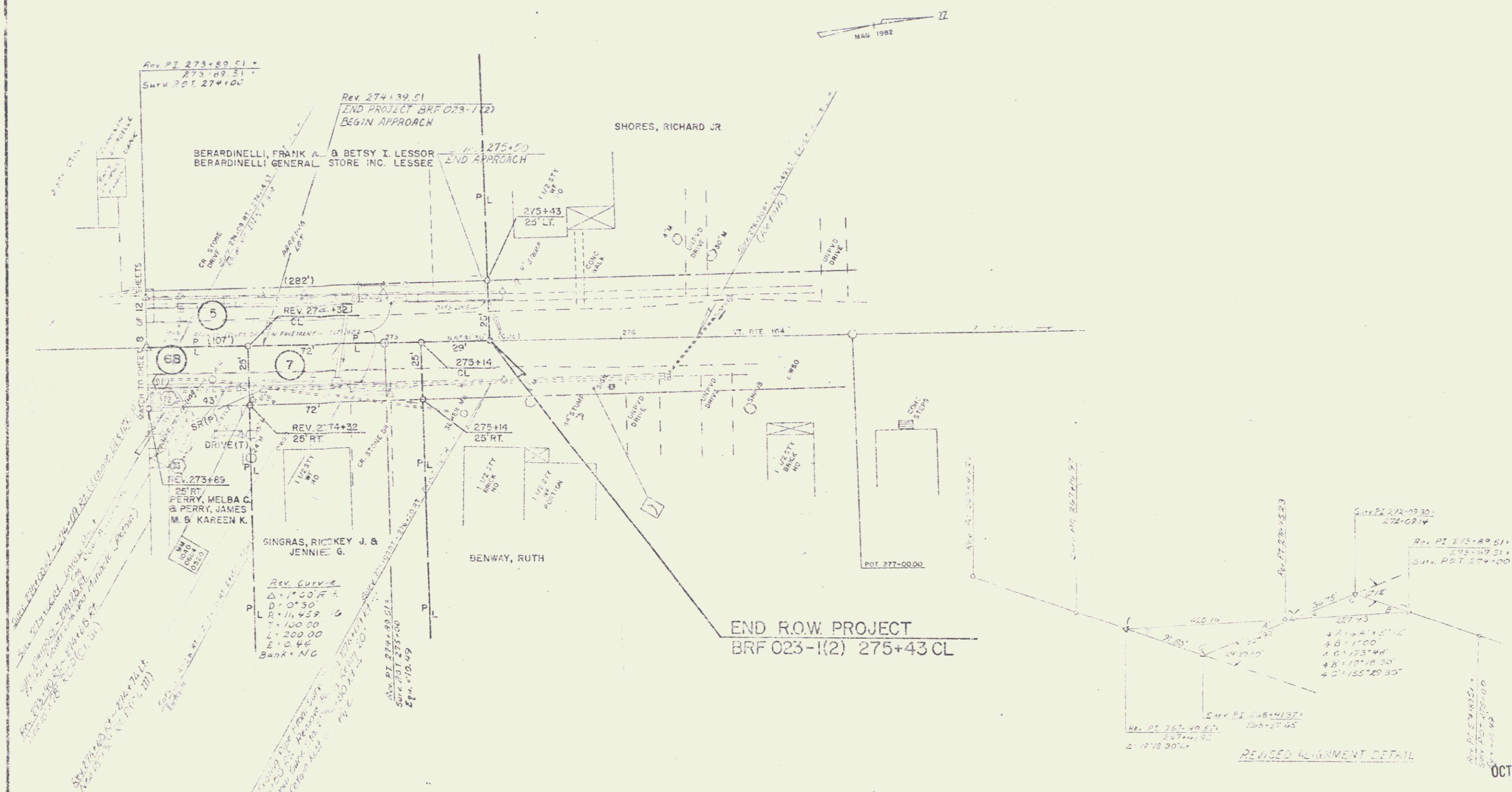
SURVEYED BY	BRIDY	DATE	1986
DRAWN BY	SS	DATE	1986
TRACED BY	SP	DATE	1986
PROJECT NO. BRF 023-1(2)			
SHEET 7 OF 12			



CONSTANT GRADE CONCRETE SHOULDER  
 TO 275+00 LT - 275+00 RT  
 Rev. 275+00 LT (Gravel)  
 Rev. 275+00 RT (Gravel)

CONSTANT GRADE  
 REV. 274+25 RT (Gravel)  
 Rev. 274+18 LT (Gravel)  
 Rev. 274+05 LT (Gravel)  
 Rev. 274+09 LT (Gravel)

ENTRANCING CONCRETE SHOULDER (4")  
 Rev. 275+90 LT - 275+30 LT



DATUM  
 VERTICAL: NAD 83  
 HORIZONTAL: N/A

NOTE  
 SEE PROFILE SHEETS FOR ALIGNMENT TIES  
 SCALE IN FEET  
 0 10 20 30 40 50

SURVEYED BY: BERRY DATE: 1-82  
 DRAWN BY: SK JAWORSKI DATE: 1-82  
 TRACED BY: SK JAWORSKI DATE: 5-82  
 FORTRAN  
 PROJ. BRT NO. 023-1(2)  
 SHEET 9 OF 12

OCT 3 1986

4