

INDEX OF SHEETS

# STATE OF VERMONT AGENCY OF TRANSPORTATION

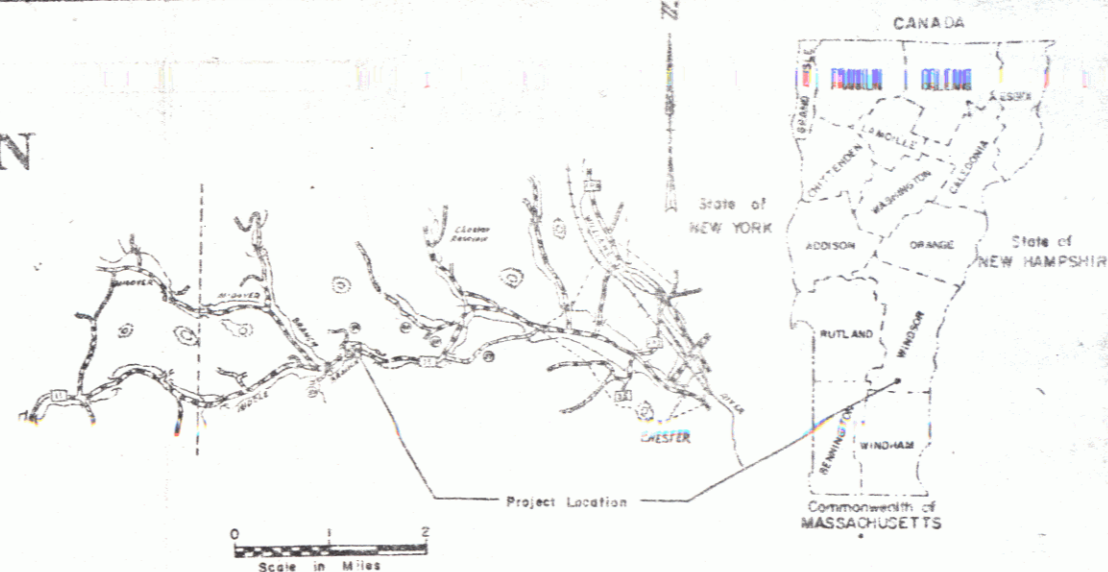


## PROPOSED IMPROVEMENT BRIDGE PROJECT

TOWN OF CHESTER  
COUNTY OF WINDSOR

ROUTE NO.: VT. RT. 111 BRIDGE NO. 45

BEGINNING AT A POINT APPROXIMATELY 1.874 MILES  
EASTERLY OF THE ANDOVER - CHESTER TOWN  
LINE AND EXTENDING WESTERLY 0.180 MILES



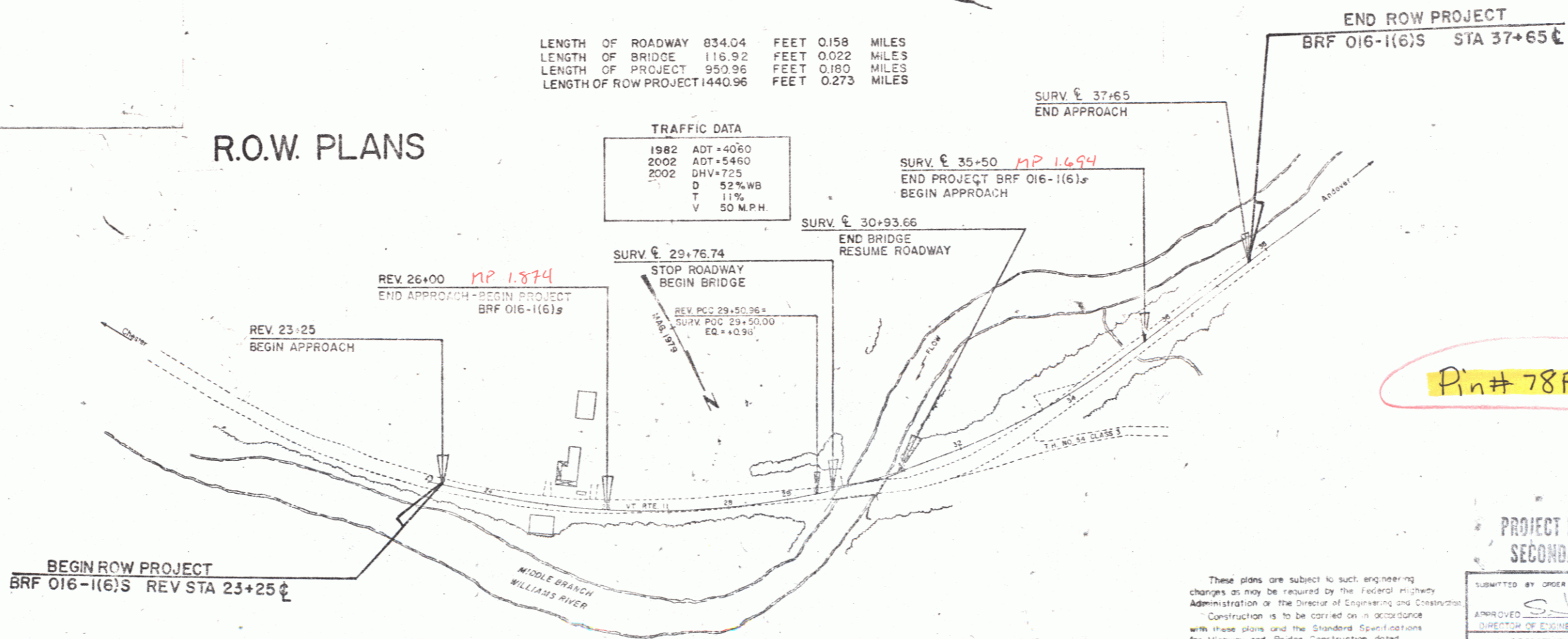
PROJECT DESCRIPTION  
WORK TO BE PERFORMED UNDER THIS PROJECT  
INCLUDES CONSTRUCTION OF A NEW BRIDGE AND  
APPROACHES ON IMPROVED ALIGNMENT. APPROACH  
WORK CONSISTS OF GRADING, DRAINAGE, SUBBASE,  
PAVEMENT AND GUARD RAIL.

LENGTH OF ROADWAY	834.04	FEET	0.158	MILES
LENGTH OF BRIDGE	116.92	FEET	0.022	MILES
LENGTH OF PROJECT	950.96	FEET	0.180	MILES
LENGTH OF ROW PROJECT	1440.96	FEET	0.273	MILES

### R.O.W. PLANS

#### TRAFFIC DATA

1982	ADT	4060
2002	ADT	5460
2002	DHV	725
D		52%WB
T		11%
V		50 M.P.H.



Pin# 78F164

- CONVENTIONAL SIGNS
- COUNTY LINE
  - TOWN LINE
  - LIMITS OF ACCESS
  - POINT OF ACCESS
  - FENCE LINE
  - STONE WALL
  - TRAVELED WAY
  - GUARD RAIL
  - RAILROAD
  - SURVEY LINE
  - CULVERT
  - POWER POLE
  - TELEPHONE POLE
  - ROL OF ACCESS
  - PROPERTY LINE
  - ROW TAKING LINE
  - SLOPE RIGHTS
  - TOP OF CUT
  - TOE OF SLOPE

DATUM  
VERTICAL: NGVD 1929  
HORIZONTAL: N/A

These plans are subject to such engineering changes as may be required by the Federal Highway Administration or the Director of Engineering and Construction. Construction is to be carried on in accordance with these plans and the Standard Specifications for Highway and Bridge Construction dated March, 1975, as approved by the Federal Highway Administration on October 27, 1975, for use on this project, including all subsequent revisions and such revised specifications and special provisions as are incorporated in these plans.

#### PROJECT PROCESSED UNDER SECONDARY ROAD PLAN

SUBMITTED BY ORDER OF THE STATE TRANSPORTATION BOARD  
APPROVED: S.J. Pe...  
DIRECTOR OF ENGINEERING AND CONSTRUCTION  
DEPARTMENT OF TRANSPORTATION  
FEDERAL HIGHWAY ADMINISTRATION

APPROVED: CHIEF, PROPERTY ADMINISTRATION  
DATE: 12-7-81

PROJECT: BRF 016-1(6)S  
SHEET: 1 OF 6 SHEETS

GUARD RAIL STANDARD STEEL BEAM WITH WOOD POSTS TYPE II

26+52 ~ 28+64 RT  
28+44 ~ 29+44 LT  
31+15 ~ 31+93 RT  
32+12 ~ 32+25 LT  
34+00 ~ 35+71 RT  
34+00 ~ 37+00 LT

TREATED TIMBER CURB

28+53 ~ 29+97 LT  
31+62 ~ 33+25 LT  
34+00 ~ 36+00 LT

CONSTRUCT DRIVES

24+40 ~ 24+60 RT  
24+75 LT  
25+75 LT  
32+50 RT  
33+62 LT

EROSION MATTING

26+00 ~ 27+50 LT

BIT CONC SURF FOR

GUTTERS & TRAFFIC ISLANDS  
28+50 LT (Gutter)

GUARD RAIL HEAVY DUTY STEEL BEAM WITH WOOD POSTS TYPE II

25+64 ~ 27+11 RT  
27+44 ~ 27+97 LT  
30+70 ~ 31+13 RT  
31+62 ~ 32+12 LT

REMOVAL & DISPOSAL OF EXISTING GUARD RAIL

28+55 ~ 29+70 RT  
29+45 ~ 29+75 LT  
30+70 ~ 31+20 LT  
30+45 ~ 30+75 RT

BREAKAWAY CABLE TERMINAL FOR GUARD RAIL STANDARD STEEL BEAM WITH WOOD POSTS TYPE II

26+27 ~ 26+52 RT  
28+17 ~ 28+44 LT  
31+75 ~ 32+18 RT  
37+00 ~ 37+25 LT  
33+75 ~ 34+00 RT  
33+25 ~ 33+50  
33+75 ~ 34+00

SURVEY A CURVE  
 $\Delta = 98^\circ 43' 45''$  LT  
 $D = 4^\circ 15' 00''$   
 $R = 1348.14$   
 $T = 870.37$   
 $L = 1540.87$   
 $E = 256.87$

REMOVAL OF EXISTING BITUMINOUS CONCRETE PALEMENT (COMMON EXCAV)

28+50 ~ 29+80 E  
30+65 ~ 33+00 RT

CONSTRUCT APPROACH

33+00 RT (TH. 54)

STONE FILL TYPE II

Chan. 15+34.5 ~ 15+83

STONE FILL TYPE III

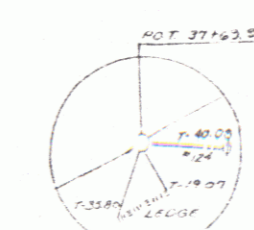
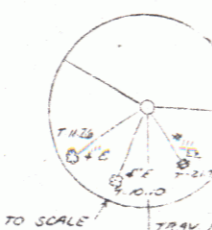
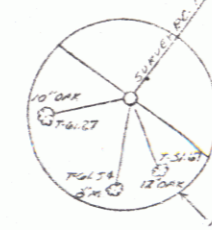
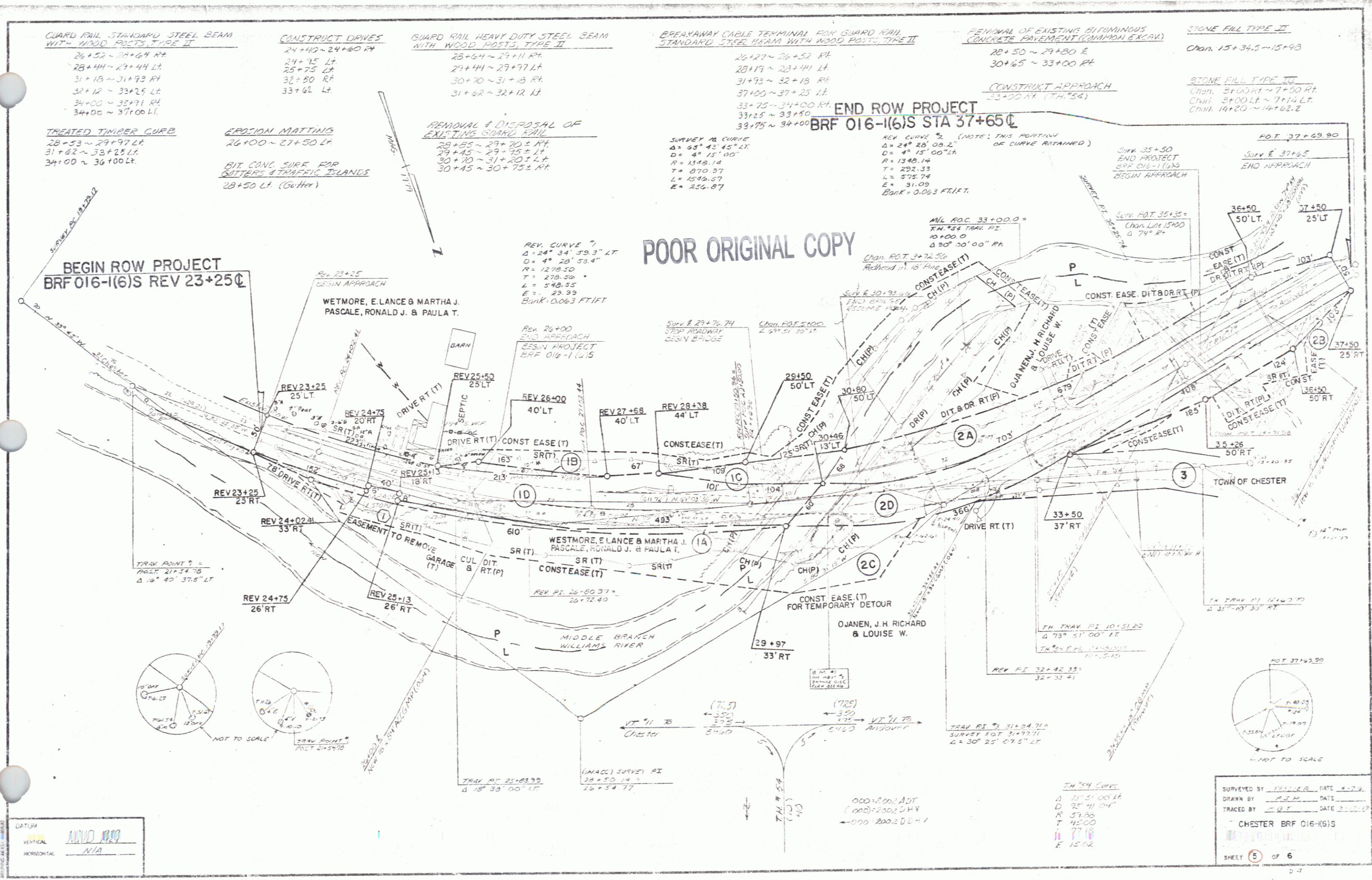
Chan. 37+00 RT ~ 7+50 RT  
Chan. 27+00 LT ~ 7+14 LT  
Chan. 14+20 ~ 14+62.2

END ROW PROJECT

BRF 016-1(6)S STA 37+65

POOR ORIGINAL COPY

BEGIN ROW PROJECT  
BRF 016-1(6)S REV 23+25



DATUM  
VERTICAL: **NAVD 88**  
HORIZONTAL: **N/A**

SURVEYED BY: [Signature] DATE: 4-79  
DRAWN BY: [Signature] DATE: 4-79  
TRACED BY: [Signature] DATE: 2-11-17  
CHESTER BRF 016-1(6)S  
SHEET 5 OF 6