

GUARD RAIL STANDARD STEEL BEAM WITH WOOD POSTS TYPE II

26+52 ~ 28+64 RT
28+44 ~ 29+44 LT
31+15 ~ 31+93 RT
32+12 ~ 33+25 LT
34+00 ~ 35+71 RT
34+00 ~ 37+00 LT

TREATED TIMBER CURB

28+53 ~ 29+97 LT
31+62 ~ 33+25 LT
34+00 ~ 36+00 LT

CONSTRUCT DRIVES

24+40 ~ 24+60 RT
24+75 LT
25+75 LT
32+50 RT
33+62 LT

EROSION MATTING

26+00 ~ 27+50 LT

BIT CONC SURF FOR

GUTTERS & TRAFFIC ISLANDS
28+50 LT (Gutter)

GUARD RAIL HEAVY DUTY STEEL BEAM WITH WOOD POSTS TYPE II

25+64 ~ 27+11 RT
27+44 ~ 29+97 LT
30+70 ~ 31+13 RT
31+62 ~ 32+12 LT

REMOVAL & DISPOSAL OF EXISTING GUARD RAIL

28+55 ~ 29+70 RT
29+45 ~ 29+75 LT
30+70 ~ 31+20 LT
30+45 ~ 30+75 RT

BREAKAWAY CABLE TERMINAL FOR GUARD RAIL STANDARD STEEL BEAM WITH WOOD POSTS TYPE II

26+27 ~ 26+52 RT
28+17 ~ 28+44 LT
31+75 ~ 32+13 RT
37+00 ~ 37+25 LT
33+75 ~ 34+00 RT
33+25 ~ 33+50
33+75 ~ 34+00

SURVEY A CURVE
 $\Delta = 98^\circ 43' 45''$ LT
 $D = 4^\circ 15' 00''$
 $R = 1348.14$
 $T = 870.37$
 $L = 1540.87$
 $E = 256.87$

REMOVAL OF EXISTING BITUMINOUS CONCRETE PALEMENT (COMMON EXCAV)

28+50 ~ 29+80 E
30+65 ~ 33+00 RT

CONSTRUCT APPROACH

33+00 RT (TH. 54)

STONE FILL TYPE II

Chan. 15+34.5 ~ 15+83

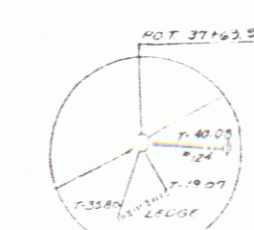
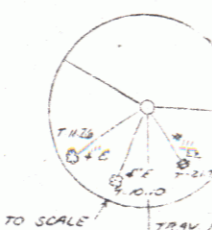
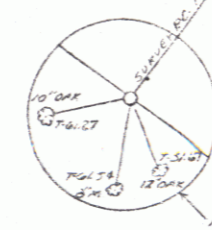
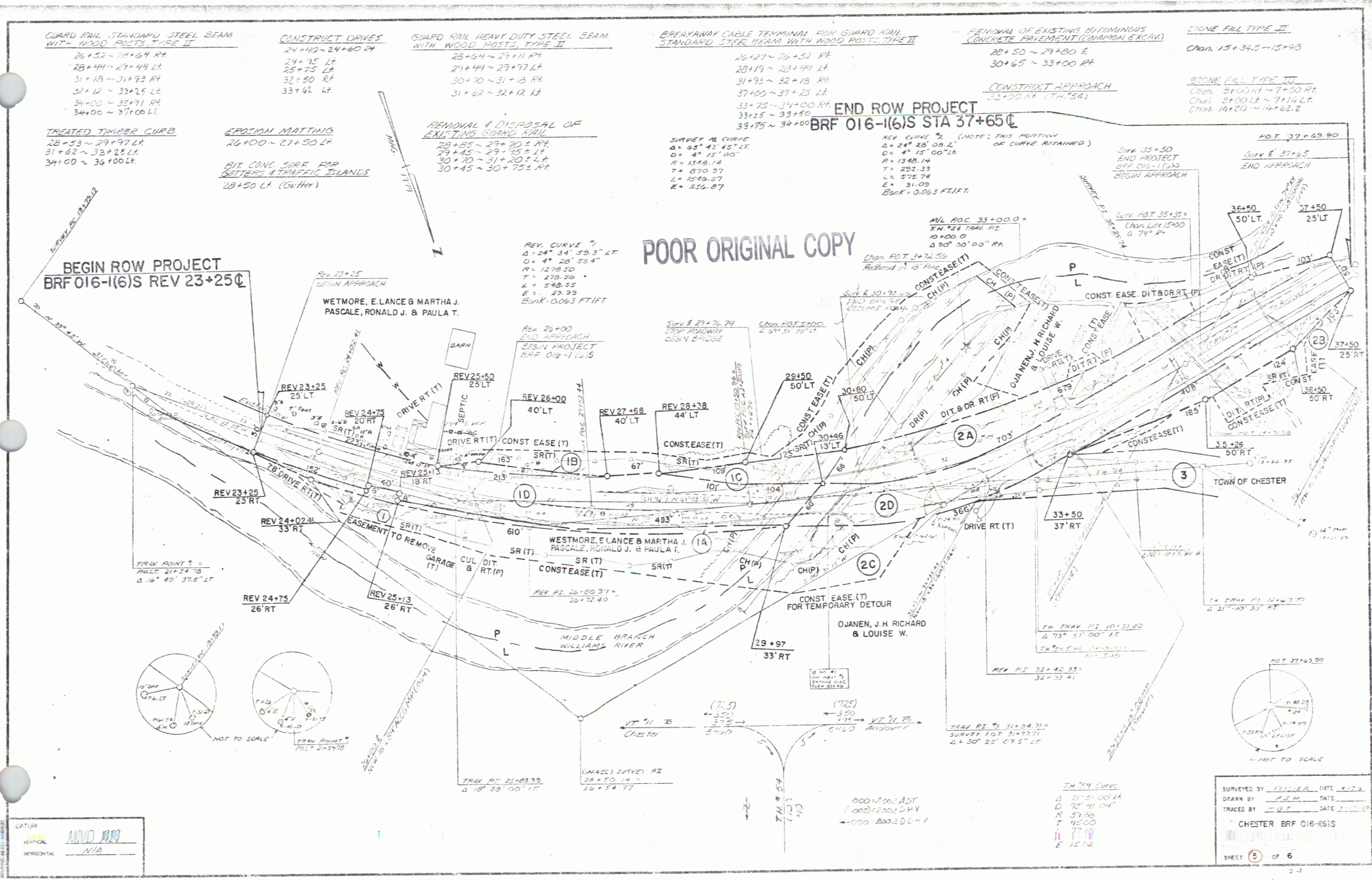
STONE FILL TYPE III

Chan. 37+00 RT ~ 7+50 RT
Chan. 27+00 LT ~ 7+14 LT
Chan. 14+20 ~ 14+62.2

END ROW PROJECT
BRF 016-1(6)S STA 37+65

POOR ORIGINAL COPY

BEGIN ROW PROJECT
BRF 016-1(6)S REV 23+25



DATUM
VERTICAL: **NAVD 88**
HORIZONTAL: **N/A**

SURVEYED BY: [Signature] DATE: 4-79
DRAWN BY: [Signature] DATE: 4-79
TRACED BY: [Signature] DATE: 2-11-17
CHESTER BRF 016-1(6)S
SHEET 5 OF 6