

POOR ORIGINAL COPY

INDEX OF SHEETS

1	TITLE
2	GENERAL
3	DRAINAGE AND QUANTITY SHEET
4	EARTHWORK SHEET
5	PLAN AND PROFILE SHEET
6-10	BRIDGE 100 SERIES
11-20	BRIDGE 200 SERIES
21-25	CROSSCTIONS MAIN LINE
26-30	CROSSCTIONS CHANNEL

STATE OF VERMONT
AGENCY OF TRANSPORTATION



PROPOSED IMPROVEMENT
TOWN OF ARLINGTON
COUNTY OF BENNINGTON
VT RTE 313 (EAS)

IN THE TOWN OF ARLINGTON, BEGINNING AT A POINT ON VT 313 WHICH IS 0.960 MILES WESTERLY OF THE JUNCTION OF VT 313 AND US 7 AND EXTENDING EASTERLY FOR 0.107 MILES

LENGTH OF ROADWAY 400.82 FEET 0.76 MILES
LENGTH OF BRIDGES 162.24 FEET 0.31 MILES
LENGTH OF PROJECT 563.06 FEET 1.07 MILES
LENGTH OF R.O.W. PROJECT 870.00 FEET 1.65 MILES



R.O.W. PLANS



CONVENTIONAL SIGNS

COUNTY LINE	---
TOWN LINE	---
LIMITS OF ACCESS	---
POINT OF ACCESS	X
FENCE LINE	---
STONE WALL	---
TRAVELED WAY	---
GUARD RAIL	---
RAILROAD	---
SURVEY LINE	---
CULVERT	---
POWER POLE	⊙
TELEPHONE POLE	⊙
TREES	⊙
CONTROL OF ACCESS	---
PROPERTY LINE	---
R.O.W. TAKING LINE	---
SLOPE RIGHTS	---
TOP OF CUT	---
TOP OF SLOPE	---

DATUM
VERTICAL NSVD 1927
HORIZONTAL N/A

SCALE 1"=80'

These plans are subject to such engineering changes as may be required by the Federal Highway Administration or the Director of Engineering and Construction.
Construction is to be carried on in accordance with these plans and the Standard Specifications for Highway and Bridge Construction dated March, 1976, as approved by the Federal Highway Administration on October 27, 1976 for use on this project, including all subsequent revisions and such revised specifications and special provisions as are incorporated in these plans.

Pin # 78E160

JAN 10 1978

APPROVED: [Signature] DATE 11/6-82
CHIEF, PROPERTY ADMINISTRATION

SUBMITTED BY: [Signature] DATE 11/6-82
APPROVED: [Signature] DATE 11/6-82
DIRECTOR OF ENGINEERING AND CONSTRUCTION

DEPARTMENT OF TRANSPORTATION
FEDERAL HIGHWAY ADMINISTRATION

PROJECT: ARLINGTON
BRS 0108(2)

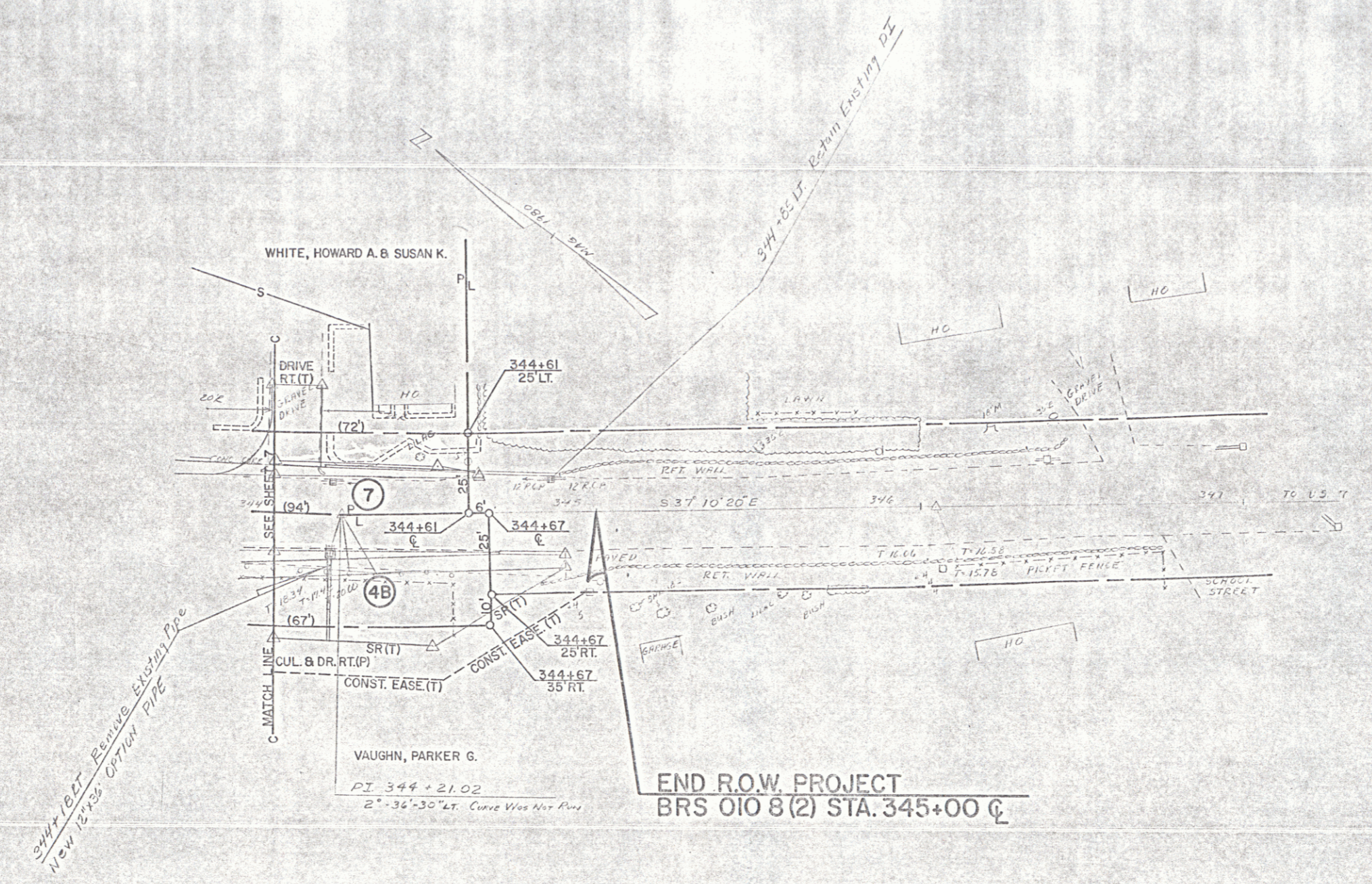
SHEET 1 OF 9 SHEETS

D-10 2/83 12/77 70



POOR ORIGINAL COPY

CONSTRUCT DRIVE LT 344+76	STANDARD STEEL BEAM GUARDRAIL w/ WOOD POST TYPE II LT 344+60 ~ 344+27	5 BITUMINOUS CONCRETE SIDEWALK LT 344+00 ~ 344+96	PRECAST REINFORCED CEMENT CONCRETE CURB TYPE B LT 344+15 ~ 344+64	CHANGE ELEV OF DROP INLET LT 344+00 ~ 344+70	REMOVAL AND DISPOSAL OF EXISTING GUARDRAIL LT 344+00 ~ 344+55
---------------------------------	--------------------------------------------------------------------------------	---------------------------------------------------------	----------------------------------------------------------------------------	----------------------------------------------------	------------------------------------------------------------------------



JAN 09 1990
SCALE 1"=20'

SURVEYED BY	PHANTON	DATE	01-22-90
DRAWN BY	HODGE	DATE	01-21-90
CHECKED BY	HODGE	DATE	01-21-90
ARLINGTON			
PROJ	BRS OIO 8 (2)		
SHEET	8	OF	9

