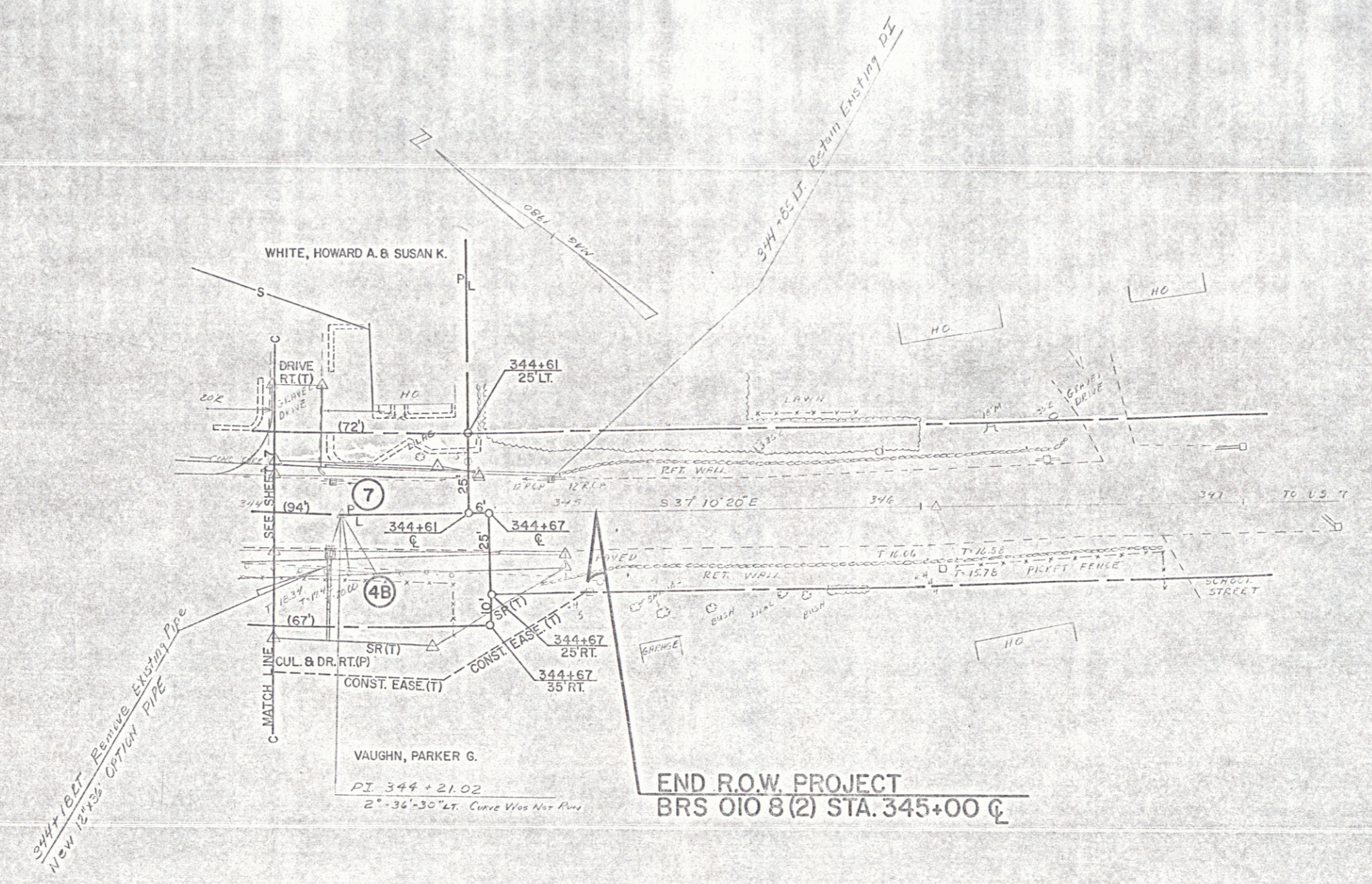


POOR ORIGINAL COPY

| | | | | | |
|---------------------------------|--|---|--|--|--|
| CONSTRUCT DRIVE LT 344+76 | STANDARD STEEL BEAM GUARDRAIL w/ WOOD POST TYPE II LT 344+60 ~ 344+27 | 5 BITUMINOUS CONCRETE SIDEWALK LT 344+00 ~ 344+96 | PRECAST REINFORCED CEMENT CONCRETE CURB TYPE B LT 344+15 ~ 344+64 | CHANGE ELEV OF DROP INLET LT 344+00 ~ 344+70 | REMOVAL AND DISPOSAL OF EXISTING GUARDRAIL LT 344+00 ~ 344+55 |
|---------------------------------|--|---|--|--|--|



JAN 09 1990
SCALE 1"=20'

| | | | |
|-------------|---------------|------|----------|
| SURVEYED BY | PHANTON | DATE | 01-22-90 |
| DRAWN BY | HODGE | DATE | 01-23-90 |
| CHECKED BY | MCDONNELL | DATE | 01-23-90 |
| ARLINGTON | | | |
| PROJ | BRS OIO 8 (2) | | |
| SHEET | 8 | OF | 9 |