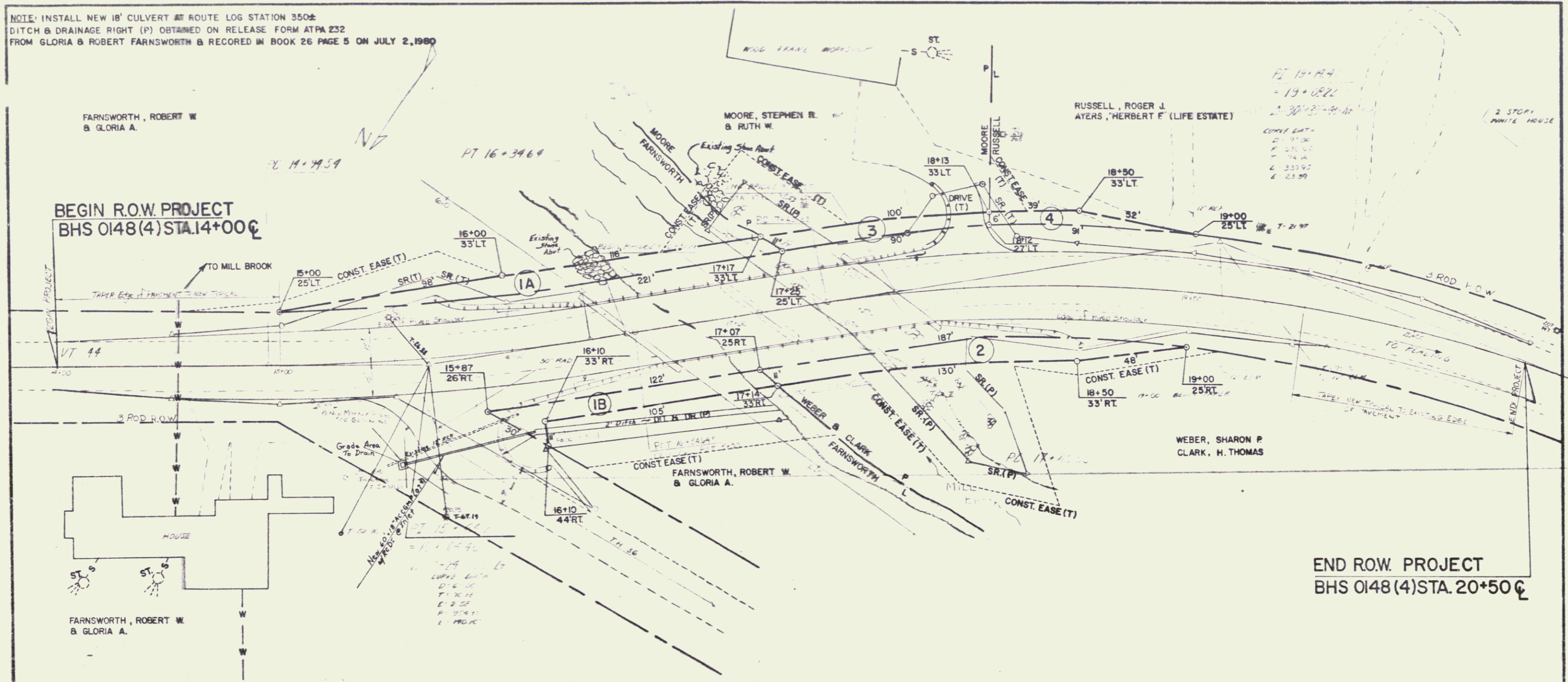


NOTE: INSTALL NEW 18" CULVERT AT ROUTE LOG STATION 350±
 DITCH & DRAINAGE RIGHT (P) OBTAINED ON RELEASE FORM ATPA 232
 FROM GLORIA & ROBERT FARNSWORTH & RECORDED IN BOOK 26 PAGE 5 ON JULY 2, 1980

FARNSWORTH, ROBERT W.
 & GLORIA A.

BEGIN R.O.W. PROJECT
 BHS 0148(4) STA. 14+00.00



FARNSWORTH, ROBERT W.
 & GLORIA A.

END R.O.W. PROJECT
 BHS 0148(4) STA. 20+50.00

HYDRAULIC INFORMATION

Drainage Area 26.0 acm (673x1m)
 $Q_{10} = 2500$ cfs (70.7 cms) HW Elev. 689.4
 $Q_{25} = 3500$ cfs (101.1 cms) HW Elev. 691.3
 $Q_{50} = 4500$ cfs (131.4 cms) HW Elev. 693.0
 $Q_{100} = 5500$ cfs (161.8 cms) HW Elev. 694.6
 Tailwater at $Q_{50} = 691.2$
 Velocity at $Q_{50} = 10.1$ fps (3.1 mps)

POOR ORIGINAL COPY

**STATE OF VERMONT
 AGENCY OF TRANSPORTATION**

TOWN OF <i>WINDSOR</i>	Bridge No. <i>3</i>
HIGHWAY NO. <i>17-22</i>	Log Sta.
	Surv. Sta.
<i>17-22 GRAD MILL FEEL</i>	
PLAN	
Designed by <i>E. H. Z. III</i>	Drawn by <i>E. F. SHART</i>
Checked by	Bridge Design Supervisor
date	date
PROJECT <i>17-22 GRAD MILL FEEL</i>	PROJECT NO. <i>EN. CAS 191</i>
Bridge Sheet No.	Sheet <i>3</i> of <i>4</i>