

INDEX OF SHEETS

STATE OF VERMONT AGENCY OF TRANSPORTATION



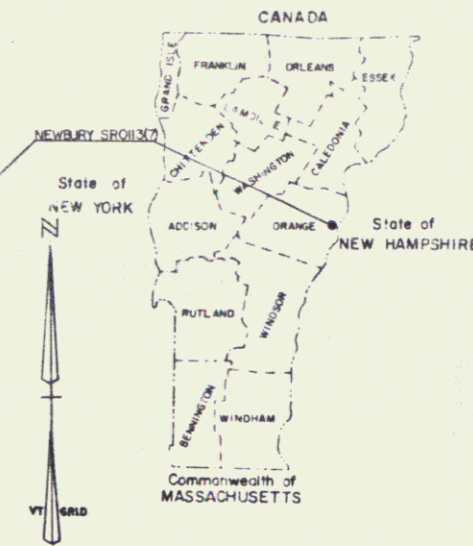
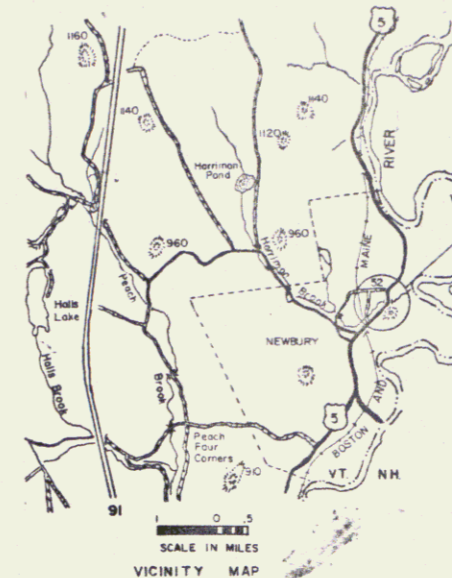
PROPOSED IMPROVEMENT TOWN OF NEWBURY COUNTY OF ORANGE

US RTE-5

FEDERAL-AID SECONDARY HIGHWAY PROJECT
BEGINNING AT A POINT APPROX. 4.2 MILES NORTH
OF THE NEWBURY-BRADFORD TOWN LINE AND EXTENDING
NORTHERLY .112 MILES.

LENGTH OF ROADWAY 590.86 FEET = .112 MILES
LENGTH OF BRIDGE 0.00 FEET = 0.00 MILES
LENGTH OF PROJECT 590.86 FEET = .112 MILES
LENGTH OF R.O.W. PROJECT 1025.25 FEET = 0.194 MILES

1981 AADT = 1550
1991 DHV = 230
1991 AADT = 1870
1991 DHV = 275
G = 5.6% NB
T = 8%
V = 50 MPH



R.O.W. PLANS

BEGIN R.O.W. PROJECT
RS 0113 (7) REV. STA. 222+00 C

REV. 221+99.42
BEGIN APPROACH

REV. 223+98.64 MP 4.226
END APPROACH-BEGIN PROJECT RS 0113(7)

END R.O.W. PROJECT
RS 0113 (7) REV. STA. 232+25.25 C

REV. 232+25.25
END APPROACH

BEGIN MAINT. AGREE. AREA NO. 1
REV. 225+93 12' RT.

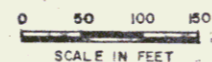
END MAINT. AGREE AREA NO. 1
REV. 225+89 44' RT.

REV. 229+89.50
END PROJECT RS 0113(7)-BEGIN APPROACH
MP 4.338

PREVIOUSLY AN "SR" PROJECT

- CONVENTIONAL SIGNS
- COUNTY LINE
 - TOWN LINE
 - LIMITS OF ACCESS
 - POINT OF ACCESS
 - FENCE LINE
 - STONE WALL
 - TRAVELED WAY
 - GUARD RAIL
 - RAILROAD
 - SURVEY LINE
 - CULVERT
 - POWER POLE
 - TELEPHONE POLE
 - TREES
 - CONTROL OF ACCESS
 - PROPERTY LINE
 - RIGHT OF WAY LINE
 - SR RIGHTS
 - TOP OF CUT
 - TOE OF SLOPE

DATUM
VERTICAL NGVD 1929
HORIZONTAL N/A



RIGHT-OF-WAY DIVISION
TOWN FILE
PERPETUAL

Pin # 78E152

PROJECT PROCESSED UNDER
SECONDARY ROAD PLAN

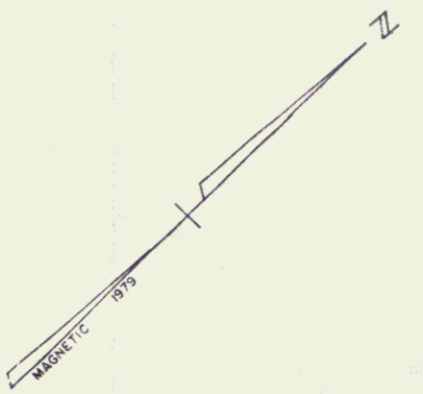
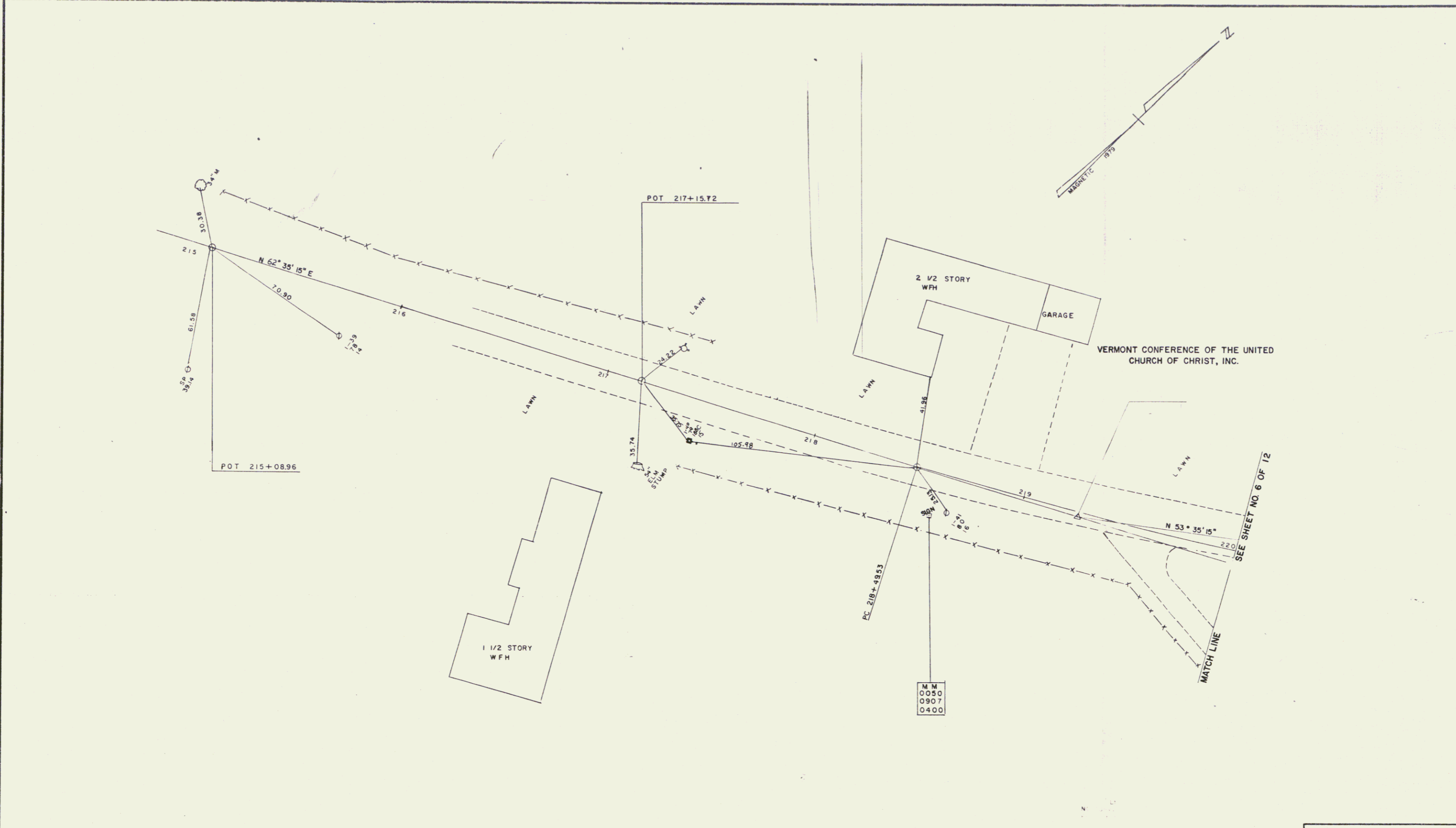
Town of _____
These plans are subject to such engineering changes as may be required by the Federal Highway Administration or the Director of Engineering and Construction. Construction is to be carried out in accordance with these plans and the Standard Specifications for Highway and Bridge Construction dated March, 1976, as approved by the Federal Highway Administration on October 27, 1976, for use on this project, including all subsequent revisions and such revised specifications and special provisions as are incorporated in these plans.

SUBMITTED BY ORDER OF THE STATE TRANSPORTATION BOARD
APPROVED: *[Signature]* DATE 3-9-81
DIRECTOR OF ENGINEERING AND CONSTRUCTION

DEPARTMENT OF TRANSPORTATION
FEDERAL HIGHWAY ADMINISTRATION

APPROVED: _____ DATE 3-9-81
CHIEF, PROPERTY ADMINISTRATION

PROJECT RS 0113(7)
SHEET 12 OF 12
SRS 12/17/76



DATUM
 VERTICAL NGVD 1929
 HORIZONTAL N/A

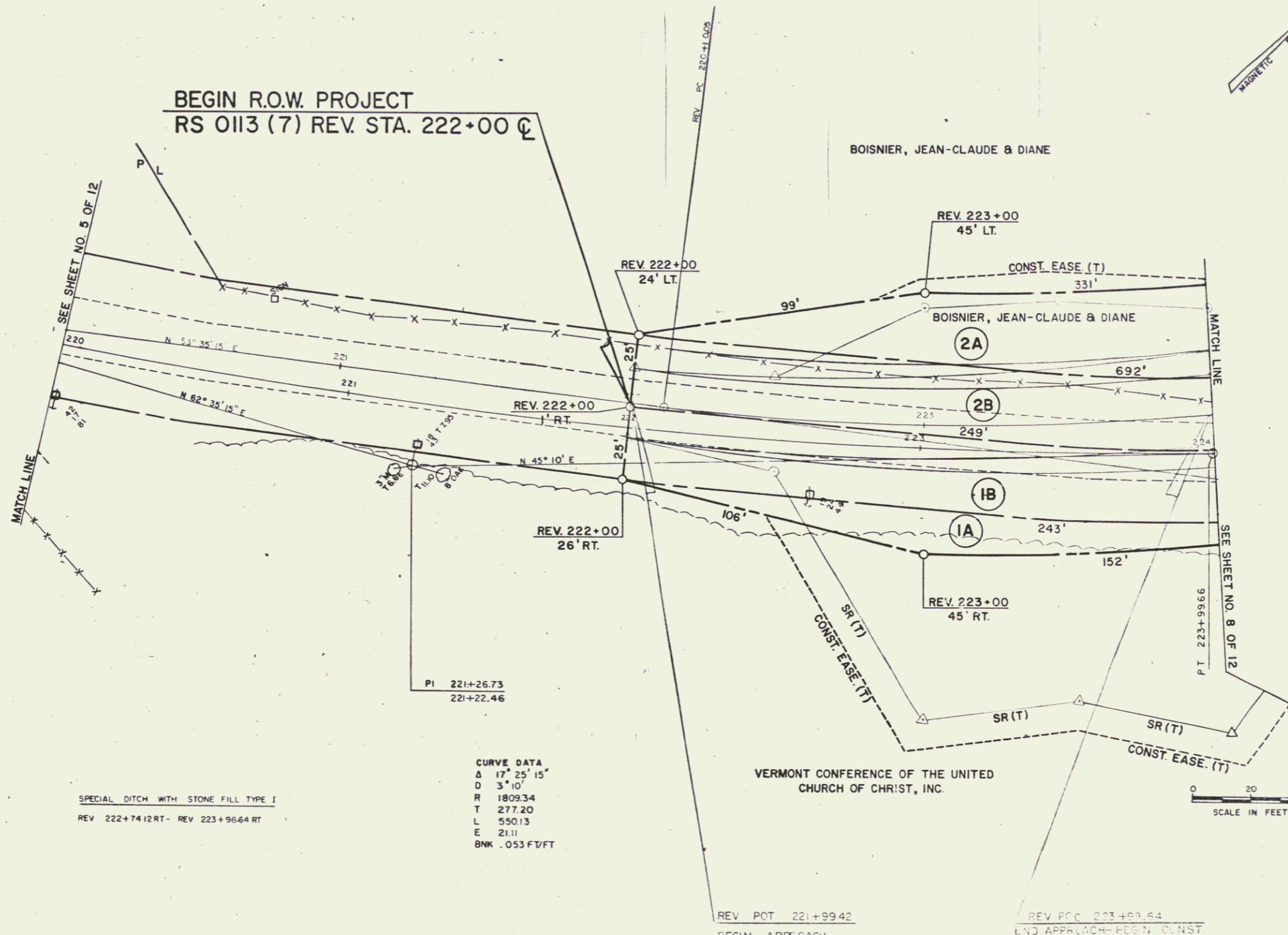
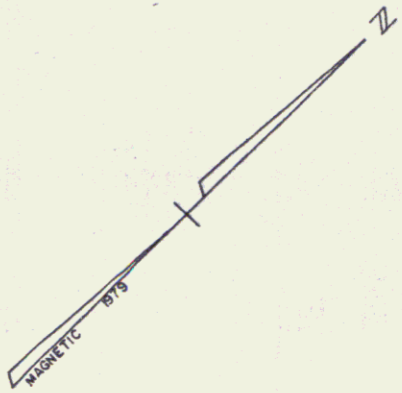
0 20 40
 SCALE IN FEET

SURVEYED BY TESSIER DATE 11-80
 DRAWN BY ST. PETER DATE 11-80
 TRACED BY TOOLAN DATE 11-80
 NEWBURY
 PRGJ. RS NO 0113.7
 SHEET 5 OF 12

D-7

2

BEGIN R.O.W. PROJECT
RS 0113 (7) REV. STA. 222+00



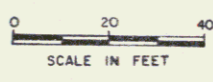
PI 221+26.73
221+22.46

CURVE DATA
A 17° 25' 15"
D 3' 10"
R 1809.34
T 277.20
L 550.13
E 21.1
BNK .053 FV/FT

SPECIAL DITCH WITH STONE FILL TYPE I
REV 222+74.12 RT - REV 223+96.64 RT

REV POT 221+99.42
BEGIN APPROACH

REV POC 223+99.64
END APPROACH-BEGIN CONST.



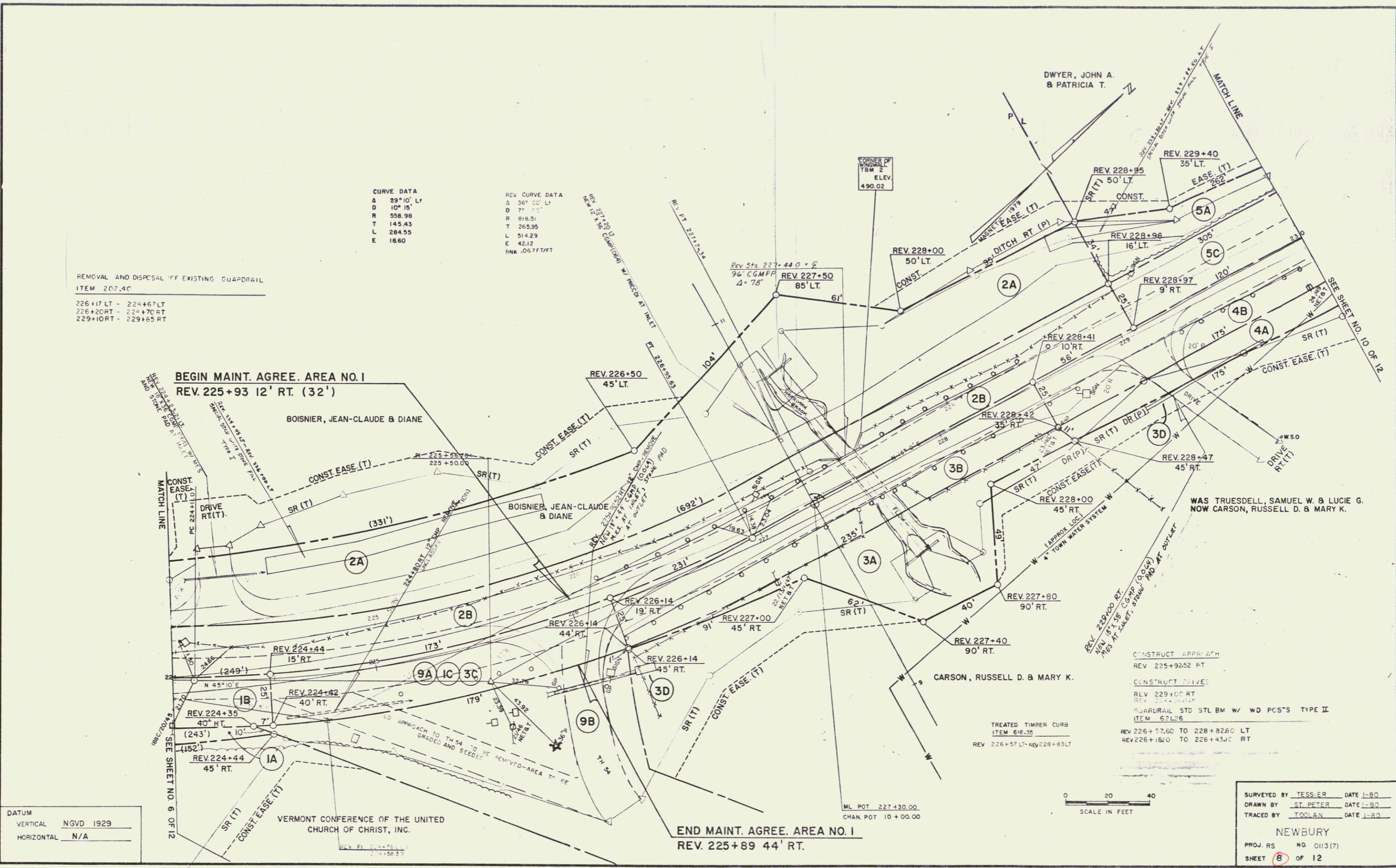
DATUM
VERTICAL NGVD 1929
HORIZONTAL N/A

SURVEYED BY LESSLER DATE 1-80
DRAWN BY ST. PETER DATE 1-80
TRACED BY IGGLAN DATE 1-80
NEWBURY
PROJ. R S NO. 0113 (7)
SHEET 6 OF 12

REMOVAL AND DISPOSAL OF EXISTING GUARDRAIL
 ITEM 207.40
 226+17 LT - 228+67 LT
 226+20 RT - 228+70 RT
 229+10 RT - 229+55 RT

CURVE DATA		REV CURVE DATA	
Δ	29°10' LT	Δ	36°00' LT
D	10' 15"	D	7' 10"
R	558.98	R	918.51
T	145.43	T	265.95
L	284.55	L	514.29
E	18.60	E	42.12
		BNK	.05 FT/FT

DATUM
 VERTICAL NGVD 1929
 HORIZONTAL N/A

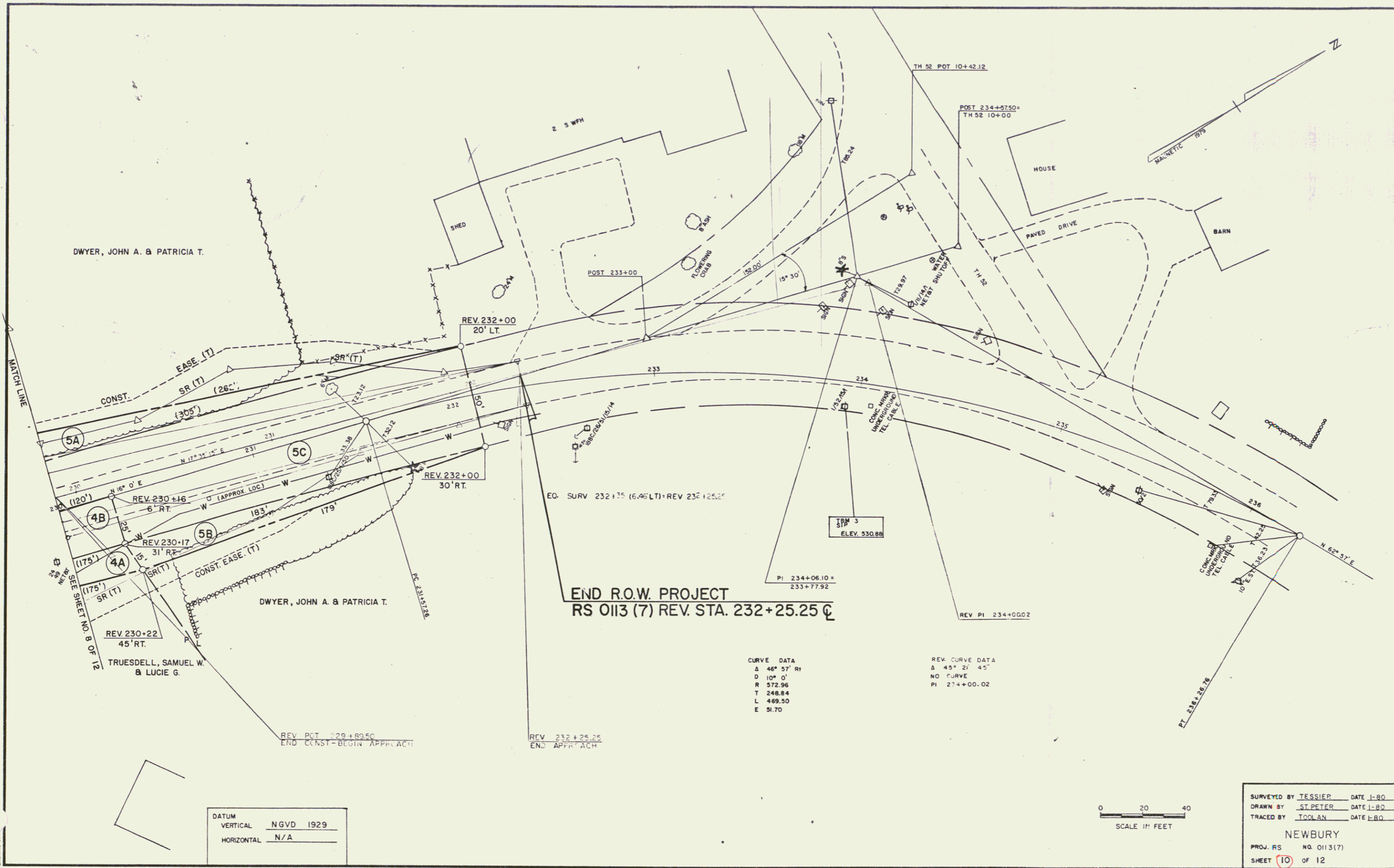


CONSTRUCT APPROACH
 REV 225+92.52 FT
 CONSTRUCT DRIVE
 REV 229+00 RT
 REV 224+00 RT
 GUARDRAIL STD STL BM W/ WD PC'S TYPE II
 ITEM 671.6
 REV 226+57.60 TO 228+82.60 LT
 REV 226+18.00 TO 228+43.00 RT

TREATED TIMBER CURB
 ITEM 616.35
 REV 226+57 LT-REV 228+83 LT

SURVEYED BY TESSIER DATE 1-80
 DRAWN BY ST. PETER DATE 1-80
 TRACED BY TOOLAN DATE 1-80
 NEWBURY
 PROJ. RS NO. 0113(7)
 SHEET 8 OF 12

4



5